

U.S. PUBLIC LAND SURVEY MONUMENT RECORD

For Public Land Survey Corners in:

WI ADMINISTRATIVE CODE A-E 7.08 REQUIREMENT

T. 1 N., R. 12 E 4th P.M.

BELOIT TWP TWP ROCK COUNTY, WI

CORNER CODE INDEX

| | | | | | | | | | | | | | | | | | | | | | | | | | |
|---|----|----|----|----|----|----|---|---|---|----|----|----|----|----|----|----|----|----|----|----|----|----|----|----|----|
| A | 1 | 2 | 3 | 4 | 5 | 6 | 7 | 8 | 9 | 10 | 11 | 12 | 13 | 14 | 15 | 16 | 17 | 18 | 19 | 20 | 21 | 22 | 23 | 24 | 25 |
| B | 6 | 5 | 4 | 3 | 2 | 1 | | | | | | | | | | | | | | | | | | | |
| C | | | | | | | | | | | | | | | | | | | | | | | | | |
| D | | | | | | | | | | | | | | | | | | | | | | | | | |
| E | | | | | | | | | | | | | | | | | | | | | | | | | |
| F | | | | | | | | | | | | | | | | | | | | | | | | | |
| G | 7 | 8 | 9 | 10 | 11 | 12 | | | | | | | | | | | | | | | | | | | |
| H | | | | | | | | | | | | | | | | | | | | | | | | | |
| J | | | | | | | | | | | | | | | | | | | | | | | | | |
| K | 18 | 17 | 16 | 15 | 14 | 13 | | | | | | | | | | | | | | | | | | | |
| L | | | | | | | | | | | | | | | | | | | | | | | | | |
| M | | | | | | | | | | | | | | | | | | | | | | | | | |
| N | | | | | | | | | | | | | | | | | | | | | | | | | |
| O | 19 | 20 | 21 | 22 | 23 | 24 | | | | | | | | | | | | | | | | | | | |
| P | | | | | | | | | | | | | | | | | | | | | | | | | |
| Q | | | | | | | | | | | | | | | | | | | | | | | | | |
| R | | | | | | | | | | | | | | | | | | | | | | | | | |
| S | | | | | | | | | | | | | | | | | | | | | | | | | |
| T | 30 | 29 | 28 | 27 | 26 | 25 | | | | | | | | | | | | | | | | | | | |
| U | | | | | | | | | | | | | | | | | | | | | | | | | |
| V | | | | | | | | | | | | | | | | | | | | | | | | | |
| W | | | | | | | | | | | | | | | | | | | | | | | | | |
| X | | | | | | | | | | | | | | | | | | | | | | | | | |
| Y | 31 | 32 | 33 | 34 | 35 | 36 | | | | | | | | | | | | | | | | | | | |
| Z | | | | | | | | | | | | | | | | | | | | | | | | | |

IF AVAILABLE
ROCK COUNTY COORDINATES PREFERRED

North 217,117.02 Elev. _____

East 475,022.73

Hor. Datum COUNTY Vert. Datum _____

LATITUDE _____ ELLIPS. HT. _____

LONGITUDE _____

ELLIPS. DATUM
NAD83(91) _____ COUNTY _____ LIST _____

GPS (X) _____ TRAVERSE (X) _____

BASED ON THE FOLLOWING CONTROL:

PLACE MONUMENT SYMBOL  AT PROPER LOCATION ON ABOVE INDEX

 CORNER MONUMENT

WITNESS MONUMENT

(a) BEARINGS ARE BASED ON: _____

FIELD BOOK _____ PAGE # _____

SHEET 1 OF 3

SHOW A PLAN VIEW DRAWING DEPICTING THE CORNER MONUMENT AND SURROUNDING PHYSICAL FEATURES, INCLUDING THE EXCAVATION AREA AND DEPTH.

PLANNING & ZONING COMMITTEE ADOPTED THE ABOVE FORM ON 12/2/1982

CORNER CODE N-9

BE565

(B) Describe any record evidence, monument evidence, occupational evidence, testimonial evidence or any other material evidence you considered, and whether the monument was found or placed.

1834 HARRISON NORTH BETWEEN SECS 20 & 21
343.2 BURR OAK 18
1320 LEFT TIMBER & ENTER PRAIRIE
1980 ENTER CREEK BOTTOM.
2640 QUARTER SEC COR. SET POST & RAISED MOUND
3168 BROOK 5.28' CRS S.W.
3300 LEFT BOTTOM BEARING S.W.
5280 COR TO SECS 16,17,20,21 ON GROUND DESCENDING E. SET
POST & RAISED MOUND.
NORTH BET SECS 16 & 17
1274.46 TRAIL TO TURTLE VILLAGE
2640 QUARTER SEC COR IN A RAVEN RUNNING E. SET POST & RAISED
MOUND
5280 COR TO SECS 8, 9,16,17 NEAR HEAD OF DRAUGHT LEADING S.
SET POST & RAISED MOUND.
EAST ON RAND BET. SECS 16 & 21
660 ENTER BOTTOM
1254 BROOK CRS S (NEAR THE HEAD)
1782 TO A TRAIL LEADING TO TURTLE VILLAGE
2112 LEFT BOTTOM CRS S.W.
2640 TEMPY 1/4 SEC COR
5258.88 INT. E BOUNDARY 66' SOUTH OF POST
COR WEST
2629.44 QUARTER SEC COR SET POST & RAISED MOUND ON GROUND
DESCENDING S.W.
5258.88 SEC COR.
EAST ON RAND BET 17 & 20
2640 TEMPY 1/4 SEC COR
5288.58 INT. E BOUNDARY 35.64' NORTH OF POST.
COR. WEST BET 17 & 20
2644.29 QUARTER SEC COR. IN SUMMIT OF RIDGE N & S. POST &
RAISED MOUND
5288.58 SEC COR.
1856 TOWN ROAD RECORDS BK 1 PG 287 DESCRIPTION BEGINS AT CORNER.
1952 BATTERMAN SUBDIVISION PLAT BK 16 PG 4A FOUND IRON PIN
1955 BATTERMAN SUBDIVISION PLAT BK 17 PG 9 FOUND IRON PIN
1957 BATTERMAN SUBDIVISION PLAT BK 19 PG 6 FOUND PIN 2657.89 TO N 1/4
COR SEC 20
1963 BATTERMAN VOL 4 PG 183 REFERENCED COR. TIES ARE REFERENCED TO
TRUE NORTH.
1963 CTH "Q" PROJECT 51429(1) SHEET 4.1 FOUND 3/4" PIN IN MONUMENT BOX.
1970 LEE CSM V 1 PG 302 SET CONCRETE MONUMENT(?)
1971 LEE CSM V2 PG 109 FOUND MONUMENT BUT STATES NOTHING ABOUT IT.
1983 STH 213 PROJECT #5571-01-21 SHEET 4.5 FOUND IRON PIN N/S
198,218.46;E/W 2,245,109.04

FOUND 1" PIPE IN MONUMENT BOX.

C) Was the corner restored through acceptance of (1) an obliterated evidence location, or, (2) a found perpetuated location?
ACCEPTED FOUND MONUMENT.

D) Describe any material discrepancy between the location of the corner as restored or reestablished and the location of that corner as previously restored or reestablished by distance and direction. Show the discrepancy on the plan view drawing under (a), above. Show the distances between the corner as previously restored or reestablished and (1) the corner as restored or reestablished, and (2) to at least 4 of the witness monuments shown on the drawing in (a), above.

N 9

(E) Was the corner reestablished through lost corner proportionate methods? If so, show the method, including the directions and distances to other public land survey corners used as evidence or used for proportioning the corner location.
NO

I, Donald Barnes, hereby certify that the corner points as identified by the corner code index were, in a field survey on, established, re-established, monumented, re-monumented, recovered or restored as expressed below and in conformance with the regulations and rules as required in the current manual of survey instructions of the United States Department of Interior, Bureau of Land Management.

COUNTY SURVEYOR FILING DATA

seal

Date of computer entry _____

Date microfilmed _____

Number of included sheets _____
CORNER CODE

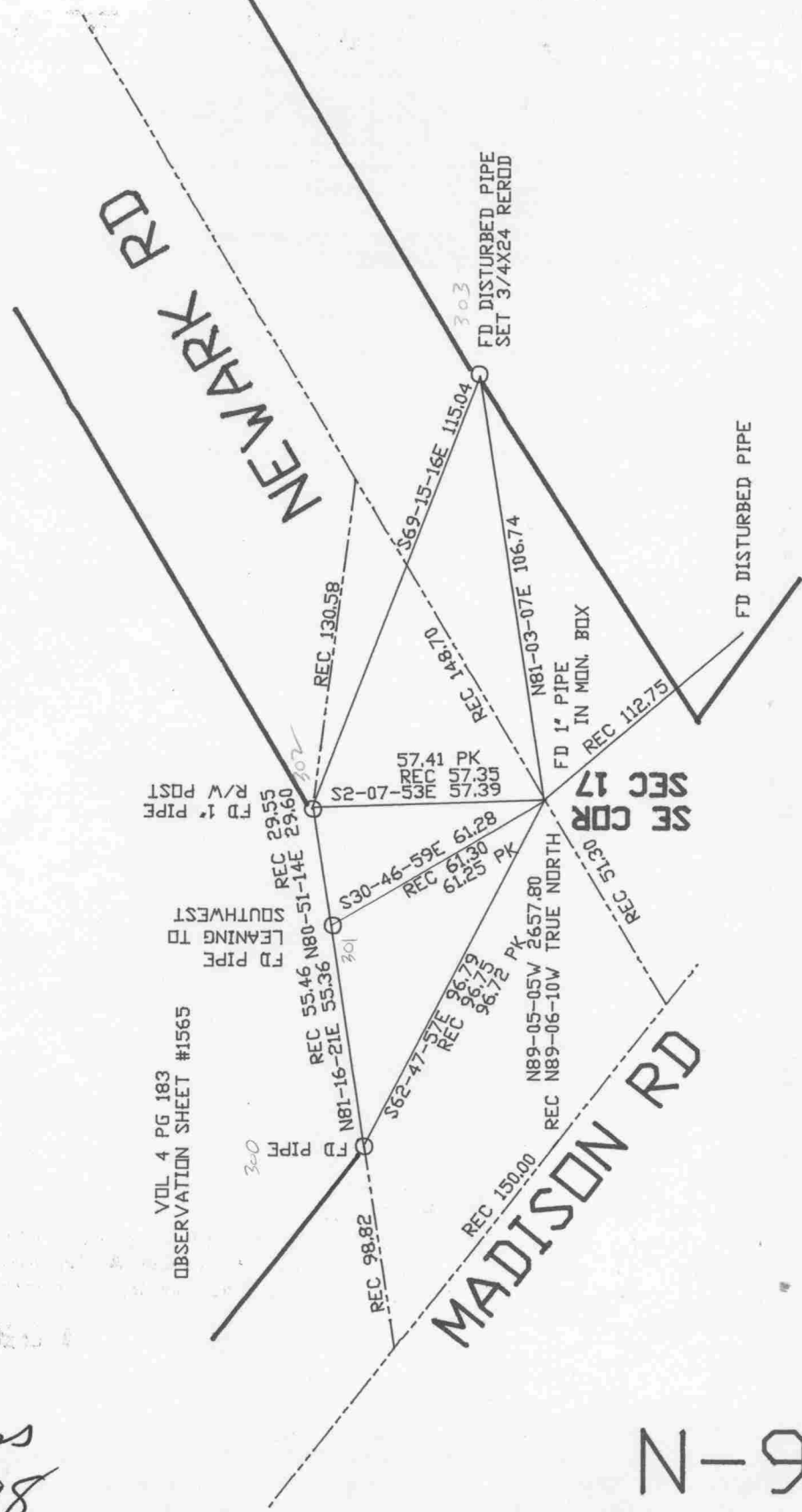
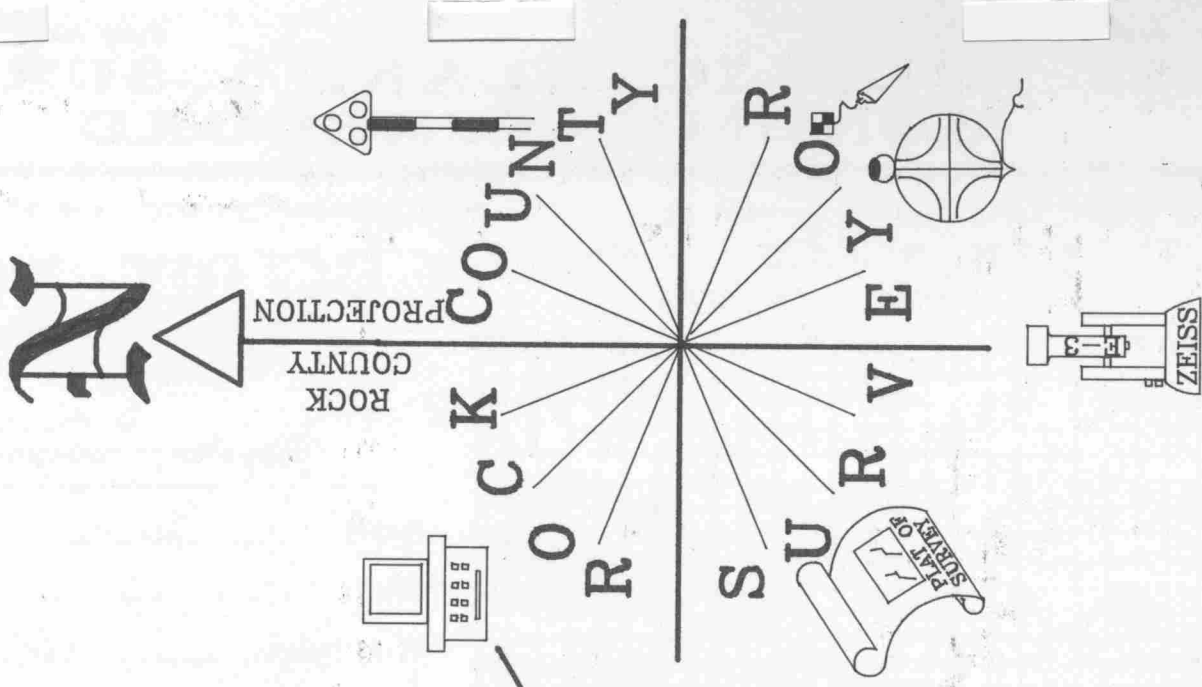
Donald Barnes

EMBOSS LAND SURVEYOR SEAL

A-E 7.08 REQUIREMENT

Oct 9, 1998

N-9



VOL 4 PG 183
OBSERVATION SHEET #1565

Donald Barnes
Oct 9, 1998

N-9