

U.S. PUBLIC LAND SURVEY MONUMENT RECORD

For Public Land Survey Corners in:

WI ADMINISTRATIVE CODE A-E 7.08 REQUIREMENT

T. 1N., R. 12E 4th P.M.

CORNER CODE INDEX

BELOIT TWP

TWP
ROCK COUNTY, WI

IF AVAILABLE
ROCK COUNTY COORDINATES PREFERRED

A	2	3	4	5	6	7	8	9	10	11	12	13	14	15	16	17	18	19	20	21	22	23	24
B	6	5	4	3	2	1																	
C	7	8	9	10	11	12																	
D	18	17	16	15	14	13																	
E	19	20	21	22	23	24																	
F	30	29	28	27	26	25																	
G	31	32	33	34	35	36																	
H																							
I																							
J																							
K																							
L																							
M																							
N																							
O																							
P																							
Q																							
R																							
S																							
T																							
U																							
V																							
W																							
X																							
Y																							
Z																							

North 222,471.82 Elev. _____

East 475,083.31

Hor. Datum COUNTY Vert. Datum _____


LATITUDE _____ ELLIPS. HT. _____

LONGITUDE _____

ELLIPS. DATUM
NAD83(91) _____ COUNTY _____ LIST _____

GPS (X) _____ TRAVERSE (X) _____

BASED ON THE FOLLOWING CONTROL:

PLACE MONUMENT SYMBOL  AT PROPER LOCATION ON ABOVE INDEX

 CORNER MONUMENT

WITNESS MONUMENT

(a)

BEARINGS ARE BASED ON:

FIELD BOOK _____ PAGE # _____

SHEET 1 OF 2

SHOW A PLAN VIEW DRAWING DEPICTING THE CORNER MONUMENT AND SURROUNDING PHYSICAL FEATURES, INCLUDING THE EXCAVATION AREA AND DEPTH.

PLANNING & ZONING COMMITTEE ADOPTED THE ABOVE FORM ON 12/2/1982

CORNER CODE J-9

BE545

(B) Describe any record evidence, monument evidence, occupational evidence, testimonial evidence or any other material evidence you considered, and whether the monument was found or placed.

- 1834 HARRISON NORTH BET. SECS 16 & 17
 - 1274.46 TRAIL TO TURTLE VILLAGE
 - 2640 QUARTER SEC. COR IN A RAVINE RUNNING EAST. SET POST & RAISED MOUND
 - 5280 COR TO SECS 8,9,16,17 NEAR HEAD OF DRAUGHT LEADING SOUTH. SET POST & RAISED MOUND.
 - NORTH BET. SECS 8 & 9
 - 297 SUMMIT OF RIDGE HEAD OF DRAUGHT
 - 2640 QUARTER SEC COR ON ? ? OF RIDGE CRS E & W. SET POST & RAISED MOUND.
 - 5280 SET COR. TO SECS 4,5,8,9 ON NORTH DECLIN OF RIDGE DESCENDING TO MARSH. SET POST & RAISED MOUND.
 - EAST ON RAND. BET. SECS 9 & 16
 - 300.96 TO SUMMIT OF RIDGE EAST SIDE OF DRAUGHT
 - 2640 TEMPY 1/4 SEC COR.
 - 5259.54 INT. EAST BOUNDARY 26.4 SOUTH OF POST COR. WEST
 - 2629.77 QUARTER SEC COR ON HIGH GROUND SET POST & MOUND
 - 5259.54 SEC COR.
 - EAST ON RND. BET. 8 & 17
 - 2640 TEMPY 1/4 SEC COR
 - 5288.58 INT. EAST BOUNDAY 9.24 SOUTH OF POST COR. WEST
 - 2644.29 QUARTER SEC COR. ON GROUND HIGH & EXTENDING SOUTHWESTLY. SET POST & RAISED MOUND
 - 5288.58 SEC COR.
- 1864 LOCKE VOL 1 PG 208 POST IN FENCE ON CORNER 2673.66 VAR 6-00 TO S 1/4 COR SEC 8.
- 1980 BARNES VOL 6 PG 48 DUG & FD NOTHING. SET ALUM. ON LINE WITH S 1/4 COR SEC 8 & THE S 1/16TH COR OF THE SE 1/4 OF SEC 8 AT SINGLE PROPORTIONATE DISTANCE. ANGLE OF 180-16-40 FROM E 1/4 8 TO E 1/4 SEC 17, ANGLE OF 179-43-20 FROM N 1/4 SEC 16 TO N 1/4 COR SEC 17
- 1980 BARNES VOL 6 PG 48 2687.88 TO S 1/4 COR SEC 8.

FOUND ALUM. MON.

C) Was the corner restored through acceptance of (1) an obliterated evidence location, or, (2) a found perpetuated location?
ACCEPTED FOUND MONUMENT.

D) Describe any material discrepancy between the location of the corner as restored or reestablished and the location of that corner as previously restored or reestablished by distance and direction. Show the discrepancy on the plan view drawing under (a), above. Show the distances between the corner as previously restored or reestablished and (1) the corner as restored or reestablished, and (2) to at least 4 of the witness monuments shown on the drawing in (a), above.

I, Donald Barnes, hereby certify that the corner points as identified by the corner code index were, in a field survey on, established, re-established, monumented, re-monumented, recovered or restored as expressed below and in conformance with the regulations and rules as required in the current manual of survey instructions of the United States Department of Interior, Bureau of Land Management.

COUNTY SURVEYOR FILING DATA

seal

Date of computer entry _____

Number of included sheets _____

CORNER CODE

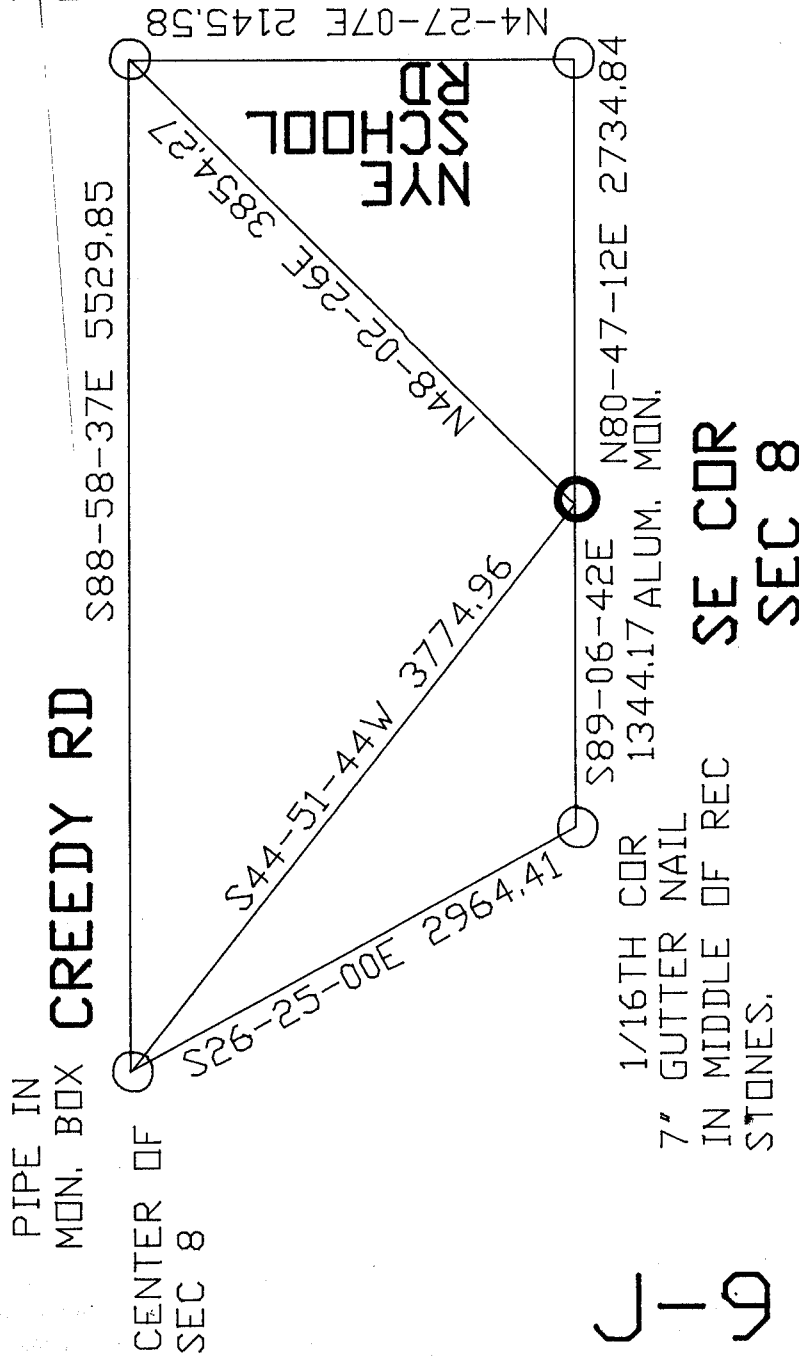
EMBOSS LAND SURVEYOR SEAL

A-E 7.08 REQUIREMENT

OCT 29, 1998

5-9

Donald Barnes
 OCT 9, 1998



FED "CENTRAL AZM."
 BRASS DISK IN
 CONCRETE MON.
 STA. #305
 SOUTH SIDE OF
 SRD & EAST OF
 RD INT.

FED "CENTRAL"
 BRASS DISK IN
 CONCRETE MON.
 STA #112
 EAST SIDE OF RD.

