

U.S. PUBLIC LAND SURVEY MONUMENT RECORD

For Public Land Survey Corners in:

WI ADMINISTRATIVE CODE A-E 7.08 REQUIREMENT

T. 1 N., R. 12 E 4th P.M.

CORNER CODE INDEX

BELOIT TWP
ROCK COUNTY, WI

IF AVAILABLE
ROCK COUNTY COORDINATES PREFERRED

A	1	2	3	4	5	6	7	8	9	10	11	12	13	14	15	16	17	18	19	20	21	22	23	24	25
B	6	5	4	3	2	1																			
C																									
D																									
E																									
F	7	8	9	10	11	12																			
G																									
H																									
I																									
J																									
K	18	17	16	15	14	13																			
L																									
M																									
N																									
O																									
P	19	20	21	22	23	24																			
Q																									
R																									
S																									
T	30	29	28	27	26	25																			
U																									
V																									
W																									
X																									
Y	31	32	33	34	35	36																			
Z																									

North _____ Elev. _____

East _____

Hor. Datum _____ Vert. Datum _____

LATITUDE _____ ELLIPS. HT. _____


LONGITUDE _____

ELLIPS. DATUM _____

NAD83(91) _____ COUNTY _____ LIST _____

GPS (X) _____ TRAVERSE (X) _____

BASED ON THE FOLLOWING CONTROL:

PLACE MONUMENT SYMBOL  AT PROPER LOCATION ON ABOVE INDEX

 CORNER MONUMENT

WITNESS MONUMENT

(a)

BEARINGS ARE BASED ON:

See Back

FIELD BOOK _____ PAGE # _____

SHEET _____ OF _____

SHOW A PLAN VIEW DRAWING DEPICTING THE CORNER MONUMENT AND SURROUNDING PHYSICAL FEATURES, INCLUDING THE EXCAVATION AREA AND DEPTH.

PLANNING & ZONING COMMITTEE ADOPTED THE ABOVE FORM ON 12/2/1982

CORNER CODE Z-1.5

B) Describe any record evidence, monument evidence, occupational evidence, testimonial evidence or any other material evidence you considered, and whether the monument was found or placed.

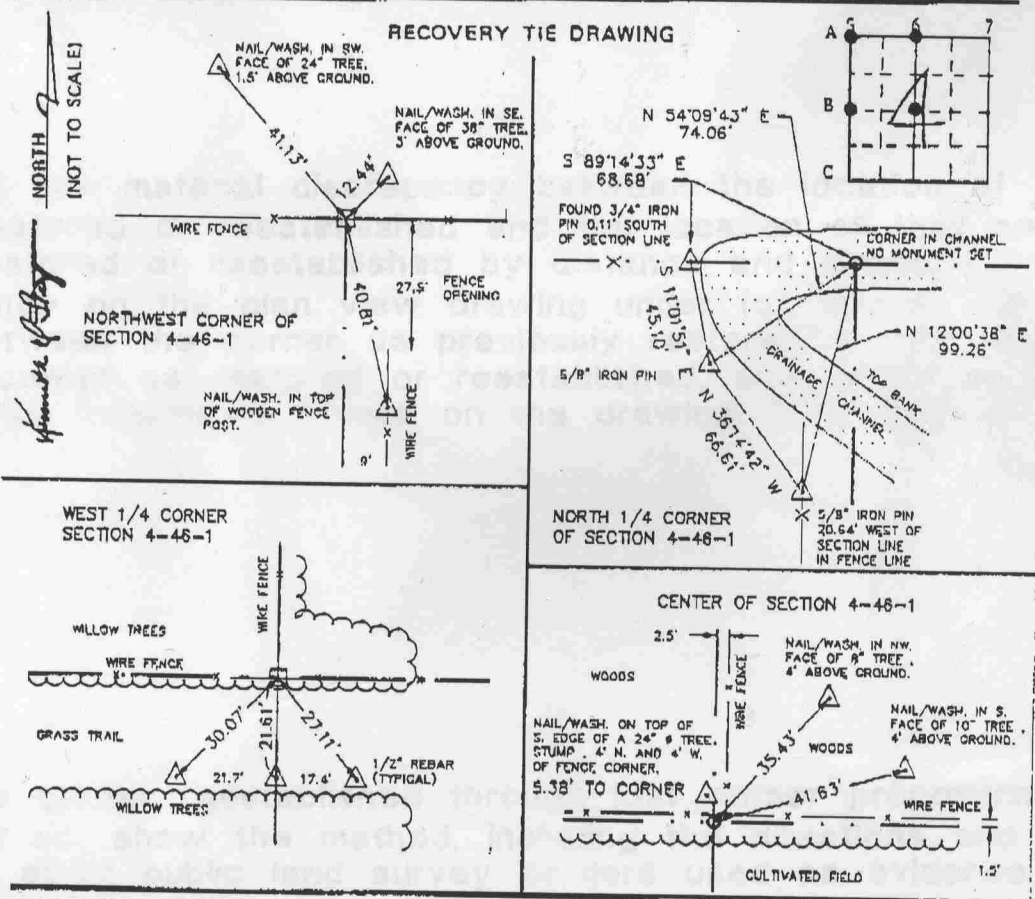
"MONUMENT RECORD"

OF

LAND SURVEY MONUMENTS SITUATED IN SECTION 4, TOWNSHIP 46 NORTH,
RANGE 1 EAST, OF THE 3RD PRINCIPAL MERIDIAN, WINNEBAGO
COUNTY, ILLINOIS.

MONUMENT DESCRIPTION AND REMARKS: N.W. CORNER - FOUND CONCRETE MONUMENT
N. 1/4 CORNER - NO MONUMENT SET
W. 1/4 CORNER - FOUND CONCRETE MONUMENT
CENTER OF SECTION - FOUND 3/4" IRON PIN

9442387 08/15/1994 11:15A
Ken Staaf, Winnebago County Recorder



STATE OF ILLINOIS SS
 COUNTY OF WINNEBAGO
 I, GORDON F. STANNARD, HEREBY CERTIFY THAT THIS DOCUMENT WAS PREPARED UNDER MY DIRECTION IN ACCORDANCE WITH THE PUBLIC ACT 79-649 AND THE ABOVE DATA IS GIVEN UNDER MY HAND AND SEAL THIS 12TH DAY OF AUGUST, 1994 A.D.
Gordon F. Stannard
 ILLINOIS REGISTERED LAND SURVEYOR NO. 2388

SPACE RESERVED FOR RECORDING OFFICER
 INDEX CODE
A5
A6
B5
B6



emboss/stamped
 Number of included sheets _____
 A-E 7.08 REQUIREMENT CORNER CODE Z-1.5