

U.S. PUBLIC LAND SURVEY MONUMENT RECORD

For Public Land Survey Corners in:
T. 1 N., R 13 E.

WI ADMINISTRATIVE CODE A-E 7.08 REQUIREMENT

CORNER CODE INDEX

TURTLE TWP

ROCK COUNTY, WI

IF AVAILABLE
ROCK COUNTY COORDINATES PREFERRED

	1	2	3	4	5	6	7	8	9	10	11	12	13	14	15	16	17	18	19	20	21	22	23	24	25
A																									
B																									
C																									
D																									
E																									
F																									
G																									
H																									
J																									
K																									
L																									
M																									
N																									
O																									
P																									
Q																									
R																									
S																									
T																									
U																									
V																									
W																									
X																									
Y																									
Z																									

PLACE MONUMENT SYMBOL **◆** AT PROPER LOCATION ON ABOVE INDEX

NORTH _____ ELEV. _____

EAST _____

HOR. DATUM _____ VERT. DATUM _____

LATITUDE _____ ELLIPS. HT. _____

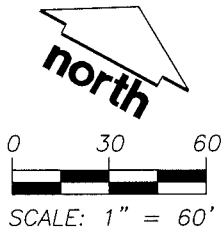
LONGITUDE _____

GPS (X) _____ TRAVERSE (X) _____

BASED ON THE FOLLOWING CONTROL:

◆ CORNER MONUMENT ○ WITNESS MONUMENT

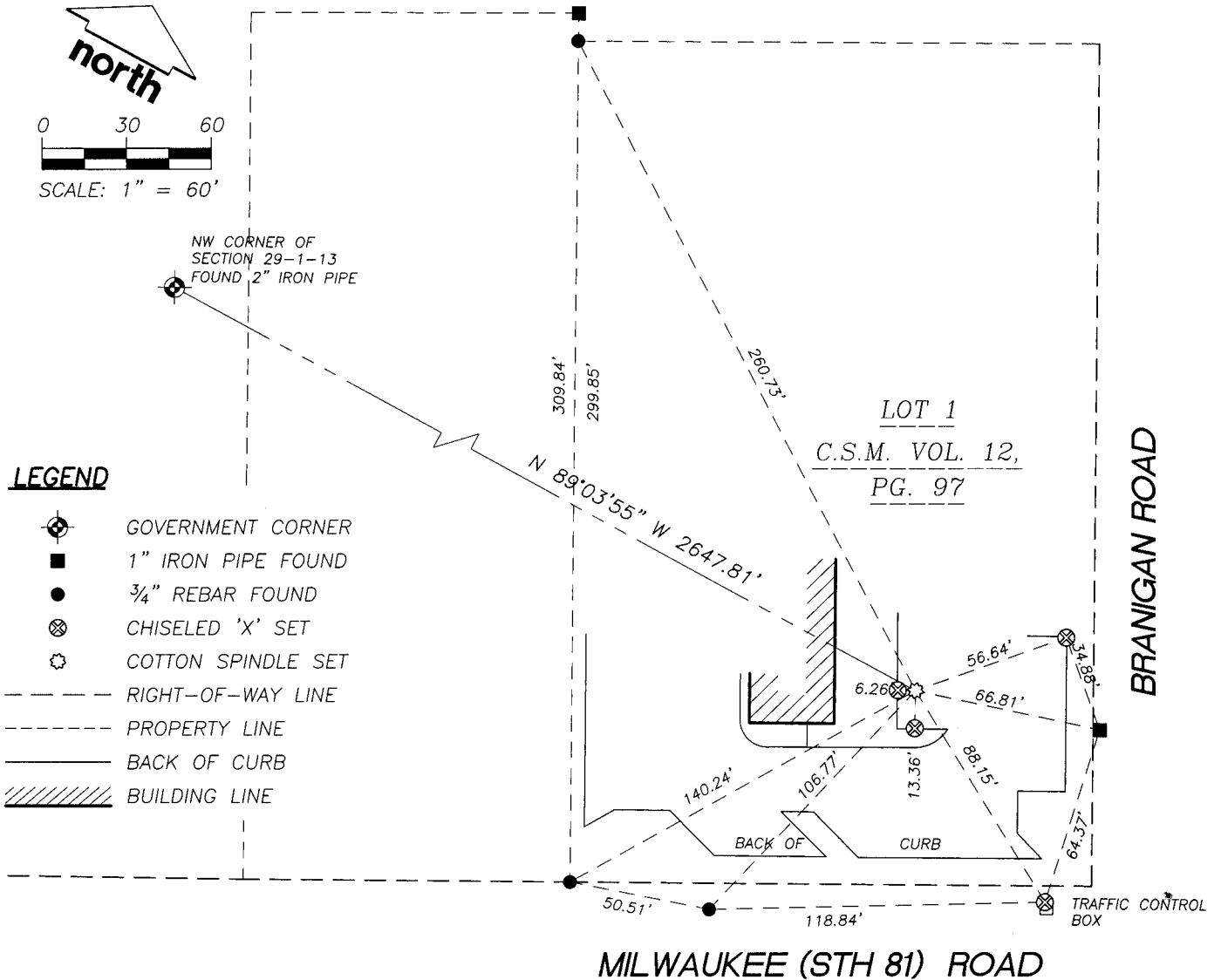
BEARINGS ARE BASED ON ASSUMED COORDINATES



NW CORNER OF SECTION 29-1-13
FOUND 2" IRON PIPE

LEGEND

- ◆ GOVERNMENT CORNER
- 1" IRON PIPE FOUND
- 3/4" REBAR FOUND
- ⊗ CHISELED 'X' SET
- ⊗ COTTON SPINDLE SET
- - - RIGHT-OF-WAY LINE
- - - PROPERTY LINE
- BACK OF CURB
- ▨ BUILDING LINE



(B) Describe any record evidence, monument evidence, occupational evidence, testimonial evidence or any other material evidence you considered, and whether the monument was found or placed.

Section corner was removed during construction. Set a Cotton Spindle in the parking lot at the North 1/4 corner of Section 29, using information from a survey by R.H. Batterman, Inc. and a C.S.M. as Recorded in Volume 12, Page 97.

(C) Was the corner restored through acceptance of (1) an obliterated evidence location, or, (2) a found perpetuated location?

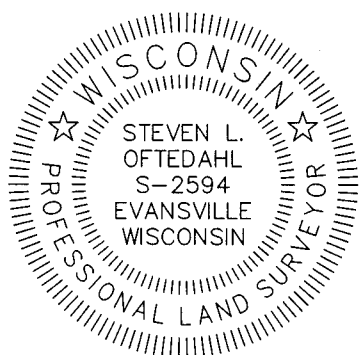
The corner was replaced at a perpetuated location.

(D) Describe any material discrepancy between the location of the corner as restored or reestablished and the location of that corner as previously restored or reestablished by distance and direction. Show the discrepancy on the plan view drawing under (a), above. Show the distances between the corner as previously restored or reestablished and (1) the corner as restored or reestablished, and (2) to at least 4 of the witness monuments shown on the drawing in (a) above.

(E) Was the corner reestablished through lost corner proportionate methods? If so, show the method, including the directions and distances to other public land survey corners used as evidence or used for proportioning the corner location.

No

I, Steven L. Oftedahl, Wisconsin Professional Land Surveyor, S-2594, hereby certify that the corner location as identified by the corner code index was determined by me under by direction and control and that this U.S. Public Land Survey Monument Record is correct and complete to the best of my knowledge and belief.



Steven L. Oftedahl
OCTOBER 28, 2008

Number of included sheets 1

CORNER CODE R-7(2)