

# U.S. PUBLIC LAND SURVEY MONUMENT RECORD

For Public Land Survey Corners in:

WI ADMINISTRATIVE CODE A-E 7.08 REQUIREMENT

T. 1N., R. 13E

### CORNER CODE INDEX

A	1	2	3	4	5	6	7	8	9	10	11	12	13	14	15	16	17	18	19	20	21	22	23	24	25
B																									
C	6					5				A				3			2							1	
D																									
E																									
F																									
G	7					8				9				10			11							12	
H																									
J																									
K	18					17				16				15			14							13	
L																									
M																									
N																									
O																									
P	19					20				21				22			23							24	
Q																									
R																									
S																									
T	30					29				28				27			26							25	
U																									
V																									
W																									
X	31					32				33				34			35							36	
Y																									
Z																									

TURTLE TWP  
ROCK COUNTY WI

IF AVAILABLE  
ROCK COUNTY COORDINATES REFERRED

North 2097,913.15 Elev. \_\_\_\_\_

East 519,985.519,958.26  
MAY 200A ADJUSTMENT  
Hor. Datum \_\_\_\_\_ Vert. Datum \_\_\_\_\_

LATITUDE \_\_\_\_\_ ELLIPS. HT. \_\_\_\_\_

LONGITUDE \_\_\_\_\_

GPS (X) \_\_\_\_\_ TRAVERSE (X) \_\_\_\_\_

BASED ON THE FOLLOWING CONTROL:

PLACE MONUMENT SYMBOL  AT PROPER LOCATION ON ABOVE INDEX

CORNER MONUMENT

WITNESS MONUMENT

(a)

BEARINGS ARE BASED ON:

FIELD BOOK \_\_\_\_\_ PAGE # \_\_\_\_\_

SHEET 1 OF 2

SHOW A PLAN VIEW DRAWING DEPICTING THE CORNER MONUMENT AND SURROUNDING PHYSICAL FEATURES, INCLUDING THE EXCAVATION AREA AND DEPTH.

PLANNING & ZONING COMMITTEE ADOPTED THE ABOVE FORM ON 12/2/1982

CORNER CODE U-19(2)

**TU610**

*(B) Describe any record evidence, monument evidence, occupational evidence, testimonial evidence or any other material evidence you considered, and whether the monument was found or placed.*

- 1836 O. LYON APRIL EAST BETWEEN SECTIONS 26 & 35  
5306.4 INTERSECTED N & S LINE 21.12' NORTH OF POST  
LAND ROLLING & 2<sup>ND</sup> RAZTE TIMBER BLACK WHITE &  
BUR OAK, UNDER GROWTH SAME  
WEST CORRECTED BETWEEN SECTIONS 26 & 35
- 2653.2 SET QUARTER SECTION POST {BUR OAK 9 S69 1/2 W  
50.16' BUR OAK 8 N35W 44.88'
- 5306.4 SECTION CORNER.
- 1961 BATTERMAN VOL 4 PG 88 DUG HOLE 20-X20X4' & FOUND  
NOTHING. 2663.20 TO SW & SE CORNERS OF SEC 26. SET 1"  
PIPE ON LINE & 1/2 WAY BETWEEN SEC. CORNERS
- 1964 SHIMEALL MAP #05013 FD PIPE
- 1967 LEE CSM VOL 1 PG 151 FD PIPE
- 1989 LEE CSM VOL 14 PG 108 FD PIPE S88-03-53E 250.00' TO A  
POINT OPPOSITE A PROPERTY COR. THAT IS SOUTH 40.02 ON  
THE R/W LINE. THAT COR IS S88-03-53E 250.00 OF THE NW  
COR OF PROPERTY COR. N/S CENTER OF SECTION IS A  
BEARING OF SOUTH.
- 1995 BARNES V-19 FOUND 1" PIPE. 2663.02 (REC 2663.20) TO SW  
COR SEC 26 & 2662.68' (REC 2663.20) TO SE COR SEC 26.  
N88-26-19W 2663.02 TO SW COR SEC 26 & S88-26-24E  
2662.68 TO SE COR SEC 26
- 1998 HOUL CSM VOL 21 PG 288 FD PIPE. 5320.84 TO S 1/4 COR  
SEC 35.
- 2003 WIDOT V-19(1) PROJECT 3663-00-21 SHEET 4.5. & MAP  
#25269 & #25126 FD 1" PIPE  
N/S=205,913.153; E/W 519,958.258  
RECORD FILED BY BARNES. OCTOBER 31, 2003 ADJUSTMENT  
= N/S 205,913.152 E/W 519,958.255

**FD 1" PIPE & REFERENCED SAME**

*C) Was the corner restored through acceptance of (1) an obliterated evidence location, or, (2) a found perpetuated location?*

**ACCEPTED FD PERPETUATED LOCATION**

*D) Describe any material discrepancy between the location of the corner as restored or reestablished and the location of that corner as previously restored or reestablished by distance and direction. Show the discrepancy on the plan view drawing under (a), above. Show the distances between the corner as previously restored or reestablished and (1) the corner as restored or reestablished, and (2) to at least 4 of the witness monuments shown on the drawing in (a), above.*

*(E) Was the corner reestablished through lost corner proportionate methods? If so, show the method, including the directions and distances to other public land survey corners used as evidence or used for proportioning the corner location.*

I, **Donald Barnes**, hereby certify that the corner location as identified by the corner code index was determined by me under my direction and control and that this U.S. Public Land Survey Monument Record is correct and complete to the best of my knowledge and belief.

Seal

*Donald Barnes*  
Emboss

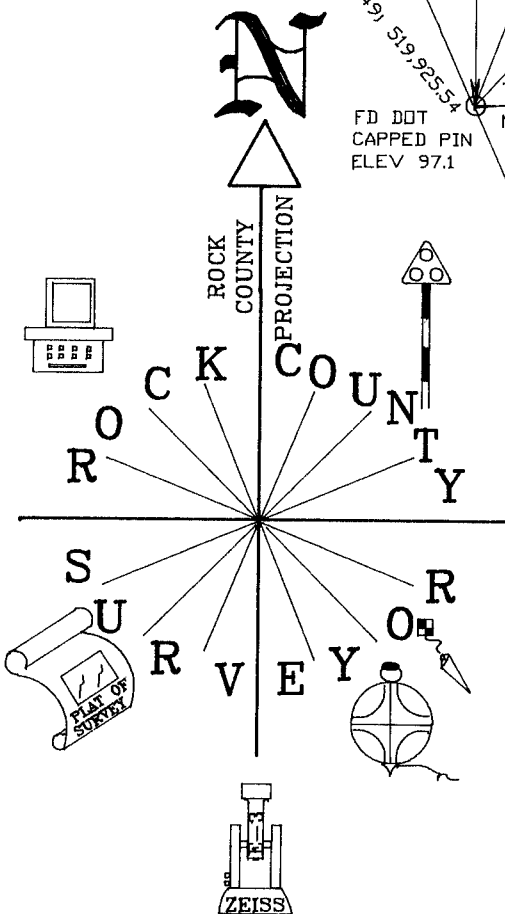
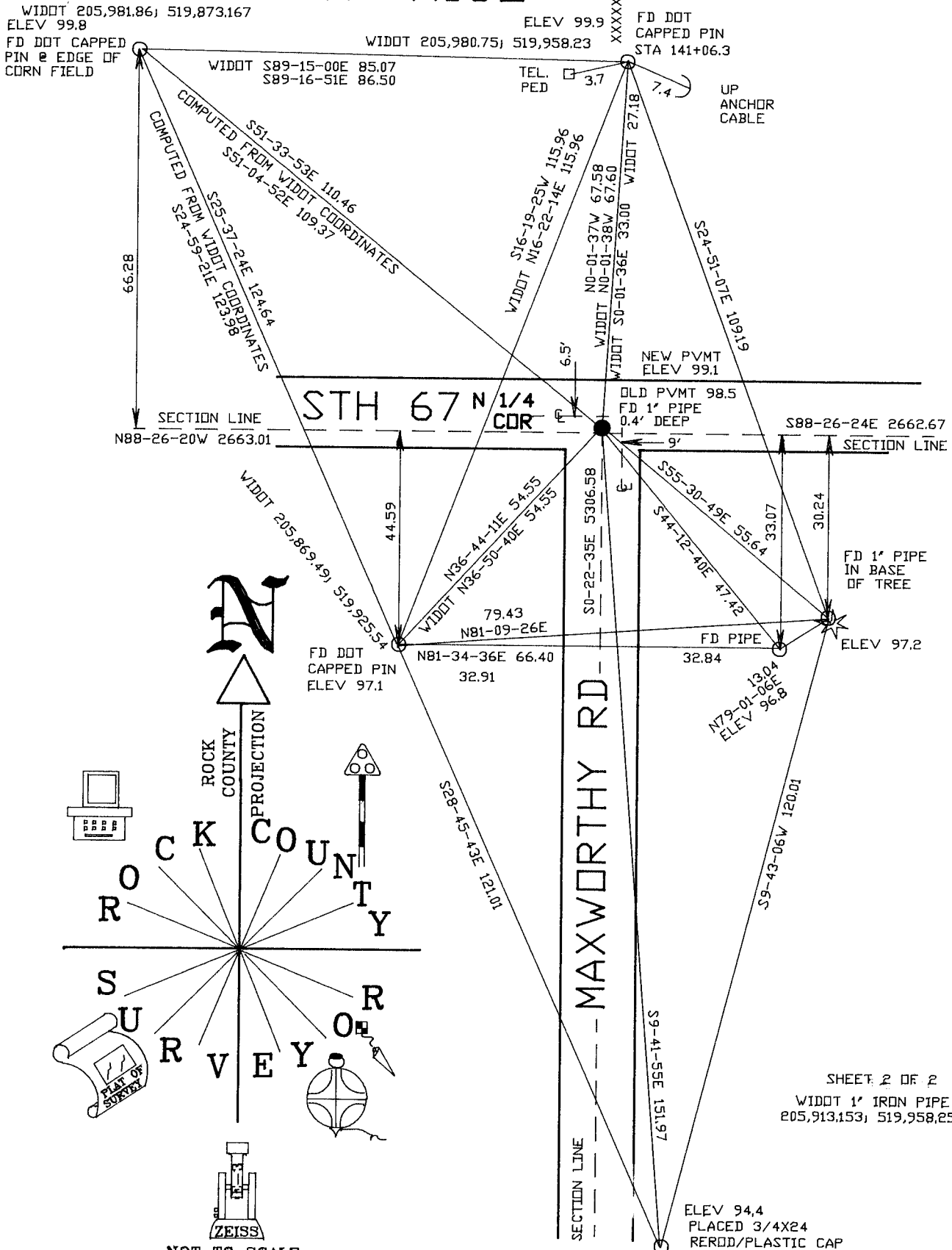
SHEET 1 OF 2

*May 19, 2004*

**CORNER CODE V-19(2)**

**A.E. 7.08 REQUIREMENT**

N 1/4 COR  
 SEC 35  
 TURTLE TWP  
 T1N R13E



NOT TO SCALE  
 OBSERVATION SHEET  
 ASSUMED ELEVATION DATUM

SHEET 2 OF 2  
 WIDDT 1" IRON PIPE  
 205,913.153; 519,958.258

EMBRossed  
 Seal  
*Daniel P. Jones*  
 August 5 2004

V-19(2)