

Paper weight-110# (minimum)

Black nonfading ink required

U.S. PUBLIC LAND SURVEY MONUMENT RECORD

For Public Land Survey Corners In:

WI ADMINISTRATIVE CODE A-E 7.08 REQUIREMENT

T/ 1 N. R. 3 E. 4th P.M.

TURTLE

REV 10/23/2004 USMONREC.DWG

CORNER CODE INDEX

TWP

A	1	2	3	4	5	6	7	8	9	10	11	12	13	14	15	16	17	18	19	20	21	22	23	24	25	A
B		6					5				4				3			2			1					B
C																										C
D																										D
E																										E
F																										F
G																										G
H																										H
J																										J
K																										K
L																										L
M																										M
N																										N
O																										O
P																										P
Q																										Q
R																										R
S																										S
T																										T
U																										U
V																										V
W																										W
X																										X
Y																										Y
Z																										Z

ROCK COUNTY WI

IF AVAILABLE
ROCK COUNTY COORDINATES PREFERRED

North _____ Elev. _____

East _____

Hor. Datum _____ Vert. Datum _____

LATITUDE _____ ELLIPS. HT. _____

LONGITUDE _____

NAD83(91) _____ NETWORK ADJ. YR 2012

GPS (X) _____ TRAVERSE (X) X

BASED ON THE FOLLOWING CONTROL:

Township Project _____

◆ CORNER MONUMENT

○ WITNESS MONUMENT

BEARINGS ARE BASED ON: ROCK COUNTY PROJECTION

FIELD BOOK _____ PAGE # _____
OR OBSERVATION SHEET _____

SHEET 1 OF 2

SHOW A PLAN VIEW DRAWING DEPICTING THE CORNER MONUMENT AND SURROUNDING PHYSICAL FEATURES, INCLUDING THE EXCAVATION AREA AND DEPTH.

PLANNING & ZONING COMMITTEE ADOPTED THIS FORM ON 12/2/1982

CORNER CODE V-9(2)

TU605 SECORSEC29

(B) Describe any record evidence, monument evidence, occupational evidence, testimonial evidence or any other material evidence you considered, and whether the monument was found or placed.

1836 LYONS SET POST CORNER TO SECTIONS 28&29,32&33 & MADE MOUND OF EARTH & SOD.

18?? VOL 6 PG 331 TOWNSHIP ROAD RECORDS. CENTER OF ROAD AT CORNER.

1973 LEE VOL 5 PG 37 SET ALUM. MON. & REFERENCED SAME. 1.5' NORTH OF CENTER OF PVMT.

1994 BARNES V-9 FOUND ALUM. MON. & TIES. ACCEPTED FOUND MONUMENT.

FD ALUM MON & TIES 2.5' NORTH OF CENTER OF PVMT.

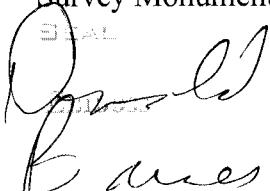
C) Was the corner restored through acceptance of (1) an obliterated evidence location, or, (2) a found perpetuated location?

ACCEPTED FOUND ALUM. MONUMENT.

D) Describe any material discrepancy between the location of the corner as restored or reestablished and the location of that corner as previously restored or reestablished by distance and direction. Show the discrepancy on the plan view drawing under (a), above. Show the distances between the corner as previously restored or reestablished and (1) the corner as restored or reestablished, and (2) to at least 4 of the witness monuments shown on the drawing in (a), above.

(E) Was the corner reestablished through lost corner proportionate methods? If so, show the method, including the directions and distances to other public land survey corners used as evidence or used for proportioning the corner location.

I, DONALD BARNES, hereby certify that the corner location as identified by the corner code index was determined by me under my direction and control and that this U.S. Public Land Survey Monument Record is correct and complete to the best of my knowledge and belief.


Barnes
May 15, 2012

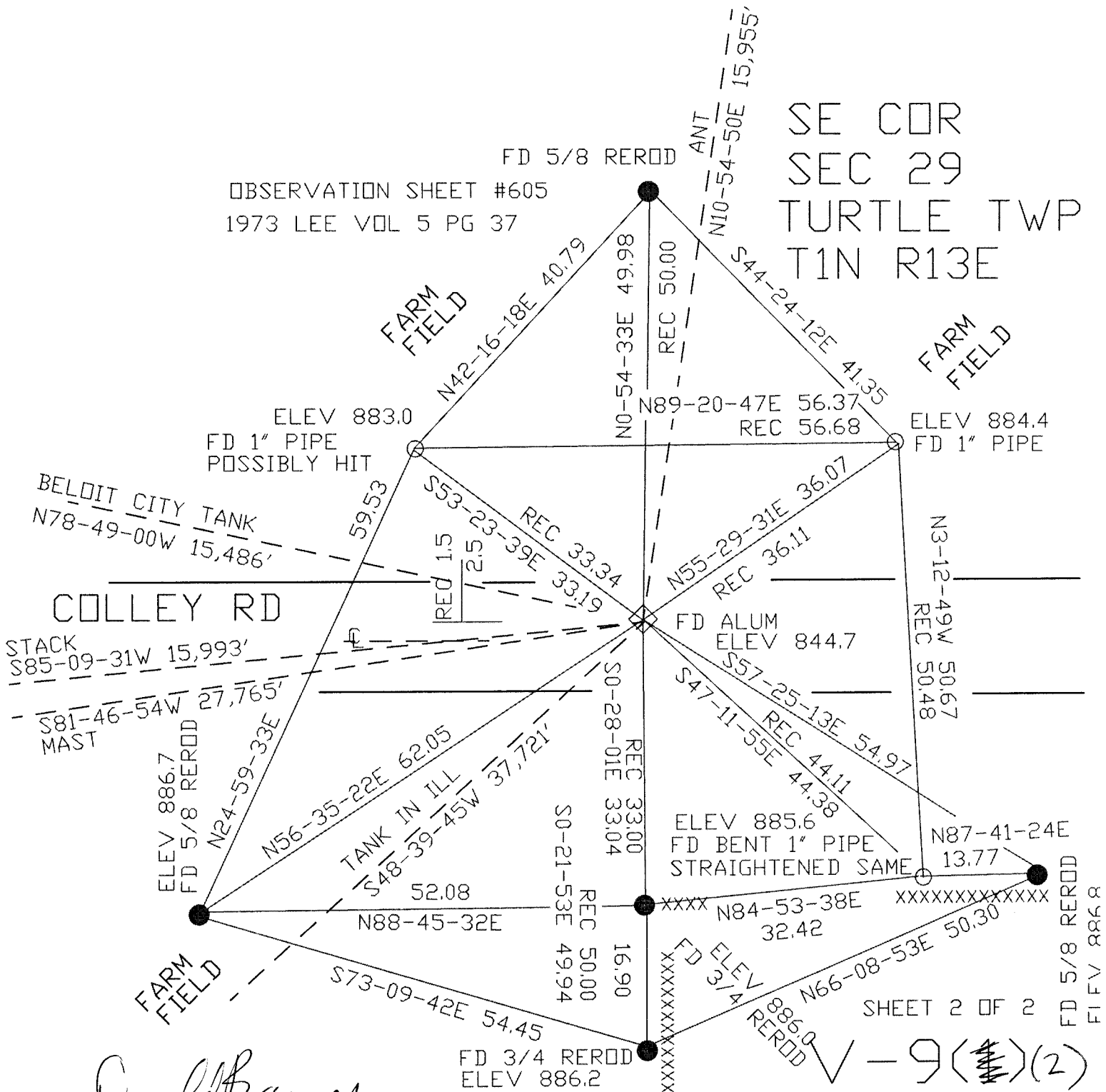
SHEET 1 OF 2

CORNER CODE V-9(2)

A.E. 7.08 REQUIREMENT

OBSERVATION SHEET #605
 1973 LEE VOL 5 PG 37

SE COR
 SEC 29
 TURTLE TWP
 T1N R13E



Arnold Barnes
 May 15, 2012

V-9(11)(2)