

Paper weight-110# (minimum)

Black nonfading ink required

U.S. PUBLIC LAND SURVEY MONUMENT RECORD

For Public Land Survey Corners In:
T. 1 N. R. 13 E. 4th P.M.

WI ADMINISTRATIVE CODE A-E 7.08 REQUIREMENT

REV 10/23/2004 USMONREC.DWG

CORNER CODE INDEX

TURTLE TWP

ROCK COUNTY WI

IF AVAILABLE

ROCK COUNTY COORDINATES PREFERRED

A	1	2	3	4	5	6	7	8	9	10	11	12	13	14	15	16	17	18	19	20	21	22	23	24	25	A
B		6				5				4					3					2					1	B
C																										C
D																										D
E																										E
F																										F
G																										G
H																										H
J																										J
K																										K
L																										L
M																										M
N																										N
O																										O
P																										P
Q																										Q
R																										R
S																										S
T																										T
U																										U
V																										V
W																										W
X																										X
Y																										Y
Z																										Z

North _____ Elev. _____

East _____

Hor. Datum _____ Vert. Datum _____

LATITUDE _____ ELLIPS. HT. _____

LONGITUDE _____

NAD83(91) _____ NETWORK ADJ. YR _____

GPS (X) _____ TRAVERSE (X) _____

BASED ON THE FOLLOWING CONTROL:

PLACE MONUMENT SYMBOL AT PROPER LOCATION ON ABOVE INDEX

CORNER MONUMENT

WITNESS MONUMENT

BEARINGS ARE BASED ON: ROCK COUNTY PROJECTION

FIELD BOOK _____ PAGE # _____
OR OBSERVATION SHEET _____

SHEET 1 OF 4

SHOW A PLAN VIEW DRAWING DEPICTING THE CORNER MONUMENT AND SURROUNDING PHYSICAL FEATURES, INCLUDING THE EXCAVATION AREA AND DEPTH.

PLANNING & ZONING COMMITTEE ADOPTED THIS FORM ON 12/2/1982

CORNER CODE T-9(2)

TU596 E1/4CORSEC29 T1NR13E

(B) Describe any record evidence, monument evidence, occupational evidence, testimonial evidence or any other material evidence you considered, and whether the monument was found or placed.

1911 KERCH VOL 3 PG 64 SET 2" GAS PIPE
1911 KERCH BK 7 PG 47 2666.4 TO NE COR SEC 29 & 5318 TO W
1/4 COR SEC 29.
1972 LEE #11941 FD PIPE. N88-48-04W 826.97 TO PIPE ON
WEST R/W OF I-90.
1987 BARNES T-9 FD CI & REFERENCED SAME
1988 COMBS #12343,12345,12344 STATES NOTHING ABOUT
MON. S89-00E 1332?.55 TO REROD, N89-34-05W 467.86
TO NEAR EAST R/W LINE OF I-90
1989 COMBS #12334
1992 LEUENBERGER #5236 & 5237 STATES NOTHING ABOUT
MON S88-46-42E 1332.57 TO 1/16TH COR, N89-27-42W
468.28 TO REBAR NEAR EAST R/W LINE OF I-90, SO-58-43E
2648.12 TO SE COR SEC 29, & N01-03-15W 2668.32 TO NE
COR SEC 29.
1994 BARNES T-9(1) FD CI & REFERENCE PIPES
1995 BARNES VOL 6 PG 444 SO-58-41E 2648.15 TO SE COR SEC
29, N89-27-43W 5316.94 TO W 1/4 COR SEC 29, & N1-03-
08W 2668.33 TO NE COR SEC 29
1996 KREBS #8902 FD CI
1996 KREBS #8893 SAME AS #8902 5327.59 FROM CI @ SE COR
SEC 28 TO ALUM @ SE COR SEC 29
1999 KREBS #7352 & 7353 FD CI S88-46-44E 1332.55 TO FD
REBAR, N1-03-20W 2668.20 TO NE COR SEC 29, SO-58-44E
2648.15 TO ALUM @ SW COR SEC 28, ANGLE 92-02-36 @
SE COR SEC 29 FROM E 1/4 COR SEC 29 TO ALUM @ S 1/4
COR SEC 28
2000 KREBS #7593 & 7594 STATES NOTHING ABOUT MON. SO-
58-44E 2648.15 TO SE COR SEC 29, N1-03-20W 2668.20
TO FD PK @ NW COR SEC 28, SW 28 TO S 1/4 COR SEC 28
S88-56-08E 2661.46. ANGLE 92-02-36 @ SW COR SEC 28
FROM W 1/4 COR SEC 28 TO S 1/4 COR SEC 28.
2001 HOULE CSM VOL 24 PG 247 FD CI S88-46-34E 330.29 TO
3/4" SET REBAR & N89-27-43W 468.50 TO 3/4" SET REBAR
2002 HOULE CSM VOL 25 PG 233 SAME AS CSM VOL 27 PG 257
2002 HOULE CSM VOL 25 PG 393 FD CI S88-46-44E 1889.50 TO
SET REBAR ON WEST R/W OF GATEWAY BOULEVARD.
2002 HOULE CSM VOL 25 PG 396 FD CI N89-27-43W 468.50 TO
SET IRON REBAR, S88-46-44E 330.29 TO FD IRON REBAR.
2002 HOULE CSM VOL 25 PG 399 FD CI S88-46-44E 330.29 TO
FD REBAR. SO-58-40E 2648.17 TO FD ALUM @ SE COR
SEC 29.
2003 HOULE CSM VOL 26 PG 72 FD C.I. S88-46-44E 1332.55 TO
FD REBAR, S88-46-44E 556.95 TO REBAR, S88-46-44E
5335.70 TO FD REBAR @ E 1/4 COR SEC 28
2003 HOULE BK 32 PG 611 "EAGLES RIDGE WEST" FD CI S88-46-
44E 5450.78 TO SET 1-1/4 REROD @ E 1/4 COR SEC 28.
2004 HOULE CSM VOL 27 PG 193 FD CI S88-46-04E 1332.55 TO
FD PIPE
2004 HOULE CSM VOL 27 PG 257 DOC # 1676165 FD CI SO-58-
44E 2648.17 TO SE COR SEC 29 & ANGLE 88-24-11 @ SE
COR SEC 29 FROM SOUTH LINE OF SE 1/4 SEC 29 TO E 1/4
COR SEC 29. N89-22-55W 1127.13 FROM SE COR SEC 29
TO PROPERTY COR.
2005 HOULE BK 32 PG 716 "GATEWAY BUSINESS PARK" S88-46-
42E 559.52 TO REROD, N89-27-43W 468.50 TO REROD
NEAR EAST R/W OF INTERSTATE. 61.73 BETWEEN REROD
ON EAST SIDE OF INTERSTATE & REROD ON WEST SIDE.
THERE IS A E/W 20 UTILITY EASEMENT ON SOUTH SIDE OF
MON.

SHEET 2 OF 4

Seal
Ernest
Ernest Barnes
May 15 2012

CORNER CODE T-9(2)

TU596 E1/4CORSEC29 T1NR13E
 2005 HOULE #15246,15247,15248,15249 FD CI N1-03-15W 2668.32 TO FD PK @ NE COR SEC 29, SO-58-43E 2648.12 TO SE COR SEC 29, N89-27-42W 468.28 (N89-27-43W 468.50) TO REBAR NEAR EAST R/W I-90, S88-46-42E 1332.57 TO 1/16TH COR, S88-46-42E 2665.14 TO CENTER OF SEC 28, N89-27-42W 5316.54 TO W 1/4 COR SEC 29
 2006 HOULE CSM VOL 31 PG 94 FD CI N89-27-42W 468.28 TO SET REBAR, S88-46-42E 559.53 TO SET REBAR ON WEST R/W OF APEX DR., S88-46-42E 629.53 TO SET REBAR ON EAST R/W OF APEX CR., SO-58-43E 2648.12 TO FD PIPE @ SE COR SEC 29, S88-46-42E 5335.67 TO FD REBAR @ E 1/4 COR SEC 28
 2007 HOULE #15626 & 15627 FD CI. S88-46-42E 5335.67 TO REBAR @ E 1/4 COR SEC 28, SO-58-43E 2648.12 TO FD PIPE @ SW COR SEC 28, & N89-27-42W 468.28 TO REBAR NEAR EAST R/W LINE OF I-90.
 2007 LEUENBERGER #15807 & 15808 FD CI N88-46-42W 559.53 TO WEST R/W & N89-27-42W 468.28 TO REROD NEAR I-90 EAST R/W
 2007 HOULE #15814 & #15813 STATES NOTHING ABOUT MON. NO DISTANCE NOR BEARING TO NE COR SEC 29.
 2008 GARD #16134 FD CI N1-03-15W 2668.32 TO SET COTTON GIN @ NE COR SEC 29.
 2009 GARD CSM VOL 33 PG 236 BEARING & DISTANCE TO NE COR SEC 29 IS TOO SMALL TO READ.
 2012 BARNES COUNTY ADJUSTMENT. E 1/4 COR SEC 29 TO SE COR SEC 29 SO-58-40E 2648.14, N89-27-43W 5316.94 TO W 1/4 COR SEC 29, S88-46-42E 5335.72 TO E 1/4 COR SEC 28, N1-03-08W 2668.33 TO NE COR SEC 29, ANGLE 88-24-15 @ SE COR SEC 29 FROM S 1/4 COR SEC 29 TO E 1/4 COR SEC 29, ANGLE 92-02-34 @ SE COR SEC 29 FROM E 1/4 COR SEC 29 TO S 1/4 COR SEC 28.

C) Was the corner restored through acceptance of (1) an obliterated evidence location, or, (2) a found perpetuated location?

CI AND REFERENCE PIPES WERE DESTROYED. SET ALUM. MON USING MY OLD FIELD TRAVERSE DATA.

D) Describe any material discrepancy between the location of the corner as restored or reestablished and the location of that corner as previously restored or reestablished by distance and direction. Show the discrepancy on the plan view drawing under (a), above. Show the distances between the corner as previously restored or reestablished and (1) the corner as restored or reestablished, and (2) to at least 4 of the witness monuments shown on the drawing in (a), above.

NO

(E) Was the corner reestablished through lost corner proportionate methods? If so, show the method, including the directions and distances to other public land survey corners used as evidence or used for proportioning the corner location.

I, **Donald Barnes**, hereby certify that the corner location as identified by the corner code index was determined by me under my direction and control and that this U.S. Public Land Survey Monument Record is correct and complete to the best of my knowledge and belief.

SHEET 2 OF 4

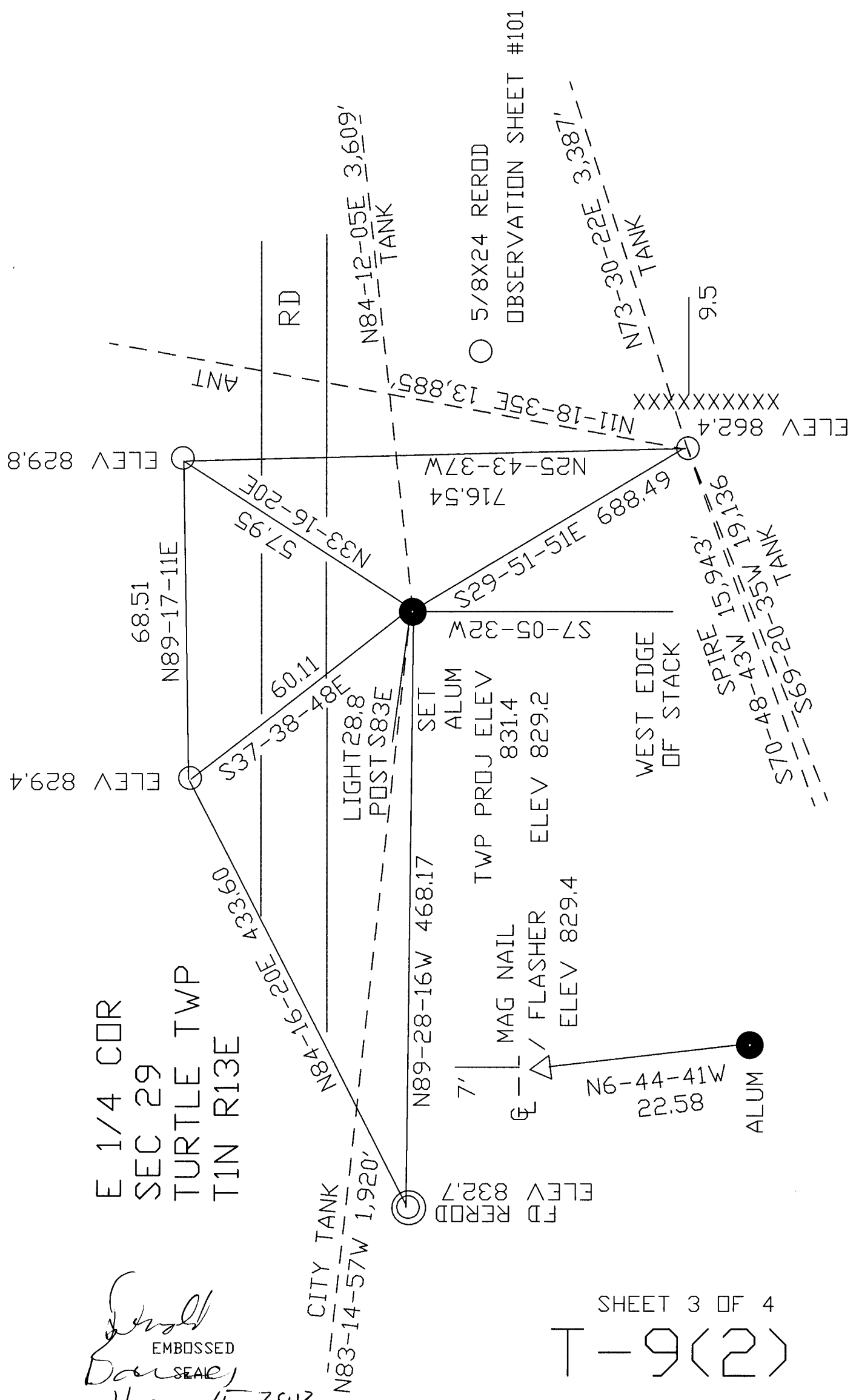
SEAL
 20120515


CORNER CODE T-9(2)

May 15, 2012 A.E. 7.08 REQUIREMENT

E 1/4 COR
 SEC 29
 TURTLE TWP
 T1N R13E

Small
 EMBOSSED
Small
 SEAL
 May 15 2012



E 1/4 COR

1972 LEE #11941 N88-48-04W 826.97

2007 LEUENBERGER #15807 N89-46-42W 559.53
1911 KERCH BK 7 PG 47 5318
2005 HOULE #15246 N89-27-42W 5316.54
1995 BARNES VOL 6 PG 444 N89-27-43W 5316.94
N89-27-43W 5316.94

2007 HOULE #15626 N89-28-16W 468.27
2007 LEUENBERGER #15807 N89-27-42W 468.28
2006 HOULE CSM 31-94 N89-27-42W 468.28
2005 HOULE #15246 N89-27-42W 468.28
2005 HOULE BK32 PG 716 N89-27-43W 468.50
2002 HOULE CSM25-396 N89-27-43W 468.50
2001 HOULE CSM 24-247 N89-27-43W 468.50
1992 LEUENBERGER #5236 N89-27-42W 468.28
1988 COMBS N89-34-05W 467.86

2012 BARNES COUNTY ADJ 88-24-15
2004 HOULE CSM27-257 88-24-15
88-24-11

SEC 29

Ronald Bang
EMBOSSED SEAL

May 15, 2012

SHEET 4 OF 4

1-9(2)

TURTLE TWP

E 1/4 COR

S88-46-42E 1332.57 2005 HOULE #15246
S88-46-04E 1332.55 2004 HOULE CSM27-193
S88-46-44E 1332.55 2003 HOULE CSM26-72
S88-46-44E 1332.55 1999 KREBS #7352
S88-46-42E 1332.57 1992 LEUENBERGER #5236

2003 HOULE CSM 26-27 S88-46-44E 5335.70
2006 HOULE CSM 31-94 S88-46-42E 5335.67
2007 HOULE #15626 S88-46-42E 5335.67
2012 BARNES COUNTY ADJ S88-46-42E 5335.72

E 1/4 COR

2005 HOULE #15246 S0-58-43E 2648.17
2004 HOULE CSM 27-257 S0-58-44E 2648.17
2004 HOULE CSM 25-399 S0-58-40E 2648.15
1999 KREBS #7352 S0-58-44E 2648.15
1992 LEUENBERGER #5236 S0-58-43E 2648.15
1995 BARNES VOL 6 PG 444 S0-58-41E 2648.15
2005 HOULE #15246 S0-58-43E 2648.12
2006 HOULE CSM31-94 S0-58-43E 2648.12
2007 HOULE #15626 S0-58-43E 2648.12
2012 BARNES COUNTY ADJ S0-58-40E 2648.14
S0-58-40E 2648.15

SEC 29

SE COR
SEC 29

1996 KREBS #8893 5327.59

2000 KREBS #7593 S88-56-08E 2661.46