

# U.S. PUBLIC LAND SURVEY MONUMENT RECORD

For Public Land Survey Corners In: WI ADMINISTRATIVE CODE A-E 7.08 REQUIREMENT

T. 1 N. - R. 13 E. of the 4th P.M.

### CORNER CODE INDEX

(PLACE "◆" SYMBOL AT PROPER PLSS CORNER LOCATION)

	2	3	4	5	6	7	8	9	10	11	12	13	14	15	16	17	18	19	20	21	22	23	24	25		
A																										A
B																										B
C																										C
D																										D
E																										E
F																										F
G																										G
H																										H
J																										J
K																										K
L																										L
M																										M
N																										N
O																										O
P																										P
Q																										Q
R																										R
S																										S
T																										T
U																										U
V																										V
W																										W
X																										X
Y																										Y
Z																										Z
	1	2	3	4	5	6	7	8	9	10	11	12	13	14	15	16	17	18	19	20	21	22	23	24	25	

TURTLE TWP  
ROCK COUNTY WI

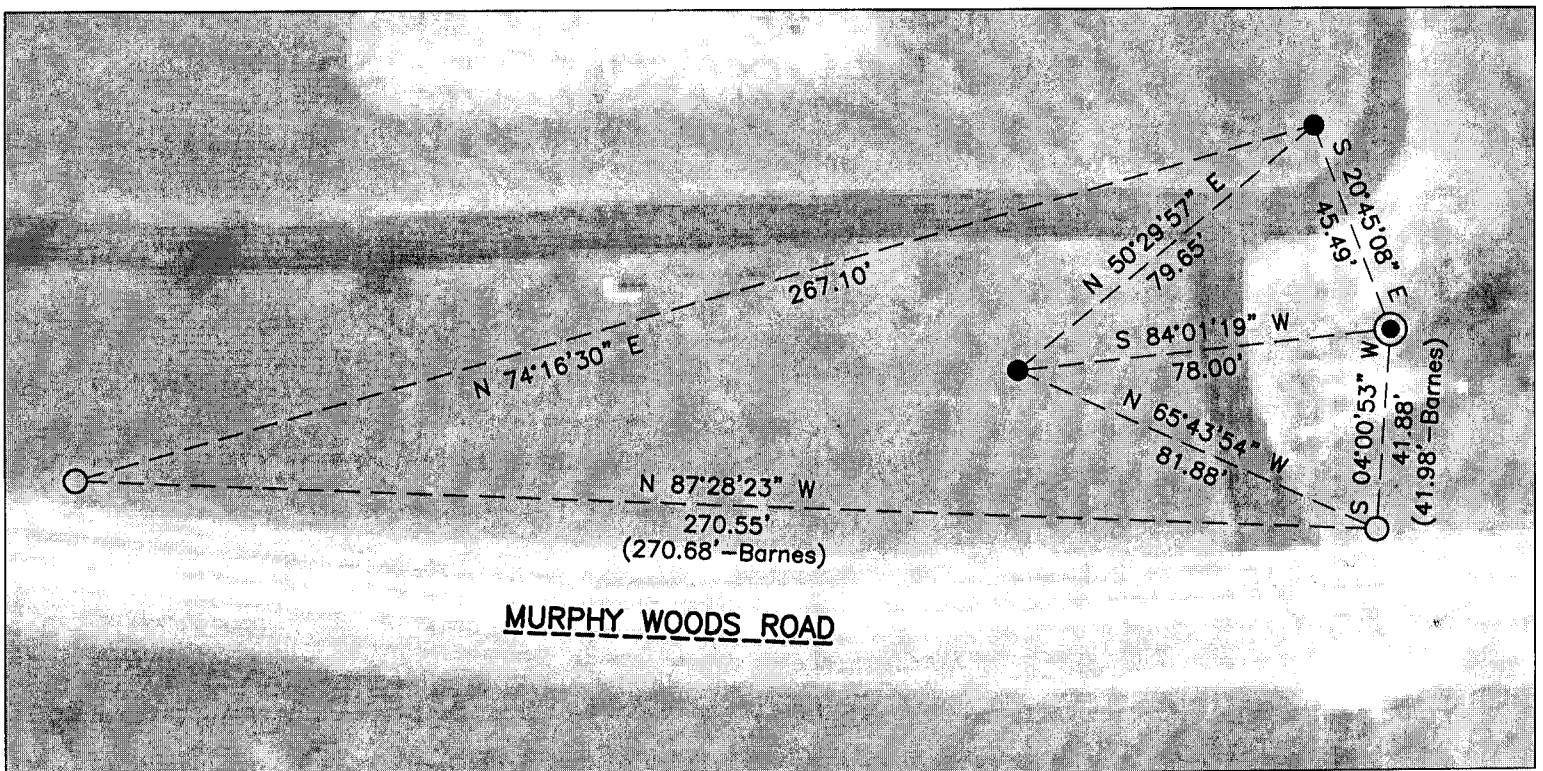
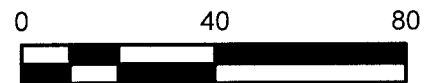
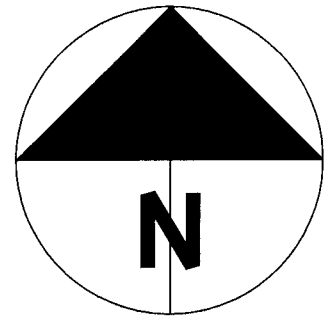
### COORDINATE VALUES

North 216867.79  
East 498756.55

WCCS NAD83 (NA2011)  
Hor. Datum ROCK DATUM  
(GNSS DERIVED VIA WISCORS)

(a) LEGEND

- - 5/8" x 24" REBAR SET, (RED CAP W/"PLSS WITNESS")
- ⊙ - REBAR IN PIPE FOUND
- - CAPPED REBAR FOUND



SHEET 1 OF 2

FIELD BOOK 2013 PAGE # 39

CORNER CODE N-3(3)

***B) Describe any record evidence, monument evidence, occupational evidence, testimonial evidence or any other material evidence you considered, and whether the monument was found or placed.***

Surveys over the past couple of decades have referred to a pipe or a rebar at this location. The monument is in fact an iron pipe with a rebar set inside of it and I surveyed the center of the rebar extending 1/2", +/-, out of the pipe. The pipe is approximately an inch in diameter and rebar 5/8" in diameter, more or less.

***C) Was the corner restored through acceptance of (1) an obliterated evidence location, or, (2) a found perpetuated location?***

Found perpetuated location

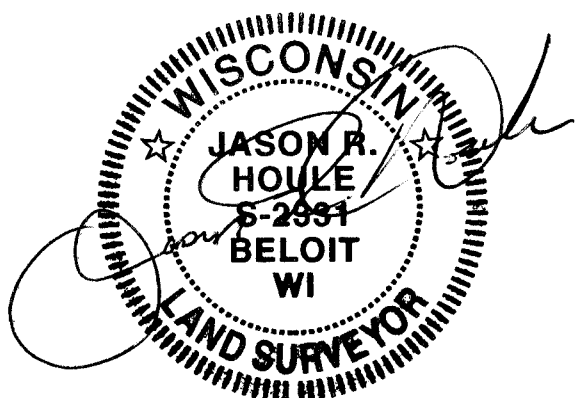
***D) Describe any material discrepancy between the location of the corner as restored or reestablished and the location of that corner as previously restored or reestablished by distance and direction. Show the discrepancy on the plan view drawing under (a), above. Show the distances between the corner as previously restored or reestablished and (1) the corner as restored or reestablished, and (2) to at least 4 of the witness monuments shown on the drawing in (a), above.***

N/A

***(E) Was the corner reestablished through lost corner proportionate methods? If so, show the method, including the directions and distances to other public land survey corners used as evidence or used for proportioning the corner location.***

N/A

*I, Jason R. Houle, hereby certify that the corner location as identified by the corner code index was determined by me under my direction and control and that this U.S. Public Land Survey Monument Record is correct and complete to the best of my knowledge and belief.*



**CORNER CODE: N-3(3)**  
**(A.E. 7.08 REQUIREMENT)**