

Paper weight-110# (minimum)

Black nonfading ink required

# U.S. PUBLIC LAND SURVEY MONUMENT RECORD

For Public Land Survey Corners In:

WI ADMINISTRATIVE CODE A-E 7.08 REQUIREMENT

T. 1 N. R. 13 E. 4th P.M.

REV 10/23/2004

USMONREC.DWG

CORNER CODE INDEX

TURTLE TWP

ROCK COUNTY WI

IF AVAILABLE

ROCK COUNTY COORDINATES PREFERRED

A	1	2	3	4	5	6	7	8	9	10	11	12	13	14	15	16	17	18	19	20	21	22	23	24	25	A	
B		6				5				4					3					2						1	B
C																											C
D																											D
E																											E
F																											F
G																											G
H																											H
I																											I
J																											J
K																											K
L																											L
M																											M
N																											N
O																											O
P																											P
Q																											Q
R																											R
S																											S
T																											T
U																											U
V																											V
W																											W
X																											X
Y																											Y
Z																											Z

North \_\_\_\_\_ Elev. \_\_\_\_\_

East \_\_\_\_\_

Hor. Datum \_\_\_\_\_ Vert. Datum \_\_\_\_\_

LATITUDE \_\_\_\_\_ ELLIPS. HT. \_\_\_\_\_

LONGITUDE \_\_\_\_\_

NAD83(91) \_\_\_\_\_ NETWORK ADJ. YR \_\_\_\_\_

GPS (X) \_\_\_\_\_ TRAVERSE (X) \_\_\_\_\_

BASED ON THE FOLLOWING CONTROL:

PLACE MONUMENT SYMBOL  AT PROPER LOCATION ON ABOVE INDEX

CORNER MONUMENT

WITNESS MONUMENT

(a)

ROCK COUNTY PROJECTION

BEARINGS ARE BASED ON:

FIELD BOOK \_\_\_\_\_ PAGE # \_\_\_\_\_  
OR OBSERVATION SHEET \_\_\_\_\_

SHEET 1 OF 2

SHOW A PLAN VIEW DRAWING DEPICTING THE CORNER MONUMENT AND SURROUNDING PHYSICAL FEATURES, INCLUDING THE EXCAVATION AREA AND DEPTH.

PLANNING & ZONING COMMITTEE ADOPTED THIS FORM ON 12/2/1982

CORNER CODE G-1(1)

(B) Describe any record evidence, monument evidence, occupational evidence, testimonial evidence or any other material evidence you considered, and whether the monument was found or placed.

- 1835 BRINK SET QUARTER SECTION POST IN PRAIRIE IN MOUND PIT EAST OF POST 3.96'.
- 1936 SUNNY VOL 3 PG 296 3/8" IRON PIN. DUG 6X8 HOLE 6' DEEP AND FOUND NOTHING. REFERENCED PIN.
- 1960 BATTERMAN VOL 4 PG 56 STATES NOTHING ABOUT CORNER. REFERENCED CORNER.
- 1995 BARNES G-1 FD MON BOX & TIES AS SHOWN IN VOL 4 PG 56. COUNTY COORDINATES N/S 224,788.66' E/W 496,395.75'
- 2012 BARNES COUNTY READJUSTMENT N/S 224,788.79' E/W 496,395.62'

FD R/R SPIKE @ PVMT SURFACE & ABOUT .7' DEEP FD PIPE INSIDE MON. BOX. ALSO FD R/R INSIDE PIPE, WHICH ISN'T IN THE CENTER OF THE PIPE. PIPE IS @ THE N/S PVMT CENTER. THE DIFFERENCE BETWEEN THE PIPE & THE R/R SPIKE @ THE PVMT SURFACE IS 0.04'

C) Was the corner restored through acceptance of (1) an obliterated evidence location, or, (2) a found perpetuated location?

ACCEPTED FD PIPE IN MON BOX.

D) Describe any material discrepancy between the location of the corner as restored or reestablished and the location of that corner as previously restored or reestablished by distance and direction. Show the discrepancy on the plan view drawing under (a), above. Show the distances between the corner as previously restored or reestablished and (1) the corner as restored or reestablished, and (2) to at least 4 of the witness monuments shown on the drawing in (a), above.

IP TO R/R @ PVMT SURFACE IS N22-48E 0.04'

(E) Was the corner reestablished through lost corner proportionate methods? If so, show the method, including the directions and distances to other public land survey corners used as evidence or used for proportioning the corner location.

I, **Donald Barnes**, hereby certify that the corner location as identified by the corner code index was determined by me under my direction and control and that this U.S. Public Land Survey Monument Record is correct and complete to the best of my knowledge and belief.

*Donald Barnes*  
EMBOSS

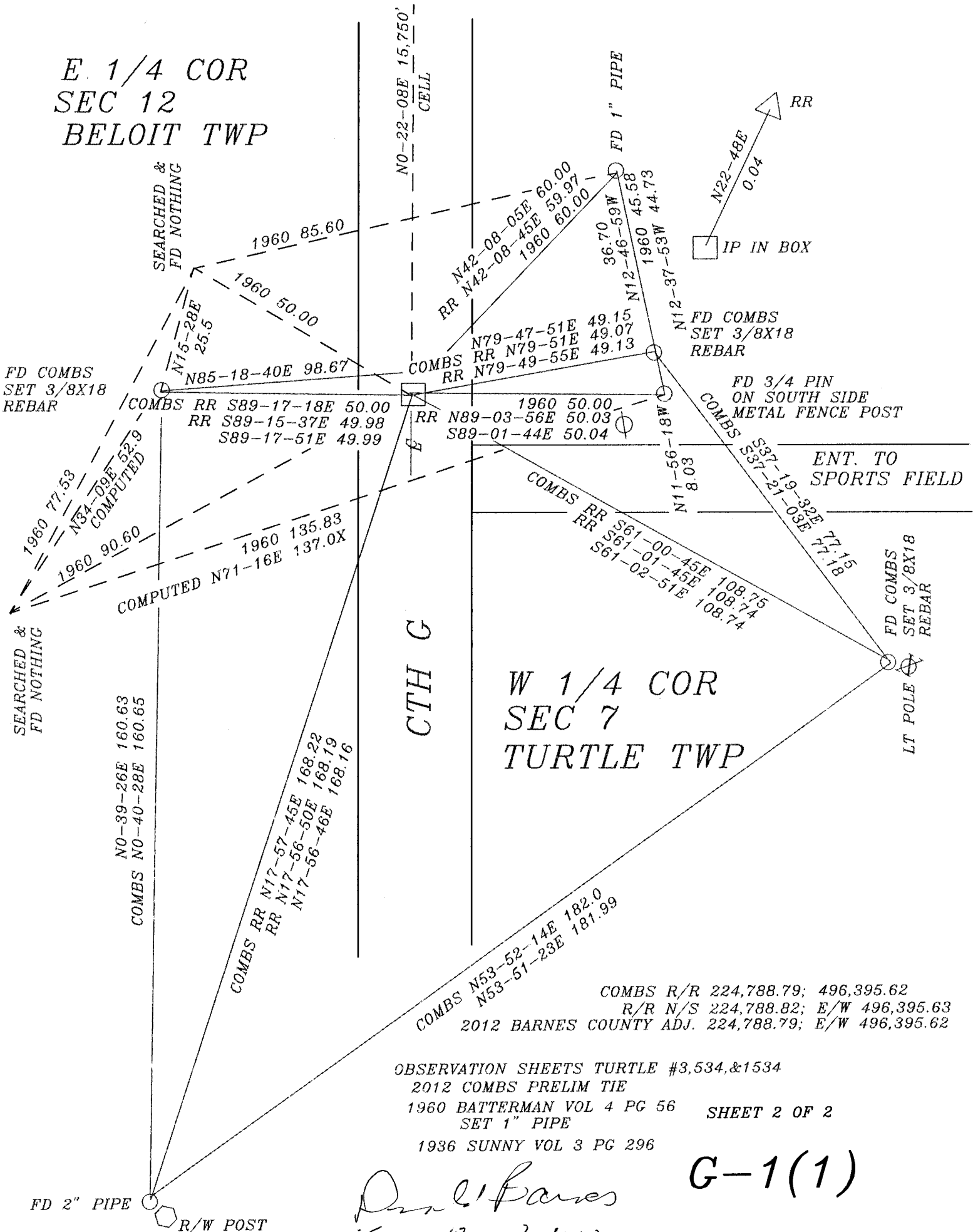
SHEET 1 OF 2

CORNER CODE G-1(1)

A.E. 7.08 REQUIREMENT

*Sep 19, 2012*

E. 1/4 COR  
SEC 12  
BELOIT TWP



CTH G

W 1/4 COR  
SEC 7  
TURTLE TWP

COMBS R/R 224,788.79; 496,395.62  
R/R N/S 224,788.82; E/W 496,395.63  
2012 BARNES COUNTY ADJ. 224,788.79; E/W 496,395.62

OBSERVATION SHEETS TURTLE #3,534,&1534  
2012 COMBS PRELIM TIE  
1960 BATTERMAN VOL 4 PG 56 SET 1" PIPE  
1936 SUNNY VOL 3 PG 296

*Dan Barnes*  
Sep 12 2012

G-1(1)