

# U.S. PUBLIC LAND SURVEY MONUMENT RECORD

For Public Land Survey Corners In:

WI ADMINISTRATIVE CODE A-E 7.08 REQUIREMENT

T. 1 N. R. 13 E. 4th P.M.

REV 10/23/2004

USMONREC.DWG

CORNER CODE INDEX

A	1	2	3	4	5	6	7	8	9	10	11	12	13	14	15	16	17	18	19	20	21	22	23	24	25	A
B			6			5				4				3				2				1				B
C																										C
D																										D
E																										E
F																										F
G																										G
H																										H
J																										J
K																										K
L																										L
M																										M
N																										N
O																										O
P																										P
Q																										Q
R																										R
S																										S
T																										T
U																										U
V																										V
W																										W
X																										X
Y																										Y
Z																										Z

TURTLE TWP  
ROCK COUNTY WI

IF AVAILABLE  
ROCK COUNTY COORDINATES PREFERRED

North \_\_\_\_\_ Elev. \_\_\_\_\_

East \_\_\_\_\_

Hor. Datum \_\_\_\_\_ Vert. Datum \_\_\_\_\_

LATITUDE \_\_\_\_\_ ELLIPS. HT. \_\_\_\_\_

LONGITUDE \_\_\_\_\_

NAD83(91) \_\_\_\_\_ NETWORK ADJ. YR \_\_\_\_\_

GPS (X) \_\_\_\_\_ TRAVERSE (X) \_\_\_\_\_

BASED ON THE FOLLOWING CONTROL:

PLACE MONUMENT SYMBOL  AT PROPER LOCATION ON ABOVE INDEX

CORNER MONUMENT

WITNESS MONUMENT

(a)

BEARINGS ARE BASED ON: \_\_\_\_\_

FIELD BOOK \_\_\_\_\_ PAGE # \_\_\_\_\_

SHEET 1 OF 3

SHOW A PLAN VIEW DRAWING DEPICTING THE CORNER MONUMENT AND SURROUNDING PHYSICAL FEATURES, INCLUDING THE EXCAVATION AREA AND DEPTH.

PLANNING & ZONING COMMITTEE ADOPTED THIS FORM ON 12/2/1982

CORNER CODE A-11 (1)

TU506

(B) Describe any record evidence, monument evidence, occupational evidence, testimonial evidence or any other material evidence you considered, and whether the monument was found or placed.

1939 SUNNY VOL 3 PG 451 DUG A HOLE 4Z4 2' DEEP & FOUND NOTHING. CENTER OF HOLE IS 146.5' WEST OF S 1/4 COR SEC 31 & ON LINE WITH N/S CENTER OPF PVMT.

1964 BATTERMAN VOL 4 PG 203. STATES NOTHING ABOUT CORNERS. REFERENCED SAME.

1974 BATTERMAN VOL 4 PG 203 SET ALUM MON.

1985 BARNES Z-11 [LA PRAIRIE] FB#2 PG 26,27 & 45 FD ALUM MON & REFERENCE PIPES. REFERENCED SAME.

1995 BARNES FB #3 PG 61 FD ALUM. MON.

RECOVERED ALUM. MON. PRIOR TO GRINDING & REFERENCED SAME. MONUMENT WAS IN THE LATER STAGES OF DISOLVING. ACCEPTED FD ALUM. MON. AFTER REPAVING I SET A DURA-NAIL IN THE PVMT SURFACE.

C) Was the corner restored through acceptance of (1) an obliterated evidence location, or, (2) a found perpetuated location?

MONUMENT IS IN HARMONY WITH REFERENCE MONUMENTS.

D) Describe any material discrepancy between the location of the corner as restored or reestablished and the location of that corner as previously restored or reestablished by distance and direction. Show the discrepancy on the plan view drawing under (a), above. Show the distances between the corner as previously restored or reestablished and (1) the corner as restored or reestablished, and (2) to at least 4 of the witness monuments shown on the drawing in (a), above.

NONE

(E) Was the corner reestablished through lost corner proportionate methods? If so, show the method, including the directions and distances to other public land survey corners used as evidence or used for proportioning the corner location.

I, **Donald Barnes**, hereby certify that the corner location as identified by the corner code index was determined by me under my direction and control and that this U.S. Public Land Survey Monument Record is correct and complete to the best of my knowledge and belief.

Seal

Emboss  
*Donald Barnes*  
OCT 3 2006

SHEET 1 OF 3

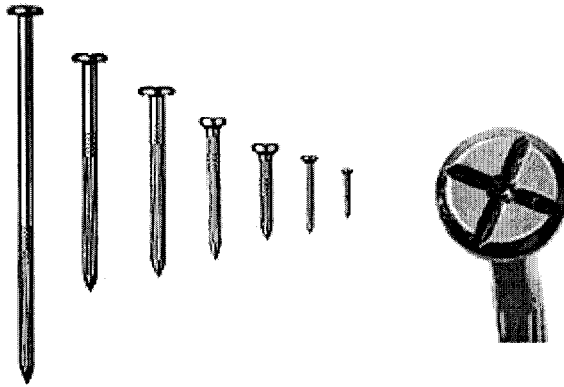
CORNER CODE

**A-11(1)**

A.E. 7.08 REQUIREMENT

# DuraNail

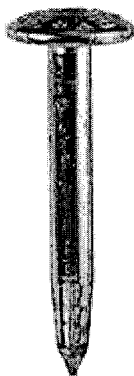
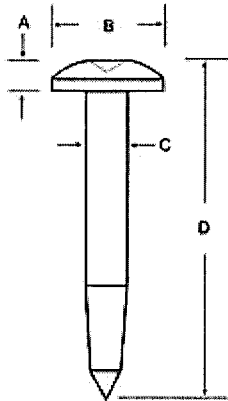
Exclusively From Berntsen



## DuraNail

This steel nail will not bend or break and will drive into the asphalt with ease. Not like other nails, it has a deep cross on its larger head along with a center punch. This magnetic nail comes in a variety of lengths. You will receive The Magnetizer with each bag of nails, which will realign the magnetic field after installation to make your DuraNail more detectable

## Steel Nail Markers



A = 3/16" (5 mm)  
B = 1" (25 mm)  
C = 11/32" (9 mm)  
D = 3" (76 mm)

The Steel Nail Marker is super strong solid steel and drives easily into blacktop. "SURVEY MARK" is imprinted on top of nail for easy identification as a survey mark. The SNM1 has a 1" (25mm) convex top and conical recessed center chamfer for pinpoint accuracy.

2 OF 3

Donald Rauses  
OCT 3 2006

A 71(1)

ELEV 839.0  
 1990 FD PIPE  
 1985 RESET PIPE  
 1964 SET PIPE

N 1/4 COR  
 SEC 4

LA PRAIRIE  
 T2N R13E

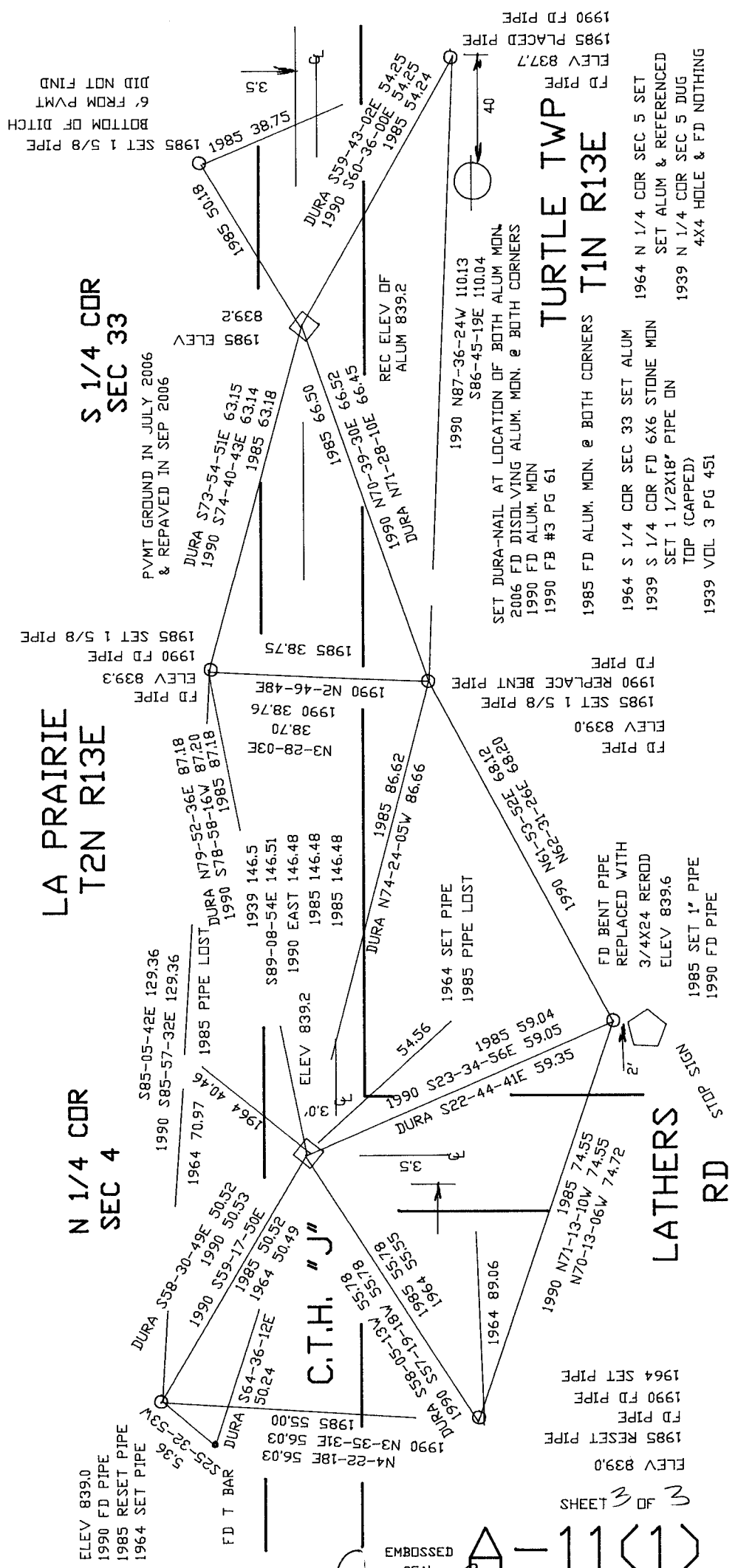
S 1/4 COR  
 SEC 33

SHEETS 3 OF 3

EMBOSSED SEAL

A-11(1)

*Ronald Barnes*  
 OCT 3 2006



BOTTOM OF DITCH  
 SET 1 5/8 PIPE  
 6' FROM PVMT  
 DID NOT FIND

PVMT GROUND IN JULY 2006  
 & REPAVED IN SEP 2006

SET DURA-NAIL AT LOCATION OF BOTH ALUM MON.  
 2006 FD DISSOLVING ALUM. MON. @ BOTH CORNERS  
 1990 FD ALUM. MON  
 1990 FB #3 PG 61

1985 FD ALUM. MON. @ BOTH CORNERS  
 1964 S 1/4 COR SEC 33 SET ALUM  
 1939 S 1/4 COR FD 6X6 STONE MON  
 SET 1 1/2X18" PIPE ON  
 TOP (CAPPED)  
 1939 VOL 3 PG 451

1985 FD ALUM. MON. @ BOTH CORNERS  
 1964 N 1/4 COR SEC 5 SET  
 SET ALUM & REFERENCED  
 1939 N 1/4 COR SEC 5 DUG  
 4X4 HOLE & FD NOTHING

FD BENT PIPE  
 REPLACED WITH  
 3/4X24 REROD  
 ELEV 839.6  
 1985 SET 1" PIPE  
 1990 FD PIPE

FD PIPE  
 1990 REPLACE BENT PIPE  
 1985 SET 1 5/8 PIPE  
 ELEV 839.0

1964 SET PIPE  
 1985 PIPE LOST

1990 S23-34-56E 59.04  
 1985 59.05  
 1990 S22-44-41E 59.35

DURA S58-05-13W 55.78  
 1990 N3-35-31E 56.03  
 1985 55.00  
 1964 89.06

N4-22-18E 56.03  
 1990 N3-35-31E 56.03  
 1985 55.00

DURA S25-32-53W 55.36  
 1990 N3-35-31E 56.03  
 1985 55.00

DURA S58-30-49E 50.52  
 1990 S59-17-50E  
 1985 50.52  
 1964 50.49

S85-05-42E 129.36  
 1990 S85-57-32E 129.36

DURA N79-52-36E 87.18  
 1990 S78-58-16W 87.20  
 1985 87.18

FD PIPE  
 1990 FD PIPE  
 ELEV 839.3  
 1985 SET 1 5/8 PIPE

DURA S73-54-51E 63.15  
 1990 S74-40-43E 63.14  
 1985 63.18

1985 ELEV  
 839.2

DURA S59-43-02E 54.25  
 1990 S60-36-00E 54.25  
 1985 54.24

1990 FD PIPE  
 1985 PLACED PIPE  
 ELEV 837.7