

# U.S. PUBLIC LAND SURVEY MONUMENT RECORD

For Public Land Survey Corners in:

WI ADMINISTRATIVE CODE A-E 7.08 REQUIREMENT

T. 1 N., R. 12 E

### CORNER CODE INDEX

A	2	3	4	5	6	7	8	9	10	11	12	13	14	15	16	17	18	19	20	21	22	23	24	25
B	6																							
C	5																							
D																								
E																								
F	1																							
G		8																						
H			9																					
I				10																				
J					11																			
K						12																		
L	18																							
M		11																						
N			16																					
O				15																				
P					14																			
Q						13																		
R							17																	
S								18																
T									19															
U										20														
V											21													
W												22												
X													23											
Y														24										
Z															25									

BELOIT TWP  
ROCK COUNTY WI

IF AVAILABLE  
ROCK COUNTY COORDINATES PREFERRED

North 217,116.97 Elev. \_\_\_\_\_

East 475,022.70

Hor. Datum NAD83(1) Vert. Datum \_\_\_\_\_

LATITUDE \_\_\_\_\_ ELLIPS. HT. \_\_\_\_\_

LONGITUDE \_\_\_\_\_

GPS (X) \_\_\_\_\_ TRAVERSE (X) \_\_\_\_\_

BASED ON THE FOLLOWING CONTROL:

AUG 25, 2003 ADJUSTMENT OF COMBINED TOWNSHIPS

PLACE MONUMENT SYMBOL  AT PROPER LOCATION ON ABOVE INDEX

CORNER MONUMENT

WITNESS MONUMENT

(a)

BEARINGS ARE BASED ON:

FIELD BOOK \_\_\_\_\_ PAGE # \_\_\_\_\_

SHEET 1 OF 3

SHOW A PLAN VIEW DRAWING DEPICTING THE CORNER MONUMENT AND SURROUNDING PHYSICAL FEATURES, INCLUDING THE EXCAVATION AREA AND DEPTH.

PLANNING & ZONING COMMITTEE ADOPTED THE ABOVE FORM ON 12/2/1982

CORNER CODE N-9(1)

BE565

(B) Describe any record evidence, monument evidence, occupational evidence, testimonial evidence or any other material evidence you considered, and whether the monument was found or placed.

1834 HARRISON           **NORTH BETWEEN SECS 20 & 21**  
343.2       BURR OAK 18  
1320       LEFT TIMBER & ENTER PRAIRIE  
1980       ENTER CREEK BOTTOM  
2640       QUARTER SEC COR.    SET POST & RAISED MOUND  
3168       BROOK 5.28' CRS S.W.  
3300       LEFT BOTTOM BEARING S.W.  
5280       COR TO SECS 16,17,20,21 ON GROUND DESCENDING E. SET  
          POST & RAISED MOUND.  
          **NORTH BET SECS 16 & 17**  
1274.46    TRAIL TO TURTLE VILLAGE  
2640       QUARTER SEC COR IN A RAVEN RUNNING E.    SET POST & RAISED  
          MOUND  
5280       COR TO SECS 8, 9,16,17 NEAR HEAD OF DRAUGHT LEADING S.  
          SET POST & RAISED MOUND.  
          **EAST ON RAND BET. SECS 16 & 21**  
660        ENTER BOTTOM  
1254       BROOK CRS S (NEAR THE HEAD)  
1782       TO A TRAIL LEADING TO TURTLE VILLAGE  
2112       LEFT BOTTOM CRS S.W.  
2640       TEMPY 1/4 SEC COR  
5258.88    INT. E BOUNDARY 66' SOUTH OF POST  
          **COR WEST**  
2629.44    QUARTER SEC COR    SET POST & RAISED MOUND ON GROUND  
          DESCENDING S.W.  
5258.88    SEC COR.  
          **EAST ON RAND BET 17 & 20**  
2640       TEMPY 1/4 SEC COR  
5288.58    INT. E BOUNDARY 35.64' NORTH OF POST.  
          **COR. WEST BET 17 & 20**  
2644.29    QUARTER SEC COR. IN SUMMIT OF RIDGE N & S.    POST &  
          RAISED MOUND  
5288.58    SEC COR.  
1856 TOWN ROAD RECORDS BK 1 PG 287 DESCRIPTION BEGINS AT CORNER.  
1952 BATTERMAN SUBDIVISION PLAT BK 16 PG 4A FOUND IRON PIN  
1955 BATTERMAN SUBDIVISION PLAT BK 17 PG 9 FOUND IRON PIN  
1957 BATTERMAN SUBDIVISION PLAT BK 19 PG 6 FOUND PIN 2657.89 TO N 1/4  
COR SEC 20  
1963 BATTERMAN VOL 4 PG 183 REFERENCED COR.    TIES ARE REFERENCED TO  
TRUE NORTH.  
1963 CTH "Q" PROJECT 51429(1) SHEET 4.1 FOUND 3/4" PIN IN MONUMENT BOX.  
1970 LEE CSM V 1 PG 302 SET CONCRETE MONUMENT(?)  
1971 LEE CSM V2 PG 109 FOUND MONUMENT BUT STATES NOTHING ABOUT IT.  
1983 STH 213 PROJECT #5571-01-21 SHEET 4.5 FOUND IRON PIN N/S  
198,218.46;E/W 2,245,109.04  
1998 BARNES N-9 FOUND 1" PIPE IN MONUMENT BOX.  
  
FD 1" PIPE IN MON. BOX. PAVEMENT GROUND.    CTH Q WILL BE REPAVED.

*Donald Barnes*  
Aug 26, 2003

SHEET 1 OF 3 CORNER CODE N-9(1)

BE565

C) Was the corner restored through acceptance of (1) an obliterated evidence location, or, (2) a found perpetuated location?

ACCEPTED FOUND MONUMENT & FD REF. MON.

D) Describe any material discrepancy between the location of the corner as restored or reestablished and the location of that corner as previously restored or reestablished by distance and direction. Show the discrepancy on the plan view drawing under (a), above. Show the distances between the corner as previously restored or reestablished and (1) the corner as restored or reestablished, and (2) to at least 4 of the witness monuments shown on the drawing in (a), above.

NONE

(E) Was the corner reestablished through lost corner proportionate methods? If so, show the method, including the directions and distances to other public land survey corners used as evidence or used for proportioning the corner location.

NO

I, **Donald Barnes**, hereby certify that the corner location as identified by the corner code index was determined by me under my direction and control and that this U.S. Public Land Survey Monument Record is correct and complete to the best of my knowledge and belief.

Seal  
Donald Barnes  
Aug 26, 2003  
Emboss

SHEET 2 OF 3

CORNER CODE **N-9(1)**

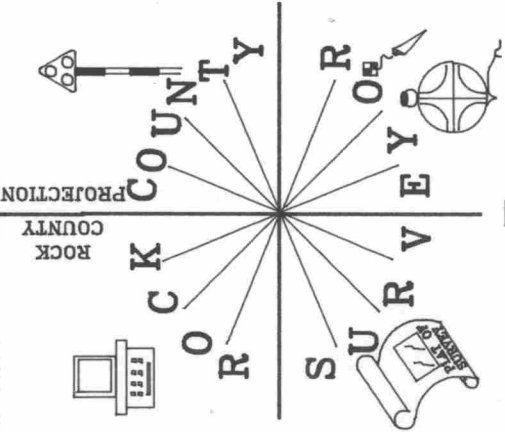
A.E. 7.08 REQUIREMENT

OBSERVATION SHEET 565B  
 OBSERVATION SHEET #1565  
 VOL 4 PG 183

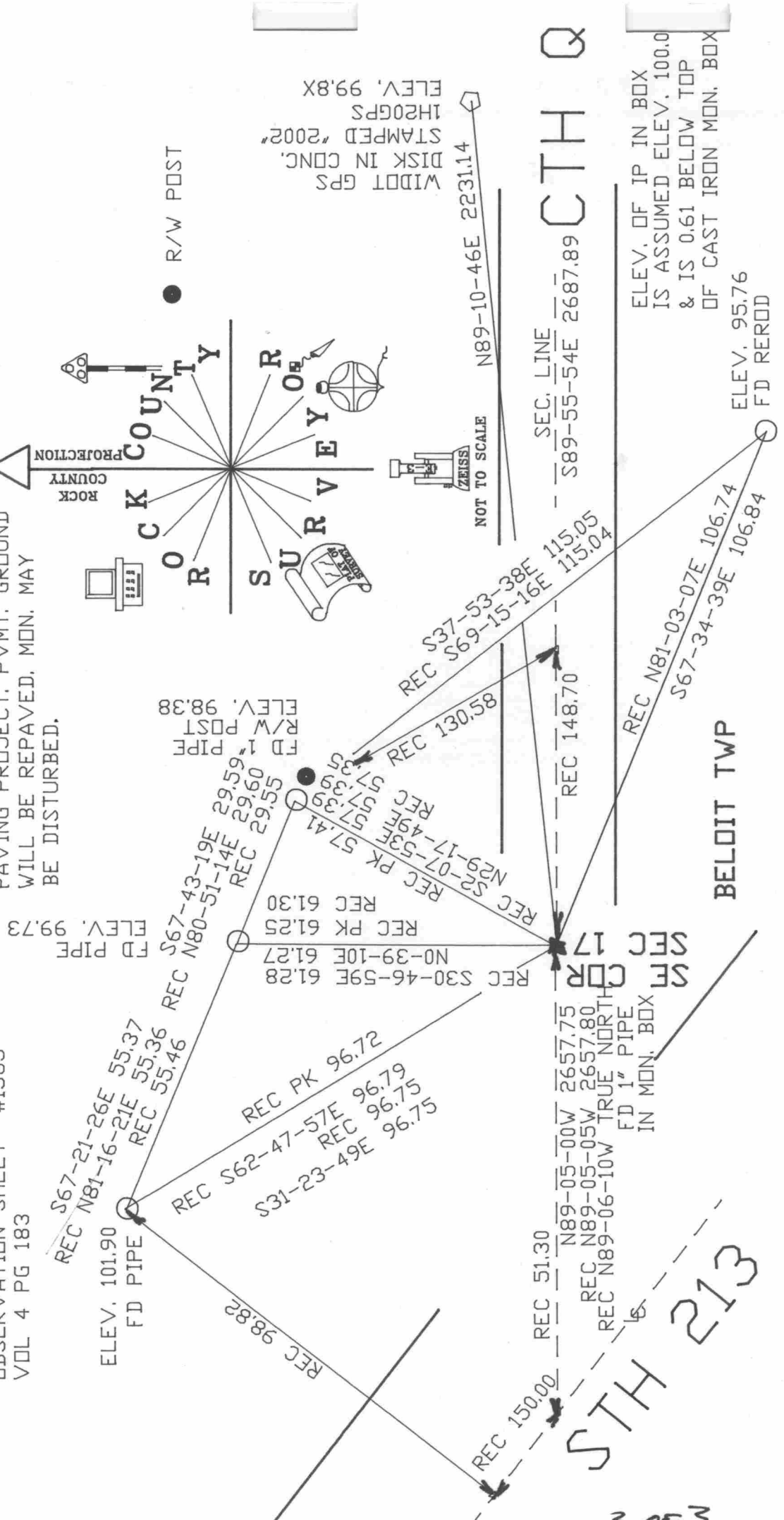
PAVING PROJECT, PVMT. GROUND  
 WILL BE REPAVED, MON. MAY  
 BE DISTURBED.

*Donald Barnes*  
 EMBOSSED SEAL  
 Aug 25 2003

**A**



WIDDT GPS  
 DISK IN CONC.  
 STAMPED '2002'  
 1H20GPS  
 ELEV. 99.8X



ELEV. OF IP IN BOX  
 IS ASSUMED ELEV. 100.0  
 & IS 0.61 BELOW TOP  
 OF CAST IRON MON. BOX

BELOIT TWP

3 OF 3

N-9(1)