

# U.S. PUBLIC LAND SURVEY MONUMENT RECORD

For Public Land Survey Corners In:

WI ADMINISTRATIVE CODE A-E 7.08 REQUIREMENT

T. / N. R. 12 E. 4th P.M.

REV 10/23/2004

USMONREC.DWG

### CORNER CODE INDEX

BELoit TWP  
ROCK COUNTY WI

IF AVAILABLE  
ROCK COUNTY COORDINATES PREFERRED

1	2	3	4	5	6	7	8	9	10	11	12	13	14	15	16	17	18	19	20	21	22	23	24	25	
A						6					5						4								3
B																									2
C																									1
D																									
E																									
F						7					8						9								10
G																									11
H																									12
J																									
K						18					17						16								15
L																									14
M																									13
N																									
O						19					20						21								22
P																									23
Q																									24
R																									
S						30					29						28								27
T																									26
U																									25
V																									
W						31					32						33								34
X																									35
Y																									36
Z																									

North \_\_\_\_\_ Elev. \_\_\_\_\_  
 East \_\_\_\_\_  
 Hor. Datum \_\_\_\_\_ Vert. Datum \_\_\_\_\_  
 LATITUDE \_\_\_\_\_ ELLIPS. HT. \_\_\_\_\_  
 LONGITUDE \_\_\_\_\_  
 NAD83(91) \_\_\_\_\_ NETWORK ADJ. YR \_\_\_\_\_  
 GPS (X) \_\_\_\_\_ TRAVERSE (X) \_\_\_\_\_  
 BASED ON THE FOLLOWING CONTROL:

PLACE MONUMENT SYMBOL  AT PROPER LOCATION ON ABOVE INDEX

CORNER MONUMENT

WITNESS MONUMENT

(a) BEARINGS ARE BASED ON: -----

FIELD BOOK \_\_\_\_\_ PAGE # \_\_\_\_\_

SHEET 1 OF 3

SHOW A PLAN VIEW DRAWING DEPICTING THE CORNER MONUMENT AND SURROUNDING PHYSICAL FEATURES, INCLUDING THE EXCAVATION AREA AND DEPTH.

PLANNING & ZONING COMMITTEE ADOPTED THIS FORM ON 12/2/1982

CORNER CODE A-7(1)

BE504

(B) Describe any record evidence, monument evidence, occupational evidence, testimonial evidence or any other material evidence you considered, and whether the monument was found or placed.

1833 MULLETT & BRINK SOUTH BOUNDARY T2N R12E VAR 7-25  
EAST ON SOUTH SIDE SEC 32

2640 SET QUARTER SECTION POST & MADE MOUND  
5280 SET POST CORNER SECTIONS 32 & 33 IN MARSH &  
MADE MOUND LAND LEVEL WET MARSH FLAG?  
BUSHES WILLOW GRASS

1834 HARRISON INTERIOR OF BELDIT TWP. DID NOT ESTABLISH  
THE N 1/4 COR SEC 5.

1981 BARNES 6-144 2683.89 TO NE COR SEC 5, 2683.89 TO NW  
COR SEC 5, & 173.00 TO S 1/4 COR SEC 32 ROCK TWP

1981 BARNES 6-167 FB #1 PG 19 & 24 DUG & FD NOTHING. SET CI  
MON ON LINE WITH S 1/4 COR SEC 32 & SW COR SEC 32  
MIDWAY BETWEEN THE NW & NE CORNERS OF SEC 5

1990 BARNES A-7 FB #2 PG 6 FOUND CI MON & REFERENCED SAME.  
233,301.65'; 472,443.68' FD PLASTIC CAPS WERE BURNED.

1993 KREBS #10019 FD CI MON. 2681.14 TO ALUM MON @ NW  
COR SEC 5. SET PIN @ EAST EDGE PVMT & 1307.57 FROM NW  
COR SEC 5.

1993 KREBS #09813 FD CI MON. 2681.14 TO ALUM MON @ NW  
COR SEC 5. FD PIN @ EAST EDGE PVMT & 1307.57 FROM NW  
COR SEC 5.

1996 KREBS CSM VOL 20 PG 27 FD CI. SB9-22-47W 2681.12 TO  
NW COR SEC 5 & S1-24-13E 2850.53 FROM NW COR SEC 5 TO  
W 1/4 COR SEC 5.

FD C.I. AND CARSONITE. FD REFERENCE RERODS 4-7" ABOVE  
GRADE. PUSHED RERODS TO GRADE. PLASTIC CAPS WERE BURNED

SB9-46-08E 2686.70 TO NE COR SEC 5  
NB9-37-00W 2681.35 TO NW COR SEC 5  
NB9-57-38E 175.37 TO S 1/4 COR SEC 32.

FD PIN @ N 1/16<sup>TH</sup> OF NW 1/4 SEC 5 ON EAST PVMT EDGE  
SB9-37-01E 1340.39 TO N 1/4 COR SEC 5  
NB9-36-59W 1340.96 TO NW COR SEC 5.

ROCK TWP

SW COR OF SEC 32 TO S 1/4 COR SEC 32 SB9-35-53E 2651.98  
S 1/4 COR SEC 32 TO SE COR SEC 32 SB9-45-20E 2669.73

COORDINATES OF APRIL 5, 2006 ADJUSTMENT ARE 233,300.678  
N/S; 472,441.058 E/W

THE R.H. BATTERMAN CO. REPORTED IN FIRST PART OF APRIL 2006  
GPS COUNTY COORDINATES OF 233,300.655; 472,441.065. THEY  
FOUND CI. MON & PLACED CARSONITE BY SAME.

C) Was the corner restored through acceptance of (1) an obliterated evidence location, or, (2) a found  
perpetuated location?

ACCEPTED FD CI MON. SINCE THE LISTED THREE SURVEYS WERE  
BASED ON THE CI. I DID NOT DISRUPT THEM BY RELOCATING THE  
CORNER TO THE INTENDED POSITION AS STATED IN D).

SHEET 1 OF 3

CORNER CODE **A-7(1)**

*Donald Barnes*  
4-5-2006

**BE504**

*D) Describe any material discrepancy between the location of the corner as restored or reestablished and the location of that corner as previously restored or reestablished by distance and direction. Show the discrepancy on the plan view drawing under (a), above. Show the distances between the corner as previously restored or reestablished and (1) the corner as restored or reestablished, and (2) to at least 4 of the witness monuments shown on the drawing in (a), above.*

THE R.H. BATTERMAN CO. REPORTED A MAJOR DIFFERENCE IN THEIR GPS COORDINATES FROM MY WEBSITE ADJUSTED COORDINATES. I RETURNED TO THE CORNER AND REMEASURED TO MY OLD STATION 3510R, A FD R/R SPIKE, 4538R, FD PK, THE PIPE IN THE MON BOX AT THE E 1/4 COR SEC 5, CI MON AT N 1/4 COR SEC 5, THE CI @ S 1/4 COR SEC 32 ROCK TWP., & REFERENCE MONUMENTS.

BY REVIEWING FB#1 PG 24, I DETERMINED THAT I MADE COMPUTATIONAL BLUNDER IN PLACING THE CI MON AT THE N 1/4 COR SEC 5. THE COORDINATES OF THE S 1/4 COR SEC 32 CHECKED. THE POSITION OF THE CI @ THE N 1/4 COR SEC 5 CI IS 1.15' SOUTH OF THE STATED POSITION & 2.42' WEST OF THE STATED POSITION.

*(E) Was the corner reestablished through lost corner proportionate methods? If so, show the method, including the directions and distances to other public land survey corners used as evidence or used for proportioning the corner location.*

I, **Donald Barnes**, hereby certify that the corner location as identified by the corner code index was determined by me under my direction and control and that this U.S. Public Land Survey Monument Record is correct and complete to the best of my knowledge and belief.

Seal

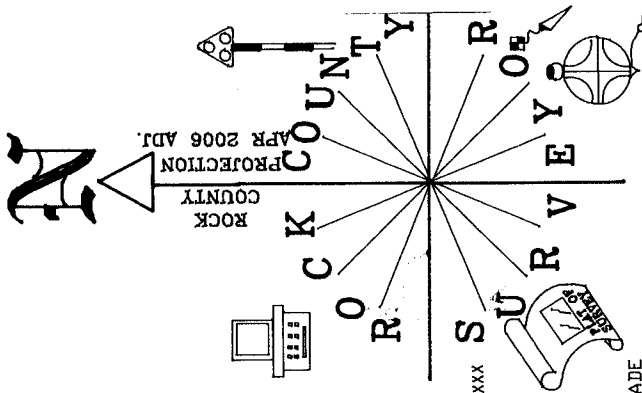
SHEET 2 OF 3

Emboss

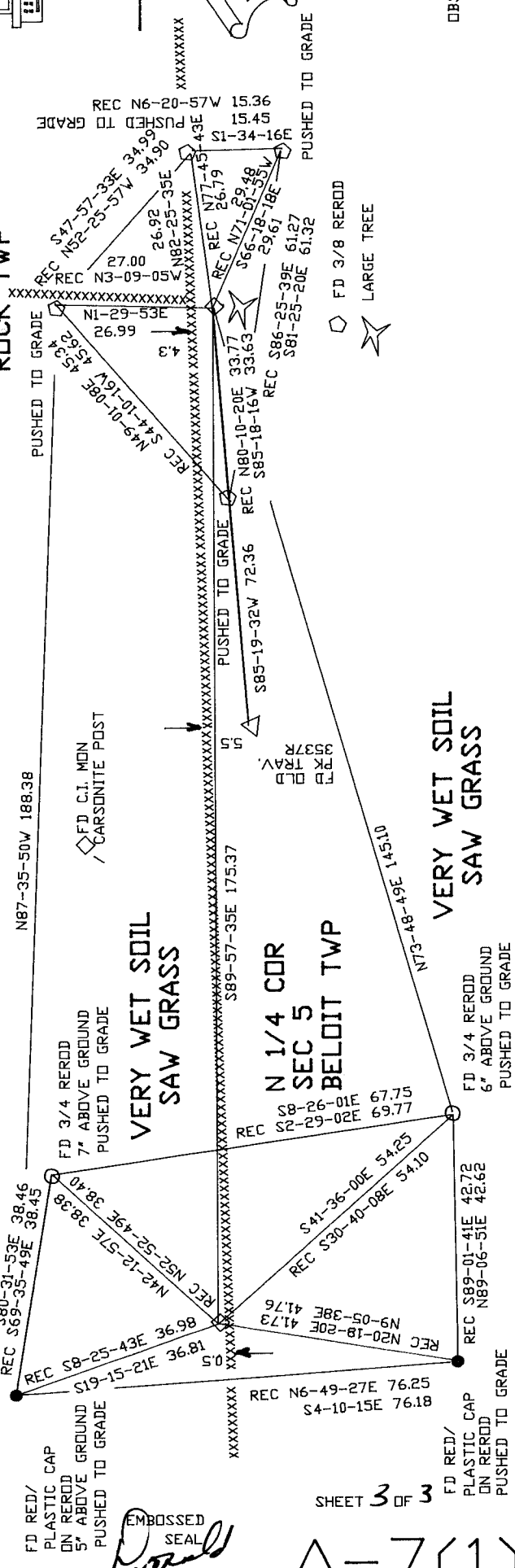
CORNER CODE **A-7(1)**

*Donald Barnes*  
*4-5-2006*

A.E. 7.08 REQUIREMENT



S 1/4 CDR  
SEC 32  
ROCK TWP



SHEET 3 OF 3

EMBOSSED SEAL  
*Dorrell Brines*  
APRIL 5 2006

A-7(1)

OBSERVATION SHEETS 624R & 9003R