

U.S. PUBLIC LAND SURVEY MONUMENT RECORD

For Public Land Survey Corners In:
T. 1 N. R. 13 E. 4th P.M.
CORNER CODE INDEX

WI ADMINISTRATIVE CODE A-E 7.08 REQUIREMENT
REV 10/23/2004 USMONREC.DWG

TURTLE TWP

ROCK COUNTY WI

IF AVAILABLE
ROCK COUNTY COORDINATES PREFERRED

A	1	2	3	4	5	6	7	8	9	10	11	12	13	14	15	16	17	18	19	20	21	22	23	24	25	A
B			6				5					4				3				2				1		B
C																										C
D																										D
E																										E
F																										F
G																										G
H																										H
J																										J
K																										K
L																										L
M																										M
N																										N
O																										O
P																										P
Q																										Q
R																										R
S																										S
T																										T
U																										U
V																										V
W																										W
X																										X
Y																										Y
Z																										Z

North _____ Elev. _____

East _____

Hor. Datum _____ Vert. Datum _____

LATITUDE _____ ELLIPS. HT. _____

LONGITUDE _____

NAD83(91) _____ NETWORK ADJ. YR _____

GPS (X) _____ TRAVERSE (X) _____

BASED ON THE FOLLOWING CONTROL:

PLACE MONUMENT SYMBOL AT PROPER LOCATION ON ABOVE INDEX

CORNER MONUMENT

WITNESS MONUMENT

(a)

BEARINGS ARE BASED ON: _____

FIELD BOOK _____ PAGE # _____

SHEET 1 OF 3

SHOW A PLAN VIEW DRAWING DEPICTING THE CORNER MONUMENT AND SURROUNDING PHYSICAL FEATURES, INCLUDING THE EXCAVATION AREA AND DEPTH.

PLANNING & ZONING COMMITTEE ADOPTED THIS FORM ON 12/2/1982

CORNER CODE A-13(1)

TU507

(B) Describe any record evidence, monument evidence, occupational evidence, testimonial evidence or any other material evidence you considered, and whether the monument was found or placed.

1836 LYON INTERSECTED NORTH BOUNDARY 138.6' WEST OF POST & SET POST & MADE MOUND OF EARTH & SOD.

1861 RUGER VOL 1 PG 152 SET LIMESTONE 24X15X4 138.6' WEST OF SE COR SEC 33. 2667.06 TO N 1/4 COR SEC 3

1939 SUNNY VOL 3 PG 451 FOUND 5X16X17 LIMESTONE. SET 1 1/2 X11 CAPPED PIPE ON TOP & REFERENCED SAME. CALLS FOR 138.6X TO SE COR SEC 33

1964 BATTERMAN VOL 4 PG 203 SET C.I. & REFERENCED SAME. 138.65 WEST OF SE COR SEC 33

1985 BARNES Z-15 FOUND ALUM. MON. 138.56 WEST OF SE COR SEC 33 & REFERENCED SAME. FB#2 PG 26,27, & 45. FD ALUM. MON 0.1' UNDER PVMT SURFACE. MON. 2.0' SOUTH OF NORTH PVMT EDGE.

1995 BARNES A-13 & FB#3 PG 61.FD ALUM. MON. S88-30-26E 2672.76 TO N 1/4 COR SEC 3.

RECOVERED ALUM. MON. PRIOR TO GRINDING & REFERENCED SAME. MONUMENT WAS IN THE LATER STAGES OF DISOLVING. ACCEPTED FD ALUM. MON. AFTER REPAVING I SET A DURA-NAIL IN THE PVMT SURFACE.

C) Was the corner restored through acceptance of (1) an obliterated evidence location, or, (2) a found perpetuated location?

MONUMENT IS IN HARMONY WITH REFERENCE MONUMENTS.

D) Describe any material discrepancy between the location of the corner as restored or reestablished and the location of that corner as previously restored or reestablished by distance and direction. Show the discrepancy on the plan view drawing under (a), above. Show the distances between the corner as previously restored or reestablished and (1) the corner as restored or reestablished, and (2) to at least 4 of the witness monuments shown on the drawing in (a), above.

(E) Was the corner reestablished through lost corner proportionate methods? If so, show the method, including the directions and distances to other public land survey corners used as evidence or used for proportioning the corner location.

I, **Donald Barnes**, hereby certify that the corner location as identified by the corner code index was determined by me under my direction and control and that this U.S. Public Land Survey Monument Record is correct and complete to the best of my knowledge and belief.

Seal

SHEET 1 OF 3

Emboss

Donald Barnes
DIT 3 2006

CORNER CODE

A-13(1)

A.E. 7.08 REQUIREMENT

U.S. PUBLIC LAND SURVEY MONUMENT RECORD

For Public Land Survey Corners In:
T. 1 N. R. 13 E. 4th P.M.
CORNER CODE INDEX

WI ADMINISTRATIVE CODE A-E 7.08 REQUIREMENT
REV 10/23/2004 USMONREC.DWG

A	1	2	3	4	5	6	7	8	9	10	11	12	13	14	15	16	17	18	19	20	21	22	23	24	25	A
B																										B
C	6																									C
D		5																								D
E			4																							E
F				3																						F
G					2																					G
H						1																				H
I																										I
J																										J
K																										K
L																										L
M																										M
N																										N
O																										O
P																										P
Q																										Q
R																										R
S																										S
T																										T
U																										U
V																										V
W																										W
X																										X
Y																										Y
Z																										Z

TURTLE TWP
ROCK COUNTY WI

IF AVAILABLE
ROCK COUNTY COORDINATES PREFERRED

North _____ Elev. _____

East _____

Hor. Datum _____ Vert. Datum _____

LATITUDE _____ ELLIPS. HT. _____

LONGITUDE _____

NAD83(91) _____ NETWORK ADJ. YR _____

GPS (X) _____ TRAVERSE (X) _____

BASED ON THE FOLLOWING CONTROL:

PLACE MONUMENT SYMBOL AT PROPER LOCATION ON ABOVE INDEX

CORNER MONUMENT WITNESS MONUMENT

BEARINGS ARE BASED ON:

IN JULY 2006 CTH "J"s ASPHALT SURFACE WAS REMOVED BY A GRINDING PROCESS. IN SEPTEMBER 2006 IT WAS RESURFACED WITH ASPHALT. FROM THE TIES I PLACED EITHER A 3" STEEL SURVEY MARKER SPIKE OR A 3" DURANAIL FROM THE TIES. THE MONUMENTS OF RECORD ARE STILL BELOW THE PAVMENT.

FIELD BOOK _____ PAGE # _____ SHEET 2 OF 3

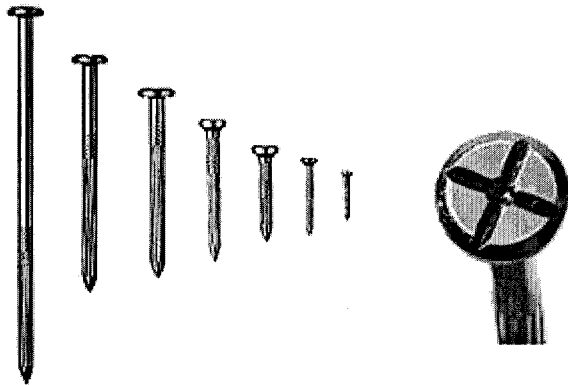
SHOW A PLAN VIEW DRAWING DEPICTING THE CORNER MONUMENT AND SURROUNDING PHYSICAL FEATURES, INCLUDING THE EXCAVATION AREA AND DEPTH.

PLANNING & ZONING COMMITTEE ADOPTED THIS FORM ON 12/2/1982

CORNER CODE A-13(1)

DuraNail

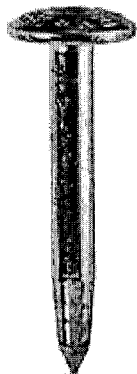
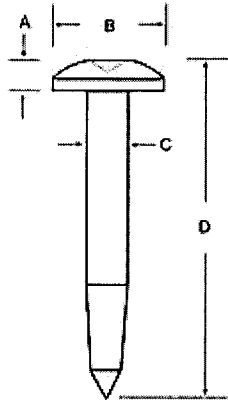
Exclusively From Berntsen



DuraNail

This steel nail will not bend or break and will drive into the asphalt with ease. Not like other nails, it has a deep cross on its larger head along with a center punch. This magnetic nail comes in a variety of lengths. You will receive The Magnetizer with each bag of nails, which will realign the magnetic field after installation to make your DuraNail more detectable

Steel Nail Markers



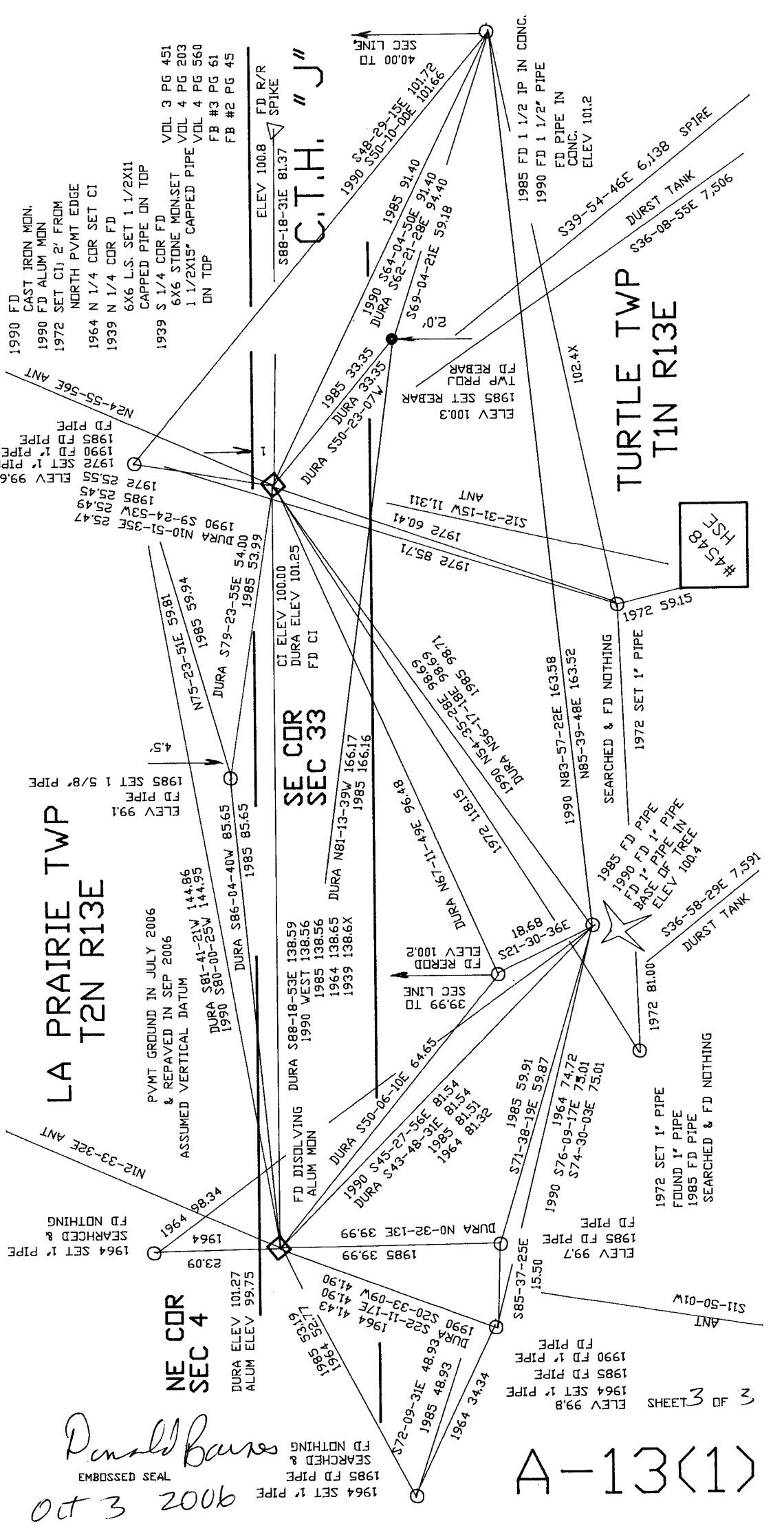
A = 3/16" (5 mm)
B = 1" (25 mm)
C = 11/32" (9 mm)
D = 3" (76 mm)

The Steel Nail Marker is super strong solid steel and drives easily into blacktop. "SURVEY MARK" is imprinted on top of nail for easy identification as a survey mark. The SNM1 has a 1" (25mm) convex top and conical recessed center chamfer for pinpoint accuracy.

Donald Bauney
OCT 3 2006

2 of 3

A-13(1)



Donald Baines
 EMBOSSED SEAL
 OCT 3 2006

A-13(1)

TURTLE TWP
 T1N R13E

C.T.H. "J"

SE CDR
 SEC 33

LA PRAIRIE TWP
 T2N R13E

NE COR
 SEC 4

#4548
 HSE

2 OF 2 SHEETS