

U.S. PUBLIC LAND SURVEY MONUMENT RECORD

For Public Land Survey Corners in:

WI ADMINISTRATIVE CODE A-E 7.08 REQUIREMENT

T. 4 N., R. 12 E

CORNER CODE INDEX

A	1	2	3	4	5	6	7	8	9	10	11	12	13	14	15	16	17	18	19	20	21	22	23	24	25
B																									
C	6					5				A				3				2						1	
D																									
E																									
F																									
G	7					8			9		10			11				12							
H																									
I																									
J																									
K	18					17			16		15			14				13							
L																									
M																									
N																									
O																									
P	19					20			21		22			23				24							
Q																									
R																									
S																									
T	30					29			28		27			26				25							
U																									
V																									
W																									
X	31					32			33		34			35				36							
Y																									
Z																									

FULTON TWP
ROCK COUNTY WI

IF AVAILABLE
ROCK COUNTY COORDINATES PREFERRED

North _____ Elev. _____

East _____

Hor. Datum _____ Vert. Datum _____

LATITUDE _____ ELLIPS. HT. _____

LONGITUDE _____

GPS (X) _____ TRAVERSE (X) _____

BASED ON THE FOLLOWING CONTROL:

PLACE MONUMENT SYMBOL AT PROPER LOCATION ON ABOVE INDEX

CORNER MONUMENT

WITNESS MONUMENT

(a)

BEARINGS ARE BASED ON:

OBSERVATION SHEET

FIELD BOOK _____ PAGE # _____

SHEET 1 OF 2

SHOW A PLAN VIEW DRAWING DEPICTING THE CORNER MONUMENT AND SURROUNDING PHYSICAL FEATURES, INCLUDING THE EXCAVATION AREA AND DEPTH.

PLANNING & ZONING COMMITTEE ADOPTED THE ABOVE FORM ON 12/2/1982

CORNER CODE G-13(1)

FU537

(B) Describe any record evidence, monument evidence, occupational evidence, testimonial evidence or any other material evidence you considered, and whether the monument was found or placed.

1834 HARRISON ORIG. SURVEYOR.

NORTH BETWEEN SECS 9 & 10

377.52 RED OAK 12

2640 TO A HICKORY 10 INCHES IN DIAMETER IN WHICH ESTABLISHED QUARTER SEC COR.

3498 TRAIL CRS N.E.

3664.98 RED OAK 8

3994.98 TRAIL NE & ROAD

5016 TRAIL N.E.

5280 COR TO SECS 3, 4, 9, 10

18?? RUGER VOL 5 VOL 431 HICKORY 10 CORNER.

1872 LEE VOL 2 PG 489 HICKORY TREE AT COR VAR 8-25 2669.70 TO SE COR SEC 9 5352.6 VAR 8 TO W 1/4 COR SEC 9

1891 BLEEDORN VOL 2 PG 436 HICKORY AT COR 2670.36 TO SE COR SEC 9.

1907 KERCH VOL 3 PG 40 SET 1/2" IRON ROD 24.75' EAST OF 1/4 SEC COR. FD 3/4" BOLT IN TOP OF HICKORY STUMP. PLACED LARGE RED HH ON WEST SIDE.

1931 SUNNY VOL 3 PG 197 AT W 1/4 COR SEC 10 FOUND IRON BOLT IN STUMP 2' BELOW SURFACE.

1939 SUNNY VOL 3 PG 447 FD 1" BOLT IN HICKORY STUMP. SET 1"X24" IRON PIPE IN CONCR. ROAD FOR CORNER. REFERENCED SAME. SKETCH SHOWS 2.8' WEST OF CENTER OF PVMT. NOTE: RAISED TO TOP PVMT BY WI HWY COM. 1960.

1978 SANDSNESS VOL 5 PG 447 N/S 302,301.999; E/W 2,249,040.878 ELEV 878.58

1986 BARNES VOL 6 PG 3 FD BRASS PLUG. REPLACED WITH ALUM. MON.

1986 WEIR G-13 FOUND AN ALUMINUM MONUMENT REPRESENTING THE EAST 1/4 CORNER OF SECTION 9. THE POSITION OF THE MONUMENT FITS THE LOCATION AS SHOWN ON PREVIOUS SURVEY RECORDS. I ACCEPTED THIS LOCATION AND ESTABLISHED FOUR NEW TIES AS SHOWN.

1988 BARNES VOL 6 PG 377 IN VOL 6 PG 3 THE E 1/4 COR SEC 10 SHOULD BE THE W 1/4 COR OF SEC 10.

FD ALUM. & TIES. MON IS 3.5 WEST OF CENTER PVMT.

C) Was the corner restored through acceptance of (1) an obliterated evidence location, or, (2) a found perpetuated location?

ACCEPTED FOUND PERPETUATED LOCATION.

D) Describe any material discrepancy between the location of the corner as restored or reestablished and the location of that corner as previously restored or reestablished by distance and direction. Show the discrepancy on the plan view drawing under (a), above. Show the distances between the corner as previously restored or reestablished and (1) the corner as restored or reestablished, and (2) to at least 4 of the witness monuments shown on the drawing in (a), above.

(E) Was the corner reestablished through lost corner proportionate methods? If so, show the method, including the directions and distances to other public land survey corners used as evidence or used for proportioning the corner location.

I, Donald Barnes, hereby certify that the corner location as identified by the corner code index was determined by me under my direction and control and that this U.S. Public Land Survey Monument Record is correct and complete to the best of my knowledge and belief.

seal



emboss

May 12, 1999

Number of included sheets 1

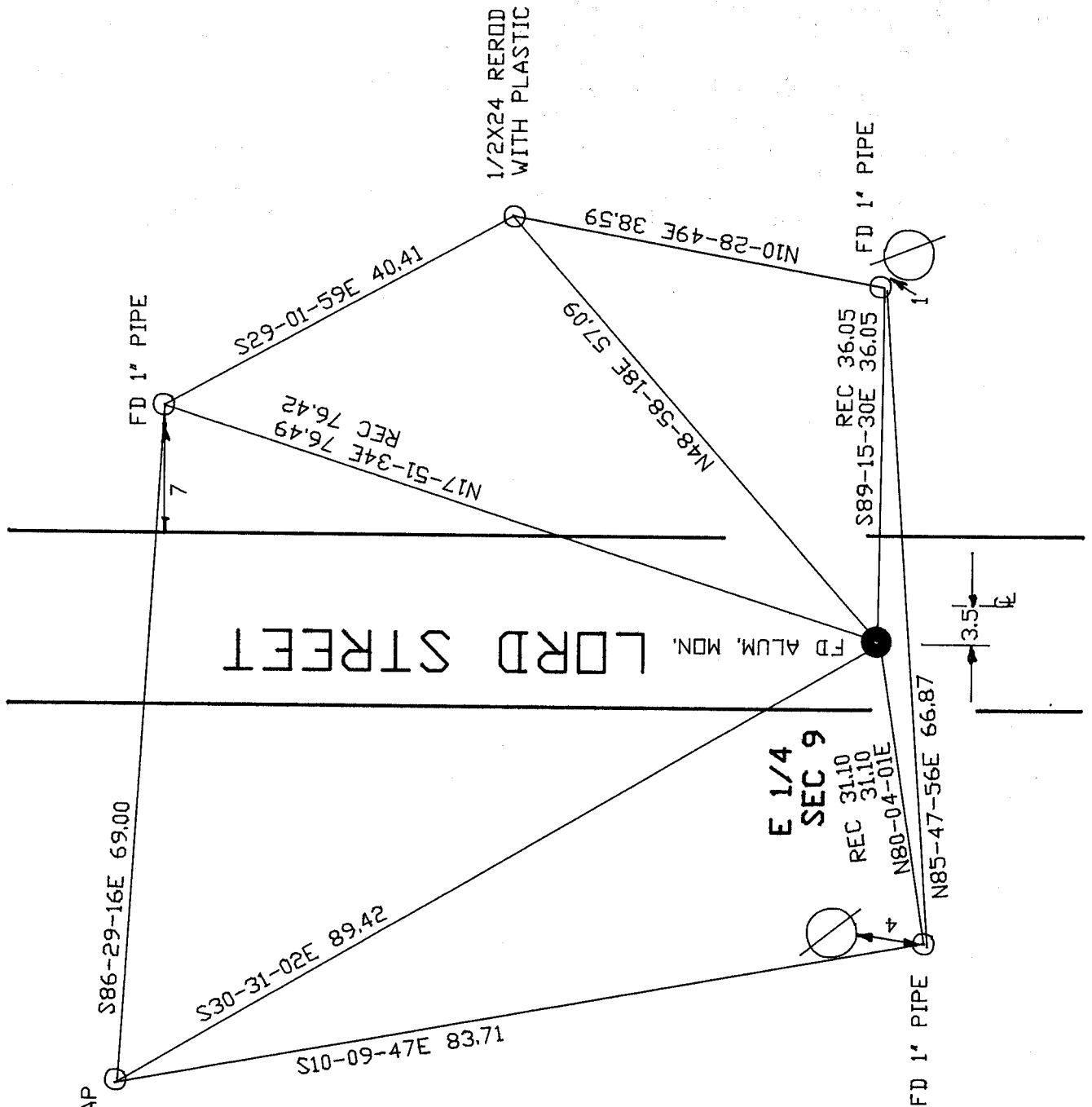
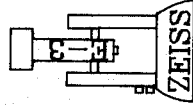
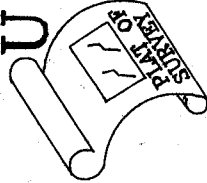
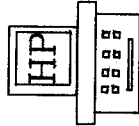
CORNER CODE G-13(1)

A

ASSUMED PROJECTION

ROCK COUNTY

SURVEY



1/2X24 REROD WITH PLASTIC CAP

Donald Barnes
EMBOSSSED SEAL
May 7 1999

G-13(1)