

# U.S. PUBLIC LAND SURVEY MONUMENT RECORD

For Public Land Survey Corners In:

WI ADMINISTRATIVE CODE A-E 7.08 REQUIREMENT

T. 4 N. R. 12 E. 4th P.M.

REV 10/23/2004

USMONREC.DWG

### CORNER CODE INDEX

FULTON TWP

ROCK COUNTY WI

IF AVAILABLE

ROCK COUNTY COORDINATES PREFERRED

1	2	3	4	5	6	7	8	9	10	11	12	13	14	15	16	17	18	19	20	21	22	23	24	25	
A																									A
B	6					5					4				3					2				1	B
C																									C
D																									D
E																									E
F																									F
G	7					8					9			10					11				12		G
H																									H
J																									J
K																									K
L	18					17					16			15					14				13		L
M																									M
N																									N
O																									O
P	19					20					21			22					23				24		P
Q																									Q
R																									R
S																									S
T	30					29					28			27					26				25		T
U																									U
V																									V
W																									W
X	31					32					33			34					35				36		X
Y																									Y
Z																									Z

North \_\_\_\_\_ Elev. \_\_\_\_\_

East \_\_\_\_\_

Hor. Datum \_\_\_\_\_ Vert. Datum \_\_\_\_\_

LATITUDE \_\_\_\_\_ ELLIPS. HT. \_\_\_\_\_

LONGITUDE \_\_\_\_\_

NAD83(91) \_\_\_\_\_ NETWORK ADJ. YR \_\_\_\_\_

GPS (X) \_\_\_\_\_ TRAVERSE (X) \_\_\_\_\_

BASED ON THE FOLLOWING CONTROL:

PLACE MONUMENT SYMBOL  AT PROPER LOCATION ON ABOVE INDEX

CORNER MONUMENT

WITNESS MONUMENT

(a)

BEARINGS ARE BASED ON: \_\_\_\_\_

FIELD BOOK \_\_\_\_\_ PAGE # \_\_\_\_\_

SHEET 1 OF 4

SHOW A PLAN VIEW DRAWING DEPICTING THE CORNER MONUMENT AND SURROUNDING PHYSICAL FEATURES, INCLUDING THE EXCAVATION AREA AND DEPTH.

PLANNING & ZONING COMMITTEE ADOPTED THIS FORM ON 12/2/1982

CORNER CODE E-11(3)

FU526 ^

(B) Describe any record evidence, monument evidence, occupational evidence, testimonial evidence or any other material evidence you considered, and whether the monument was found or placed.

- 1834 (MAR/APR) HARRISON EAST ON RAND BET. 4 & 9  
1372.8 ENTERED MARSH  
2640 TEMPY 1/4 SEC COR IN MARSH  
5082 ? MARSH  
5332.8 INT. EAST BDY 18.48' NORTH OF POST  
WEST COR WEST  
2666.4 QUARTER SEC COR. BURR OAK 12 S5W 248 NO OTHER  
NEAR.  
5332.8 SEC COR.
- 1882 RUGER VOL 2 PG 390 & #1021 CALLS FOR STAKE. VAR 6-30 TO SE  
COR SEC 4.
- 1883 RUGER VOL 2 PG 412 & 1023 STATES NOTHING ABOUT  
MONUMENT. CALLS FOR 2696.76 TO SW COR SEC 4 WITH 1/16TH  
COR ON LINE.
- 18?? RUGER VOL 5 PG 431 FIELD BOOK R-K PG 144. FOUND OLD  
STAKE & STUMP OF SE, SW, & NW BEARING TREES. SET  
IRREGULAR POINTED HH 17X9X7 SURROUNDED BY 5 HH.
- 1888 RUGER BK 4 PG 28 CULTON'S ADD. TO EDGERTON STATES  
NOTHING ABOUT MON.
- 1891 BLEEDORN BK 5 PG 25 CULTON'S 3<sup>RD</sup> ADD. STATES NOTHING  
ABOUT TYPE OF MON.
- 1899 TOME BK 6 PG 27 RANDOLPH'S ADD. STATES NOTHING ABOUT  
MON. 1325.94 TO STONE SURROUNDED BY 4 HH AT W 1/16<sup>TH</sup> 1/4  
OF SE 1/4 SEC 4
- 1942 SUNNY #2055 O.L. 185 IRON PIPE SET BY ME
- 1944 SUNNY #3375 CULTON'S 3<sup>RD</sup> ADD. STATES NOTHING ABOUT MON.  
PLACED 2X2 1/2X6' ANGLE IRON ON SOUTH LINE SE 1/4 SEC 4  
1962.5 EAST OF S 1/4 COR SEC 4
- 1974 WEIR #3372 CULTON'S ADD. FD IRON STAKE. WEST 379.50 FROM  
SE COR OF LOT THAT ADJOINS THE SECTION LINE OF SEC 4 & SAID  
LOT COR IS ON THE WEST R/W LINE OF GARFIELD RD.
- 1974 WPL VOL 6 PG 303 N88-34-38E 2701.45 FROM SW TO S 1/4 COR  
SEC 4.
- 1978 SANDNES VOL 5 PG 447 N/S 304,907.417; E/W 2,246,298.976.
- 197? SANDNES #2130 STATES NOTHING ABOUT MON. 2701.70 TO SW  
COR SEC 4 & ANGLE 89-35-54 @ S 1/4 COR SEC 4 FROM SW COR SEC  
4 TO N/S 1/4 LINE.
- 1978 SANDNES #6177,1009,1054 2" PIPE
- 1978 SANDNES #1033, 1103, 1105, EDGERTON MAPPING CONTROL
- 1978 NORTHROP CSM VOL 7 PG 275 FD PIPE
- 1978 SANDNES #1056 STATES NOTHING ABOUT MON. 2701.70 TO SW  
COR SEC 4, ANGLE 90-23-23 @ SW COR SEC 4 FROM W 1/16<sup>TH</sup> COR  
OF SW 1/4 SEC 4 TO S 1/4 COR SEC 4, & ANGLE @ S 1/4 COR SEC 4  
FROM SW COR SEC 4 TO ALONG N/S 1/4 LINE OF SEC 4 IS 89-35-54
- 1978 SANDNES #1029 GROUND CONTROL FOR MAPPING.
- 1979 WEIR BK 30 PG 21 WALKER'S ADD. FD 2" PIPE
- 1983 BARNES VOL 6 PG 303 304,907.42; 2,246,298.98.45 TO SW COR  
SEC 4
- 1983 WEIR CSM VOL 11 PG 240 FD 2" PIPE
- 1983 WEIR #2153 SUB FD 2" PIPE
- 1985 WEIR E-11 FOUND 2" DIA. IRON PIPE. PREVIOUS SURVEYS  
REFERENCED TO THE CORNER STATE THAT A 2" DIA. IRON PIPE WAS  
FOUND AND USED ACCEPTED AS THE NORTH 1/4 CORNER OF  
SECTION. THERE WAS NO PREVIOUS TIE SHEET FOR THIS  
CORNER AT THE COUNTY SURVEYORS OFFICE. A SURVEY BY B.J.  
SUNNY, DATED JULY 14 & 16, 1942 STATES THAT HE SET A 2"X30"  
IRON PIPE AT THE NORTH 1/4 WHEN DOING A SURVEY OF OUT LOT  
185 OF THE ASSESSOR'S PLAT OF THE CITY OF EDGERTON. I  
ACCEPTED THE IRON PIPE AS REPRESENTING THE NORTH 1/4  
CORNER OF SECTION 9 AND TIED AS SHOWN BELOW.  
304,907.36N/W; 2,246,299.227

PAGE 1 OF 4 3

CORNER CODE E-11(2)

*David D. Baines*

6-26-06

- 1985 SANDSNES #13758 & 13759 SUB STATES NOTING ABOUT MON. 2694.72 TO NE COR SEC 9 & ANGLE 89-22-29 @ N ¼ COR SEC 9 FROM NE COR SEC 9 TO N/S ¼ LINE.
- 1985 SANDSNES CSM VOL 12 PG 35 FD 2" PIPE
- 1985 COMBS CSM VOL 12 PG 250 & 415 FD PIPE 2161.26 NORTH OF CENTER LINE OF GTH F, 1353.37 TO SOUTH R/W LINE OF HAIN RD
- 1985 COMBS #13237 STATES NOTHING ABOUT MON. 2701.56 TO NW COR SEC 9 & ANGLE 90-12-45 @ N ¼ COR SEC 9 FROM FD PIPE AT CEN SEC 9 TO NW COR SEC 9
- 1986 COMBS CSM VOL 12 PG 422 FD PIPE 1311.87 TO CENTER OF HAIN RD
- 1987 COMBS CSM VOL 13 PG 72 ALUM. MON.
- 1990 SANDSNES #1621 WALKER'S ADD. STATES NOTHING ABOUT MON.
- 1991 COMBS CSM VOL 15 PG 301 1" PIPE 2701.56 TO NW COR SEC 9
- 1992 RADL CSM VOL 15 PG 463 2" PIPE. 2694.77 TO NE COR SEC 9
- 1992 COMBS BK 32 PG 131 EDGEVIEW HEIGHTS FD 1" PIPE 2701.56 TO NW COR SEC 9
- 1993 COMBS CSM VOL 17 PG 85 FD PIPE 2701.56 TO SW COR SEC 4
- 1993 NORTHROP CSM VOL 16 PG 457 2" PIPE 2694.97 TO SE COR SEC 4.
- 1994 KREBS CSM VOL 17 PG 389 2" PIPE 2663.1 TO 1" PIPE @ CEN SEC 9
- 1994 KIENBAUM BK 32 PG 230 EDGEVIEW HEIGHTS #2 2" PIPE 2701.56 TO NW COR SEC 9 & ANGLE 90-13-00 @ N ¼ COR SEC 9 FROM N/S ¼ LINE SEC 9 TO NW COR SEC 9
- 1994 COMBS BK 32 PG 223 HERITAGE VALLEY ESTATES FD 1" PIPE 2701.56 TO SW COR SEC 4.
- 1995 NORTHROP #5686 & 5825 SUB EXISTING 2" PIPE 2701.50 TO SW COR SEC 4 & ANGLE 89-37-59 @ S ¼ COR SEC 4 FROM SW COR SEC 4 TO ALONG THE N/S ¼ LINE.
- 1995 COMBS CSM VOL 19 PG 1 PIPE 2701.56 TO SW COR SEC 4
- 1995 COMBS CSM VOL 19 PG 9 PIPE 2701.56 TO SW COR SEC 4
- 1995 LATHROP CSM VOL 18 PG 262 ALUM. MON. 1311.87 TO CENTER OF HAIN RD.
- 1995 NORTHROP #5825 & 5824 ASSESSOR'S PLAT OL 71. FD 2" PIPE & ANGLE 89-37-59 @ S ¼ COR SEC 4 FROM SW COR SEC 4 TO N/S ¼ LINE SEC 4.
- 1996 COMBS CSM VOL 19 PG 491 PIPE 2701.56 TO SW COR SEC 4
- 1997 KREBS CSM VOL 20 PG 353 2" PIPE 2663.10 TO CEN SEC 9
- 1997 REIGEL CSM VOL 21 PG 20 2" PIPE 2663.11 TO CEN SEC 9
- 1998 WEIR CSM VOL 21 PG 306 2" PIPE, 304,907.362; 2,246,299.227
- 1998 REIGEL E-11(1) I FOUND A 2" IRON PIPE AS OPPOSED TO AN ALUMINUM MONUMENT CALLED FOR ON CSM NO 650, VOL 18 PAGES 262-264. I VERIFIED ITS POSITION USING CSM NO 650 AND SET 4 TIES AS SHOWN. EAST SIDE OF RETENTION POND
- 1999 LATHROP CSM VOL 23 PG 41 PIPE. 2701.56 TO SW COR SEC 4 & ANGLE 90-12-25 @ SW COR SEC 4 FROM WEST LINE OF SW ¼ SEC 4 TO S ¼ COR SEC 4
- 1999 KOFMEISTER #14455 FD ALUM MON. N01-23-20W 5294.74 TO ALUM MON @ N ¼ COR SEC 4. N01-23-20W 2640.53 TO CENTER OF SEC 4. FD NOTHING NOR SET ANYTHING AT CENTER. NOTE: BEARINGS FOR THIS SURVEY AND MAP ARE BASED ON GRID NORTH AS DETERMINED BY GPS METHODS IN 1999.
- 1999 FAVORITE CSM VOL 22 PG 249 2" PIPE 304,907.36; 2,246,299.23
- 1999 COMBS CSM VOL 23 PG 35 PIPE 2701.56 TO SW COR SEC 4
- 2000 KAUKL CSM VOL 24 PG 30 PIPE 2701.56 TO SW COR SEC 4
- 2002 KAUKL CSM VOL 25 PG 285 IRON PIPE FOUND ANGLE OF 90-23-23 @ SW COR SEC 4 FROM W ¼ COR SEC 4 TO S ¼ COR SEC 4
- 2002 COMBS CSM VOL 25 PG 328 PIPE 2701.38 TO SW COR SEC 4

PAGE 2 OF 4

CORNER CODE E-11(2)

*Dennis W. Barnes*  
6-26-06

2002 COMBS CSM VOL 26 PG 25 ALUM. 2663.10 TO CEN SEC 9  
 2002 COMBS BK32-569  
 2003 LATHROP CSM 26-122 FD PIPE. 2701.56 TO FD R/R SPIKE @ SW  
 COR SEC 4  
 2003 LATHROP CSM 26 PG 287 FD PIPE S88-34-42W 2701.56 TO SW  
 COR SEC 4. ANGLE @ SW COR SEC 4 FROM WEST LINE SEC 4 TO S  
 1/4 COR SEC 4 90-23-23

**FD 2" PIPE & REFERENCE PIPES**

C) Was the corner restored through acceptance of (1) an obliterated evidence location, or, (2) a found perpetuated location?

**ACCEPTED FD PIPE.**

D) Describe any material discrepancy between the location of the corner as restored or reestablished and the location of that corner as previously restored or reestablished by distance and direction. Show the discrepancy on the plan view drawing under (a), above. Show the distances between the corner as previously restored or reestablished and (1) the corner as restored or reestablished, and (2) to at least 4 of the witness monuments shown on the drawing in (a), above.

(E) Was the corner reestablished through lost corner proportionate methods? If so, show the method, including the directions and distances to other public land survey corners used as evidence or used for proportioning the corner location.

I, **Donald Barnes**, hereby certify that the corner location as identified by the corner code index was determined by me under my direction and control and that this U.S. Public Land Survey Monument Record is correct and complete to the best of my knowledge and belief.

seal  
*Donald Barnes*

6-26-06

emboss

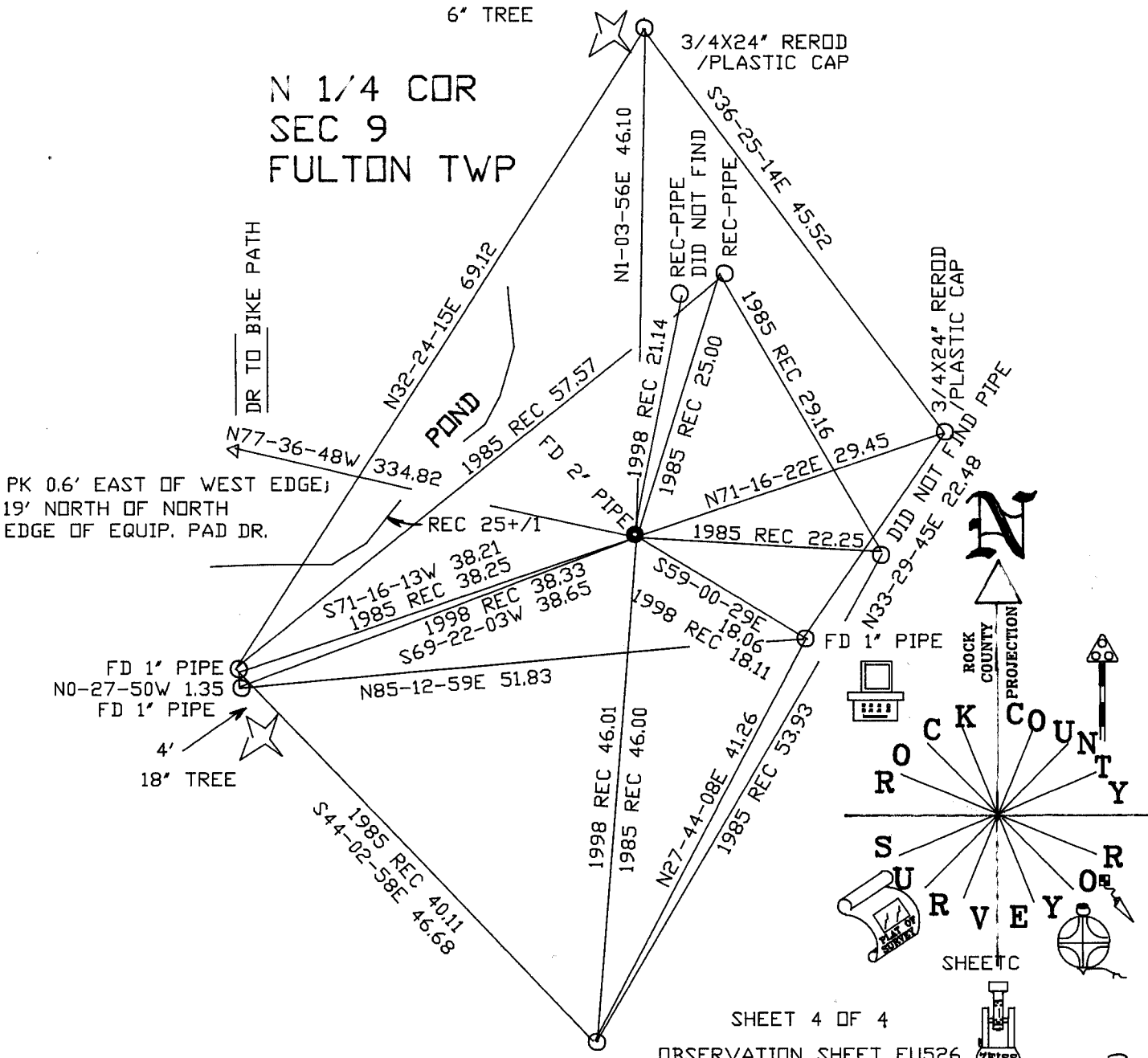
Number of included sheets **3 of 4**

3

CORNER CODE **E-11(2)**

**A-E 7.08 REQUIREMENT**

N 1/4 COR  
SEC 9  
FULTON TWP



SHEET 4 OF 4  
OBSERVATION SHEET FU526

FD 1' PIPE  
WITH FLAGGING  
8" ABOVE GRADE  
PUSHED TO GRADE

NOT TO SCALE

E-11 (3)

EMBOSSED SEAL

Ronald Barnes  
6-26-06