

# U.S. PUBLIC LAND SURVEY MONUMENT RECORD

For Public Land Survey Corners in:

WI ADMINISTRATIVE CODE A-E 7.08 REQUIREMENT

T. 3 N., R. 11 E

### CORNER CODE INDEX

A	1	2	3	4	5	6	7	8	9	10	11	12	13	14	15	16	17	18	19	20	21	22	23	24	25
B																									
C	6																								
D																									
E																									
F																									
G	7	8	9																						
H																									
I																									
J																									
K																									
L	18	17	16	15	14	13																			
M																									
N																									
O																									
P	19	20	21	22	23	24																			
Q																									
R																									
S																									
T	30	29	28	27	26	25																			
U																									
V																									
W																									
X	31	32	33	34	35	36																			
Y																									
Z																									

CENTER TWP

ROCK COUNTY WI

IF AVAILABLE  
ROCK COUNTY COORDINATES PREFERRED

North \_\_\_\_\_ Elev. \_\_\_\_\_

East \_\_\_\_\_

Hor. Datum \_\_\_\_\_ Vert. Datum \_\_\_\_\_

LATITUDE \_\_\_\_\_ ELLIPS. HT. \_\_\_\_\_

LONGITUDE \_\_\_\_\_

GPS (X) \_\_\_\_\_ TRAVERSE (X) \_\_\_\_\_

BASED ON THE FOLLOWING CONTROL:

PLACE MONUMENT SYMBOL  AT PROPER LOCATION ON ABOVE INDEX

CORNER MONUMENT

WITNESS MONUMENT

(a)

BEARINGS ARE BASED ON:

FIELD BOOK \_\_\_\_\_ PAGE # \_\_\_\_\_

SHEET 1 OF 2

SHOW A PLAN VIEW DRAWING DEPICTING THE CORNER MONUMENT AND SURROUNDING PHYSICAL FEATURES, INCLUDING THE EXCAVATION AREA AND DEPTH.

PLANNING & ZONING COMMITTEE ADOPTED THE ABOVE FORM ON 12/2/1982

CORNER CODE A-11 (1)

CE506

(B) Describe any record evidence, monument evidence, occupational evidence, testimonial evidence or any other material evidence you considered, and whether the monument was found or placed.

- 1974 LEE VOL 5 PG 38 SET ALUM. MON. & REFERENCED SAME
- 1977 LEE VOL 5 PG 467 CALLS FOR LOCAL COORDINATES TO THE NEAREST FOOT OF OCCUPATION ON THE NORTH LINE OF SEC 4.
- 1979 BARNES VOL 6 PG 5 CALLS FOR 2620.16 TO THE NE COR SEC 4, 5050.10 TO S 14 COR SEC 4, & AND ANGLE OF 91-13-45 AT N 1/4 COR SEC 4 FROM THE NE COR TO THE S 1/4 COR OF SEC 4.
- 1996 BARNES A-11 FOUND ALUM. MON. & REFERENCE TIES.
- 1997 BARNES PORTER FB #3 PG 52 DUG & FOUND ONLY LIMITS OF OLD EXCAVATION.

PLACED ALUM. MONUMENT WITH CARSONITE ON WEST SIDE & TWO MAGNETS 18" DEEP. REFERENCED MONUMENTS.

C) Was the corner restored through acceptance of (1) an obliterated evidence location, or, (2) a found perpetuated location?

LEE DID NOT STATE WHAT HE FOUND OR HOW HE ESTABLISHED THE CORNER. HIS FIELD NOTES ONLY SHOW THE TIES . I FOUND THE LIMITS OF HIS EXCAVATION. BASED ON MEASURED DISTANCES TO THE WEST & EAST, I BELIEVE HIS ALUM. MONUMENT WAS INCORRECTLY CALLED BY HIM AS THE N 1/4 COR OF SEC 4. I BELIEVE IT IS THE S 1/4 COR SEC 33. THE N 1/4 CORNER WAS NOT ESTABLISHED BY THE ORIGINAL GOVERNMENT SURVEYOR. I ESTABLISHED IT ON LINE WITH THE S 1/4 COR SEC 33 AND THE SW COR SEC 33 MID WAY BETWEEN THE NW & NE CORNERS OF SEC 4.

D) Describe any material discrepancy between the location of the corner as restored or reestablished and the location of that corner as previously restored or reestablished by distance and direction. Show the discrepancy on the plan view drawing under (a), above. Show the distances between the corner as previously restored or reestablished and (1) the corner as restored or reestablished, and (2) to at least 4 of the witness monuments shown on the drawing in (a), above.

THE DISCREPANCY WITH THE FOUND PK & FOUND ALUMINUM MONUMENT IS SHOWN.

(E) Was the corner reestablished through lost corner proportionate methods? If so, show the method, including the directions and distances to other public land survey corners used as evidence or used for proportioning the corner location .

I, Donald Barnes, hereby certify that the corner location as identified by the corner code index was determined by me under by direction and control and that this U.S. Public Land Survey Monument Record is correct and complete to the best of my knowledge and belief .

seal

Number of included sheets 1

emboss

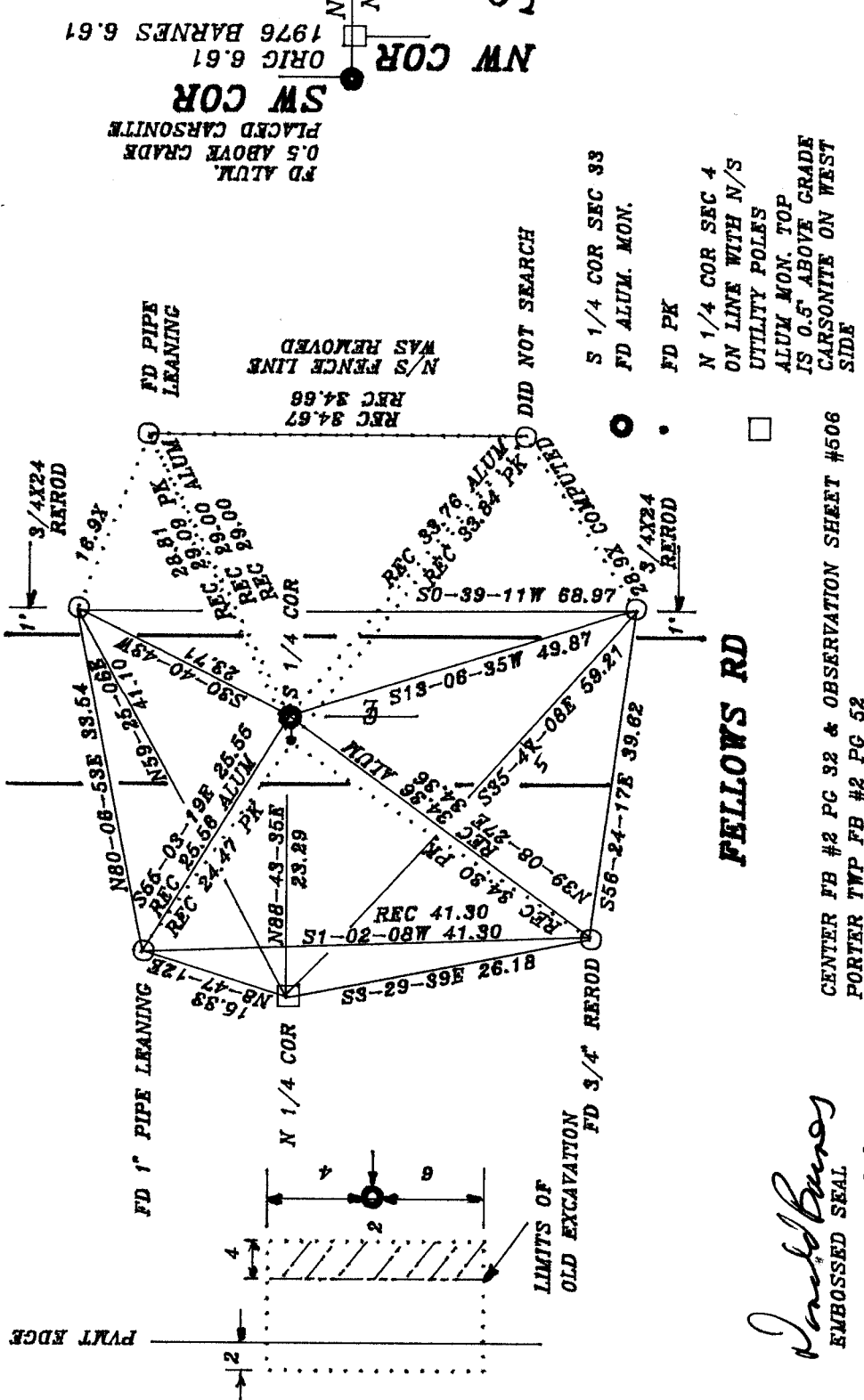
*Donald Barnes*  
*Feb 5, 1999*

A-E 7.08 REQUIREMENT

CORNER CODE

*A-11*

PORTER TWP  
SEC 33  
SEC 4  
CENTER TWP



FELLOWS RD

CENTER FB #2 PG 32 & OBSERVATION SHEET #506  
PORTER TWP FB #2 PG 52

*David Barnes*  
EMBOSSED SEAL  
FEB 5, 1999