

Paper weight-110# (minimum) Black nonfading ink required

U.S. PUBLIC LAND SURVEY MONUMENT RECORD

For Public Land Survey Corners In:
 T. N. R. - E. 4th P.M.
 4 CORNER CODE INDEX

WI ADMINISTRATIVE CODE A-E 7.08 REQUIREMENT

REV 10/23/2004 USMONREC.DWG

MILTON

TWP

ROCK COUNTY WI

IF AVAILABLE
 ROCK COUNTY COORDINATES PREFERRED

North _____ Elev. _____

East _____

Hor. Datum _____ Vert. Datum _____

LATITUDE _____ ELLIPS. HT. _____

LONGITUDE _____

NAD83(91) _____ NETWORK ADJ. YR 2012

GPS (X) _____ TRAVERSE (X) X

BASED ON THE FOLLOWING CONTROL:

Township Project _____

A	1	2	3	4	5	6	7	8	9	10	11	12	13	14	15	16	17	18	19	20	21	22	23	24	25	A
B		6				5					4				3					2					1	B
C																										C
D																										D
E																										E
F																										F
G																										G
H																										H
J																										J
K																										K
L																										L
M																										M
N																										N
O																										O
P																										P
Q																										Q
R																										R
S																										S
T																										T
U																										U
V																										V
W																										W
X																										X
Y																										Y
Z																										Z

PLACE MONUMENT SYMBOL AT PROPER LOCATION ON ABOVE INDEX

CORNER MONUMENT

WITNESS MONUMENT

(a)

BEARINGS ARE BASED ON: ROCK COUNTY PROJECTION

FIELD BOOK _____ PAGE # _____
 OR OBSERVATION SHEET _____

SHEET 1 OF 4

SHOW A PLAN VIEW DRAWING DEPICTING THE CORNER MONUMENT AND SURROUNDING PHYSICAL FEATURES, INCLUDING THE EXCAVATION AREA AND DEPTH.

PLANNING & ZONING COMMITTEE ADOPTED THIS FORM ON 12/2/1982

CORNER CODE G-19(1)

MI4538 CENTERSEC 11

(B) Describe any record evidence, monument evidence, occupational evidence, testimonial evidence or any other material evidence you considered, and whether the monument was found or placed.

- 1893 BLEEDORN VOL 2 PG 471 & #02894 SET HH 17X7X6 SURROUNDED BY 4 WHITE BRICKS. VAR 2-05 2673.66 TO W 1/4 COR SEC 11, VAR 2-09 TO N 1/4 COR SEC 11.
- 1939 SUNNY VOL 3 PG 409 SEE PG 453 S88-28W 2689.7X TO FD STONE @ W 1/4 COR SEC 11
- 1939 SUNNY VOL 3 PG 453 FD 3X8X22 HARD CUT STONE SET 1 1/2X13 CAPPED PIPE ON TOP. REFERENCED SAME. SHOWS IN CTH "N". CALLS FOR 48.4' TO NE COR OF PORCH. SOUTHEASTERLY 55.4 TO 40D SPKS WITH WASHERS ON NORTH SIDE OF 20" MAPLE, & SOUTHWESTERLY 57.8 TO 40D SPKS WITH WASHERS ON NORTH SIDE OF 24" MAPLE. ON LINE WITH N/S FENCE TO THE NORTH & 28.8' SOUTH OF E/W FENCE.
- 1967 BATTERMAN VOL 4 PG 324 DUG & FD 3X8X22 HAR CUT STONE WITH 1 1/2X13 CAPPED PIPE SET ON TOP BY BJ SUNNY 1939. S8-39-30E 53.05 TO NE COR OF PORCH. S65-48W 56.47 TO PIPE ON NE SIDE OF 26" MAPLE, S61-56E 63.11 TO PIPE ON WEST SIDE OF 24" MAPLE, N54-42W 140.75 TO PIPE ON SE SIDE OF UP. ALL BEARINGS ARE TRUE BEARINGS. SHOWS IN CTH N.
- 1982 BARNES VOL 6 PG 252 CAPPED PIPE OF RECORD AT CORNER. BEARINGS AS SHOWN ARE BASED ON TRUE NORTH. FIELD BOOK MILTON-13, PG 46
- 1999 BARNES G-19 FD 1" PIPE & TWO PIPES ON NORTH SIDE OF CTH N. SET REROD TO THE SE & SW. 28' SOUTH OF CENTER OF CTH N. DID NOT ACCEPT NOR REJECT PIPE. CORNER MAY BE DISTURBED BY ROAD CONSTRUCTION. CENTER OF SECTION IS APPROXIMATELY 7 EAST OF NW CORNER OF BRICK HOUSE.
- 2004 COMBS CSM VOL 27 PG 254 FD CAPPED PIPE 2668.04 TO ALUM @ E 1/4 COR SEC 11.
- 2005 COMBS CSM VOL 28 PG 163 PIPE. N86-49-30W 2684.41 TO PIPE @ W 1/4 COR SEC 11 & S86-42-14E TO ALUM @ E 1/4 COR SEC 11.
- 2007 COMBS CSM VOL 32 PG 102 FD PIPE. S86-42-14E 131.80 ALONG 1/4 LINE; THENCE S3-07-40W 36.05; THENCE N86-54-51W 84.70; THENCE N86-54-51W 78.32 TO LOT CORNER JUST ABOUT SOUTH OF CENTER.
- 2010 KANNARD CSM VOL 34 PG 118 FD 1" PIPE. S02-50-03W 2639.90 TO FD LS @ S 1/4 COR SEC 11, N86-49-34W 2681.44 TO FD 1" PIPE @ W 1/4 COR SEC 11, S2-54-37W 2654.83 FROM W 1/4 COR SEC 11 TO CONC. MON @ SW COR SEC 11, & S87-08-43E 2684.89 FROM SW TO S 1/4 COR SEC 11.
- 2011 WIDOT TPP 30 & 37 PIPE 320,313.081 519,418.217

FD 1 1/2 PIPE & NW REFERENCE PIPE. THE PIPE IS IN THE SOUTH E/W DITCH LINE. THE MONUMENT WILL PROBABLY BE DISTROYED BY THE STH 26 RELOCATION PROJECT.

Donald
Faulstich
Emboss

SHEET 1 OF 4

May 16, 2012

CORNER CODE G-19(1)

MI4538 CENTERSEC11

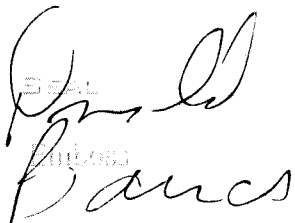
C) Was the corner restored through acceptance of (1) an obliterated evidence location, or, (2) a found perpetuated location?

DID NOT ACCEPT NOR REJECT PIPE OF RECORD. THE HARD HEAD SUNNY FD DOES NOT MATCH THE SIZE OF BLEEDORN'S HARDHEAD. HE ALSO DOESN'T CALL FOR ANY OF THE 4 WHITE BRICKS THAT BLEEDORN SET. IT IS WITHIN 2.1 OF A LINE BETWEEN THE E & W 1/4 CORNERS OF SEC 11 BUT IS 11.30' WEST OF THE N/S 1/4 CORNERS.

D) Describe any material discrepancy between the location of the corner as restored or reestablished and the location of that corner as previously restored or reestablished by distance and direction. Show the discrepancy on the plan view drawing under (a), above. Show the distances between the corner as previously restored or reestablished and (1) the corner as restored or reestablished, and (2) to at least 4 of the witness monuments shown on the drawing in (a), above.

(E) Was the corner reestablished through lost corner proportionate methods? If so, show the method, including the directions and distances to other public land survey corners used as evidence or used for proportioning the corner location.

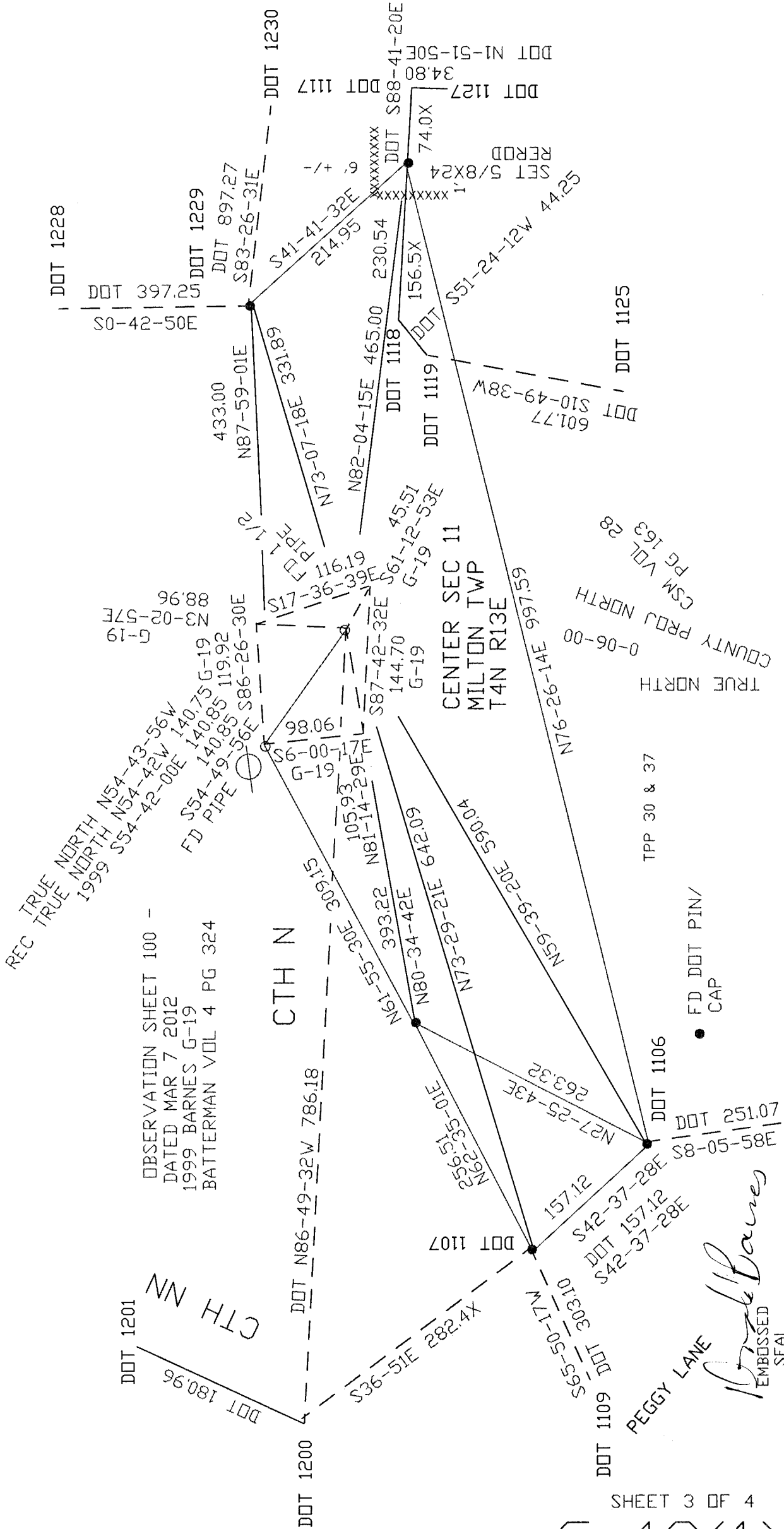
I, **Donald Barnes**, hereby certify that the corner location as identified by the corner code index was determined by me under my direction and control and that this U.S. Public Land Survey Monument Record is correct and complete to the best of my knowledge and belief.


Seal
Notary
Barnes

SHEET 2 OF 4

May 16, 2012

CORNER CODE G-19(1)
A.E. 7.08 REQUIREMENT



REC TRUE NORTH N54-43-56W
 TRUE NORTH N54-42W 1999 S54-42-00E 140.75
 OBSERVATION SHEET 100 -
 DATED MAR 7 2012
 1999 BARNES G-19
 BATTERMAN VOL 4 PG 324
 FD PIPE 140.85
 S54-49-08S 119.92
 S56E S86-26-30E

SHEET 3 OF 4
 G-19(1)

PEGGY LAINE
 Embossed Seal
 BARNES
 MAY 16, 2012

TRUE NORTH
 COUNTY PROJ NORTH
 0-06-00
 CSM VOL 28
 PG 163

TPP 30 & 37

● FD DOT PIN/
 CAP

DOT 1105

2012 BARNES ADJ S86-39-55E 2664.38
1983 BARNES TWP S86-39-59E 2665.07
1976 BARNES 5-175 2664.17
1871 RUGER REMON 2659.80
1892 BLEEDORN 2-471 2659.80
DRIG 2646.60

N 1/4 COR
SEC 11

2012 BARNES ADJ S86-40-49E 2664.03
1983 BARNES TWP S89-40E 2664.2X
1976 BARNES 5-175 2664.17
1871 RUGER REMON 2659.80
DRIG 2646.60

NE COR
SEC 11

NW COR
SEC 11

2012 BARNES ADJ N2-42-44E 2661.06
1983 BARNES TWP S2-43-53W 2659.49
1871 RUGER REMON 2649.24
DRIG 2640

DRIG 2640
1871 RUGER REMON 2638.68
1981 NORTHROP CSM10-434 2643.06
2012 BARNES ADJ N2-15-19E 2642.93

2012 BARNES ADJ S86-52-13E 5349.33
1982 BARNES 6-266 S86-50-16E 5349.27
1969 BATTERMAN 4-389 5349.36
1969 BATTERMAN TRUE NORTH N86-45-15W
2012 BARNES ADJ INT S86-49-13E 2670.02

2012 BARNES INT S86-52-13E 2679.31

1/4 COR
SEC 11

W 1/4 COR
SEC 11

2012 BARNES ADJ S2-54-50W 2654.72
2010 KANNARD CSM34-118 S2-54-37W 2654.83
1983 BARNES TWP S2-56-52W 2654.70
1871 RUGER REMON 2651.66
DRIG 2640

1893 BLEEDORN VOL2-471 2673.66
1939 SUNNY VOL3-409 2689.7
1969 BATTERMAN 6-266 2681.35
1974 NORTHROP 6-266 2682.00
2005 COMBS CSM28-163 S86-49-30E 2684.41
2010 KANNARD CSM34-118 S86-49-34E 2681.44
2012 BARNES FD PIPE S86-49-34E 2681.33
1939 SUNNY 89-25-20
1983 BARNES INT 89-47-19
2012 BARNES INT 89-47-19
2010 KANNARD 89-44-11
2012 BARNES INT 89-57-00
2010 KANNARD 89-56-40
1939 SUNNY 90-13-00
2012 BARNES INT 89-43-29
2010 KANNARD 89-58-10
2012 BARNES INT 89-58-46
2010 KANNARD 89-58-46
2012 BARNES INT S2-35-19W 2640.22
2012 BARNES @ INT 90-32-24
2012 BARNES @ INT 90-30-23
2010 KANNARD 90-20-23

11.50

2.06

11.30

2.06

SEC 11
MILTON TWP
TAN RISE

1969 BATTERMAN 4-389 2668.01
2004 COMBS CSM27-254 2668.04
2005 COMBS CSM28-163 S86-54-51E
2012 BARNES FD PIPE S86-54-52E 2668.00
2012 BARNES @ INT 180-00-00
2012 BARNES @ PIPE 180-05-18
2004 COMBS 180-05-21
1982 BARNES 6-266 INT 90-45-51
2012 BARNES PIPE 90-43-11
2012 BARNES INT 90-45-50

DRIG 2640
1871 RUGER REMON 2623.65
1976 BARNES 6-266 2623.14
1982 BARNES 6-266 S2-23-53W 2622.83
1983 BARNES TWP S2-23-49W 2622.83
2012 BARNES ADJ N2-21-57E 2622.86

SW COR
SEC 11

DRIG 2669.70
1871 RUGER REMON 2612.28
1939 SUNNY 2683.20
1975 BARNES 5-82 2688.54
1983 BARNES TWP S87-06-28E 2684.96
2010 KANNARD CSM34-118 S87-08-43E 2684.89
2012 BARNES ADJ S87-08-10E 2685.00

S 1/4 COR
SEC 11

DRIG 2669.70
1871 RUGER REMON 2679.60
1976 BARNES 5-183 2689.36
1983 BARNES S87-15-18E 2689.51
2012 BARNES ADJ S87-17-18E 2689.40

Printed
Barnes May 16, 2012

EMBOSSED
SEAL

G-19(1)