

Paper weight-110# (minimum)

Black nonfading ink required

# U.S. PUBLIC LAND SURVEY MONUMENT RECORD

For Public Land Survey Corners In:

WI ADMINISTRATIVE CODE A-E 7.08 REQUIREMENT

T. 13 N. R. 4 E. 4th P.M.

MILTON

REV 10/23/2004

USMONREC.DWG

4 CORNER CODE INDEX

\_\_\_\_\_ TWP

**ROCK COUNTY WI**

IF AVAILABLE

ROCK COUNTY COORDINATES PREFERRED

North \_\_\_\_\_ Elev. \_\_\_\_\_

East \_\_\_\_\_

Hor. Datum \_\_\_\_\_ Vert. Datum \_\_\_\_\_

LATITUDE \_\_\_\_\_ ELLIPS. HT. \_\_\_\_\_

LONGITUDE \_\_\_\_\_

NAD83(91) \_\_\_\_\_ NETWORK ADJ. YR 2012

GPS (X) \_\_\_\_\_ TRAVERSE (X) X

BASED ON THE FOLLOWING CONTROL:

Township Project \_\_\_\_\_

A	1	2	3	4	5	6	7	8	9	10	11	12	13	14	15	16	17	18	19	20	21	22	23	24	25	A	
B		6				5				4					3					2						1	B
C																											C
D																											D
E																											E
F																											F
G																											G
H																											H
I																											I
J																											J
K																											K
L																											L
M																											M
N																											N
O																											O
P																											P
Q																											Q
R																											R
S																											S
T																											T
U																											U
V																											V
W																											W
X																											X
Y																											Y
Z																											Z

PLACE MONUMENT SYMBOL  AT PROPER LOCATION ON ABOVE INDEX

CORNER MONUMENT

WITNESS MONUMENT

BEARINGS ARE BASED ON: ROCK COUNTY PROJECTION

FIELD BOOK \_\_\_\_\_ PAGE # \_\_\_\_\_  
OR OBSERVATION SHEET \_\_\_\_\_

SHEET 1 OF 2

SHOW A PLAN VIEW DRAWING DEPICTING THE CORNER MONUMENT AND SURROUNDING PHYSICAL FEATURES, INCLUDING THE EXCAVATION AREA AND DEPTH.

PLANNING & ZONING COMMITTEE ADOPTED THIS FORM ON 12/2/1982

CORNER CODE E-19(1)

MI530 MILTWP N1/4 SEC 11

(B) Describe any record evidence, monument evidence, occupational evidence, testimonial evidence or any other material evidence you considered, and whether the monument was found or placed.

- 18?? VOL 6 PG 331 TERRITORIAL ROAD RECORDS. SHOWS CORNER 165' WEST OF CENTER OF PAVEMENT.
- 1871 RUGERS REMONUMENTATION NOTES. EAST ON NORTH LINE NW 1/4 SEC 11 ON A VAR 3@25 OFFSET 15 LKS AT 2659.8 INTERSECTED 1/4 LINE 18 LKS N OF 1/4 COR. FOUND OLD STAKE & LIME STONE AT CORNER ALSO FOUND WHERE STUMP OF BEARING TREE HAD BEEN DUG UP. CORRECTED VAR-22 PLACED CUT LIMESTONE. EAST ON N LINE NE 1/4 ON A VAR 3-30 OFFSET NORTH 10 LKS SOUTH 30 LKS AT 2659.80 INTERSECTED EAST BOUNDARY LINE 210 LKS SOUTH OF COR. FOUND OLD STAKE AT COR ALSO FD STUMP OF SW BT & WHERE STUMP OF NE B.T. HAD BEEN DUG UP. 2659.8 TO NW COR SEC 11 & 2659.8' TO NE COR SEC 11.
- 1892 BLEEDHORN VOL 2 PG 471 SHOWS MONUMENT & 2659.8' TO NW CORNER OF SEC 11. USED CORNER TO SUBDIVIDE SECTION 11. HE SHOWS A DISTANCE OF 2673.66 TO THE W 1/4 COR OF SEC 11. SUNNY RECORDED DISTANCE IS 2689.70.
- 1976 BARNES VOL 5 PG 175 DUG AND FOUND NOTHING. DECLARED CORNER LOST & PLACED BY SINGLE PROPORTIONATE MEASUREMENT. 2644.17' TO NW CORNER OF SEC 11 & 2644.17 TO NE CORNER OF SEC 11.
- 1989 BARNES E-19 WHILE STH 26 WAS BEING RECONSTRUCTED, I DUG A VERY LARGE HOLE ON LINE WITH THE E/W FENCES AND WEST OF THE PREVIOUS EXCAVATION. I DID NOT FIND THE CUT LIMESTONE. UNDER THE PAVEMENT THERE WAS NO TOP SOIL. THERE WAS PURE SAND IN THE ENTIRE HOLE. ACCEPTED CORNER THAT I PLACED IN 1976. DRAWING CALLS FOR FD ALUM. MON BROKE TOP HALF OFF ON EAST PVMT EDGE. SHOWS EXCAVATION AREA GOING FROM EAST PVMT EDGE WESTERLY 16' AND 3' NORTH & SOUTH OF MON.

C) Was the corner restored through acceptance of (1) an obliterated evidence location, or, (2) a found perpetuated location?

FD WIDOT DISK IN CONC. & REFERENCED SAME. STH 26 MAJOR RELOCATION PROJECT WILL DESTROY THE MONUMENT.

D) Describe any material discrepancy between the location of the corner as restored or reestablished and the location of that corner as previously restored or reestablished by distance and direction. Show the discrepancy on the plan view drawing under (a), above. Show the distances between the corner as previously restored or reestablished and (1) the corner as restored or reestablished, and (2) to at least 4 of the witness monuments shown on the drawing in (a), above.

(E) Was the corner reestablished through lost corner proportionate methods? If so, show the method, including the directions and distances to other public land survey corners used as evidence or used for proportioning the corner location.

I, **Donald Barnes**, hereby certify that the corner location as identified by the corner code index was determined by me under my direction and control and that this U.S. Public Land Survey Monument Record is correct and complete to the best of my knowledge and belief.

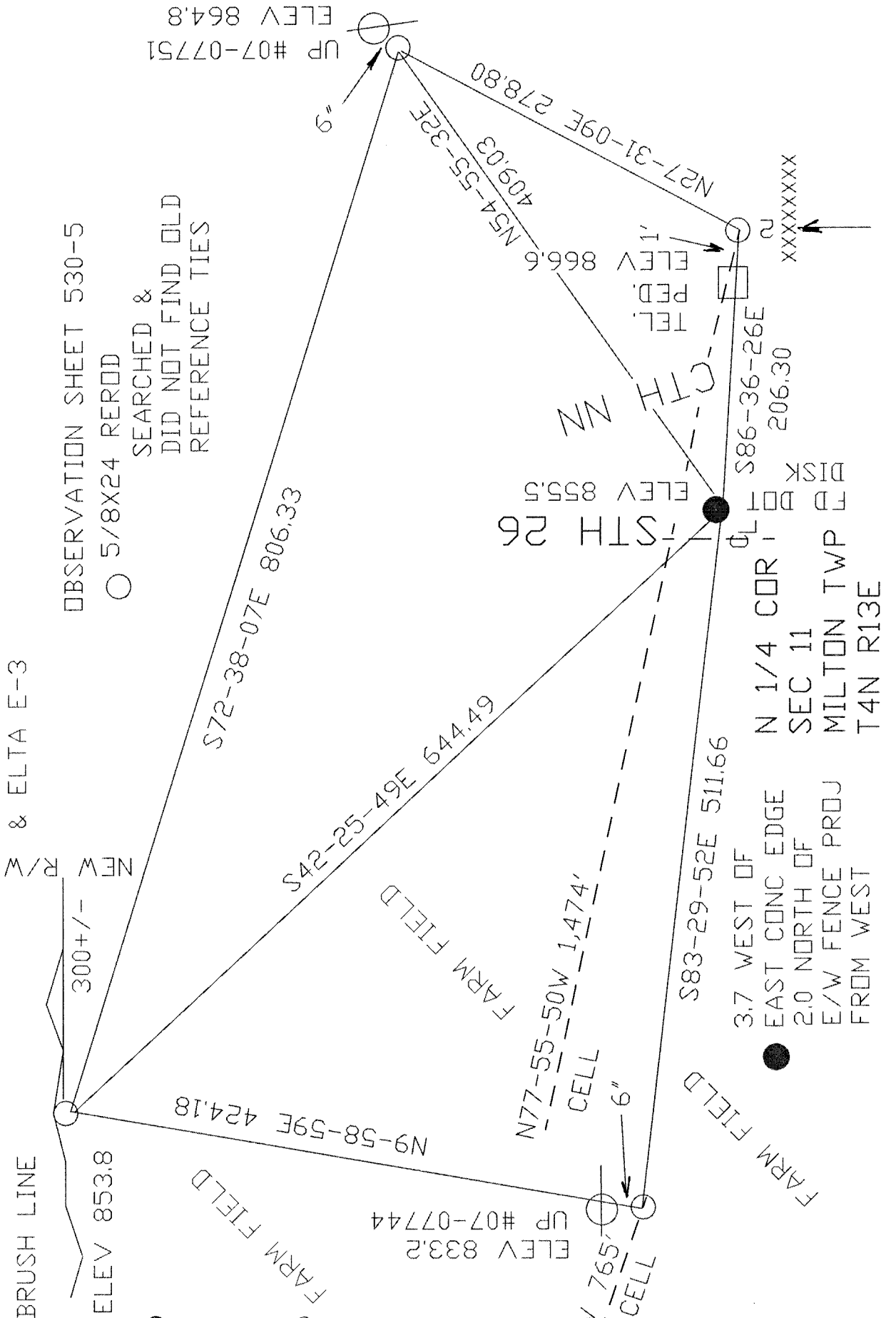
*Donald Barnes*  
May 18, 2012

SHEET 1 OF 2

CORNER CODE E-19 (1)

A.E. 7.08 REQUIREMENT

ELEV BASED ON PHOTO  
& ELTA E-3



*Dr. Baucus*  
May 18, 2012

SHEET 2 OF 2  
E-19(1)