

PUBLIC LAND SURVEY MONUMENT RECORD

For Public Land Survey Corners in the

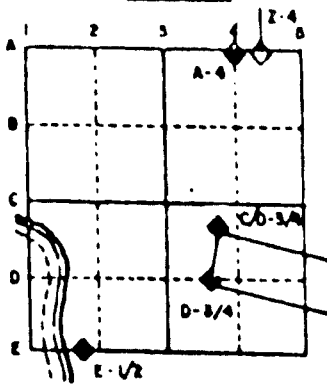
T. 1N., R. 13E.

CORNER CODE INDEX

	1	2	3	4	5	6	7	8	9	10	11	12	13	14	15	16	17	18	19	20	21	22	23	24	25
A																									
B																									
C																									
D																									
E																									
F																									
G																									
H																									
I																									
J																									
K																									
L																									
M																									
N																									
O																									
P																									
Q																									
R																									
S																									
T																									
U																									
V																									
W																									
X																									
Y																									
Z																									

PLACE MONUMENT SYMBOL (●) AT PROPER LOCATION ON ABOVE INDEX

EXAMPLE



TURTLE TWP  
ROCK COUNTY WI

IF AVAILABLE  
STATE PLANE COORDINATES

North (Y) 216,594.22 Elev. (Z) \_\_\_\_\_

East (X) 517,294.72 Zone \_\_\_\_\_

Hor. Datum COUNTY Vert. Datum \_\_\_\_\_

◆ CORNER MONUMENT

○ WITNESS MONUMENT

BEARINGS ARE BASED ON:

SHEET 1 OF 2

CORNER CODE:

117(1)

TU569

(B) Describe any record evidence, monument evidence, occupational evidence, testimonial evidence or any other material evidence you considered, and whether the monument was found or placed.

1836 LYON SET POST CORNER TO SECTIONS 14,15,22,&23. BUR OAK 18 S27W 32' & BUR OAK 12 S33 1/2E 95'. CALLS FOR 2653.2' TO S 1/4 COR SEC 14 & 2634.72' TO S 1/4 COR SEC 15.

1971 LEE VOL 4 PG 548 FOUND 5/8" IRON PIN SET BY SHIMEALL. SET IN ITS PLACE A CAST IRON HARRISON MONUMENT & REFERENCED SAME. CALLS FOR 2661.24 TO S 1/4 COR SEC 14 & 2646.68 TO W 1/4 COR SEC 14.

1972 LEE VOL 4 PG 585 FOUND CAST IRON MONUMENT. CALLS FOR 2657.74 TO N 1/4 COR SEC 22, 2651.27 TO E 1/4 COR SEC 22, & AN ANGLE OF 91-28-02 FROM E 1/4 COR TO N 1/4 CORNERS OF SEC 22.

FOUND CAST IRON MONUMENT AND REFERENCE PIPES. 2651.27 (REC 2651.30) TO E 1/4 COR SEC 22, 2657.64 (REC 2657.74) TO N 1/4 COR SEC 22, 2661.43 (REC 2661.24) TO S 1/4 COR SEC 14, 2646.62 (REC 2646.68) TO W 1/4 COR SEC 14, & AN ANGLE OF 91-28-30 (REC 91-28-02) FROM E 1/4 COR SEC 22 TO N 1/4 COR SEC 22.

C) Was the corner restored through acceptance of (1) an obliterated evidence location, or, (2) a found perpetuated location?

ACCEPTED FOUND PERPETUATED LOCATION.

D) Describe any material discrepancy between the location of the corner as restored or reestablished and the location of that corner as previously restored or reestablished by distance and direction. Show the discrepancy on the plan view drawing under (a), above. Show the distances between the corner as previously restored or reestablished and (1) the corner as restored or reestablished, and (2) to at least 4 of the witness monuments shown on the drawing in (a), above.

(E) Was the corner reestablished through lost corner proportionate methods? If so, show the method, including the directions and distances to other public land survey corners used as evidence or used for proportioning the corner location.

NO

I, Donald Barnes, hereby certify that the corner points as identified by the corner code index were, in a field survey on, 1994, established, re-established, monumented, re-monumented, recovered or restored as expressed below and in conformance with the regulations and rules as required in the current manual of survey instructions of the United States Department of Interior, Bureau of Land Management.

COUNTY SURVEYOR FILING DATA

Date of computer entry \_\_\_\_\_

Date microfilmed \_\_\_\_\_

Number of included sheets \_\_\_\_\_

CORNER CODE

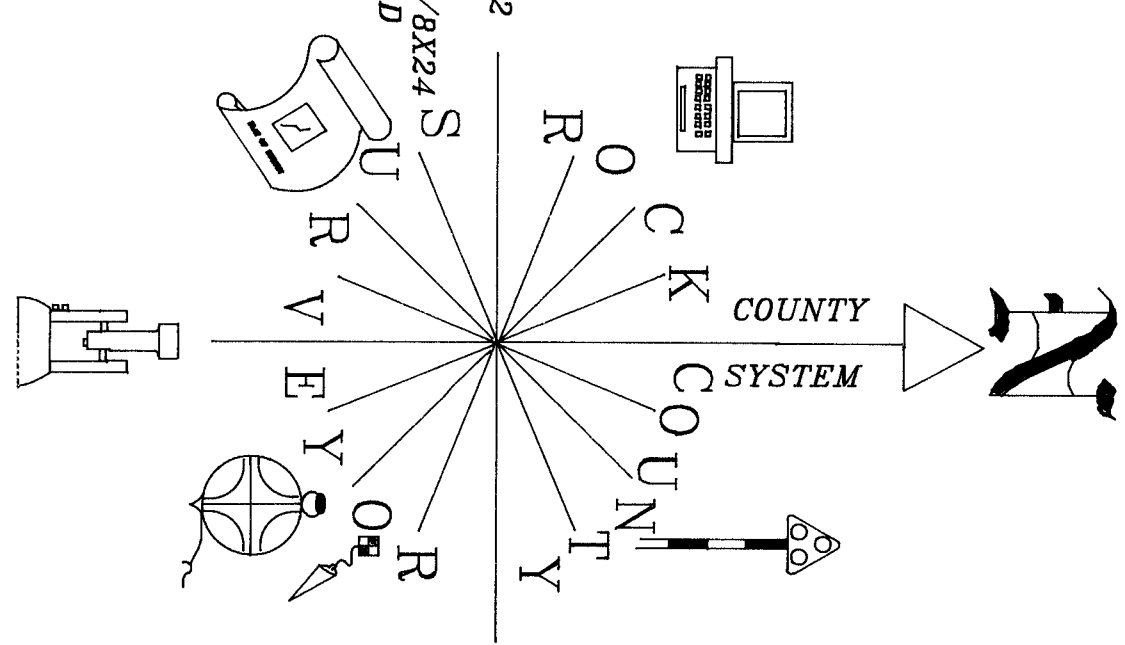
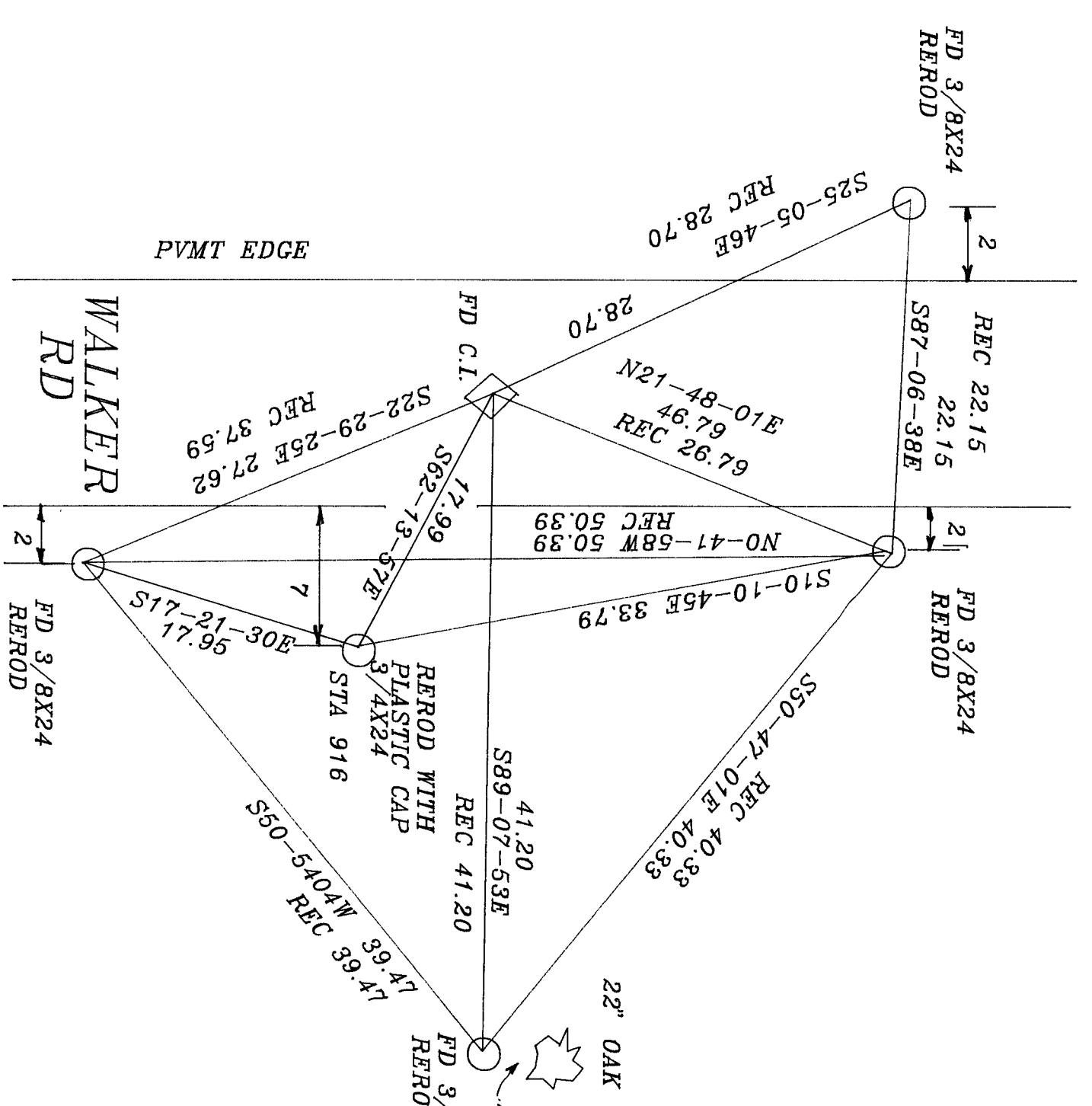
seal 6/13/95

*Donald Barnes*

EMBOSS LAND SURVEYOR SEAL

A-E 7.08 REQUIREMENT

17(1)



*Donald J. Barnes*  
6/12/95