

# U.S. PUBLIC LAND SURVEY MONUMENT RECORD

For Public Land Survey Corners In:  
T. / N. R. 13 E. 4th P.M.  
CORNER CODE INDEX

WI ADMINISTRATIVE CODE A-E 7.08 REQUIREMENT  
REV 10/23/2004 USMONREC.DWG

1	2	3	4	5	6	7	8	9	10	11	12	13	14	15	16	17	18	19	20	21	22	23	24	25	
A																									A
B	6					5				4				3			2						1		B
C																									C
D																									D
E																									E
F																									F
G	7					8				9			10			11						12			G
H																									H
J																									J
K	18					17				16			15			14						13			K
L																									L
M																									M
N																									N
O																									O
P	19					20				21			22			23						24			P
Q																									Q
R																									R
S																									S
T	30					29				28			27			26						25			T
U																									U
V																									V
W																									W
X	31					32				33			34			35						36			X
Y																									Y
Z																									Z

TURTLE TWP  
ROCK COUNTY WI

IF AVAILABLE  
ROCK COUNTY COORDINATES PREFERRED

North \_\_\_\_\_ Elev. \_\_\_\_\_

East \_\_\_\_\_

Hor. Datum \_\_\_\_\_ Vert. Datum \_\_\_\_\_

LATITUDE \_\_\_\_\_ ELLIPS. HT. \_\_\_\_\_

LONGITUDE \_\_\_\_\_

NAD83(91) \_\_\_\_\_ NETWORK ADJ. YR \_\_\_\_\_

GPS (X) \_\_\_\_\_ TRAVERSE (X) \_\_\_\_\_

BASED ON THE FOLLOWING CONTROL:

PLACE MONUMENT SYMBOL  AT PROPER LOCATION ON ABOVE INDEX

CORNER MONUMENT

WITNESS MONUMENT

BEARINGS ARE BASED ON: (a) \_\_\_\_\_

1549 OBSERVATION

FIELD BOOK \_\_\_\_\_ PAGE # \_\_\_\_\_

SHEET 1 OF 4

SHOW A PLAN VIEW DRAWING DEPICTING THE CORNER MONUMENT AND SURROUNDING PHYSICAL FEATURES, INCLUDING THE EXCAVATION AREA AND DEPTH.

PLANNING & ZONING COMMITTEE ADOPTED THIS FORM ON 12/2/1982

CORNER CODE 517(1)

TU549

(B) Describe any record evidence, monument evidence, occupational evidence, testimonial evidence or any other material evidence you considered, and whether the monument was found or placed.

- 1833 LYON (ORSON) DEC NORTH BET. 14 & 15
- 2640 QUARTER SEC COR. { BURR O 14 S43E 18.48' BURR O. 15.84' S70W 52.8' } {BURR O 14 BURR O 15.84'} MARKED
- 2665.08 BURR O. 14
- 3399 BURR O 14
- 4488 LEFT TIMBER & ENTER MARSH
- 4917 BROOK 33' SE
- 5280 COR TO SECS SECTIONS 10,11,14,&15. POST & MOUND OF TUSSACS??? LAND S 1/2 ON S 1/2 AS BEFORE IN NORTH 1/2 LEVEL & WET 3<sup>RD</sup> RATE.
- EAST ON RAND. BET. 11 & 14
- 693 BROOK 13.2' SE
- 1650 LEFT MARSH & ENTER TIMBER
- 2178 LEFT TIMBER & ENTER MARSH
- 2640 TEMPY 1/4 P
- 3168 LEFT MARSH & ENTER TIMBER
- 5302.44 INT. E BDY 36.96' N OF P  
LAND LEVEL & WET 2<sup>ND</sup> RATE TIMBER BURR & RED O.  
WEST COR. WEST
- 2651.22 QUARTER SEC COR. {BURR O 26 S33E 610.5'} {BURR O 17.16'} MARKED
- 5302.44 SEC COR.  
NORTH BET SECS 10 & 11
- 2640 QUARTER SEC COR POST & RAISED MOUND
- 5280 COR TO SECS 2,3,10,11 NEAR THE SOUTHERN EDGE OF DRY PRAIRIE. SET POST & RAISED MOUND DEC 22<sup>ND</sup>
- EAST ON RAND BET. 10 & 15
- 330 LEFT TIMBER & ENTER MARSH
- 1980 LEFT MARSH & ENTER SCATTERING TIMBER
- 2640 TEMPY 1/4 SEC COR
- 3036 LEFT TIMBER & ENTER MARSH
- 4422 BOOK 7.92' CRS SE
- 5016 BROOK 19.8' CRS SE
- 5242.38 INT. E BDY 38.28' N O P  
LAND LEVEL & WET 3<sup>RD</sup> RATE BEING MOSTLY BOTTOM ADJACENT TO CREEKS  
WEST COR WEST
- 2621.19 QUARTER SEC COR {BURR O 12 S32E 26.4' BUR O 13 S66W 77.22'} {BURR O 12 BURR O 13} MARKED
- 5242.38 SEC COR
- 1854 McVEAN VOL 1 PG 25 2650.89 TO W 1/4 COR SEC 14 & 2654.52 TO N 1/4 COR SEC 14.
- 1864 LOCKE VOL 1 PG 204 FOUND STUMPS OF BTS & OLD STAKE. SET LARGE BR OAK STAKE IN CENTER OF HEAP OF LIMESTONES. SMALL POPLAR ABOUT 3" E-SE OF STAKE. 2654.52 VAR 5-00 TO S 1/4 COR SEC 10 & 2649.24 VAR 6-55 TO E 1/4 COR SEC 10.
- 1864 LOCKE VOL 1 PG 207 SEE SEC 10 2642.64 VAR 5-37 TO S 1/4 COR SEC 11.

SHEET 1 OF 4

CORNER CODE J-17(1)

2-07-06  
Donald Barnes

TU549

- 1970 BATTERMAN VOL 4 PG 475 FOUND LIMESTONE AT CORNER. SET  
CONC. MON. WITH BRASS CAP.
- 1971 LEE VOL 4 PG 548 2658.83 TO N 1/4 COR SEC 14, 2649.19 TO W 1/4  
COR SEC 14, & AN ANGLE OF 89-24-24 AT NW COR SEC 14 FROM  
THE N 1/4 TO W 1/4 CORNERS OF SEC 14.
- 1973 LEE MAP #04738 CONC. MON. S88-41-12E 2658.83 TO A PIN @ N  
1/4 COR SEC 14, & S00-04-12W 2648.16 TO PIN @ W 1/4 COR SEC  
14
- 1974 WI DOT R/W MAP CONCRETE MONUMENT. NAD 27 203,459.96;  
2,287,385.05. MAP #12550 PROJECT 1093-2-85, 1093-1-21.  
(4/16/73), & 1093-2-22 (3/8/74)
- 1995 BARNES J-17 FD 1 1/2" PIPE. ACCEPTED FOUND PERPETUATED  
LOCATION
- 1999 COMBS CSM VOL 23 PG 216 FD IP 2659.14 TO C.I. @ S 1/4 COR SEC  
11

FD DISK IN CONC. MON. , 1 1/2" IRON PIPE, & CARSONITE POST.

*C) Was the corner restored through acceptance of (1) an obliterated evidence location, or, (2) a found perpetuated location?*

ACCEPTED FD CONC. MON.

*D) Describe any material discrepancy between the location of the corner as restored or reestablished and the location of that corner as previously restored or reestablished by distance and direction. Show the discrepancy on the plan view drawing under (a), above. Show the distances between the corner as previously restored or reestablished and (1) the corner as restored or reestablished, and (2) to at least 4 of the witness monuments shown on the drawing in (a), above.*

I DID NOT FIND A RECORD OF THE IRON PIPE IN THE COUNTY SURVEYOR'S RECORDS OTHER THAN J-17 AND COMB'S 1999 CSM.

*Donald Barnes*

2-07-06

SHEET 2 OF 4  
CORNER CODE J-17

TU549

THE FOLLOWING ARE RECORD OBSERVATIONS:

NE COR SEC 15 TO N ¼ COR SEC 15

2006 ADJUSTMENT N88-07-52W	2666.97	CONC @ NW COR 14
1990 BARNES N88-07-33W	2666.59	1 ½" IP @ NW COR 14
1864 LOCKE VOL 1 PG 20	2654.52	

W ¼ COR SEC 11 TO SW COR SEC 11

2006 ADJUSTMENT S00-08-28W	2656.70	CONC @ NW COR 14
1995 BARNES S00-08-59W	2656.93	1 ½" IP @ NW COR 14
1864 LOCKE VOL 1 PG 204	2649.24	

NW COR SEC 14 TO N ¼ COR SEC 14

2006 ADJUSTMENT S88-28-50E	2658.91	CONC @ NW COR 14
1999 COMBS GSM VOL 23 PG 216	2659.14	1 ½" IP @ NW COR 14
1995 BARNES S88-29-09E	2659.30	1 ½" IP @ NW COR 14
1973 LEE #4738	2658.83	
1971 LEE VOL 4 PG 548	2658.83	
1864 LOCKE VOL 1 PG 257	2642.64	STAKE SURR. HEAP LS
1854 MC VEAN VOL 1 PG 25	2654.52	

NE COR SEC 15 TO E ¼ COR SEC 15

2006 ADJUSTMENT S00-55-17W	2648.37	CONC @ NW COR 14
1995 BARNES S00-54-47W	2648.14	1 ½" IP @ NW COR 14
1973 LEE #4738	2648.16	
1971 LEE VOL 4 PG 548	2648.19	
1854 MC VEAN VOL 1 PG 25	2650.89	

ANGLE @ NW COR SEC 14 FROM N ¼ COR SEC 14 TO W ¼ COR SEC 14

2006 ADJUSTMENT	89-24-08	@ CONC. @ NW COR 14
1995 BARNES	89-23-56	@ 1 ½" IP @ NW COR 14
1971 LEE	89-24-24	@ CONC. @ NW COR 14

(E) Was the corner reestablished through lost corner proportionate methods? If so, show the method, including the directions and distances to other public land survey corners used as evidence or used for proportioning the corner location.

NO

I, **Donald Barnes**, hereby certify that the corner location as identified by the corner code index was determined by me under my direction and control and that this U.S. Public Land Survey Monument Record is correct and complete to the best of my knowledge and belief.

Seal

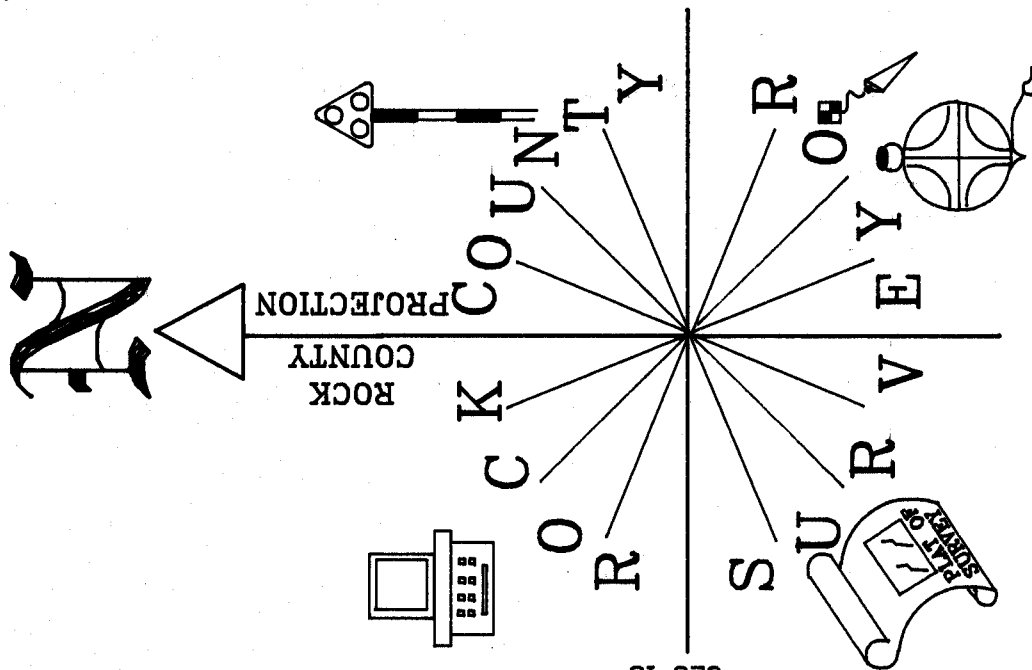
Emboss

SHEET 3 OF 4

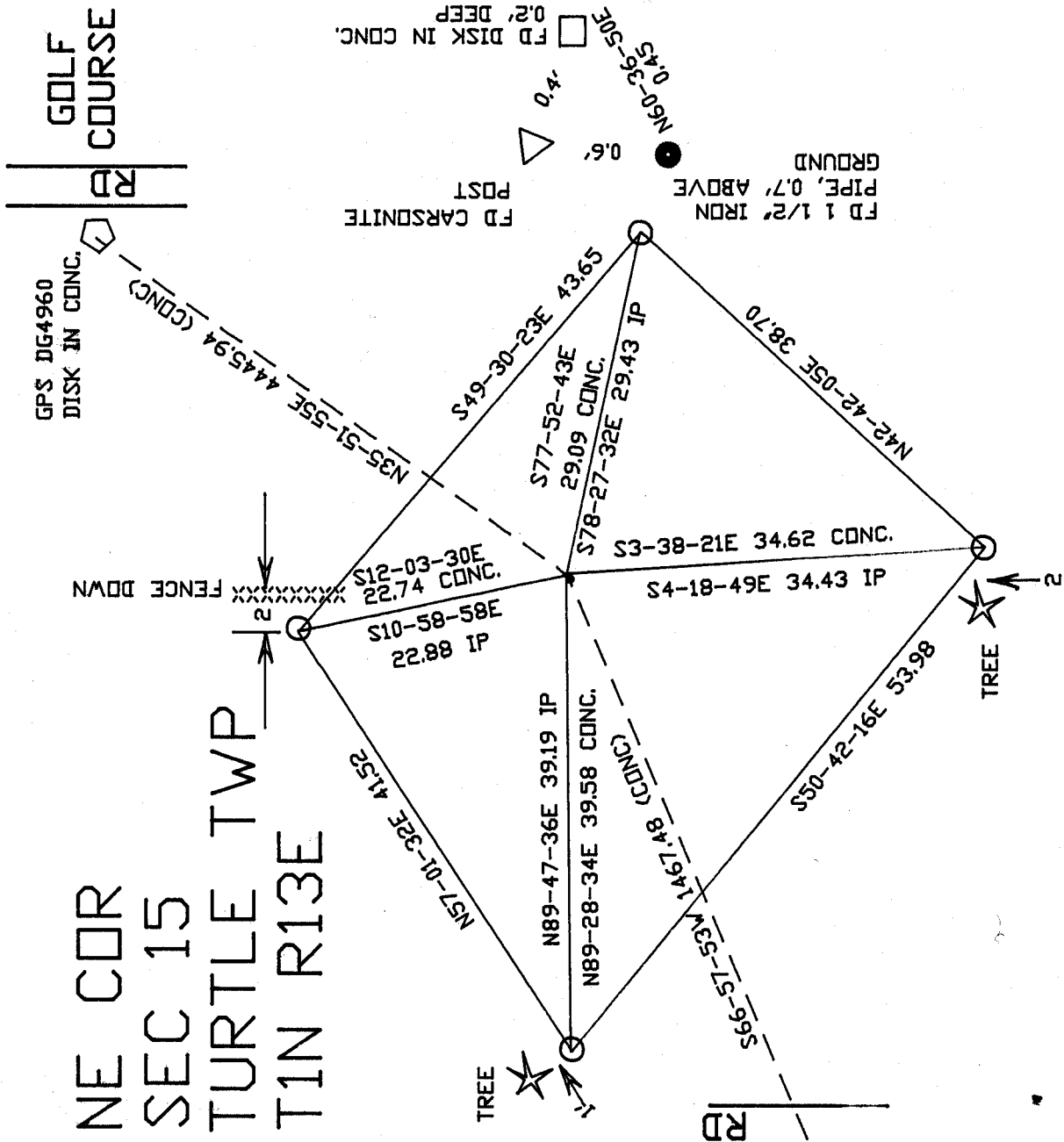
CORNER CODE **J-17(1)**

A.E. 7.08 REQUIREMENT

*Donald Barnes*  
2-07-06



NOT TO SCALE  
 O 3/4x24" RERODD/CAP  
 OBSERVATIONS SHEET 1549T



NE COR  
 SEC 15  
 TURTLE TWP  
 TIN R13E

GOLF COURSE  
 RD  
 GPS DG4960  
 DISK IN CONG.

EMBOSSED SEAL

*Donald Baer*

2-07-06

STA #875T 3/4"  
 RERODD, 3.5" WEST  
 OF WEST PWTM EDGE

J-17 (1)

4 OF 4 SHEETS