

U.S. PUBLIC LAND AND SURVEY MONUMENT RECORD

For Public Land Survey Corners in the

T. 1 N., R. 13 E

CORNER CODE INDEX

TURTLE TWP

ROCK COUNTY WI

A	1	2	3	4	5	6	7	8	9	10	11	12	13	14	15	16	17	18	19	20	21	22	23	24	25	26	27	28	29	30	31	32	33	34	35	36				
B																																								
C																																								
D																																								
E																																								
F																																								
G																																								
H																																								
I																																								
J																																								
K																																								
L																																								
M																																								
N																																								
O																																								
P																																								
Q																																								
R																																								
S																																								
T																																								
U																																								
V																																								
W																																								
X																																								
Y																																								
Z																																								

IF AVAILABLE
ROCK COUNTY COORDINATES REFERRED


North _____ Elev. _____


East _____

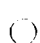
Hor. Datum _____ Vert. Datum _____

GPS (x) _____ TRAVERSE (x) _____

BASED ON THE FOLLOWING CONTROL:

PLACE MONUMENT SYMBOL  AT PROPER LOCATION ON ABOVE INDEX

 CORNER MONUMENT

 WITNESS MONUMENT

(a)

BEARINGS ARE BASED ON:

FIELD BOOK _____ PAGE # _____

SHOW A PLAN VIEW DRAWING DEPICTING THE CORNER MONUMENT AND SURROUNDING PHYSICAL FEATURES, INCLUDING THE EXCAVATION AREA AND DEPTH. THE CORNER MONUMENT SHALL HAVE THE FOLLOWING CHARACTERISTICS: 1) HAVE A LEAST TWO PREDETERMINED BREAK-OFF POINTS. 2) IF BROKEN LEAVE A PERMANENTLY MAGNETIZED REMAINT AT THE ORIGINAL POINT. 3) MUST BE EXTENDABLE. 4) THE CAP IS INSCRIBED "ROCK COUNTY SURVEY MONUMENT - PENALTY FOR DISTURBING MARKER". 5) OR AN EXISTING CUT LIMESTONE, AN IRON PIPE 1 1/2" MINIMUM MAY BE USED IN AREAS WHERE GROUND WATER IS WITHIN ONE FOOT OF THE SURFACE. IF THE CORNER IS OCCUPIED BY AN IMPROVEMENT (MANHOLE, BURIED CABLE, ETC) AN DURABLE, DISTINCT MONUMENT MAY BE USED. CORNERS SHALL BE REFERENCED WITH AT LEAST 4 DURABLE WITNESS MONUMENTS. WITNESS MONUMENTS SHALL BE MADE OF CONCRETE, HAUTAL STONE, IRON OR OTHER EQUALLY DURABLE MATERIAL EXCEPT WOOD. DESCRIBE THE CORNER AND THE WITNESS MONUMENTS.

PLANNING & ZONING COMMITTEE ADOPTED THE ABOVE FORM ON 12/2/1982
WI ADMINISTRATIVE CODE A-E 7.08 REQUIREMENT

SHEET 1 OF 2

CORNER CODE

217(1)

(B) Describe any record evidence, monument evidence, occupational evidence, testimonial evidence or any other material evidence you considered, and whether the monument was found or placed.

- 1833 LYONS ORIGINAL SURVEY. SET A POST ON A RIDGE FUNNING E&W FOR CORNER TO SEC 34 & 35. BUR OAK 20 N65W 90.42; BUR OAK 18 N48E 186.78. CALSS FOR 2640 TO S 1/4 COR SECTIONS 34 & 35.
- 1838 ILLINOIS ORIGINAL GOVERNMENT PLAT. CORNER SHOWN TO BE 1758.9 WEST OF THE SE CORNER OF SEC 34. CALLS FOR A VAR OF 5-5.
- 1978 BARNES VOL 5 PG 461 DUG & FOUND NOTHING. INSTALLED ALUM. MON. 1' DEEP ON LINE WITH NE CORNER SEC 1 T46N R2E AND S 1/4 COR OF SECTION 36 AT SINGLE PROPORTIONATE DISTANCE.
- 1978 BARNES VOL 5 PG 456 CALLS FOR 1788.05 TO NE CORNER OF SECTION 1 T46N R2E AND 2642.90.
- 1991 BARNES FOUND REROD THAT THE BATTERMAN COMPANY INSTALLED FROM TIES A FEW WEEKS AGO.

FOUND REROD AND TIES. 1788.07 (REC 1758.9') EAST OF THE NW COR SEC 6 T46N R3E.

C) Was the corner restored through acceptance of (1) an obliterated evidence location, or, (2) a found perpetuated location?
ACCEPTED FOUND REROD.

D) Describe any material discrepancy between the location of the corner as restored or reestablished and the location of that corner as previously restored or reestablished by distance and direction. Show the discrepancy on the plan view drawing under (a), above. Show the distances between the corner as previously restored or reestablished and (1) the corner as restored or reestablished, and (2) to at least 4 of the witness monuments shown on the drawing in (a), above.
THE ALUM MON WAS INCORRECTLY PLACED DUE TO A BLUNDER IN A FIELD ANGLE IN THE INSTALLATION OF THE ALUM. MON.

(E) Was the corner reestablished through lost corner proportionate methods? If so, show the method, including the directions and distances to other public land survey corners used as evidence or used for proportioning the corner location.
NO

I, Donald Barnes, hereby certify that the corner points as identified by the corner code index were, in a field survey on, 1994, established, re-established, monumented, re-monumented, recovered or restored as expressed below and in conformance with the regulations and rules as required in the current manual of survey instructions of the United States Department of Interior, Bureau of Land Management.

seal
Donald Barnes
7/12/95

COUNTY SURVEYOR FILING DATA

Date of computer entry _____

Date microfilmed _____

Number of included sheets _____

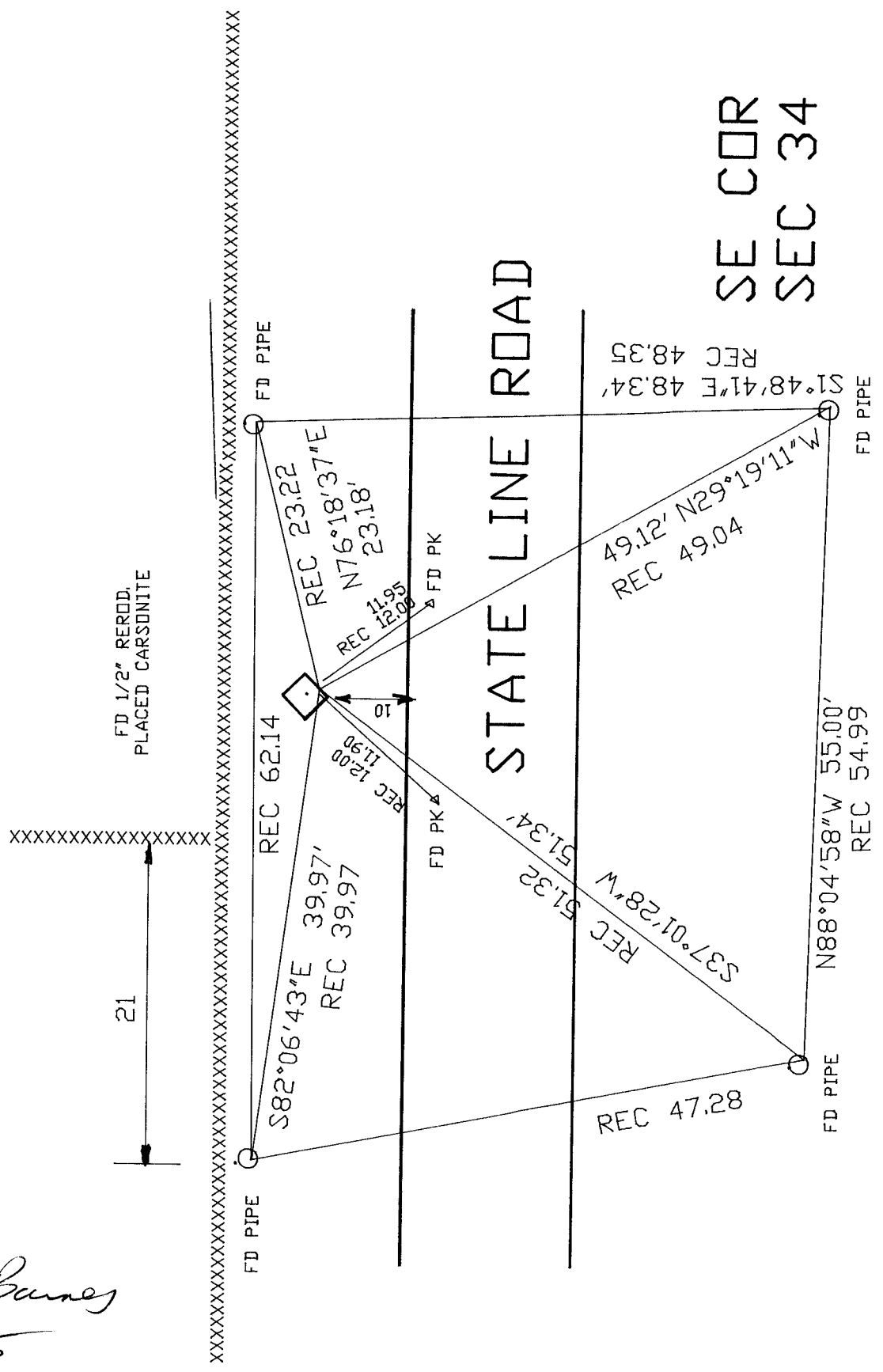
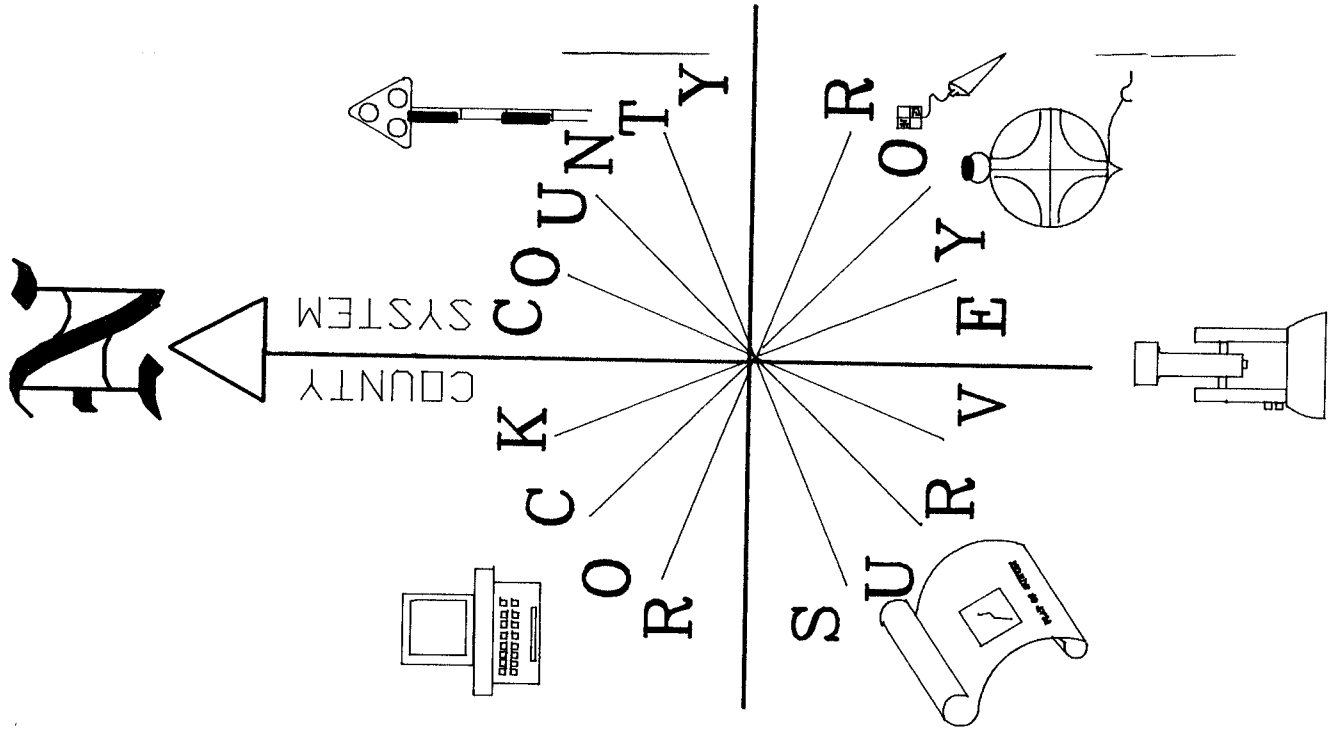
CORNER CODE

EMBOSS LAND SURVEYOR SEAL

A-E 7.08 REQUIREMENT

217(1)

Donald Barnes
7/12/95



SE COR
SEC 34

FB#1 PG 66

Z 17(1)