

U.S. PUBLIC LAND SURVEY MONUMENT RECORD

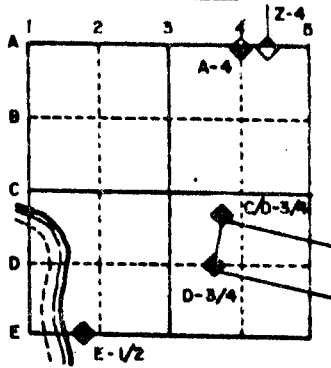
For Public Land Survey Corners in the
T. 4 N., R. 13 E.

CORNER CODE INDEX

	1	2	3	4	5	6	7	8	9	10	11	12	13	14	15	16	17	18	19	20	21	22	23	24	25
A																									
B																									
C	6																								
D		5																							
E			4																						
F				3																					
G					2																				
H																									
I																									
J	7																								
K		8																							
L			9																						
M				10																					
N					11																				
O						12																			
P																									
Q																									
R																									
S																									
T	18																								
U		17																							
V			16																						
W				15																					
X					14																				
Y						13																			
Z							12																		
								11																	
									10																
										9															
											8														
												7													
													6												
														5											
															4										
																3									
																	2								
																		1							

PLACE MONUMENT SYMBOL (◆) AT PROPER LOCATION ON ABOVE INDEX

EXAMPLE



MILTON TWP
ROCK COUNTY WI

IF AVAILABLE
STATE PLANE COORDINATES

North (Y) _____ Eleve. (Z) _____
 East (X) _____ Zone _____
 Hor. Datum _____ Vert. Datum _____

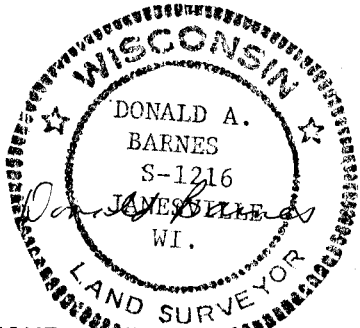
e.)

◆ CORNER MONUMENT

○ WITNESS MONUMENT

I, Donald Barnes, hereby certify that the corner points as identified by the corner code index were, in a field survey on, Aug 1 1989, established, re-established, monumented, re-monumented, recovered or restored as expressed below and in conformance with the regulations and rules as required in the current manual of survey instructions of the United States Department of Interior, Bureau of Land Management.

BEARINGS ARE BASED ON:



AFFIX YOUR LAND SURVEYOR SEAL

COUNTY SURVEYOR FILING DATA

Date of computer entry _____

Date microfilmed _____

Number of included sheets _____



MICROFILMED

SHEET 1 OF 3

CORNER CODE: T 17 (1)

(B) Describe any record evidence, monument evidence, occupational evidence, testimonial evidence or any other material evidence you considered, and whether the monument was found or placed.

- 1871 RUGER REMONUMENTATION FIELD NOTES NORTH ON WEST LINE OF SW 1/4 OF SECTION 26 ON A VAR 7-10 OFFSET WEST 10 LKS OFFSET EAST 80 LKS OFFEST EAST 130 LKS AT 2647.92 INTERSECTED 1/4 LINE 210 LKS EAST OF COR. CORRECTED VAR 7-19. NORTH ON WEST LINE OF NW 1/4 OF SECTION 26 ON A VAR 7-10 AT 2649.08 INTERSECTED NORTH BOUNDARY 4.62' EAST OF CORNER. CORRECTED VAR 7-16. 2647.92 FROM SE COR & 2649.08 FROM NE CORNERS OF SECTION 27
- 1871 UNKNOWN VOL 5 PG 116 VAR 7-16 2649.08 TO NE COR SEC 27 & VAR 7-19 2647.92 TO SE COR SEC 27
- 19?? VOL 5 PG 493 SHOWS A DISTANCE OF 2650.2 TO THE NE COR SEC 27.
- 1880 LEE VOL 2 PG 302 FOUND STONE MON. USED TO LOCATE PROPERTY CORNERS TO THE NORTH. PLACED IRON PINS ON LINE WITH STONE MON AT THE NW COR OF SEC 26.
- 1895 BLEEDHORN VOL 6 PG 298 2650.72 TO CENTER OF SEC 26.
- 19?? VOL 5 PG 494 BJS OCT 17 FD 6X6 CUT STONE 1.4 BELOW GROUND. SET 1" IRON PIP ON TOP. NW 66.6 TO ELM, WNW 47 TO ELM, WSW 41.6 TO ELM, SW 53 TO ELM, SE 33 TO ELM. 1325.05 TO N 1/16 OF SW 1/4 OF SEC 26 WHICH IS AN IRON ROD THAT KERCH PLACED IN 1913. 1325.05 FROM 1/16TH COR TO CENTER OF SECTION. IN 1913 KERCH FOUND STONE THAT BLEEDHORN PLACED IN 1895 FOR THE CENTER OF SECTION. SHOWS AN ANGLE OF 1/16TH-W1/4 COR-SW COR OF SEC 26 87-06 5/8. CALLS FOR A.E. WHITFORD'S REFERENCES OF 49.1 TO W SIDEWALK, 24.7 E TO TEL POLE IN LINE WITH LARGE VASE IN CEMETERY ON 1/4 LINE.
- 19?? VOL 5 PG 495 SHOWS A DISTANCE OF 2650.2 TO THE NE CORNER OF SEC 27 AND AT THE W 1/4 CORNER OF SECTION 27 IS THE STATEMENT "ELY'S BOLT".
- 1932 SUNNY VOL 3 PG 218 FOUND 6"X6" CUT STONE MON. 1.4' BELOW SURFACE. SET 1" PIPE ON TOP. FENCE E. 2.5' N., E EDGE OF CONC. PAVMNT. S .26'W., W EDGE OF W. WALK 49.1 W., CEN OF 17" ELM N 62W=47.6', CEN OF 22" ELM S50W=53.8', CEN OF 26 ELM S30E=34.2'. SHOWS A DISTANCE OF 2650.2 TO THE NE COR SEC 27.
- 1983 NORTHROP VOL 6 PG 298 2651.46 TO CENTER OF SECTION 26, ANGLE SW COR 26-W 1/4 COR SEC 26-CENTER OF SEC 26 87-07-12, AND ANGLES 1/4 COR SEC 26-CENTER OF 26-W 1/4 COR SEC 26 92-56-03.
- 1983 BARNES T-17 FOUND PIPE AND REFERENCED SAME.

I FOUND A 1" PIPE AND REFERENCED SAME.

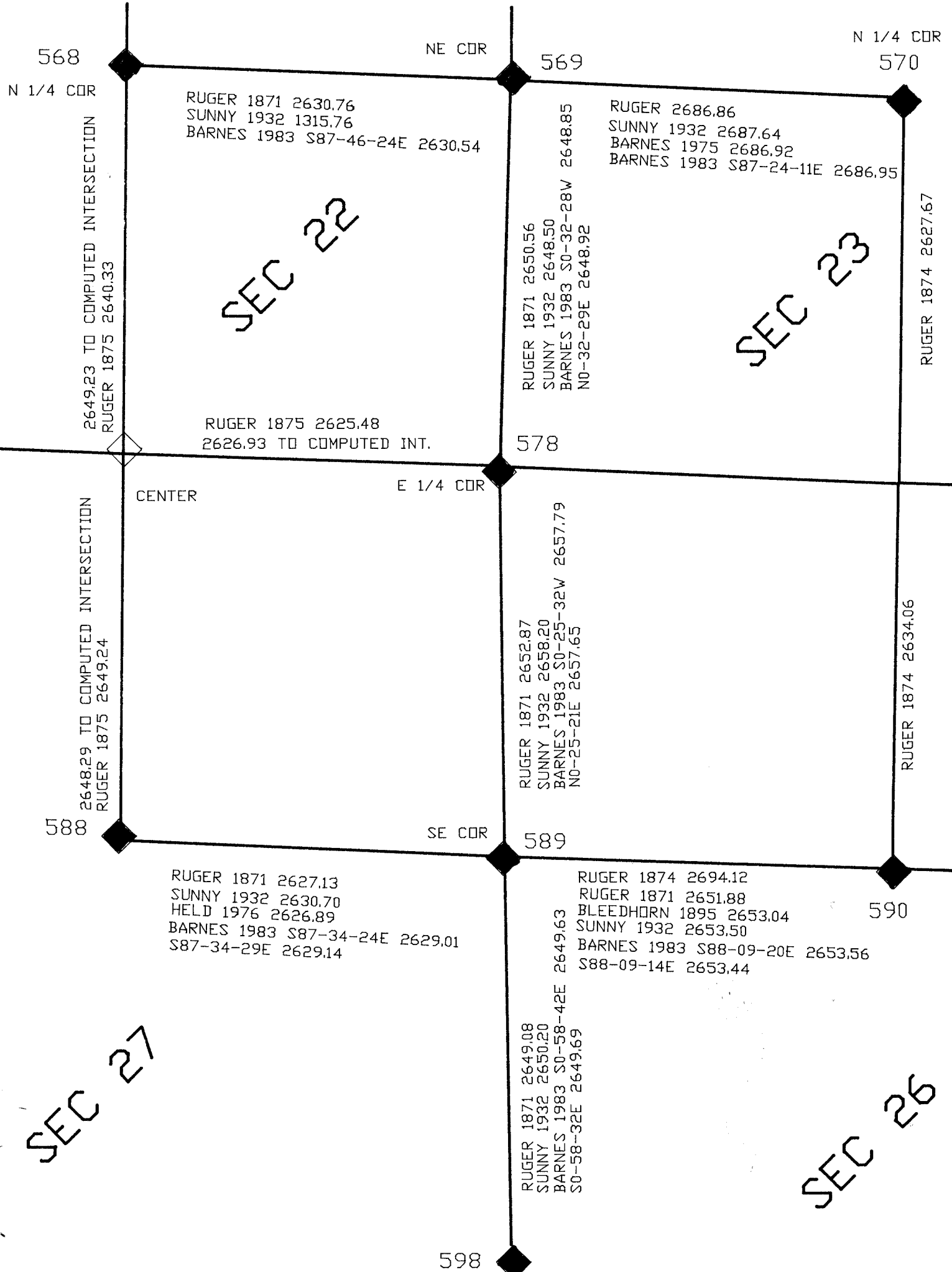
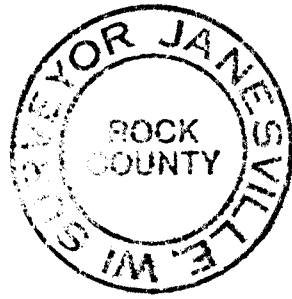
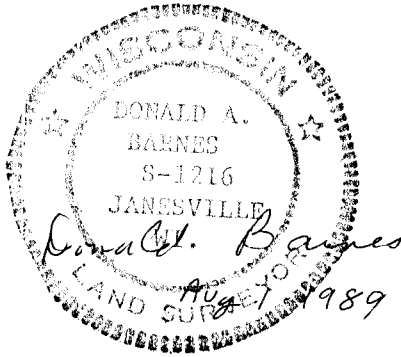
C) Was the corner restored through acceptance of (1) an *obliterated evidence location*, or, (2) a *found perpetuated location*?

ACCEPTED FOUND PERPETUATED LOCATION

D) Describe any material discrepancy between the location of the corner as restored or reestablished and the location of that corner as previously restored or reestablished by distance and direction. Show the discrepancy on the plan view drawing under (a), above. Show the distances between the corner as previously restored or reestablished and (1) the corner as restored or reestablished, and (2) to at least 4 of the witness monuments shown on the drawing in (a), above.

(E) Was the corner reestablished through lost corner proportionate methods? If so, show the method, including the directions and distances to other public land survey corners used as evidence or used for proportioning the corner location.

T 17(1)



U.S. PUBLIC LAND SURVEY MONUMENT RECORD

For Public Land Survey Corners in the

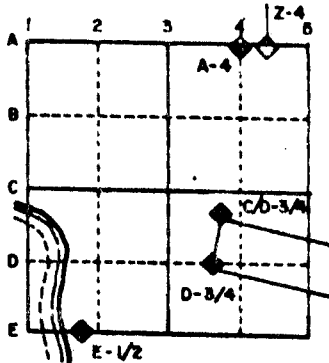
T. 4 N., R. 13 E.

CORNER CODE INDEX

	2	3	4	5	6	7	8	9	10	11	12	13	14	15	16	17	18	19	20	21	22	23	24	25	
A																									
B																									
C	6																								
D		5																							
E			4																						
F				3																					
G					2																				
H																									
I																									
J	7																								
K		8																							
L			9																						
M				10																					
N					11																				
O						12																			
P							13																		
Q								14																	
R									15																
S										16															
T											17														
U												18													
V													19												
W														20											
X															21										
Y																22									
Z																	23								
																		24							
																			25						
																				26					
																					27				
																						28			
																							29		
																								30	
																									31
																									32
																									33
																									34
																									35
																									36

PLACE MONUMENT SYMBOL (◆) AT PROPER LOCATION ON ABOVE INDEX

EXAMPLE



MILTON TWP
ROCK COUNTY WI

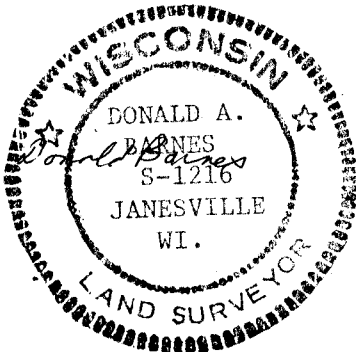
IF AVAILABLE
STATE PLANE COORDINATES

North (Y) _____ Eleve. (Z) _____
 East (X) _____ Zone _____
 Hor. Datum _____ Vert. Datum _____

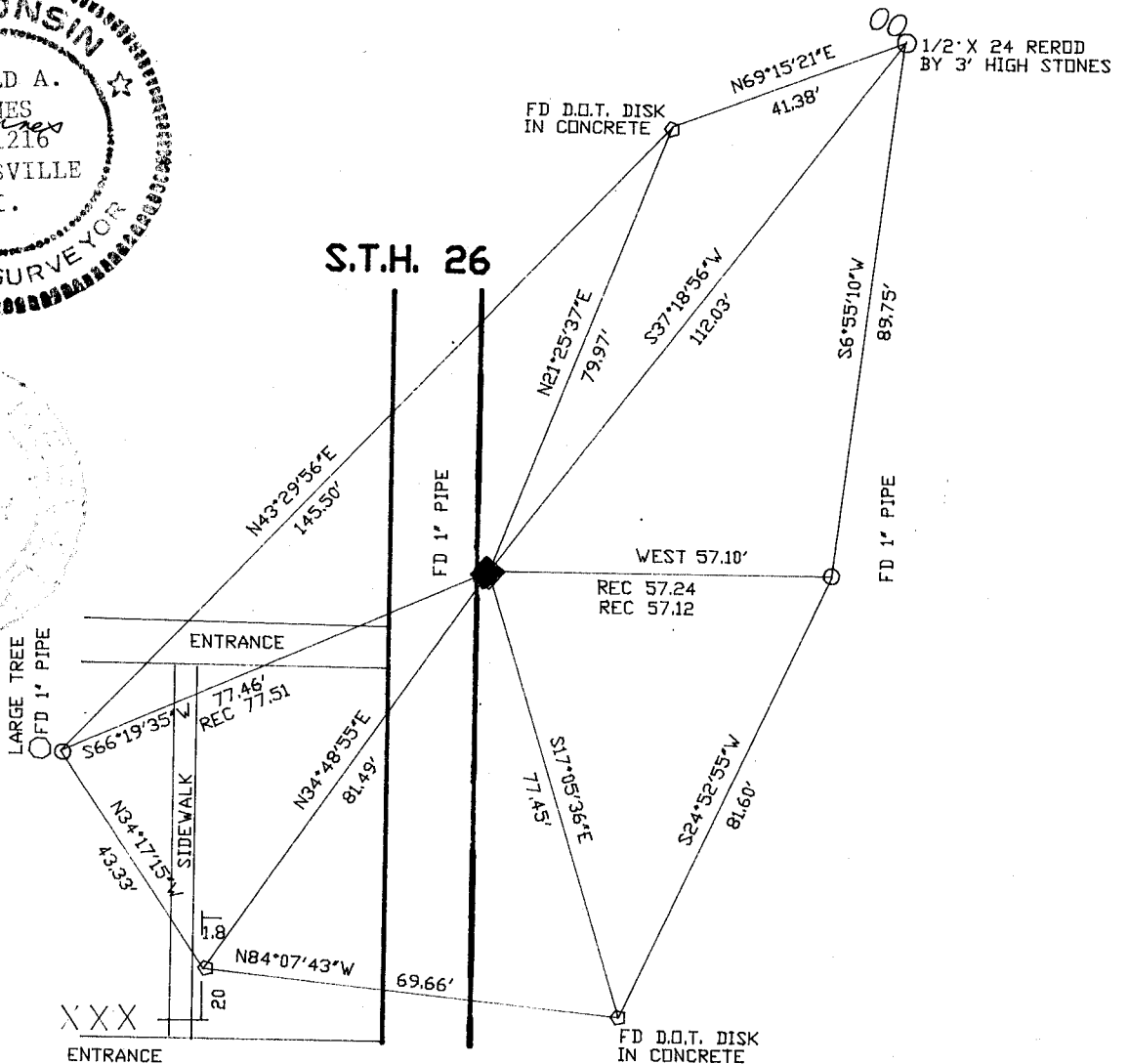
a.)

◆ CORNER MONUMENT

○ WITNESS MONUMENT



BEARINGS ARE BASED ON:



ALL FILMED