

U.S. PUBLIC LAND SURVEY MONUMENT RECORD

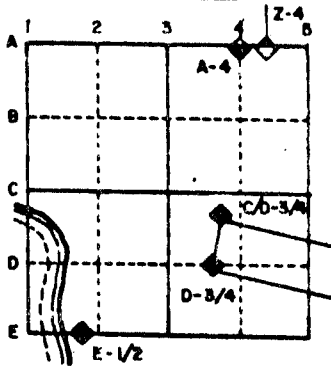
For Public Land Survey Corners in the
T. 4 N., R. 13 E.

CORNER CODE INDEX

	1	2	3	4	5	6	7	8	9	10	11	12	13	14	15	16	17	18	19	20	21	22	23	24	25					
A																														
B																														
C	6																													
D		5																												
E			4																											
F				3																										
G					2																									
H																														
I																														
J																														
K	7																													
L		8																												
M			9																											
N				10																										
O					11																									
P						12																								
Q							13																							
R								14																						
S									15																					
T										16																				
U											17																			
V												18																		
W													19																	
X														20																
Y															21															
Z																22														
																	23													
																		24												
																			25											
																				26										
																					27									
																						28								
																							29							
																								30						
																									31					
																										32				
																											33			
																												34		
																													35	
																														36

PLACE MONUMENT SYMBOL (◆) AT PROPER LOCATION ON ABOVE INDEX

EXAMPLE



MILTON TWP
ROCK COUNTY WI

IF AVAILABLE STATE PLANE COORDINATES

North (Y) _____ Eleve. (Z) _____
 East (X) _____ Zone _____
 Hor. Datum _____ Vert. Datum _____

c.)

◆ CORNER MONUMENT

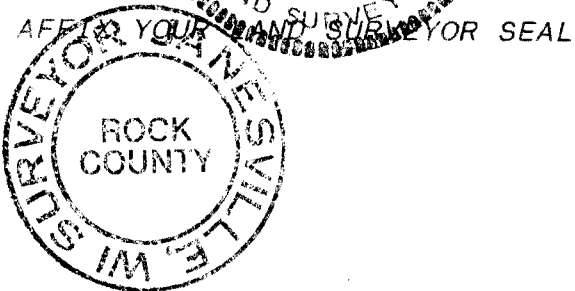
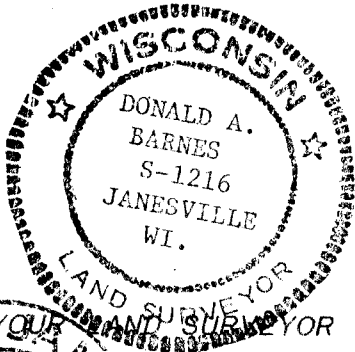
○ WITNESS MONUMENT

I, Donald Barnes, hereby certify that the corner points as identified by the corner code index were, in a field survey on, Donald Barnes Aug 1 1989, established, re-established, monumented, re-monumented, recovered or restored as expressed below and in conformance with the regulations and rules as required in the current manual of survey instructions of the United States Department of Interior, Bureau of Land Management.



BEARINGS ARE BASED ON:

seal



COUNTY SURVEYOR FILING DATA
 Date of computer entry _____
 Date microfilmed _____
 Number of included sheets _____

MICROFILMED

SHEET 1 OF 3

CORNER CODE: R 17 (1)

(B) Describe any record evidence, monument evidence, occupational evidence, testimonial evidence or any other material evidence you considered, and whether the monument was found or placed.

- 1871 RUGER REMONUMENTATION FIELD WEST ON NORTH LINE OF NW 1/4 SECTION 26 ON A VAR 4-05 22651.88 INTERSECTED WEST BOUNDARY AT CORNER. FOUND STAKE SURROUNDED BY BRICKS & STONES. AT COR ALSO FOUND STUMP OF SE BEARING TREE AND WHERE STUMP OF NW BEARING TREE HAD BEEN DUG UP.
- 1871 VOL 5 PG 116 SHOWS A VAR 4-19 2627.13 TO N 1/4 CORNER & VAR 7-16 2649.08 TO E 1/4 CORNER OF SECTION 27 AND VAR 4-05 2651.88 TO N 1/4 COR SEC 26. VAR BETWEEN THE NW AND NE CORNERS OF SECTION 26 ARE THE SAME.
- 1874 RUGER VOL 2 PG 166 SHOWS MON.
- 1875 RUGER VOL 2 PG 196 SHOWS CORNER. USED TO ESTABLISH PROPERTY CORNERS ALONG THE NORTH AND WEST LINES OF SEC 26.
- 1880 LEE VOL 2 PG 302 FOUND STONE MON. USED FOR LINE IN PLACING IRON PINS AT THE PROPERTY CORNERS STARTING AT THE W 1/4 COR OF SEC 26
- 1875 RUGER VOL 2 PG 195 FOUND STONE MONUMENT. SHOWS 2627.13 TO S 1/4 CORNER SECTION 22 AND 2651.22 TO E 1/4 CORNER OF SECTION 22.
- 1895 BLEEDHORN VOL 6 PG 298 SHOWS A DISTANCE OF 2653.4 TO N 1/4 COR SEC 26
- 1895 BROWN VOL 2 PG 490 SHOWS MONUMENT & 2653.04 TO N 1/4 COR SEC 26
- 19?? VOL 5 PG 493 A.E. WHITFORD STONE 30" BELOW SURFACE 3/4" PIPE ON TOP 32.1 TO FENCE POST, .5 S OF FENCE RUN W., 39.0 NE TO FACE OF TEL POLE, 42.6 NE TO FACE OF FENCE POST. BJS SET 1X36" PIPE OCT 19. WITH TIES TO TREES. SHOWS 2650.2 TO E 1/4 COR & 2630.7 TO N 1/4 CORNERS OF SECTION 27, 2653.5 TO S 1/4 COR SEC & 2658.2 TO W 1/4 CORNERS OF SECTION 23
- 1932 SUNNY VOL 3 PG 218 SET 1" PIPE THREE FT LONG IN CONCRETE PAVEMENT FROM A.E. WHITFORD'S REF'S. SHOWS 2630.7 TO CUT STONE AT N 1/4 COR SEC 27, 2653.5 TO CUT STONE AT N 1/4 COR SEC 26, & 2658.2 TO E 1/4 COR SEC 22, & 2650.2 TO CUT LIMESTONE AT E 1/4 COR SEC 27.
- 1935 SUNNY VOL 3 PG 265 FOUND IRON PIPE AT NW COR SEC 26
- 1969 BATTERMAN JR. VOL 4 PG ?? FOUND PIPE JUST BELOW BLK TP. 1.7 E OF CENTERLINE. SET BY B.J. SUNNY (1932) REFERENCE CORNER.
- 1983 BARNES R17 FOUND PIPE AND REFERENCED SAME. ALSO CONNECTED TO TOWNSHIP PROJECT.
- 1983 VOL 6 PG 298 MAP SHOWS PREVIOUS RECORD DISTANCES.

WHILE STH 26 IS UNDER MAJOR RECONSTRUCTION, I DUG AND FOUND A 1" X 24 PIPE ABOUT 6" DEEP, A 3/4" X 24 GALVANIZED PIPE 3.5' DEEP, AND A CUT LIMESTONE THAT IS 5.1' DEEP. PLACED 3 MAGNETS ALONG THE CUT LIMESTONE.

C) Was the corner restored through acceptance of (1) an *obliterated evidence location*, or, (2) a *found perpetuated location*?

ACCEPTED FOUND CUT LIMESTONES.

D) Describe any material discrepancy between the location of the corner as restored or reestablished and the location of that corner as previously restored or reestablished by distance and direction. Show the discrepancy on the plan view drawing under (a), above. Show the distances between the corner as previously restored or reestablished and (1) the corner as restored or reestablished, and (2) to at least 4 of the witness monuments shown on the drawing in (a), above.

(E) Was the corner reestablished through lost corner proportionate methods? If so, show the method, including the directions and distances to other public land survey corners used as evidence or used for proportioning the corner location.

U.S. PUBLIC LAND SURVEY MONUMENT RECORD

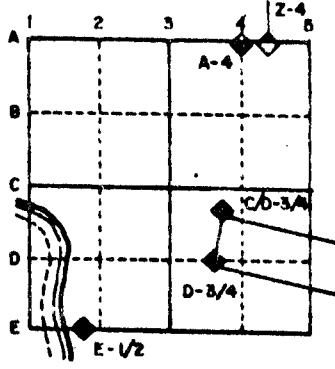
For Public Land Survey Corners in the
T. 4 N., R. 13 E.

CORNER CODE INDEX

	1	2	3	4	5	6	7	8	9	10	11	12	13	14	15	16	17	18	19	20	21	22	23	24	25
A																									
B																									
C	6	5	4	3	2																				
D																									
E																									
F																									
G																									
H	7	8	9	10	11	12																			
I																									
J																									
K																									
L	18	17	16	15	14	13																			
M																									
N																									
O																									
P	19	20	21	22	23	24																			
Q																									
R																									
S	30	29	28	27	26	25																			
T																									
U																									
V																									
W																									
X																									
Y	31	32	33	34	35	36																			
Z																									

PLACE MONUMENT SYMBOL (◆) AT PROPER LOCATION ON ABOVE INDEX

EXAMPLE

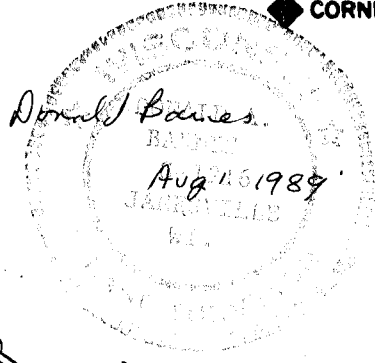


MILTON TWP
ROCK COUNTY WI

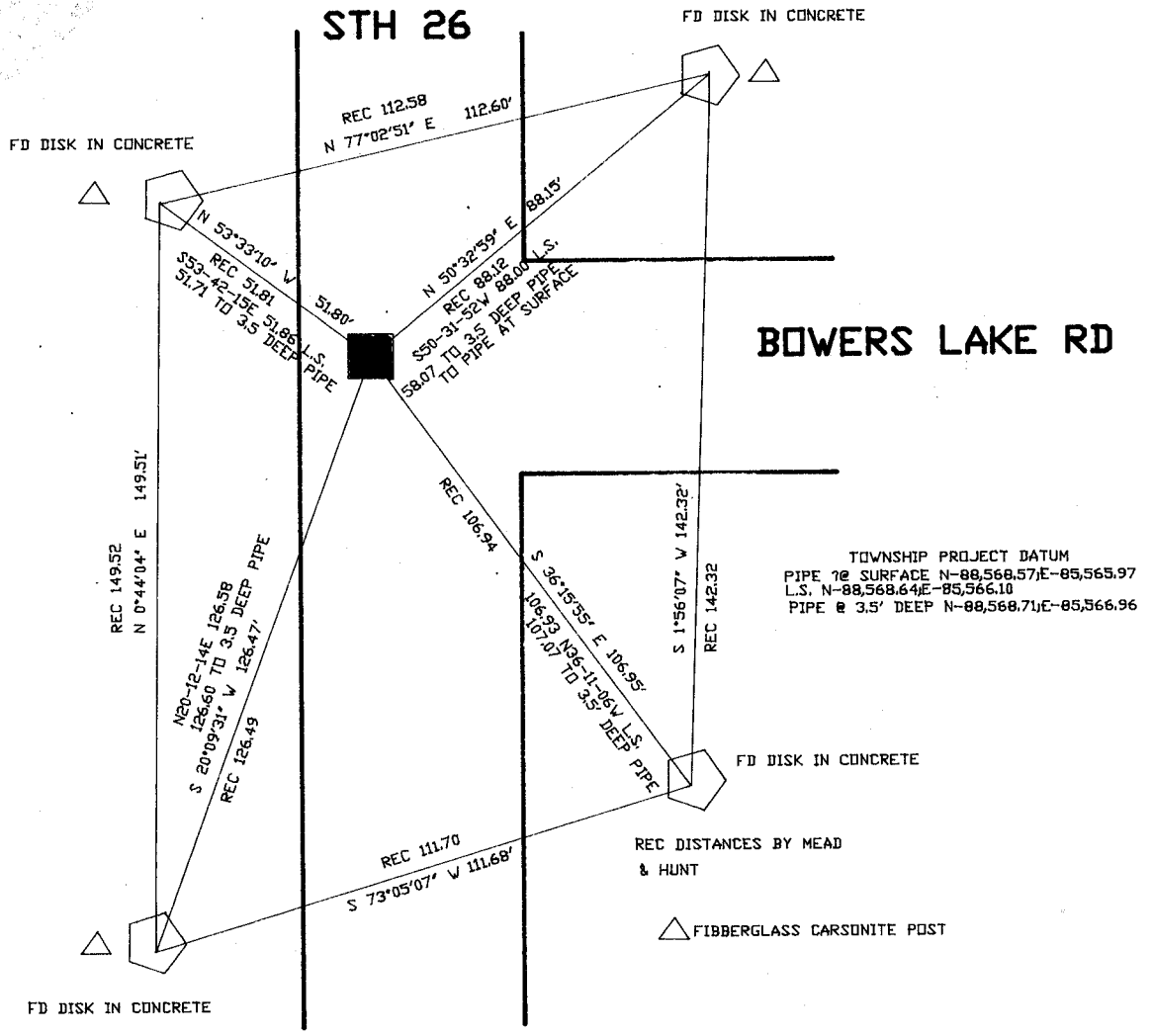
IF AVAILABLE STATE PLANE COORDINATES

North (Y) _____ Eleve. (Z) _____
 East (X) _____ Zone _____
 Hor. Datum _____ Vert. Datum _____

d.) **◆ CORNER MONUMENT** **○ WITNESS MONUMENT**



BEARINGS ARE BASED ON: 1983 TOWNSHIP PROJECT

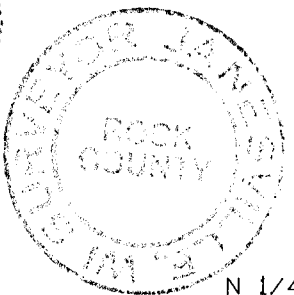
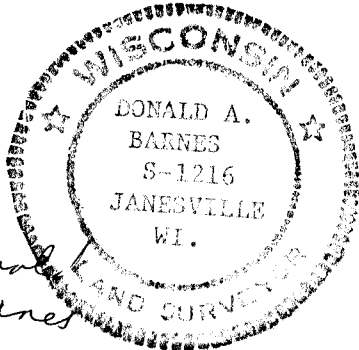


MICROFILM

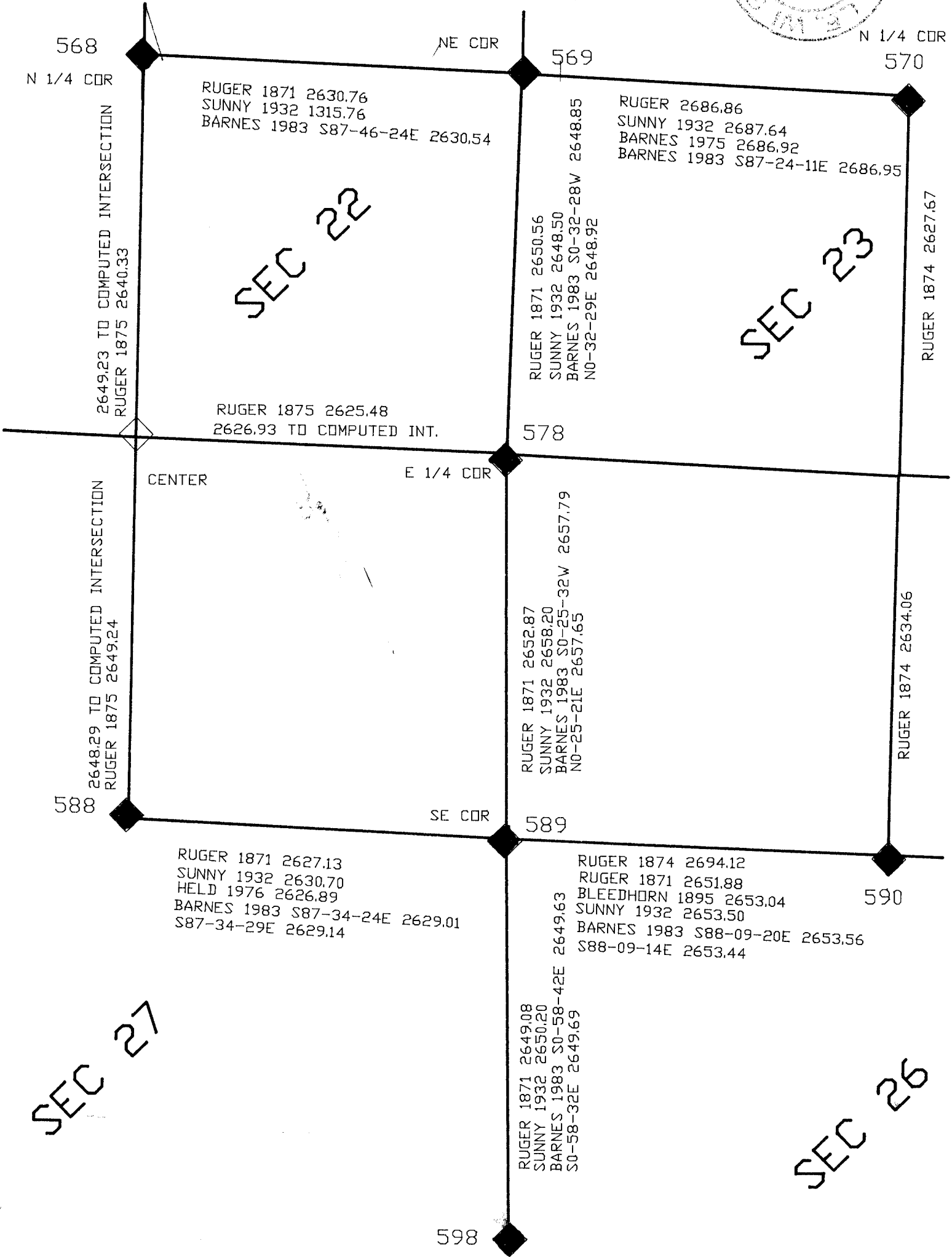
FIELD BOOK
2 PG. 58, 52, 53

SHEET 2 OF 3

CORNER CODE: R 17 (1)



Donald A. Barnes
Aug 1 1989



568
N 1/4 COR

NE COR

569

N 1/4 COR
570

RUGER 1871 2630.76
SUNNY 1932 1315.76
BARNES 1983 S87-46-24E 2630.54

RUGER 2686.86
SUNNY 1932 2687.64
BARNES 1975 2686.92
BARNES 1983 S87-24-11E 2686.95

SEC 22

SEC 23

2649.23 TO COMPUTED INTERSECTION
RUGER 1875 2640.33

RUGER 1871 2650.56
SUNNY 1932 2648.50
BARNES 1983 S0-32-28W 2648.85
N0-32-29E 2648.92

RUGER 1874 2627.67

RUGER 1875 2625.48
2626.93 TO COMPUTED INT.

578

2648.29 TO COMPUTED INTERSECTION
RUGER 1875 2649.24

CENTER
E 1/4 COR

RUGER 1871 2652.87
SUNNY 1932 2658.20
BARNES 1983 S0-25-32W 2657.79
N0-25-21E 2657.65

RUGER 1874 2634.06

588

SE COR

589

RUGER 1871 2627.13
SUNNY 1932 2630.70
HELD 1976 2626.89
BARNES 1983 S87-34-24E 2629.01
S87-34-29E 2629.14

RUGER 1874 2694.12
RUGER 1871 2651.88
BLEEDHORN 1895 2653.04
SUNNY 1932 2653.50
BARNES 1983 S88-09-20E 2653.56
S88-09-14E 2653.44

590

SEC 27

RUGER 1871 2649.08
SUNNY 1932 2650.20
BARNES 1983 S0-58-42E 2649.63
S0-58-32E 2649.69

SEC 26

598

R17(G)