

U.S. PUBLIC LAND SURVEY MONUMENT RECORD

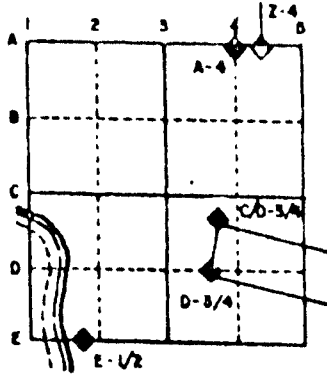
For Public Land Survey Corners in the
T. 4 N., R. 13 E.

CORNER CODE INDEX

	1	2	3	4	5	6	7	8	9	10	11	12	13	14	15	16	17	18	19	20	21	22	23	24	25
A																									
B																									
C	6																								
D		5																							
E			4																						
F				3																					
G					2																				
H	7																								
I		8																							
J			9																						
K				10																					
L					11																				
M						12																			
N	16																								
O		17																							
P			18																						
Q				19																					
R					20																				
S						21																			
T							22																		
U								23																	
V									24																
W										25															
X											26														
Y												27													
Z													28												
														29											
															30										
																31									
																	32								
																		33							
																			34						
																				35					
																					36				

PLACE MONUMENT SYMBOL (◆) AT PROPER LOCATION ON ABOVE INDEX

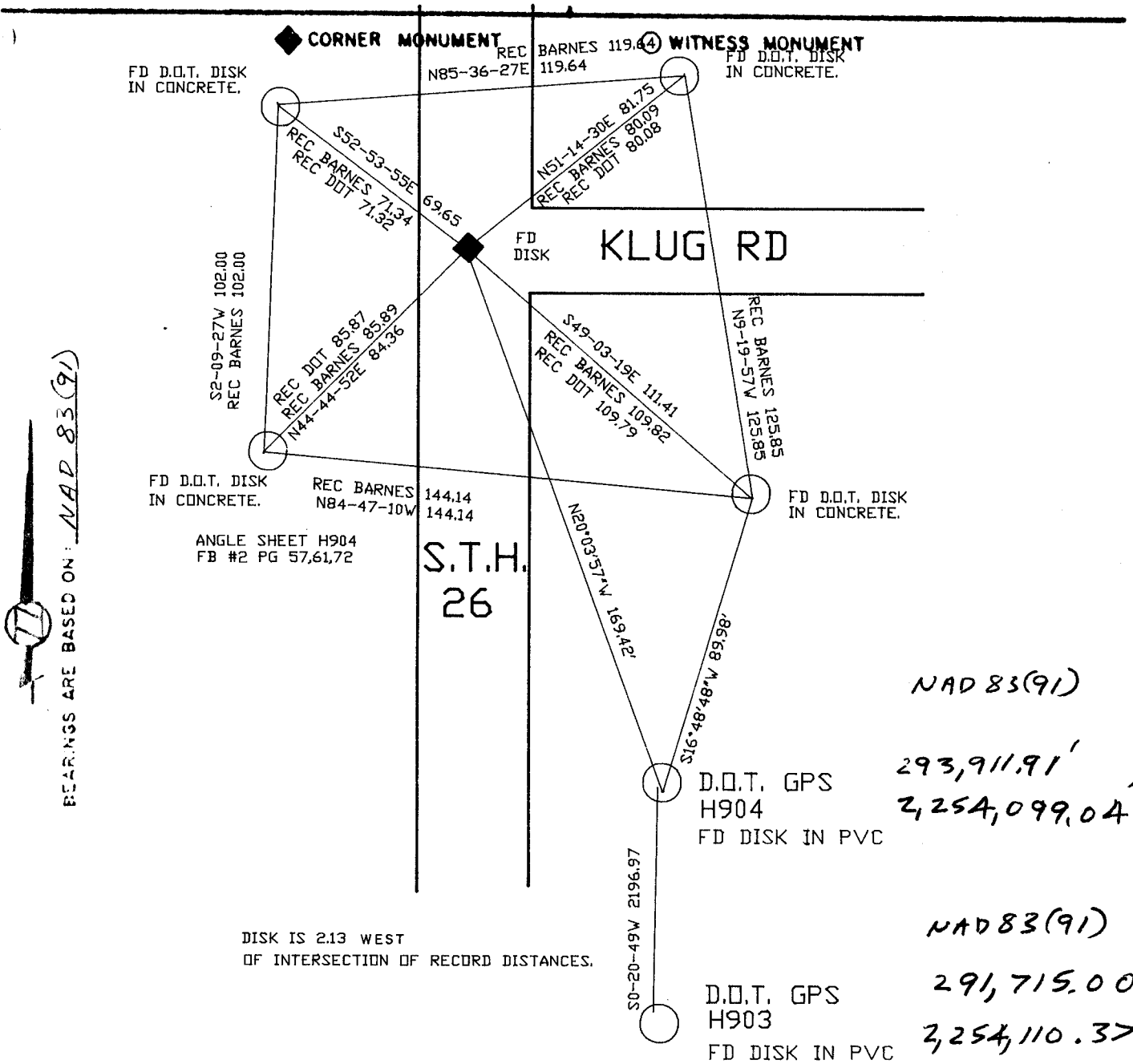
EXAMPLE



MILTON TWP
ROCK COUNTY WI

IF AVAILABLE
STATE PLANE COORDINATES

North (Y) _____ Elev. (Z) _____
 East (X) _____ Zone _____
 Hor. Datum _____ Vert. Datum _____



BEARINGS ARE BASED ON: NAD 83 (91)

NAD 83(91)
 293,911.91'
 2,254,099.04'
 NAD 83(91)
 291,715.00'
 2,254,110.37'

DISK IS 2.13 WEST OF INTERSECTION OF RECORD DISTANCES.

MICROFILMED

SHEET 1 OF 2

CORNER CODE: N17 (L)

(B) Describe any record evidence, monument evidence, occupational evidence, testimonial evidence or any other material evidence you considered, and whether the monument was found or placed.

- 1871 RUGER REMONUMENTATION FIELD NOTES. EAST ON NORTH LINE NE 1/4 SEC 22 ON A VAR 3-40 OFFSET SOUTH 20 LKS AT 2630.76 INTERSECTED EAST BOUNDARY 15 LKS SOUTH OF COR. FOUND REMAINS OF OLD STAKE AT CORNER ALSO FOUND STUMP OF B.T. VAR CORRECTED 3-36. 2630.75 TO N 1/4 CORNER OF SECTION 22, 2686.86 TO N 1/4 CORNER OF SEC 23, 2650.56 TO W 1/4 CORNER OF SEC 23.
- 1874 RUGER VOL 2 PG 166 SHOWS STONE MONUMENT.
- 1875 RUGER VOL 2 PG 195 SHOWS STONE MONUMENT, 2630.76 TO N 1/4 COR SEC 22, AND 2650.56 TO E 1/4 COR SEC 22.
- 1879 RUGER VOL 2 PG 268 SHOWS MONUMENT.
- 1932 SUNNY VOL 3 PG 218 ESTABLISHED CORNER BY PROPORTIONATE MEASUREMENT E & W. & BY FENCE LINE N & S. SET 1" PIPE 3' LONG IN CONC. PAV'MNT. 1.75' E OF CENTERLINE. SHOWS TIES TO TREES AND FENCE. 2687.64 TO N 1/4 COR SEC 23 (FD CUT STONE), 1315.76 TO 16X8X7 HH SET BY RUGER IN 1875 AT N 1/16th CORNER OF NE 1/4 OF SECTION 22, AND 2648.5 TO E 1/4 COR OF SEC 22 (ESTABLISHED 1/4 CORNER BY POSSESSION. PLACED 1" PIPE 3' LONG IN CONCRETE PAV'MNT. 0.4' E OF THE CENTER OF SAME.)
- 1932 SUNNY VOL 3 PG 219 THIS MONUMENT IS THE SAME AS MON "D" ON PAGE 218. SHOWS A DISTANCE OF 5304.9 TO E 1/4 CORNER OF SECTION 15 (SET 1" IRON PIPE 2' LONG IN CONC. PAVEMENT BY PROPORTIONAL MEASUREMENT ON LINE FROM NE TO SE CORNERS OF SECTION 15)
- 19?? BATTERMAN VOL 5 PG 82 STATES SEE VOL 4 PG 416 AND SHOWS A DISTANCE OF 2651.10 TO W 1/4 COR SEC 14 AND 2686.92 TO SOUTH QUARTER CORNER OF SEC 14.
- 19?? VAR 5 PG 495 STATES THAT BJS SET 1X36 PIPE 1.75' EAST OF CENTER OF CONCRETE HIGHWAY WITH BEARING TREES. SHOWS 2687.64 TO STONE AT N 1/4 COR SEC 23, 1315.76 TO 1/16th CORNER TO THE WEST, 2650.56 TO W 1/4 CORNER OF SECTION 23.
- 1969 BATTERMAN JR. VOL 4 416 FOUND PIPE JUST BELOW BLKTP, 1.7E. OF CENTER OF PVMT AS SET BY B.JH. SUNNY (1932) REFERENCED CORNER.
- 1983 BARNES TOWNSHIP PROJECT. FOUND PIPE AND CONNECTED TO PROJECT.
- 1989 BARNES N17 WHILE STH 26 WAS BEING RECONSTRUCTED I DUG A 10' DEEP HOLE. I FOUND A 1" PIPE AS REFERENCED AND JUST UNDER THE OLD CONCRETE, I FOUND A TACKED WOOD HUB. I DID NOT ACCEPT THE TACKED HUB FOR THE FOLLOWING REASONS:
1) THERE WERE NO RECORDS FOR THIS HUB.
2) THE FOUND IRON PIPE IS MORE IN HARMONY WITH RUGER'S REMONUMENTATION DISTANCES THAN THE HUB.

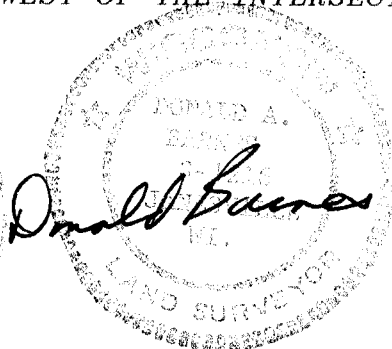
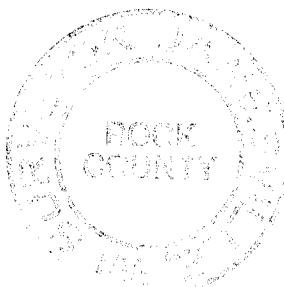
FOUND DISK THAT WAS PLACED BY DOT CONSULTANTS.

C) Was the corner restored through acceptance of (1) an obliterated evidence location, or, (2) a found perpetuated location?

ACCEPTED THE FOUND PERPETUATED LOCATION OF 1" PIPE.

D) Describe any material discrepancy between the location of the corner as restored or reestablished and the location of that corner as previously restored or reestablished by distance and direction. Show the discrepancy on the plan view drawing under (a), above. Show the distances between the corner as previously restored or reestablished and (1) the corner as restored or reestablished, and (2) to at least 4 of the witness monuments shown on the drawing in (a), above.

DISK IS 2.13 WEST OF THE INTERSECTION OF THE RECORD TIE DISTANCES.



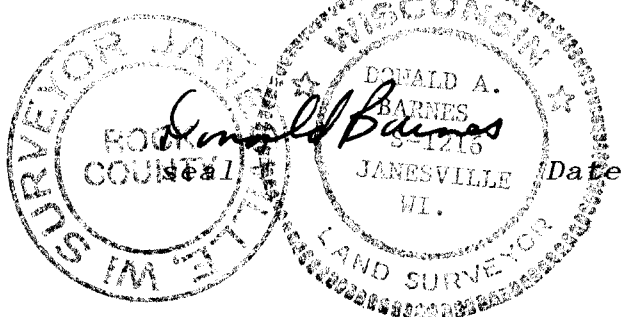
10 OF 2

17(1)

(E) Was the corner reestablished through lost corner proportionate methods? If so, show the method, including the directions and distances to other public land survey corners used as evidence or used for proportioning the corner location.
NO

I, Donald Barnes, hereby certify that the corner points as identified by the corner code index were, in a field survey on, September 16, 1991, established, re-established, monumented, re-monumented, recovered or restored as expressed below and in conformance with the regulations and rules as required in the current manual of survey instructions of the United States Department of Interior, Bureau of Land Management.

COUNTY SURVEYOR FILING DATA



Date of computer entry _____

Date microfilmed _____

Number of included sheets _____
CORNER CODE

AFFIX YOUR LAND SURVEYOR SEAL