

Paper weight-110# (minimum) Black nonfading ink required

# U.S. PUBLIC LAND SURVEY MONUMENT RECORD

For Public Land Survey Corners In:  
**T. 4 N. R. 13 E. 4th P.M.**  
 CORNER CODE INDEX

WI ADMINISTRATIVE CODE A-E 7.08 REQUIREMENT  
 REV 10/23/2004 USMONREC.DWG

	1	2	3	4	5	6	7	8	9	10	11	12	13	14	15	16	17	18	19	20	21	22	23	24	25
A																									
B																									
C																									
D																									
E																									
F																									
G																									
H																									
I																									
J																									
K																									
L																									
M																									
N																									
O																									
P																									
Q																									
R																									
S																									
T																									
U																									
V																									
W																									
X																									
Y																									
Z																									

1 PLACE MONUMENT SYMBOL  $\blacklozenge$  AT PROPER LOCATION ON ABOVE INDEX

MILTON TWP  
 ROCK COUNTY WI

IF AVAILABLE  
 ROCK COUNTY COORDINATES PREFERRED

North \_\_\_\_\_ Elev. \_\_\_\_\_

East \_\_\_\_\_

Hor. Datum \_\_\_\_\_ Vert. Datum \_\_\_\_\_

LATITUDE \_\_\_\_\_ ELLIPS. HT. \_\_\_\_\_

LONGITUDE \_\_\_\_\_

NAD83(91) \_\_\_\_\_ NETWORK ADJ. YR \_\_\_\_\_

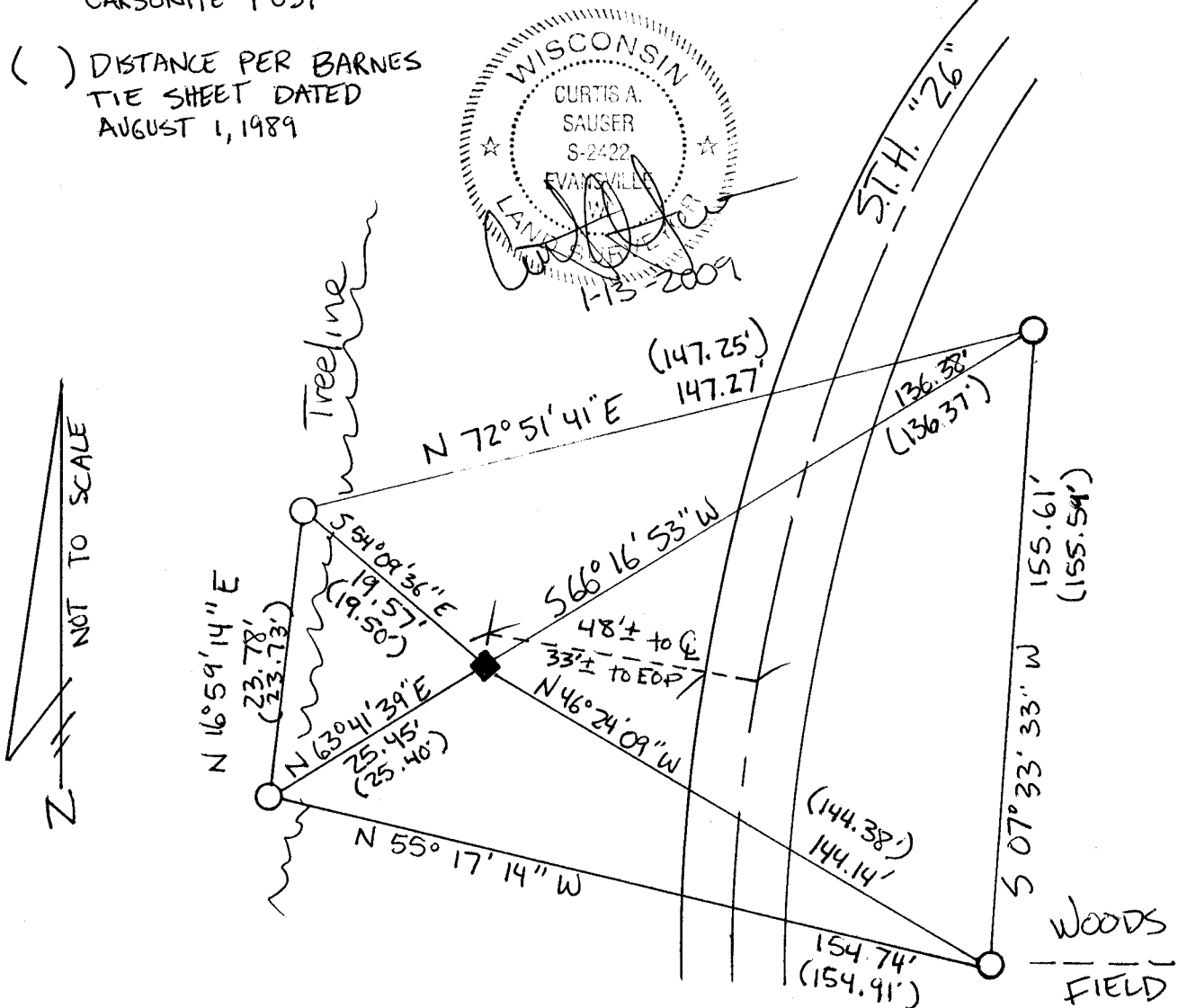
GPS (X) \_\_\_\_\_ TRAVERSE (X) \_\_\_\_\_

BASED ON THE FOLLOWING CONTROL:

- (a)  CORNER MONUMENT  
 L W I S D O T CAP IN CONCRETE AND MARKED WITH CARSONITE POST
- WITNESS MONUMENT  
 L W I S D O T CAP IN CONCRETE

( ) DISTANCE PER BARNES TIE SHEET DATED AUGUST 1, 1989

BEARINGS ARE BASED ON: WEST LINE OF SW QUARTER OF SECTION 11-4-13, BEARING N 02° 54' 52" E



FIELD BOOK \_\_\_\_\_ PAGE # \_\_\_\_\_ SHEET 1 OF 2

SHOW A PLAN VIEW DRAWING DEPICTING THE CORNER MONUMENT AND SURROUNDING PHYSICAL FEATURES, INCLUDING THE EXCAVATION AREA AND DEPTH.

PLANNING & ZONING COMMITTEE ADOPTED THIS FORM ON 12/2/1982

CORNER CODE J-17(1)

(B) Describe any record evidence, monument evidence, occupational evidence, testimonial evidence or any other material evidence you considered, and whether the monument was found or placed.

FOUND A WISDOT CAP IN CONCRETE AT CORNER POSITION

TIES TO THIS MONUMENT WERE WITHIN AN ACCEPTABLE TOLERANCE OF BARNES MEASUREMENTS SHOWN ON HIS TIE SHEET DATED 8/1/1989 WHEN HE NOTED THE MONUMENT WAS A CUT LIMESTONE

C) Was the corner restored through acceptance of (1) an obliterated evidence location, or, (2) a found perpetuated location?

ACCEPTED FOUND WISDOT CAP IN CONCRETE

D) Describe any material discrepancy between the location of the corner as restored or reestablished and the location of that corner as previously restored or reestablished by distance and direction. Show the discrepancy on the plan view drawing under (a), above. Show the distances between the corner as previously restored or reestablished and (1) the corner as restored or reestablished, and (2) to at least 4 of the witness monuments shown on the drawing in (a), above.

SEE DIAGRAM

(E) Was the corner reestablished through lost corner proportionate methods? If so, show the method, including the directions and distances to other public land survey corners used as evidence or used for proportioning the corner location.

I, CURT SAUSER, hereby certify that the corner location as identified by the corner code index was determined by me under my direction and control and that this U.S. Public Land Survey Monument Record is correct and complete to the best of my knowledge and belief.



SHEET 2 OF 2

CORNER CODE

J-17(1)

A.E. 7.08 REQUIREMENT