

Paper weight-110# (minimum)

Black nonfading ink required

U.S. PUBLIC LAND SURVEY MONUMENT RECORD

For Public Land Survey Corners In:

WI ADMINISTRATIVE CODE A-E 7.08 REQUIREMENT

T. 4 N. R. 13 E. 4th P.M.

REV 10/23/2004

USMONREC.DWG

CORNER CODE INDEX

Milton

TWP

ROCK COUNTY WI

IF AVAILABLE

ROCK COUNTY COORDINATES PREFERRED

A	1	2	3	4	5	6	7	8	9	10	11	12	13	14	15	16	17	18	19	20	21	22	23	24	25	A
B																										B
C																										C
D																										D
E																										E
F																										F
G																										G
H																										H
I																										I
J																										J
K																										K
L																										L
M																										M
N																										N
O																										O
P																										P
Q																										Q
R																										R
S																										S
T																										T
U																										U
V																										V
W																										W
X																										X
Y																										Y
Z																										Z

North _____ Elev. _____

East _____

Hor. Datum _____ Vert. Datum _____

LATITUDE _____ ELLIPS. HT. _____

LONGITUDE _____

NAD83(91) _____ NETWORK ADJ. YR _____

GPS (X) _____ TRAVERSE (X) _____

BASED ON THE FOLLOWING CONTROL:

PLACE MONUMENT SYMBOL AT PROPER LOCATION ON ABOVE INDEX

CORNER MONUMENT

WITNESS MONUMENT

BEARINGS ARE BASED ON: Assumed Datum

see Page 2

FIELD BOOK _____ PAGE # _____

SHEET 1 OF 2

SHOW A PLAN VIEW DRAWING DEPICTING THE CORNER MONUMENT AND SURROUNDING PHYSICAL FEATURES, INCLUDING THE EXCAVATION AREA AND DEPTH.

PLANNING & ZONING COMMITTEE ADOPTED THIS FORM ON 12/2/1982

CORNER CODE E-17(1)

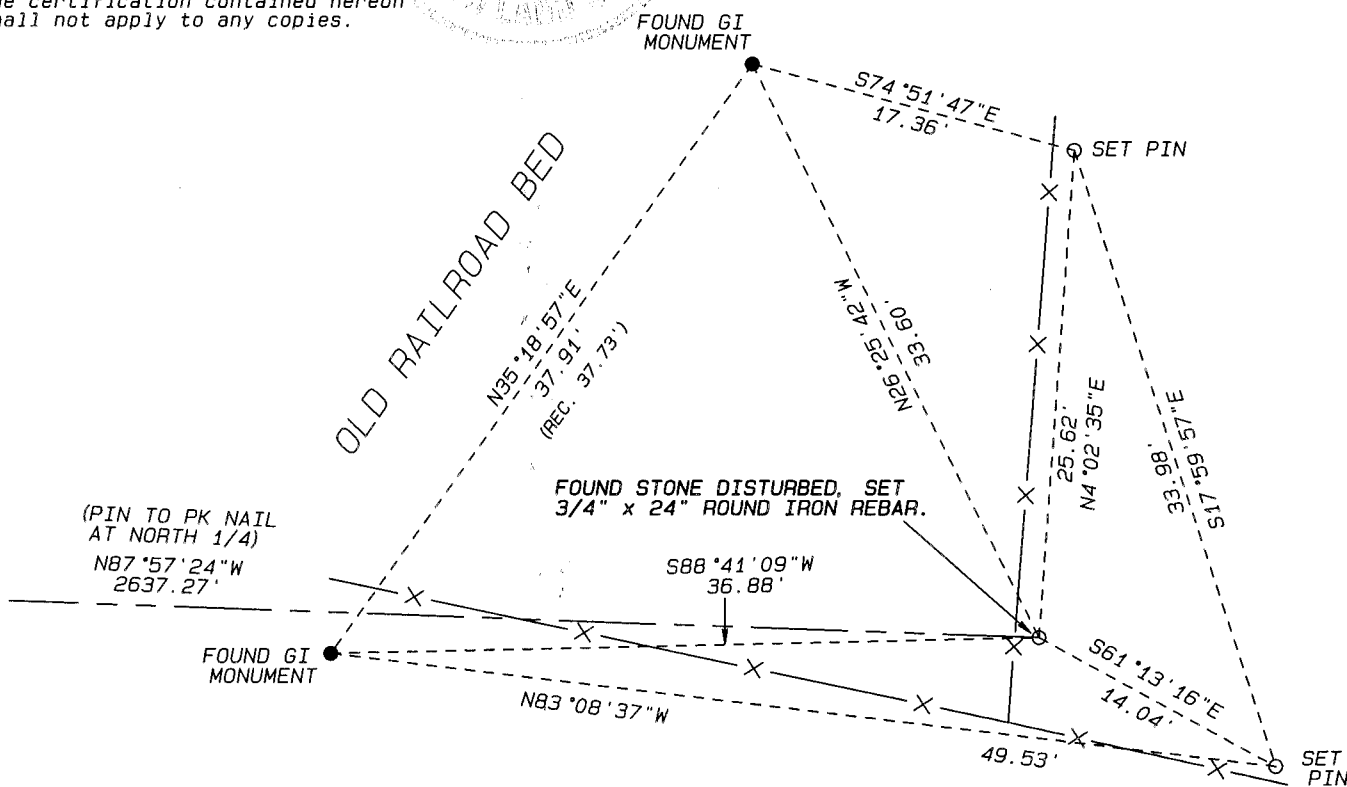
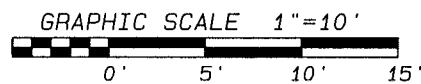
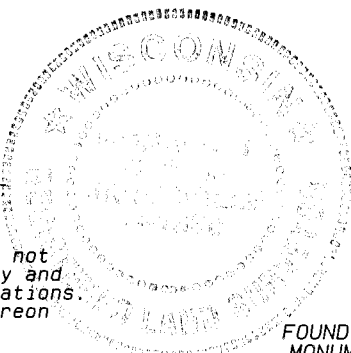
E-17
MILTON TWP

DISTURBED STONE IS LOCATED N40°57'40"W 1.46' OF SET PIN. SURVEYOR FOUND NO EVIDENCE OF BERNSTEIN MONUMENT OR RAILROAD SPIKES MENTIONED IN VOLUME 5, PAGE 174 OF ROCK COUNTRY SURVEY RECORDS. SET PIN AT RECORD DISTANCES FROM REFERENCE MONUMENTS.

Ronald J. Combs

Ronald J. Combs
R.L.S. Number 1330


If the surveyor's signature is not red in color, the map is a copy and may contain unauthorized alterations. The certification contained hereon shall not apply to any copies.



LEGEND:

- = SET 3/4 x 24", ROUND IRON REBAR, WEIGHING 1.5 LBS. LIN. FT.
- X— FENCE

E 17(1)
DATED AUGUST 29TH, 2007



- LAND SURVEYING
- LAND PLANNING
- CIVIL ENGINEERING

109 W. Milwaukee St.
Janesville, WI 53548
www.combsurvey.com

tel: 608 752-0575
fax: 608 752-0534