

Paper weight-110# (minimum)

Black nonfading ink required

U.S. PUBLIC LAND SURVEY MONUMENT RECORD

For Public Land Survey Corners In:
T. 4 N. R. 13 E. 4th P.M.

WI ADMINISTRATIVE CODE A-E 7.08 REQUIREMENT
REV 10/23/2004 USMONREC.DWG

CORNER CODE INDEX

	1	2	3	4	5	6	7	8	9	10	11	12	13	14	15	16	17	18	19	20	21	22	23	24	25		
A																											A
B																											B
C																											C
D																											D
E																											E
F																											F
G																											G
H																											H
J																											J
K																											K
L																											L
M																											M
N																											N
O																											O
P																											P
Q																											Q
R																											R
S																											S
T																											T
U																											U
V																											V
W																											W
X																											X
Y																											Y
Z																											Z
	1	2	3	4	5	6	7	8	9	10	11	12	13	14	15	16	17	18	19	20	21	22	23	24	25		

MILTON TWP

ROCK COUNTY WI

IF AVAILABLE
ROCK COUNTY COORDINATES PREFERRED

North _____ Elev. _____

East _____

Hor. Datum _____ Vert. Datum _____

LATITUDE _____ ELLIPS. HT. _____

LONGITUDE _____

NAD83(91) _____ NETWORK ADJ. YR _____

GPS (X) _____ TRAVERSE (X) _____

BASED ON THE FOLLOWING CONTROL:

PLACE MONUMENT SYMBOL AT PROPER LOCATION ON ABOVE INDEX

CORNER MONUMENT WITNESS MONUMENT

(a)

BEARINGS ARE BASED ON: ROCK COUNTY PROJECTION

FIELD BOOK _____ PAGE # _____
OR OBSERVATION SHEET _____

SHEET 1 OF 2

SHOW A PLAN VIEW DRAWING DEPICTING THE CORNER MONUMENT AND SURROUNDING PHYSICAL FEATURES, INCLUDING THE EXCAVATION AREA AND DEPTH.

PLANNING & ZONING COMMITTEE ADOPTED THIS FORM ON 12/2/1982

CORNER CODE C-17(1)

M1518 W1/4CORSEC2MILTONTWP

(B) Describe any record evidence, monument evidence, occupational evidence, testimonial evidence or any other material evidence you considered, and whether the monument was found or placed.

1976 BARNES VOL 5 PG 174 FD CUT STONE MARKED S 1/4 0.5'
ABOVE GROUND. REFERENCED SAME.

1981 BARNES C-17 FD CUT LIMESTONE WITH TOP 18" BROKE OFF.
SET 12" ALUM MON ON TOP OF BOTTOM PART OF STONE.
ALSO SET CARSONITE POST. CORNER WAS REFERENCED IN
1976 VOL 5 PG 174. 307,316.77; 2,285,818.47.

THE LAND OWNER CALLED & REQUESTED THAT I REMOVE THE NW G-1 MONUMENT BECAUSE IT WAS IN HIS WAY. THE G-1 WAS BENT AND ABOUT 4" ABOVE THE GROUND. I STRAIGHTENED THE MONUMENT AND MEASURED TO IT. I THEN REMOVED IT.

C) Was the corner restored through acceptance of (1) an obliterated evidence location, or, (2) a found perpetuated location?

ACCEPTED FD PERPETUATED LOCATION

D) Describe any material discrepancy between the location of the corner as restored or reestablished and the location of that corner as previously restored or reestablished by distance and direction. Show the discrepancy on the plan view drawing under (a), above. Show the distances between the corner as previously restored or reestablished and (1) the corner as restored or reestablished, and (2) to at least 4 of the witness monuments shown on the drawing in (a), above.

NONE

(E) Was the corner reestablished through lost corner proportionate methods? If so, show the method, including the directions and distances to other public land survey corners used as evidence or used for proportioning the corner location.

I, **Donald Barnes**, hereby certify that the corner location as identified by the corner code index was determined by me under my direction and control and that this U.S. Public Land Survey Monument Record is correct and complete to the best of my knowledge and belief.

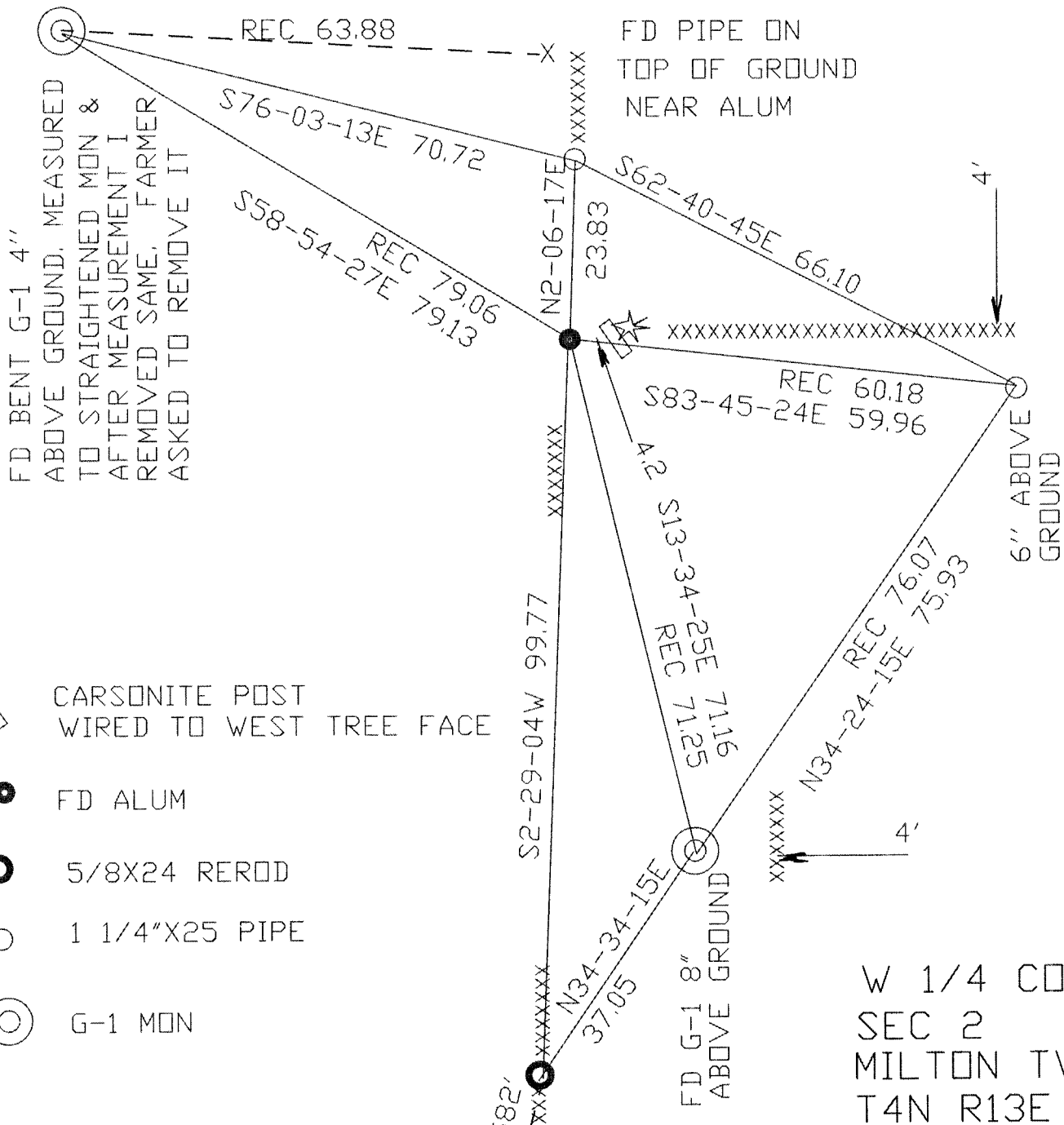
SEAL






Donald Barnes

SHEET 1 OF 2

6/26/2012 A.E. 7.08 REQUIREMENT

CORNER CODE C-17(1)



-  CARSONITE POST WIRED TO WEST TREE FACE
-  FD ALUM
-  5/8X24 REROD
-  1 1/4"X25 PIPE
-  G-1 MON

S13-35-21W 10.582' CELL
 1976 BARNES VOL 5 PG 174
 2012 BARNES OBSERVATION SHEET 518
Paul Barnes SHEET 2 OF 2
 EMBOSSSED SEAL
 6/26/2012
 C-17(1)