

U.S. PUBLIC LAND SURVEY MONUMENT RECORD

For Public Land Survey Corners in:

WI ADMINISTRATIVE CODE A-E 7.08 REQUIREMENT

T. 5 N., R. 13 E

CORNER CODE INDEX

KOSHKONONG TWP

ROCK COUNTY WI

IF AVAILABLE
ROCK COUNTY COORDINATES PREFERRED

A	1	2	3	4	5	6	7	8	9	10	11	12	13	14	15	16	17	18	19	20	21	22	23	24	25
B																									
C	6																								
D																									
E																									
F	1																								
G		8																							
H			9																						
I				10																					
J					11																				
K						12																			
L	18																								
M		11																							
N			16																						
O				15																					
P					14																				
Q						13																			
R	19																								
S		20																							
T			21																						
U				22																					
V					23																				
W						24																			
X	30																								
Y		29																							
Z			28																						
				27																					
					26																				
						25																			
							30																		
								31																	
									32																
										33															
											34														
												35													
													36												

North _____ Elev. _____

East _____

Hor. Datum _____ Vert. Datum _____

LATITUDE _____ ELLIPS. HT. _____

LONGITUDE _____

GPS (X) _____ TRAVERSE (X) _____

BASED ON THE FOLLOWING CONTROL:

PLACE MONUMENT SYMBOL \blacklozenge AT PROPER LOCATION ON ABOVE INDEX

\blacklozenge CORNER MONUMENT

\circ WITNESS MONUMENT

(a)

THOMAS WOLLIN, JEFFERSON COUNTY SURVEYOR, PROVIDED THE STATE PLANE COORDINATES FOR CORNER CODE #8101 COR SE SEC 34 T5N R13E

STATE PLANE COORDINATES N/S 310, 210, 570
NAD 1983/91 OF RECORD E/W 2, 254, 303, 076

DONALD BARNES CONVERTED THE ABOVE COORDINATES TO THE FOLLOWING:

LATITUDE 42-50-46.01039
LONGITUDE 88-56-03.37503
MERIDIAN CONV. 0-43-56.157
SCALE FACTOR 0.9999791717

ROCK COUNTY COORDINATES (NAD 1983/91)

N/S 328, 644.175
E/W 516, 998.288
SCALE 0.9999975638

CONVERGENCE: THE ANGULAR DIFFERENCE BETWEEN THE GEODETIC NORTH & THE ROCK COUNTY MERCATOR NORTH

\oplus DEG 0 MIN 05 SEC 37.7

Donald Barnes

2/13/03

FIELD BOOK _____ PAGE # _____

SHEET 1 OF 1

SHOW A PLAN VIEW DRAWING DEPICTING THE CORNER MONUMENT AND SURROUNDING PHYSICAL FEATURES, INCLUDING THE EXCAVATION AREA AND DEPTH.

PLANNING & ZONING COMMITTEE ADOPTED THE ABOVE FORM ON 12/2/1982

File in MILTON TWP

CORNER CODE A-17(1)

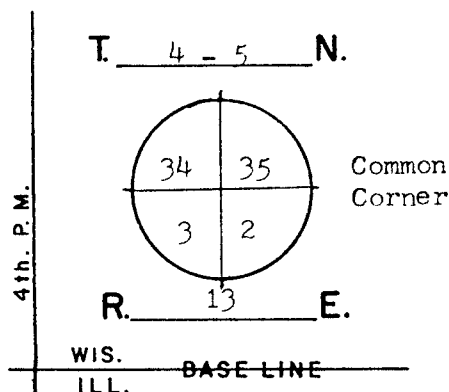
BEARINGS ARE BASED ON:

GOVERNMENT LAND CORNER RECORD

JEFFERSON COUNTY

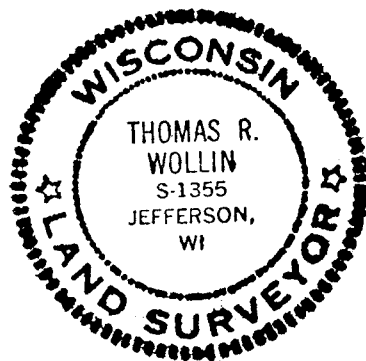
CORNER NO. 8101

TYPE OF MONUMENT Plastic/Bronzed Cap
 STATE PLANE COORDINATES NAD 1983/91
 N. 310210.570 SE-34
 E. 2254303.076
 ELEVATION M.S.L. DATUM: _____
 Grid-Ground 1.0000528970
 FIELD BOOK Koshkonong p. 131
 DRAWN BY TRW



BASIS FOR MONUMENTATION

Original Survey, 1834-37, Wood Post & Bearing Trees
 Resurvey of Milton Township, by Edward Ruger, 1871.
 A Limestone Monument was set for the corner. Ref. Rock County Surveyor records.
 Resurvey of Koshkonong Twp., by Milo C. Jones, August-Dec., 1886. Field notes say that the corner was set equal-distance and on a straight-line between $\frac{1}{4}$ corners. No mention is made of the Milton stone mon. For the corner a Limestone Monument, 5" by 36" long, was set. Notes recorded in Reg. of Deeds, Misc. Vol. 1, p. 389-412.
 10/22/1976, A concrete monument with $\frac{1}{2}$ " iron re-rod was found and referenced by Rock Co. Surveyor, Don Barnes. Ref. Rock Co. Survey Records, Vol. 5 p. 214.
 8/23/1995, I removed the concrete mon. and set a Plastic/Bronzed Cap mon. for the corner. Also found a limestone monument about $1\frac{1}{2}$ ' below road surface, and on the SW side of the concrete monument. It appears that the stone was moved to allow the setting of the concrete monument.
 2/8/2002, G.P.S. coordinates are assigned. A Topcon CP-SX1 single-frequency receiver was used.



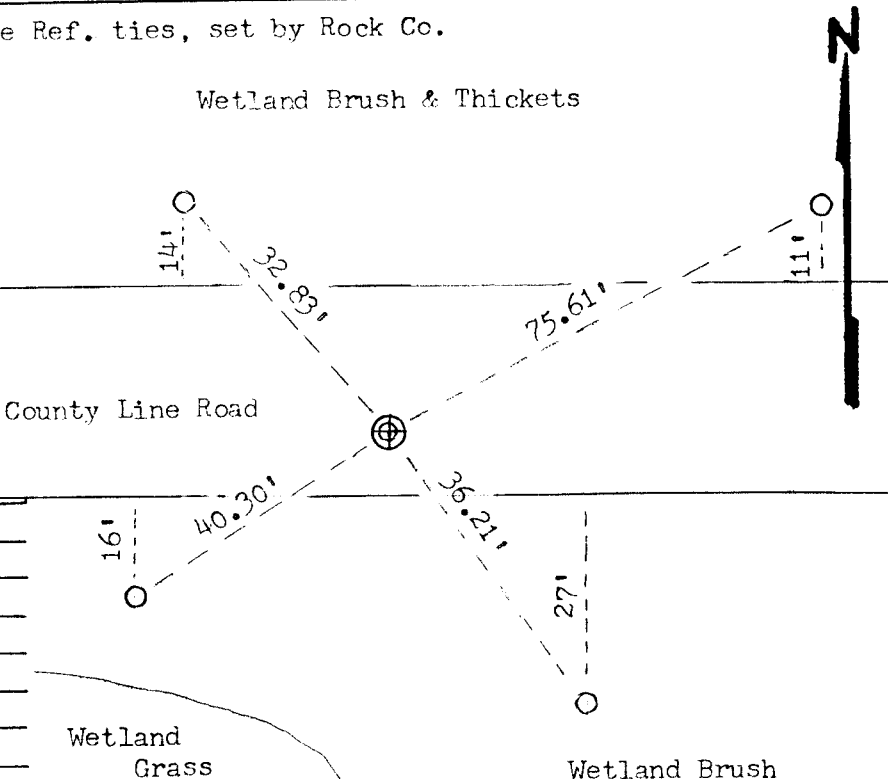
DATA SHOWN HERE ON CERTIFIED CORRECT:

Thomas R. Wollin
 REGISTERED LAND SURVEYOR
 DATED 8/23/1995

LOCATION SKETCH

Iron Pipe Ref. ties, set by Rock Co.

- SQUARE CUT LIMESTONE
- CONCRETE / BRASS CAP
- Plastic/Bronzed Cap 4" by 33"
- IRON PIPE $1\frac{1}{2}$ " by 24"
- T STEEL "T" BAR STAKE
- + PK NAIL
- FENCE
- UTILITY POLE
- STEEL POST / SIGN



MAINTENANCE RECORD

DATE	INIT.	REMARKS