

For Public Land Survey Corners in the

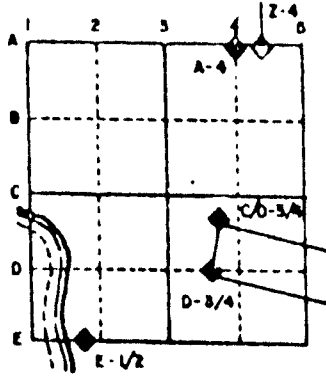
T. 4 N., R. 13 E.

CORNER CODE INDEX

	1	2	3	4	5	6	7	8	9	10	11	12	13	14	15	16	17	18	19	20	21	22	23	24	25
A																									
U																									
D																									
E																									
F																									
G																									
H																									
J																									
K																									
L																									
M																									
N																									
U																									
P																									
Q																									
H																									
S																									
T																									
U																									
V																									
W																									
X																									
Y																									
Z																									

PLACE MONUMENT SYMBOL (◆) AT PROPER LOCATION ON ABOVE INDEX

EXAMPLE



MILTON TWP
ROCK COUNTY WI

IF AVAILABLE
STATE PLANE COORDINATES

North (Y) _____ Eleve. (Z) _____
 East (X) _____ Zone _____
 Hor. Datum _____ Vert. Datum _____

◆ CORNER MONUMENT

○ WITNESS MONUMENT

BEARINGS ARE BASED ON:

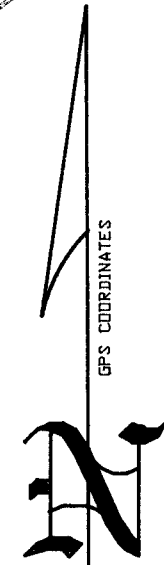
MICROFILMED

SHEET 1 OF 3

CORNER CODE: P17(A)

Donald Barnes
 SURVEYOR JAMES W. LITTLE
 ROCK COUNTY

NAD 83(91)
 293,911.91'
 2,254,099.04'

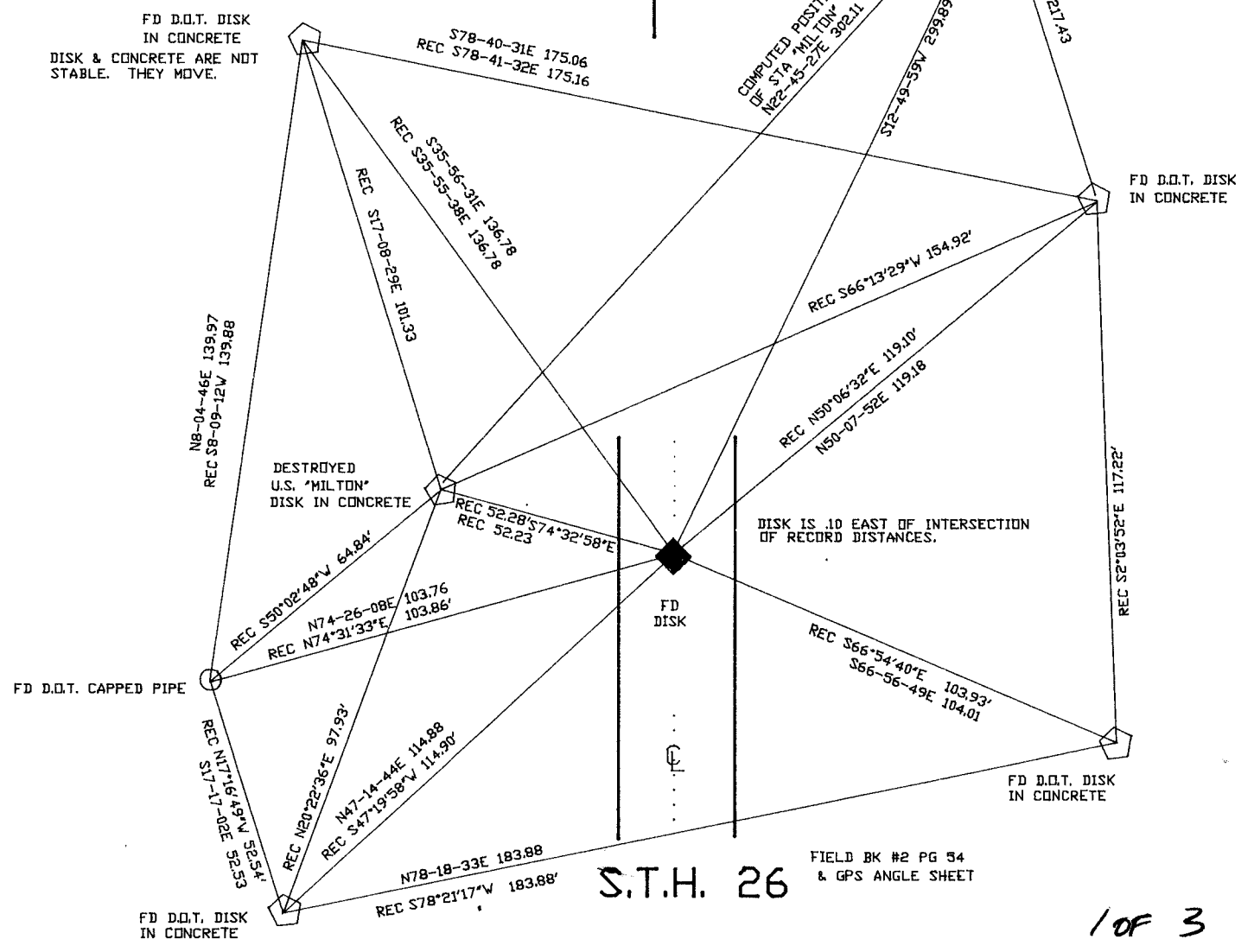


FD DOT DISK IN PVC PIPE
 DOT GPS H904

NAD 83(91)
 291,715.00
 2,254,110.37

FD DOT DISK IN PVC PIPE
 DOT GPS H903

FD D.O.T. DISK IN CONCRETE
 DISK & CONCRETE ARE NOT STABLE. THEY MOVE.



S.T.H. 26
 FIELD BK #2 PG 54 & GPS ANGLE SHEET

1 OF 3

P17 (2)

(B) Describe any record evidence, monument evidence, occupational evidence, testimonial evidence or any other material evidence you considered, and whether the monument was found or placed.

- 1871 RUGER REMONUMENTATION FIELD NOTES. ON A VAR OF 6-15 AT 2652.87 INTERSECTED 1/4 LINE AT 1/4 COR. FOUND LIMESTONE AT COR. NORTH ON WEST LINE OF NW 1/4 OF SEC 23 ON A VAR 7-10 AT 2650.56 INTERSECTED NORTH BOUNDARY LINE AT COR. PLACED CUT LIMESTONE.
- 1874 RUGER VOL 2 PG 166 FOUND STONE MONUMENT. USED TO SUBDIVIDE SECTION 23.
- 1875 RUGER VOL 2 PG 195 FOUND STONE MONUMENT & USED TO SUBDIVIDE SECTION 22. SHOWS 2625.48 TO CENTER OF SECTION 22, VAR 4-30 2650.56 TO NE CORNER OF SECTION 22, AND VAR OF 5-00 2651.22 TO THE SE CORNER OF SECTION 22. THE COMPUTED DISTANCE FROM THE CORNER TO THE INTERSECTION OF THE 1/4 LINES IS
- 1932 SUNNY VOL 3 PG 218 STATES THAT MONUMENTS ON THAT PAGE WERE DESTROYED DURING THE CONSTRUCTION OF HIGHWAY 26 IN 1926, AND ORDERED REPLACED BY THE COUNTY BOARD OF SUPERVISORS. PLACED CORNER BY POSSESSION. SET 1" PIPE 3' LONG IN CONCRETE PAV'MNT. .4' E OF THE CENTER OF SAME. SHOWS 2658.2 TO SE CORNER AND 2648.5 TO NE CORNER OF SECTION 22.
- 19?? SURVEYOR UNKNOWN VOL 5 PG 493 STATES THAT B.J. PLACED PIPE AS STATED IN VOL 3 PG 218. SHOWS A DISTANCE OF 2669.8 TO CENTER OF SECTION 23, 2625.48 TO CENTER OF SEC 22, 2651.22 TO SE COR SEC 22, AND 2650.56 TO NE COR. OF SEC 22.
- 1969 BATTERMAN JR. VOL 4 PG 416 FD PIPE JUST BELOW BLKTP. .4 E OF CENTER LINE IN LINE WITH 3/W FENCES AT E 1/4 CORNER SECTION 22. REFERENCED CORNER.
- 1983 BARNES FOUND PIPE AND CONNECTED TO TOWNSHIP PROJECT.
- 1989 BARNES P 17 I FOUND SUNNY'S PIPE WHICH WAS BENT. I REFERENCED SAME. HIS PIPE IS NOT AT PROPORTIONATE MEASUREMENT WITH RUGER'S REMONUMENTATION DISTANCES. IT IS DIFFERENT BY 3.21'. SINCE I DID NOT FIND THE CUT LIMESTONE, I ACCEPTED SUNNY'S PIPE. IN MY OPINION I DID NOT HAVE ACCEPTABLE EVIDENCE TO REJECT SUNNY'S ACCEPTANCE OF THE E/W FENCE LINES.

FOUND DISK THAT DOT CONSULTANTS PLACED.

C) Was the corner restored through acceptance of (1) an obliterated evidence location, or, (2) a found perpetuated location?

CORNER WAS RESTORED THROUGH ACCEPTANCE OF AN OBLITERATED EVIDENCE LOCATION.

D) Describe any material discrepancy between the location of the corner as restored or reestablished and the location of that corner as previously restored or reestablished by distance and direction. Show the discrepancy on the plan view drawing under (a), above. Show the distances between the corner as previously restored or reestablished and (1) the corner as restored or reestablished, and (2) to at least 4 of the witness monuments shown on the drawing in (a), above.

(E) Was the corner reestablished through lost corner proportionate methods? If so, show the method, including the directions and distances to other public land survey corners used as evidence or used for proportioning the corner location.

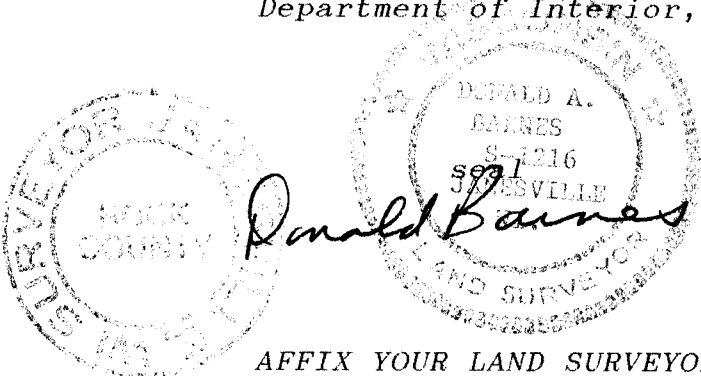
Donald Barnes



20F 3

P(17) (A)

I, Donald Barnes, hereby certify that the corner points as identified by the corner code index were, in a field survey on, September 16, 1991, established, re-established, monumented, re-monumented, recovered or restored as expressed below and in conformance with the regulations and rules as required in the current manual of survey instructions of the United States Department of Interior, Bureau of Land Management.



AFFIX YOUR LAND SURVEYOR SEAL

COUNTY SURVEYOR FILING DATA

Date of computer entry _____

Date microfilmed _____

Number of included sheets _____
CORNER CODE

3 OF 3

P 17 (A)