

(B) Describe any record evidence, monument evidence, occupational evidence, testimonial evidence or any other material evidence you considered, and whether the monument was found or placed.

- 1833 LYONS ORIGINAL SURVEYOR. SET A POST FOR CORNER TO SECTIONS 35 & 36. BUR OAK 12 N49W 97.02; BLACK OAK 16 N35W 80.52.
- 1838 SPALDING FIELD NOTES PG 878. INTERSECTED THE NORTH BOUNDARY OF THE STATE OF ILL. 1166.22' WEST OF THE CORNER TO SECTION 35 & 36 T1N R13 7 14E OF THE 4TH P.M. AT SAID INTERSECTION SET A POST FOR CORNER TO SECTION 5 & 6 T46N R3E. ORIGINAL PLAT CALLS FOR 1166.22'
- 1848 WHEELER VOL 6 PG 407 TERRITORIAL ROAD RECORDS. CALLS FOR THE ROAD TO BE 33 FEET NORTH OF THE STATE LINE.
- 1978 BARNES VOL 5 PG 462 PLACED ALUM. MON. ON LINE WITH THE S 1/4 COR SEC 36 AND THE NE COR SEC 1 T46N R2E AT SINGLE PROPORTIONATE MEASUREMENT. DUG & FOUND OLD ROAD 4' DEEP.
- 1978 BARNES VOL 5 PG 456 CALLS FOR 2642.90 TO S 1/4 CORNERS OF SEC 35 & 36.
- 1991 BARNES Z-21 FOUND ALUM. MON. REMOVED TOP PART AND INSTALLED ALUMINUM MONUMENT AT INTENDED LOCATION.

FOUND ALUM. MON. & TIES. MONUMENT IS 6' SOUTH OF THE NORTH PAVEMENT EDGE. 1172.16 (REC 1166.22) EAST OF THE NW COR SEC 5.

C) Was the corner restored through acceptance of (1) an obliterated evidence location, or, (2) a found perpetuated location?  
ACCEPTED FOUND ALUM. MON.

D) Describe any material discrepancy between the location of the corner as restored or reestablished and the location of that corner as previously restored or reestablished by distance and direction. Show the discrepancy on the plan view drawing under (a), above. Show the distances between the corner as previously restored or reestablished and (1) the corner as restored or reestablished, and (2) to at least 4 of the witness monuments shown on the drawing in (a), above.

(E) Was the corner reestablished through lost corner proportionate methods? If so, show the method, including the directions and distances to other public land survey corners used as evidence or used for proportioning the corner location.  
NO

I, Donald Barnes, hereby certify that the corner points as identified by the corner code index were, in a field survey on, 1994, established, re-established, monumented, re-monumented, recovered or restored as expressed below and in conformance with the regulations and rules as required in the current manual of survey instructions of the United States Department of Interior, Bureau of Land Management.

seal

*Oct 6, 1995*  
*Donald Barnes*

COUNTY SURVEYOR FILING DATA

Date of computer entry \_\_\_\_\_

Date microfilmed \_\_\_\_\_

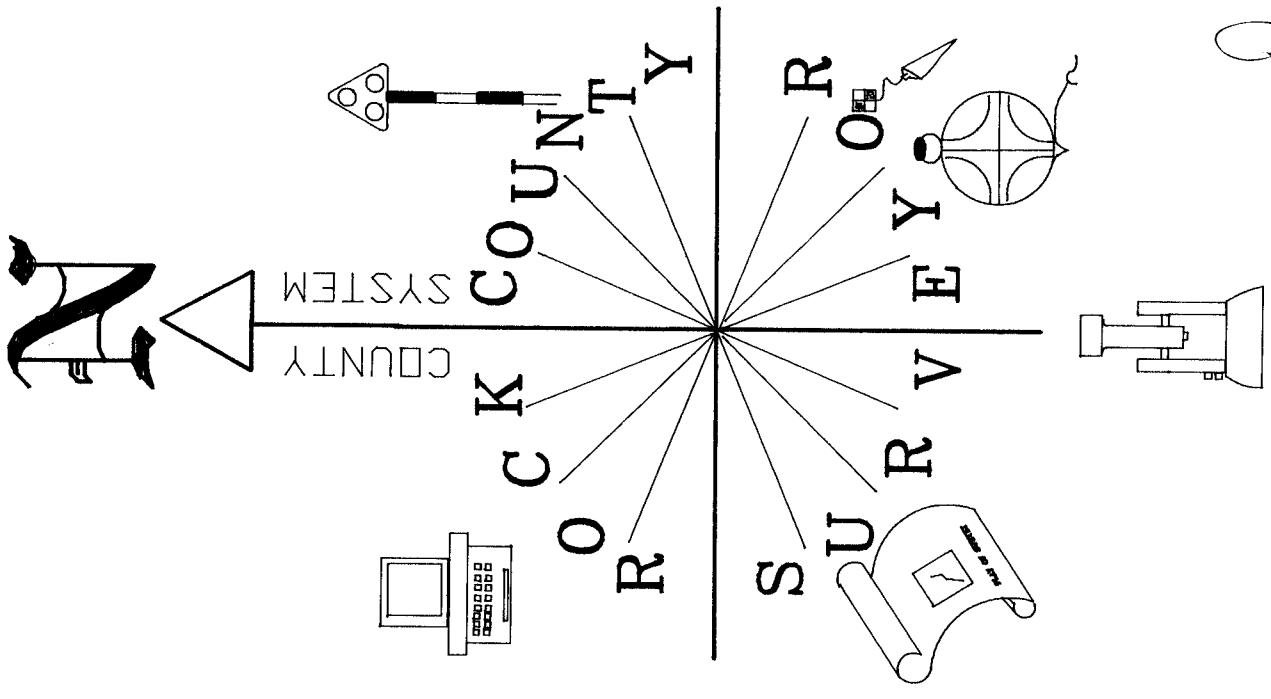
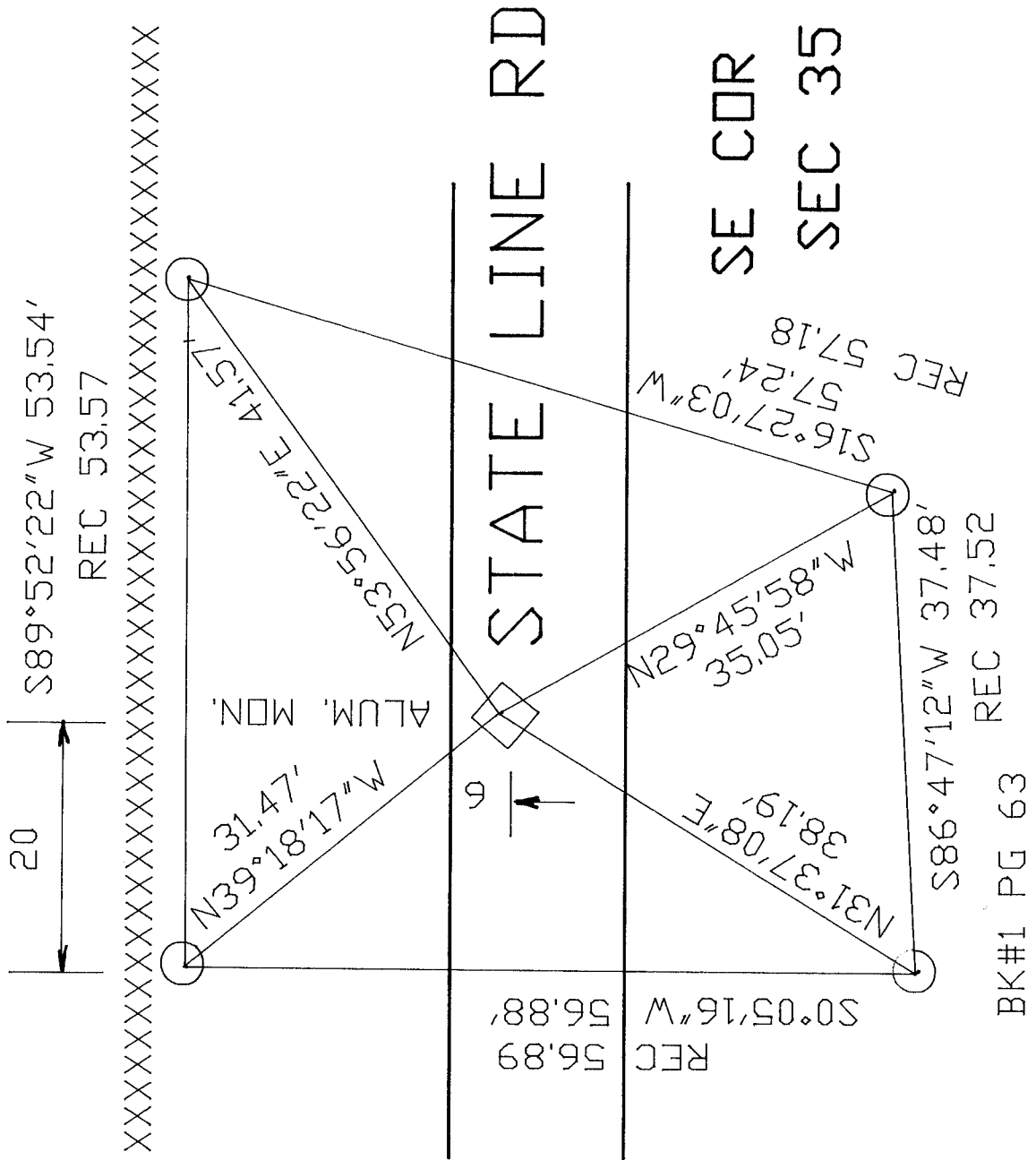
Number of included sheets \_\_\_\_\_  
CORNER CODE

EMBOSS LAND SURVEYOR SEAL

A-E 7.08 REQUIREMENT

*ZZ/11*

221(1)



*Donald Barnes*  
*OCT 6, 1995*