

Paper weight-110# (minimum)

Black nonfading ink required

U.S. PUBLIC LAND SURVEY MONUMENT RECORD

For Public Land Survey Corners In:

WI ADMINISTRATIVE CODE A-E 7.08 REQUIREMENT

T. 4N. R. 12E. 4th P.M.

REV 10/23/2004

USMONREC.DWG

CORNER CODE INDEX

FULTON TWP

ROCK COUNTY WI

IF AVAILABLE

ROCK COUNTY COORDINATES PREFERRED

1	2	3	4	5	6	7	8	9	10	11	12	13	14	15	16	17	18	19	20	21	22	23	24	25	
A																									A
B	6					5					4				3					2				1	B
C																									C
D																									D
E																									E
F																									F
G	7					8					9				10					11				12	G
H																									H
J																									J
K																									K
L	18					17					16				15					14				13	L
M																									M
N																									N
O																									O
P	19					20					21				22					23				24	P
Q																									Q
R																									R
S																									S
T	30					29					28				27					26				25	T
U																									U
V																									V
W																									W
X	31					32					33				34					35				36	X
Y																									Y
Z																									Z

North _____ Elev. _____

East _____

Hor. Datum _____ Vert. Datum _____

LATITUDE _____ ELLIPS. HT. _____

LONGITUDE _____

NAD83(91) _____ NETWORK ADJ. YR _____

GPS (X) _____ TRAVERSE (X) _____

BASED ON THE FOLLOWING CONTROL:

PLACE MONUMENT SYMBOL AT PROPER LOCATION ON ABOVE INDEX

CORNER MONUMENT

WITNESS MONUMENT

(a)

BEARINGS ARE BASED ON: _____

FIELD BOOK _____ PAGE # _____

SHEET 1 OF 4

SHOW A PLAN VIEW DRAWING DEPICTING THE CORNER MONUMENT AND SURROUNDING PHYSICAL FEATURES, INCLUDING THE EXCAVATION AREA AND DEPTH.

PLANNING & ZONING COMMITTEE ADOPTED THIS FORM ON 12/2/1982

CORNER CODE R-21(1)

FU591 ^

(B) Describe any record evidence, monument evidence, occupational evidence, testimonial evidence or any other material evidence you considered, and whether the monument was found or placed.

- 1836 (JULY) BURNHAM NORTH BETWEEN SECTIONS 23 & 24
1282.38 BUR OAK 12 IN DIA
2640 SET 1/4 SEC POST W. OAK 16 S28 1/2W 50.82'? NO OTHER BEARING
NO STATIONS
5280 SET POST COR TO 13,14, 23,24 BUR OAK 12 N5 1/2E 25.08' BUR OAK 12 S14 1/2W 16.5' FIRST RATE W. Y. & BUR OAK OPENINGS
- 1836 (JULY 11) BURNHAM EAST RANDOM BETW SECS 23 & 26
5270.1 INT EAST BDY 19.8' NORTH
WEST 1/2 FIRST RATE BUR OAK OAK OPENINGS GENTLY ROLLING- EAST 1/2 GOOD 2ND RATE W & BUR OAK OPENINGS BEING BROKEN
WEST CORRECTED BETWN SEC 23 & 26
2634.72 SET 1/4 SEC POST BUR OAK 12 N24W 19.8' BUR OAK 12 S70E 11.88'
4660.26 BUR OAK 10 IN DI
5270.1 TO CORNERS JULY 11 1836
- 1836 (JULY 10) BURNHAM EAST RANDOM BETWN SEC 24 & 25
5273.4 INT. RANGE LINE AT STAKE WEST HALF BROKEN EAST 1/2 FIRST RATE BUR OAK OPENINGS GENTLY ROLLING
WEST MARKED LINE BETWN 25 & 24
NO STATIONS
2636.7 SET 1/4 SEC POST BUR OAK 16 N52 1/2E 89.1' NO OTHER BEARING
5273.4 TO CORNER
- 1836 (JULY) BURNHAM NORTH BETWEEN SECTIONS 25 & 26
1279.08 DOUBLE W. OAK 20 IN DI
2640 SET 1/4 SEC POST BUR OAK 12 S22W 41.58'; BUR OAK 8 N43W 36.96'
2970 BUR OAK 12 IN DI
4847.7 Y. OAK 30 IN DI
5280 SET POST COR TO 23,24,25&26 W. OAK 12 S56 1/2E 39.6', W. OAK 18 S33 1/2W 25.74'
SOUTH HALF FIRST RATE BUR OAK OPENINGS
NORTH HALF VERY BROKEN W. Y & BUR OAK OPENINGS
- 1846 STEBBINS TWP RD BK 1 PG 7 BEGINNING AT A POINT ON THE SECTION LINE BETWEEN SECTION 24 & 25 T4R12E 1518' EAST OF THE NW COR OF SEC 25, THENCE WEST ON SECTION LINE 621.06'; THENCE N8 1/2W 396', N60 3/4W 528'; THENCE N73 1/2W 487.74'; THENCE N85 1/2W 726'; THENCE S88 1/2W 759'; THENCE N84 1/2W 615.78'; THENCE S84 1/2W 386.1'; THENCE N51 1/2W 594'; THENCE N75W 2300.1' TO THE SECTION LINE BETWEEN 22 & 23 803.22' SOUTH OF THE 1/4 POST [E 1/4 COR SEC 22] ON SAID LINE AND THE WHOLE LENGTH OF THE RD IS 7,413.78'. COURSE GIVEN ACCORDING TO THE TRUE MERIDIAN VARIATION OF NEEDLE 7 3/4
- 1864 LOCKE VOL 1 PG 220 & #1341 FD B. TREES & OLD STAKE READ DISTANCE TO BTS THE ONE FOR THE OTHER. SET LIMESTONE 25X7X3 VAR 8-10 2641.32 TO N 1/4 COR SEC 25, VAR 7-50 2643.30 TO W 1/4 COR SEC 25.
- 1885 RUGER VOL 2 PG 383 & #1332 FD LIMESTONE SET BY LOCKE & STUMP OF SW BT & REMAINS OF STUMP OF SE BT VAR 5-41 2642.31 TO S 1/4 COR SEC 23. VAR 5-27 2648.58 TO E 1/4 COR SEC 23, 777.04' SOUTH OF CENTERLINE OF HWY. 1262.25 SOUTH OF (CENTER OF R/R RW OR SOUTH R/R RW LINE)

Donald Baumes

8-24-07

PAGE 1 OF 4
CORNER CODE R-21(1)

FU591

- 18?? ???? #1332 L.S. 25X7X3 2626.14 TO E 1/4 COR SEC 23;
777.04' SOUTH OF 9X8X2 1/2 LS IN CENTER OF HWY, 1262.25
SOUTH OF CENTER OF R/R. 8X7X6 LS ON SOUTH R/W LINE OF
R/R & 11X9X6 LS. ON NORTH SIDE OF R/W LINE OF R/R.
COR. SEC 23
- 1896 BROWN VOL 2 PG 501 LIMESTONE 25X7X3
- 1938 DOT #11563,1564,7123,4721,5443,7124 STATES NOTHING
ABOUT MON. SHOWS CENTER OF STH 51 660' EAST OF SE
- 1969 DOT #11191 CTH M STATES NOTHING ABOUT MON. 709.34 TO
TAN.
- 1971 LEE VOL 4 PG 522 REPLACED REC. STONE WITH CI MON
LARGE HH ON N. SIDE & SMALL LIMESTONE S. SIDE @ FENCE
INT. SOUTH OF CTH M.
- 1971 COMBS CSM VOL 2 PG 127 C.I. NORTHERLY 389.0' TO SOUTH
R/W LINE OF CTH M
- 1972 LEE #1388 LEGEND CALLS FOR SETTING PIPE. 2635.88 TO N
1/4 COR SEC 26, ANGLE 179-41-36 @ N 1/4 COR SEC 26 FROM
NE COR SEC 26 TO NW COR SEC 26.
- 1972 COMBS #13245 CI ANGLE 90-03 FROM HH AT E 1/16TH COR OF
NE 1/4 OF SEC 26 TO N 1/16TH COR OF NE 1/4 SEC 26, 2635.8
TO N 1/4 COR SEC 26, 2646.40 TO E 1/4 COR SEC 26, 1318.40
TO N 1/16TH COR OF NE 1/4 SEC 26
- 1973 COMBS CSM VOL 3 PG 31 C.I. WESTERLY 1318.40 TO 1/16TH
COR.
- 1974 LEE CSM VOL 4 PG 16 WESTERLY 1318.36 TO 1/16TH
COR.
- 1975 COMBS "PINEVIEW ESTATES" BK 27 PG 29 CI NE COR OF LOT
4 S86-55-50W 406.02 TO A LOT COR, S03-07-10E 581.40 TO
A LOT COR.
- 1976 COMBS CSM VOL 5 PG 194 STATES NOTHING ABOUT MON.
WESTERLY 1318.4X TO 1/16TH COR.
- 1976 COMBS CSM VOL 6 PG 137 C.I. ANGLE @ SE COR SEC 23
FROM SOUTH LINE OF SE 1/4 OF SEC 23 TO EAST LINE OF SE 1/4
OF SEC 23 IS 89-47-18, COR IS ALSO THE SE COR OF LOT 2,
NORHTERLY 831.2 TO A PIPE ON THE SOUTH R/W LINE OF CTH
M. & WESTERLY 765.8 TO A PIPE AT THE SW COR OF LOT 2.
- 1977 COMBS #12912 M.I. INSPECTION. STATES NOTHING ABOUT
MON. WESTERLY 1318.4 TO 1/16TH COR.
- 1977 BARNES VOL 5 PG 285 FD CI. MON & REF SAME. ON SOUTH
SIDE OF FENCE INT.
- 1977 BARNES VOL 5 PG 288 FD CI. SHOWS REC DISTANCES.
- 1978 BARNES VOL 5 PG 486 SHOW REC. DISTANCES
- 1984 BRYANT CSM VOL 11 PG 473 CI
- 1988 COMBS CSM VOL 13 PG 218 C.I.
- 1988 COMBS CSM VOL 13 PG 257 FD PIPE
- 1990 BARNES VOL 6 PG 406 SHOWS REC. DISTANCES
- 1992 COMBS #11429 FD 2" PIPE.
- 1995 LATHROP CSM VOL 18 PG 102 C.I. 2636.80 TO N 1/4 COR SEC
26
- 1997 THOM #8354 FD ALUM. MON., 2644.11 TO N 1/4 COR OF SEC
25 ANGLE OF 90-34-50 @ NW OF SEC 25 FROM N 1/4 COR SEC
25 TO FD STONE OF RECORD AT NW COR OF LOT CSM VOL 13
PG 257 (581.60)
- 2002 BARNES R-21 THE ALLIANT ENERGY COM. PROVIDED THE
FOLLOWING STATE PLANE COORDINATES. THEY WERE
DETERMINED BY RTK GPS. I CONVERTED THEM TO ROCK
COUNTY PROJECTION. 289,141.77N/S; 2,228,012.16E/W
307,868.44; 490,473.02

Donald Barnes

8-21-07

FU591

I FOUND A CI MON. & S30-18-27W 0.36' FD 2" PIPE. I SET A CARSONITE ON NORTH SIDE OF CI.

C) Was the corner restored through acceptance of (1) an obliterated evidence location, or, (2) a found perpetuated location?

ACCEPTED FD CI.

D) Describe any material discrepancy between the location of the corner as restored or reestablished and the location of that corner as previously restored or reestablished by distance and direction. Show the discrepancy on the plan view drawing under (a), above. Show the distances between the corner as previously restored or reestablished and (1) the corner as restored or reestablished, and (2) to at least 4 of the witness monuments shown on the drawing in (a), above.

SEE DRAWING.

IN 1971 LEE REPLACED THE RECORD STONE LARGE HH ON N. SIDE & SMALL LIMESTONE S. SIDE WITH A CI MON. IN 1988 COMBS (CSM VOL 13 PG 218) FOUND A C.I., BUT LATER IN 1988 HE (CSM VOL 13 PG 257) FOUND A PIPE. IN 1992 COMBS ON MAP #11429 HE STATES HE FOUND A 2" PIPE.

I WAS UNABLE TO DETERMINE WHO PLACED THE 2" PIPE.

(E) Was the corner reestablished through lost corner proportionate methods? If so, show the method, including the directions and distances to other public land survey corners used as evidence or used for proportioning the corner location.

NO

I, **Donald Barnes**, hereby certify that the corner location as identified by the corner code index was determined by me under my direction and control and that this U.S. Public Land Survey Monument Record is correct and complete to the best of my knowledge and belief.

Donald Barnes
Seal
Barnes
Emboss

SHEET 3 OF 4

8-21-07

CORNER CODE

R-21 (1)

A.E. 7.08 REQUIREMENT

NE COR
SEC 26
FULTON TWP
T4N R12E

CTH M

HSE

WOODS

18" DEAD TREE

1975 BK27-29 406.02

PINEVIEW ESTATES
LOT 4
BK 27 PG 29

SET CARBONITE
NORTH SIDE
FD C.I.

PIPE IS 0.1'
HIGHER THAN CI
N30-18-27E
0.36

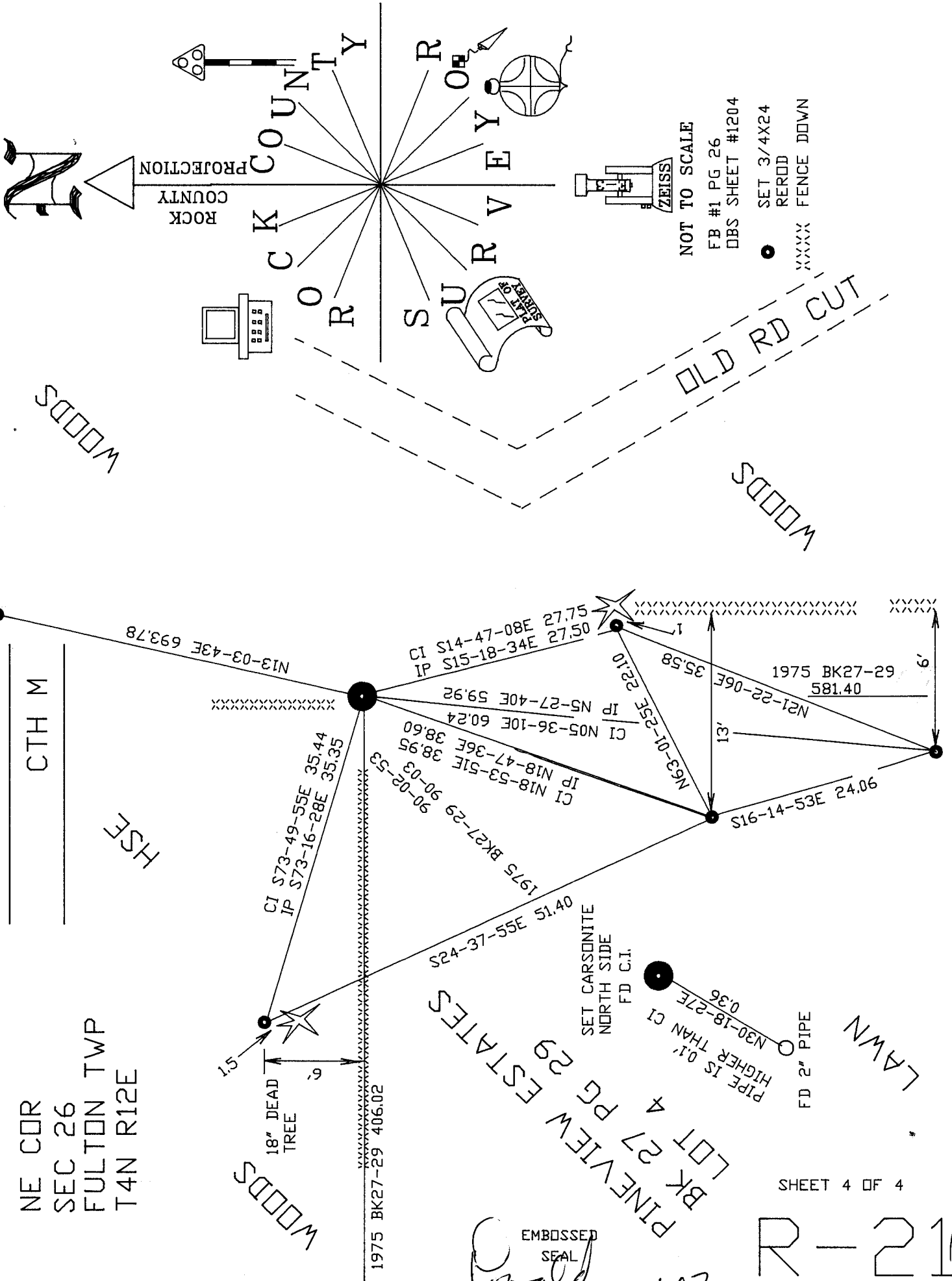
FD 2" PIPE

LAWN

SHEET 4 OF 4

R-21(1)

EMBOSSSED SEAL
Ronald Barnes
8-21-07

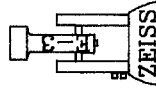
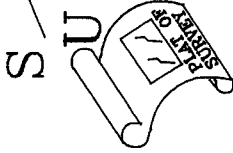
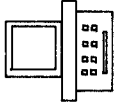


N

ROCK COUNTY
PROJECTION

ROCK COUNTY

SURVEY



NOT TO SCALE

FB #1 PG 26
DBS SHEET #1204

● SET 3/4X24
REROD
XXXX FENCE DOWN

WOODS

OLD RD CUT

WOODS