

U.S. PUBLIC LAND SURVEY MONUMENT RECORD

For Public Land Survey Corners In: WI ADMINISTRATIVE CODE A-E 7.08 REQUIREMENT

T. 4 N. - R. 13 E. of the 4th P.M.

CORNER CODE INDEX

(PLACE "◆" SYMBOL AT PROPER PLSS CORNER LOCATION)

A	1	2	3	4	5	6	7	8	9	10	11	12	13	14	15	16	17	18	19	20	21	22	23	24	25	A
B																										B
C	6																					◆				C
D																										D
E																										E
F																										F
G	7																									G
H																										H
J																										J
K	18																									K
L																										L
M	18																									M
N																										N
O																										O
P	19																									P
Q																										Q
R																										R
S																										S
T	30																									T
U																										U
V																										V
W																										W
X	31																									X
Y																										Y
Z																										Z
	1	2	3	4	5	6	7	8	9	10	11	12	13	14	15	16	17	18	19	20	21	22	23	24	25	

MILTON TWP
ROCK COUNTY WI

COORDINATES

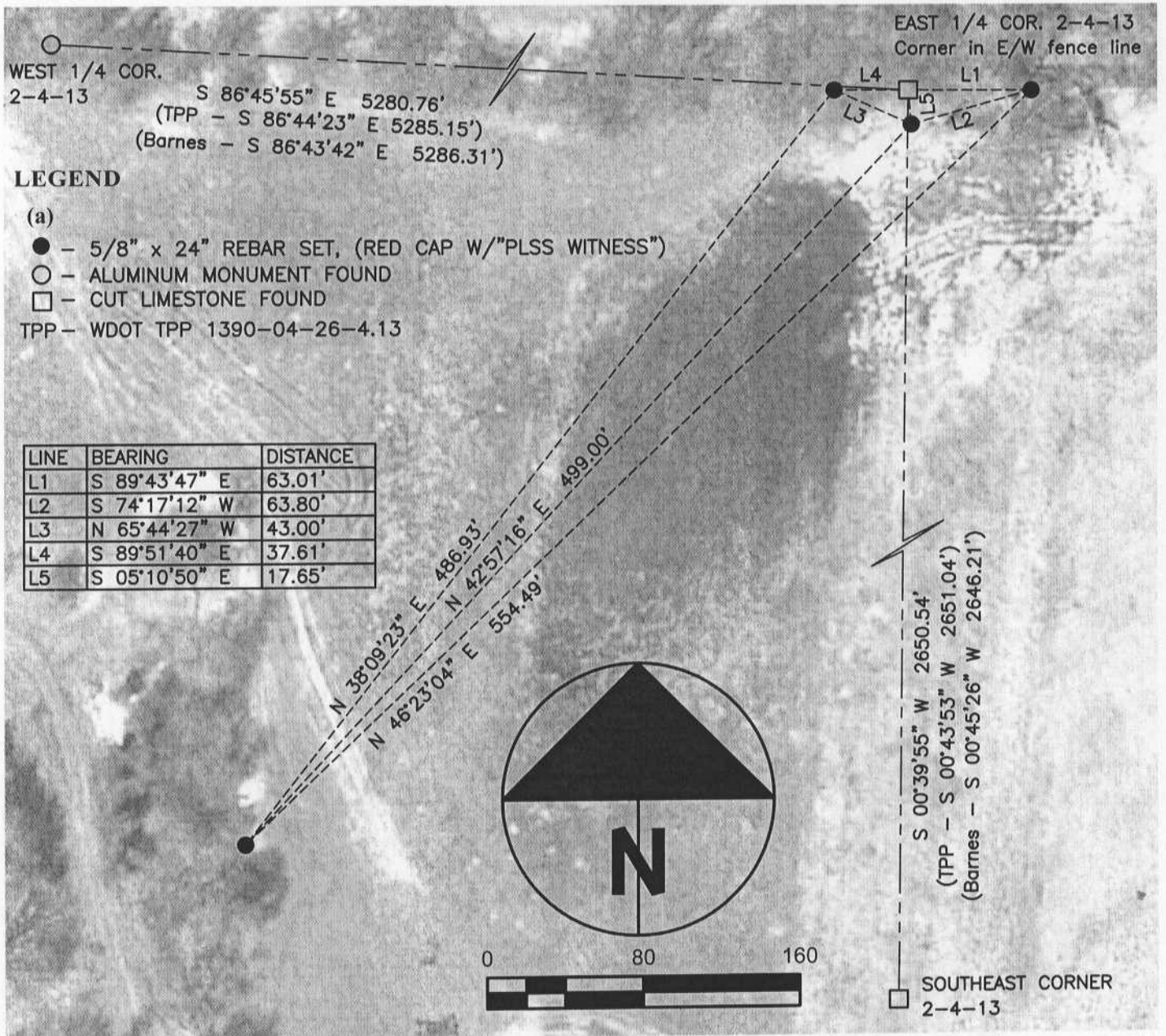
(GNSS DERIVED VIA WISCORS)

NORTHING: 325460.92 ELEV: N/A

EASTING: 522216.76

Hor. Datum: WCCS-ROCK, (NA2011)

Vertical Datum: NAVD 88, (If applicable)



B) Describe any record evidence, monument evidence, occupational evidence, testimonial evidence or any other material evidence you considered, and whether the monument was found or placed.

I found the cut stone of record.

C) Was the corner restored through acceptance of (1) an obliterated evidence location, or, (2) a found perpetuated location?

Found perpetuated location.

D) Describe any material discrepancy between the location of the corner as restored or reestablished and the location of that corner as previously restored or reestablished by distance and direction. Show the discrepancy on the plan view drawing under (a), above. Show the distances between the corner as previously restored or reestablished and (1) the corner as restored or reestablished, and (2) to at least 4 of the witness monuments shown on the drawing in (a), above.

The stone is referenced on an August '82 Don Barnes Monument Record however, no witness monuments were set at the time the record was filed. Most recently, the monument is referenced on a WDOT TPP Plat, (1390-04-26-4.13), with coordinates and bearings/distances to other PLSS corners flowing out from the same. Coordinates for the corner published by this office are in error and correspondence with the WDOT indicates coordinates, furnished by this office in 2006, were the basis for their platting. Current fieldwork misses the current coordinates by 4.55' N/S and 4.57' E/W. The referenced TPP plat has coordinates close to these, (1 ft. +/-, N/S), along with similar bearings /distances to other PLSS corners.

The other PLSS corners identified on my map, (West ¼ and SE corners of 2-4-13), have recent tie sheets, (Past 3 years), filed. The monuments identified on those exist today and ties/coordinates verify that fact. It is apparent that some type of error in past fieldwork exists and that error was incorporated into the WDOT TPP plats. Subsequent least squares adjustments have changed the coordinates from those previously furnished to the WDOT to the values that exist today. The extent to which any blunders/errors impact coordinates in and around this location is not known nor will I attempt to resolve any coordinate problems. The coordinates are the result of land traverses data entered into a DOS program and adjusted after that. Surveyors must survey existing monuments, per statutes, and view any coordinates as a tool to use when searching for corners.

This tie-sheet lists the WCCS ROCK DATUM (NA2011) coordinates derived by way of GNSS surveying via WISCORS along with current / past bearings / distances to other PLSS corners. My fieldwork is in harmony with recent fieldwork completed in the area by Ryan Combs of Combs & Associates, Inc., Janesville, WI.

I accepted the cut stone as shown on the map and referenced per the sketch.

(E) Was the corner reestablished through lost corner proportionate methods? If so, show the method, including the directions and distances to other public land survey corners used as evidence or used for proportioning the corner location.

N/A

I, Jason R. Houle, hereby certify that the corner location as identified by the corner code index was determined by me under my direction and control and that this U.S. Public Land Survey Monument Record is correct and complete to the best of my knowledge and belief.

CORNER CODE: C21-(1)
(A.E. 7.08 REQUIREMENT)

