

Paper weight-110# (minimum)

Black nonfading ink required

# U.S. PUBLIC LAND SURVEY MONUMENT RECORD

For Public Land Survey Corners In:  
T. 2 N. R. 13 E. 4th P.M.

WI ADMINISTRATIVE CODE A-E 7.08 REQUIREMENT

REV 10/23/2004 USMONREC.DWG

### CORNER CODE INDEX

A	1	2	3	4	5	6	7	8	9	10	11	12	13	14	15	16	17	18	19	20	21	22	23	24	25	A
B		6				5				4				3				2			1					B
C																										C
D																										D
E																										E
F																										F
G																										G
H																										H
J																										J
K																										K
L																										L
M																										M
N																										N
O																										O
P																										P
Q																										Q
R																										R
S																										S
T																										T
U																										U
V																										V
W																										W
X																										X
Y																										Y
Z																										Z

PLACE MONUMENT SYMBOL  AT PROPER LOCATION ON ABOVE INDEX

LA PRAIRIE TWP  
ROCK COUNTY WI

IF AVAILABLE  
ROCK COUNTY COORDINATES PREFERRED

North \_\_\_\_\_ Elev. \_\_\_\_\_

East \_\_\_\_\_

Hor. Datum \_\_\_\_\_ Vert. Datum \_\_\_\_\_

LATITUDE \_\_\_\_\_ ELLIPS. HT. \_\_\_\_\_

LONGITUDE \_\_\_\_\_

NAD83(91) \_\_\_\_\_ NETWORK ADJ. YR \_\_\_\_\_

GPS (X) \_\_\_\_\_ TRAVERSE (X) \_\_\_\_\_

BASED ON THE FOLLOWING CONTROL:

CORNER MONUMENT

WITNESS MONUMENT

BEARINGS ARE BASED ON: \_\_\_\_\_

FIELD BOOK \_\_\_\_\_ PAGE # \_\_\_\_\_

SHEET 1 OF 4

SHOW A PLAN VIEW DRAWING DEPICTING THE CORNER MONUMENT AND SURROUNDING PHYSICAL FEATURES, INCLUDING THE EXCAVATION AREA AND DEPTH.

PLANNING & ZONING COMMITTEE ADOPTED THIS FORM ON 12/2/1982

CORNER CODE 2-3(1)

**LA622 S1/4CORSEC31**

*(B) Describe any record evidence, monument evidence, occupational evidence, testimonial evidence or any other material evidence you considered, and whether the monument was found or placed.*

- 1835 BRINK NOV 23 WEST SOUTH SIDE SECTION 31 T2N R13E  
2640.00 SET QUARTER SECTION POST IN PRAIRIE IN  
MOUND PIT EAST OF POST 3.96  
3795.00 ARMY TRAIL C N.NE.  
5235.78 INTERSECTED RANGE LINE NORTH OF  
TEMPORARY 6 MILE 447.48' SET POST AT  
INTERSECTION CORNER TOWNSHIPS 1 & 2  
NORTH RANGES 12 & 13 EAST IN PRAIRIE IN  
MOUND 6 FEET SQUARE & FOUR FEET HIGH PIT  
SOUTH OF POST 9.24' LAND & SAME. NOV 23  
1835
- 1865 LOCKE VOL 1 PG 235 @ N 1/4 COR SEC 6 FD STAKE SET BY  
AS COL. MILLER ON CORNER. 3016.20 TO W. BAR POST  
ABOUT 3 INCHES N. OF CENTER. 5655.21 TO S 1/4 COR  
SEC 6, 2629.66 FROM CENTER TO E 1/4 COR SEC 6, &  
2366.32 FROM CENTER TO W 1/4 COR SEC 6.
- 1871 RUGER REMONUMENTATION PG 219 & 220.  
EAST ON SOUTH LINE OF SW 14 OF SEC 31 ON A  
VAR 5-10 AT  
2590.17 INTERSECTED 1/4 LINE AT 1/4 COR FOUND OLD  
STAKE A COR.  
EAST ON SOUTH LINE OF SE 1/4 OF SEC 31 ON A  
VAR 4-53 AT  
2637.36 INTERSECTED EAST BOUNDARY LINE 1.98' SOUTH  
OF COR FOUND STAKE SURROUNDED BY 3 HARD  
HEAD STONES AT COR. COR VAR 4-56.
- 1881 HOLMES VOL 2 PG 338 2591.16 FROM S 1/4 COR SEC 31  
TO SW COR SEC 31, 2635.38 TO SE COR SEC 31, USED TO  
SUBDIVIDE SEC 31. CENTER OF SEC 31 TO E 1/4 COR SEC  
31 IS 2635.38 & 2611.62 FROM CENTER TO W 1/4 COR SEC  
31.
- 1893 BLEEDORN VOL 2 PG 480 CALLS FOR "MON" @ S 1/4 COR  
SEC 31. VAR 3-30 TO MON @ N 1/4 COR SEC 31, 2649.90  
TO SW COR SEC 31.
- 1960 BATTERMAN VOL 4 PG 54 FD 6"X6" CUT LIMESTONE @ S 1/4  
COR SEC 31. REFERENCED SAME.
- 1968 HENKE CSM VOL 1 PG 172 R/R SPIKE @ S 1/4 COR SEC 31.  
@ S 1/4 COR SEC 31 FROM SOUTH LINE OF SEC SW 1/4 SEC  
31 S88-45W & NORTH 33.01 TO PIPE (SE COR CSM LOT)
- 1971 SCHIMEALL CSM VOL 2 PG 137 PIN @ N 1/4 COR SEC 6.  
CSM LOT COR IS 4.00 TO THE EAST. SHOWS 33' @ R/W &  
40.00 R/W @ LOT COR. CALLS FOR PIPE 40.00 SOUTHERLY  
OF S 1/4 COR SEC 31, & 159.04 FROM S 1/4 COR SEC 31  
TO PIPE @ NW COR OF CSM LOT
- 1986 BARNES A-3 @ N 1/4 COR SEC 6 FD R/R SPIKE & REPLACED  
IT WITH A POLY MON. THE MON. IS WITHIN 0.68' OF THE  
PRORATION OF THE ORIGINAL GOV. PLAT DISTANCES AND  
THE MEASURED DISTANCES. S89-43-21E 2427.32 TO NW  
COR SEC 6, S89-55-42E 2636.35 TO NE COR SEC 6. 163.06  
WEST OF THE S 1/4 COR SEC 31. S89-43-26W 2590.38  
FROM S 1/4 COR TO SW COR SEC 36 & S89-54-24E 2636.98  
TO SE COR SEC 31. REFERENCED SAME.
- 1986 BARNES Z-3 @ TH S 1/4 COR SEC 31 FD R/R SPIKE &  
REFERENCED WITH PK 1.00 TO THE EAST & A PK 1.00 TO  
THE NORTH. 1/2 DEEP FD A R/R SPIKE WHICH WAS 0.97'  
FROM THE EAST PK & 0.92 FROM THE NORTH PK. 1.2' FD  
GUT LIMESTONE. THE STONE IS 1.04' FROM THE EAST PK &  
1.00' FROM THE NORTH PK. FD RECORD REFERENCE PIPES @  
THE S 1/4 COR SEC 31. REPLACED THE NW REFERENCE  
PIPE. @ THE N 1/4 COR SEC 6 REFERENCED THE CORNER.  
FD PIPE JUST EAST OF THE N 1/4 COR SEC 6. 163.04  
BETWEEN THE LS & THE N 1/4 COR SEC 6. SET POLY MON

*Donald Buens*  
7/23/2010

LA622 S1/4CORSEC31  
 ON TOP OF THE STONE. FD PIPE IS THE LOT CORNER OF  
 CSM VOL 2 PG 137. S 1/4 COR SEC 31 ELEV 825.2.  
 214,511.52; 2,268,943.09

1988 FARRIS #12404 @ S 1/4 COR SEC 31 FD ALUM DISK IN  
 AGREEMENT WITH MON. REC. TIES. 214,511.52;  
 2,268,943.09. SB9-43-26W 2590.34 TO FD PK @ SW COR  
 SEC 31 & N1-35-35W 2638.82 TO CENTER OF SEC 31.

1990 LEE CSM VOL 15 PG 21 S 1/4 COR SEC 31 TO MON BOX @  
 SW COR SEC 31 IS N88-40-57W & NORTH FROM S 1/4 COR  
 SEC 31 ALONG 1/4 LINE.

1994 COMBS #9581 FD ALUM. @ N 1/4 COR SEC 6 & S 1/4 COR  
 SEC 31. N89-26-20E 159.04 BETWEEN S 1/4 COR SEC 31 &  
 FD PIPE. SB9-26-20W 4.00 FROM FD PIPE TO FD ALUM @ N  
 1/4 COR SEC 6. FROM PIPE SD-11-45E 33.0 TO PIPE @  
 PROP. COR.

1995 WPL (BARNES ) Z-3 (1) LAT(1983) 42-35-2.931803 ; LONG  
 89-00-05.5612315. COUNTY CONVERTED BY ME  
 233,142.754; 499,035.443. THESE ARE THE N 1/4 COR  
 SEC 6. (2010 ADJUSTMENT 233,142.945: 499,035.62)

@ N 1/4 COR SEC 6 FD POLY. & @ S 1/4 COR SEC 31 FD POLY WITH  
 TOP BROKE OFF. FD PIPE NEAR N 1/4 COR SEC 6. FD PIPE IS CSM  
 LOT COR (1971 CSM VOL2 PG 137) & WAS NOT INTENDED TO BE 1/4  
 COR. AFTER NEW PVMT I PLACED SURVEY SPIKE STAMPED "SURVEY  
 MARKER" @ EACH 1/4 CORNER.

C) Was the corner restored through acceptance of (1) an obliterated evidence location, or, (2) a found  
 perpetuated location?

ACCEPTED FD POLY. ~~ALUM~~ WHICH IS ON THE CUT L.S.

D) Describe any material discrepancy between the location of the corner as restored or reestablished  
 and the location of that corner as previously restored or reestablished by distance and direction. Show  
 the discrepancy on the plan view drawing under (a), above. Show the distances between the corner as  
 previously restored or reestablished and (1) the corner as restored or reestablished, and (2) to at least 4  
 of the witness monuments shown on the drawing in (a), above.

NONE

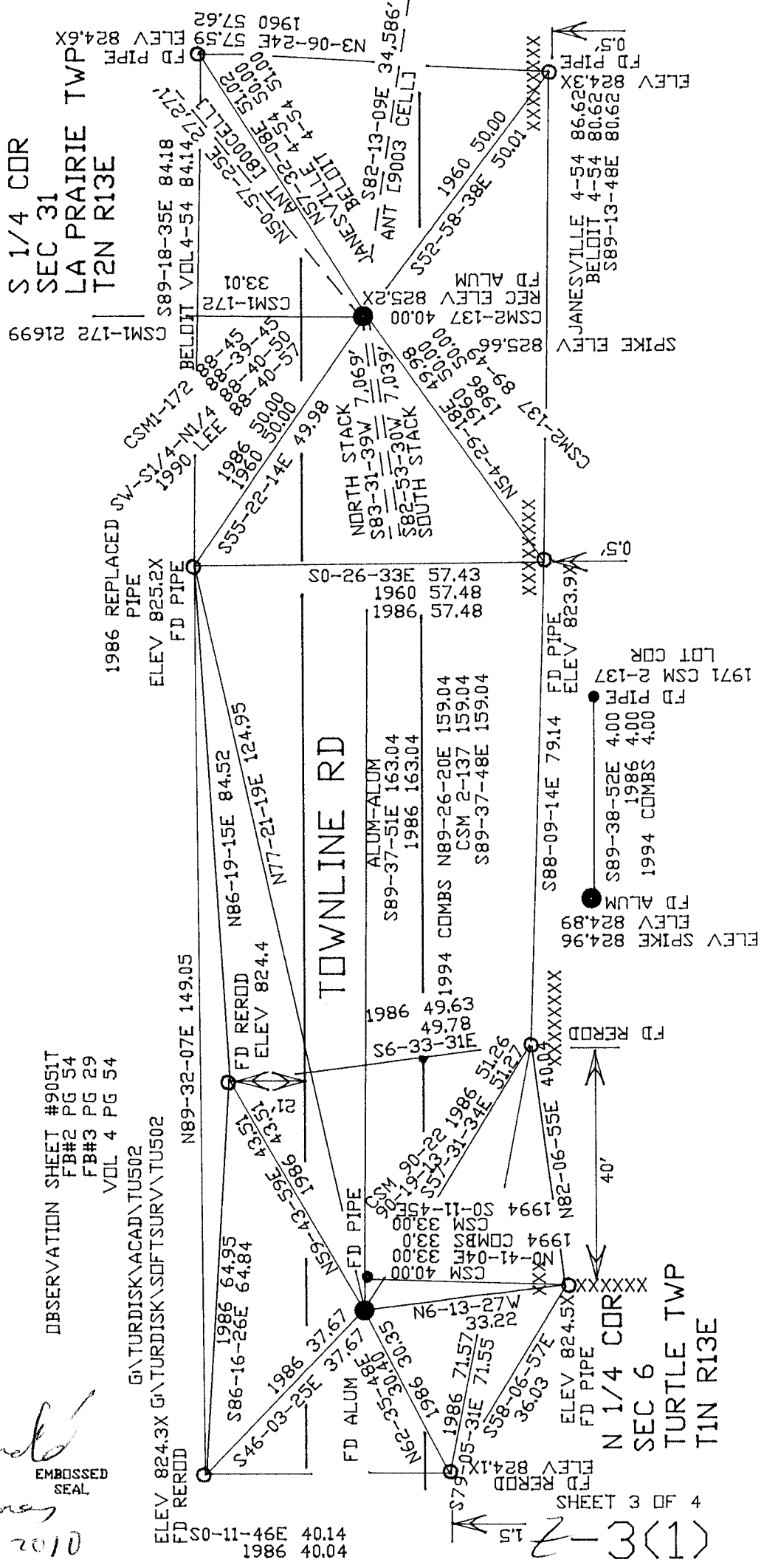
(E) Was the corner reestablished through lost corner proportionate methods? If so, show the method,  
 including the directions and distances to other public land survey corners used as evidence or used for  
 proportioning the corner location.

I, **Donald Barnes**, hereby certify that the corner location as identified by the corner code index  
 was determined by me under my direction and control and that this U.S. Public Land Survey  
 Monument Record is correct and complete to the best of my knowledge and belief.

*Donald Barnes*  
 Donald Barnes  
 Emboss 07-23/2010

SHEET 2 OF 4

CORNER CODE **Z-3(1)**  
 A.E. 7.08 REQUIREMENT



S 1/4 COR  
SEC 31  
LA PRAIRIE TWP  
T2N R13E

TOWNLINE RD

N 1/4 COR  
SEC 6  
TURTLE TWP  
T1N R13E

OBSERVATION SHEET #9051T  
FB#2 PG 54  
FB#3 PG 29  
VOL 4 PG 54

GI\TURDISK\ACAD\TU502  
GI\TURDISK\SOFTSURV\TU502

*[Signature]*  
**EMBOSSED  
SEAL**  
7-23-2010

(1) 3

