

PLAT AND RECORD

Of a Survey on Section 10 T 1 R 14 E. of the 4 P. M. in Clinton Township

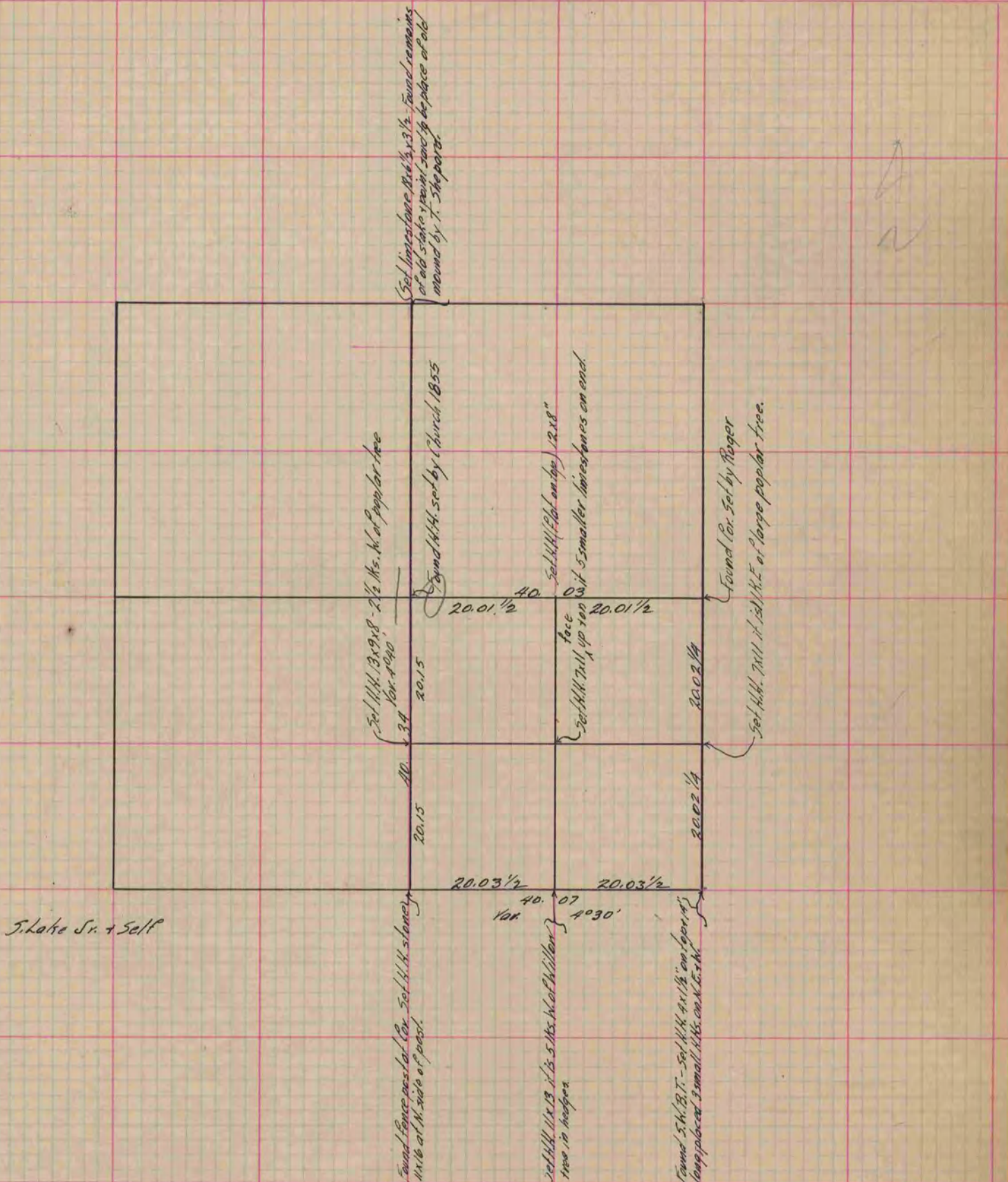
Rock County, Wisconsin, made May the 3 1880

I hereby certify that the following is a correct record of said survey as made by me.

COUNTY BUILDING
IN CITY OF BELOIT

(Signed) R. K. Lee
R. K. Lee

Dep. R. K. Lee
County Surveyor.



Copied from P. 250 Vol. 2 County Surveyor's Record.