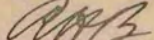
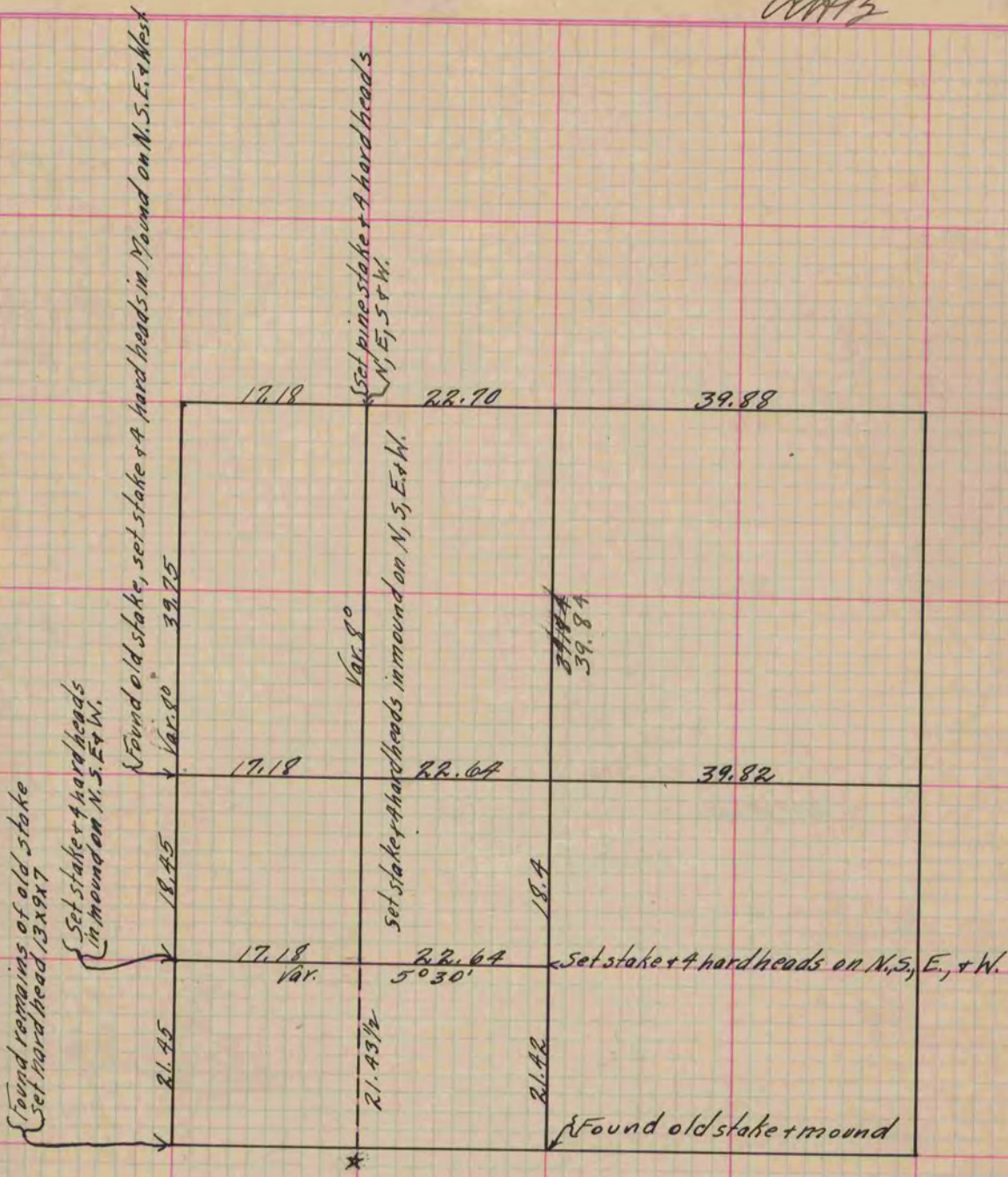


# PLAT AND RECORD

Of a Survey on Section 25 T 3 R 14 E. of the 4 P. M. in Johnstown Township  
 Rock County, Wisconsin, made September the 1863

I hereby certify that the following is a correct record of said survey as made by me.  
**COUNTY BUILDING**  
**IN CITY OF BELOIT**

(Signed) S.D. Locke.  
  
 County Surveyor.



\* Ran the dotted line Nov. 30<sup>th</sup> 1864 and set at the star (\*) a fence post in old sod fence with a hard head on North, South, East + West sides of it  
 S.D. Locke, Co. Surveyor

Copied from Upper 1/2 of Page 196 Vol. 1. County Surveyor's Record.