

PLAT AND RECORD

Of a Survey on Section 32 T 3 R 13 E. of the 4 P. M. in Harmony Township
Rock County, Wisconsin, made November the 23rd 1859

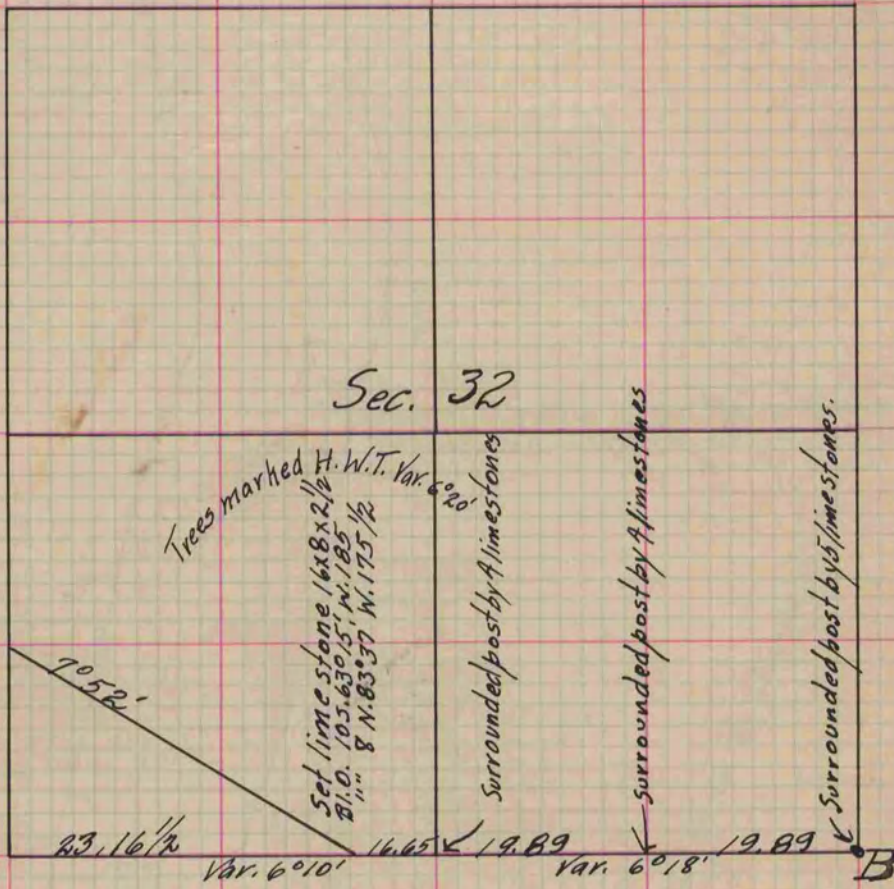
I hereby certify that the following is a correct record of said survey as made by me.

COUNTY BUILDING
IN CITY OF BELOIT

(Signed) Edward Ruger
E. Ruger

County Surveyor.

Racine and Janesville which was laid out in 1846 and which is
plat, distances as given in chains
(in pencil Harmony Road)



One, Original County Surveyors Record.