

PLAT AND RECORD

Of a Survey on Section 29 T / R 13 E. of the 4 P. M. in Turtle Township

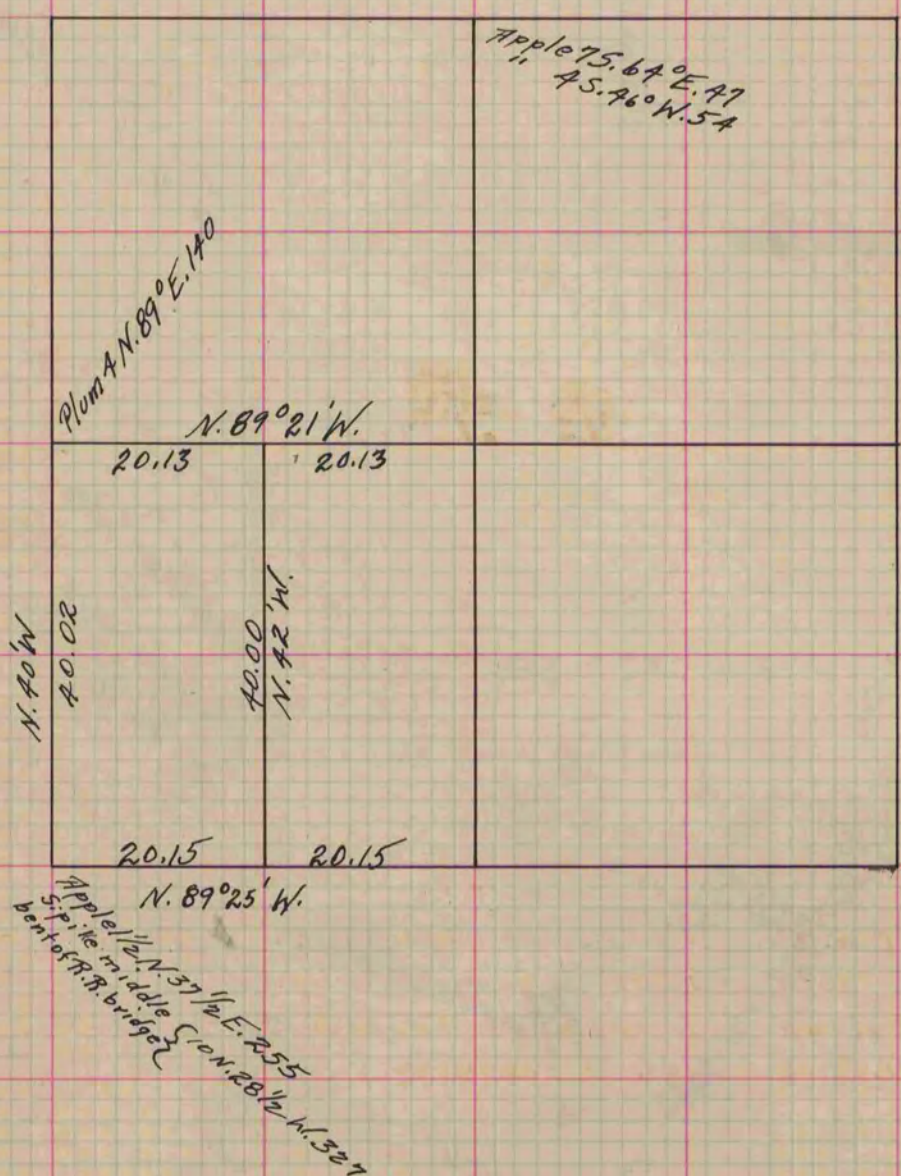
Rock County, Wisconsin, made June the 10th 1859

I hereby certify that the following is a correct record of said survey as made by me.

COUNTY BUILDING
IN CITY OF BELOIT

(Signed) E. F. Hobart
R.H.B.

Deputy County Surveyor.



Measurements in links
Variation 5°30'

Copied from Page 117 Vol. 1 Original County Surveyors Record