

PLAT AND RECORD

Of a Survey on Section 19 T 3 R 11 E. of the 4 P. M. in Center Township

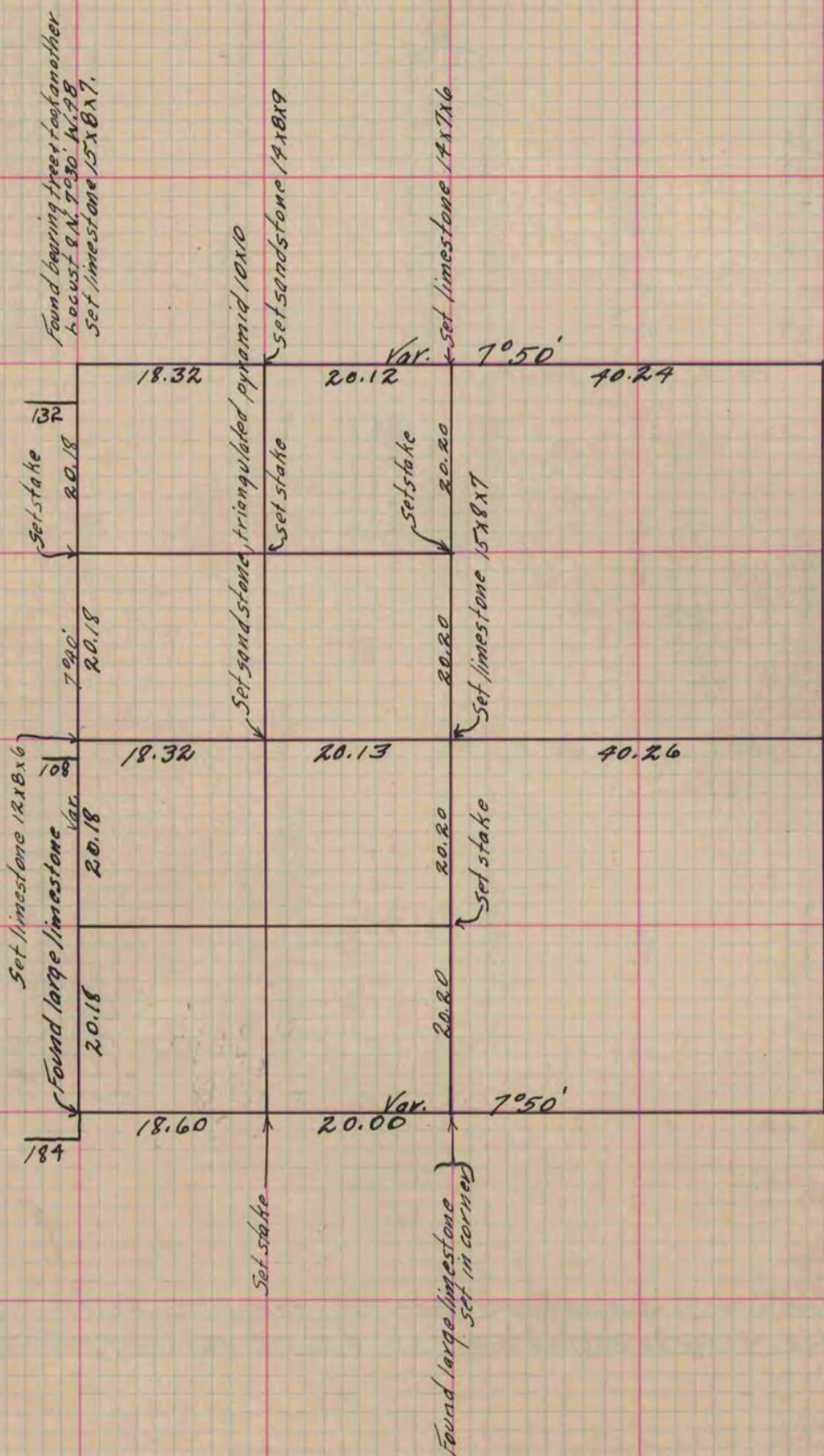
Rock County, Wisconsin, made June the 10th 1863

I hereby certify that the following is a correct record of said survey as made by me.

COUNTY BUILDING
IN CITY OF БЕЛОIT

(Signed) S. D. Locke
S. D. Locke

County Surveyor.



Copied from Page 189 Vol. 1. Original County Surveyor's Record.