

# PLAT AND RECORD

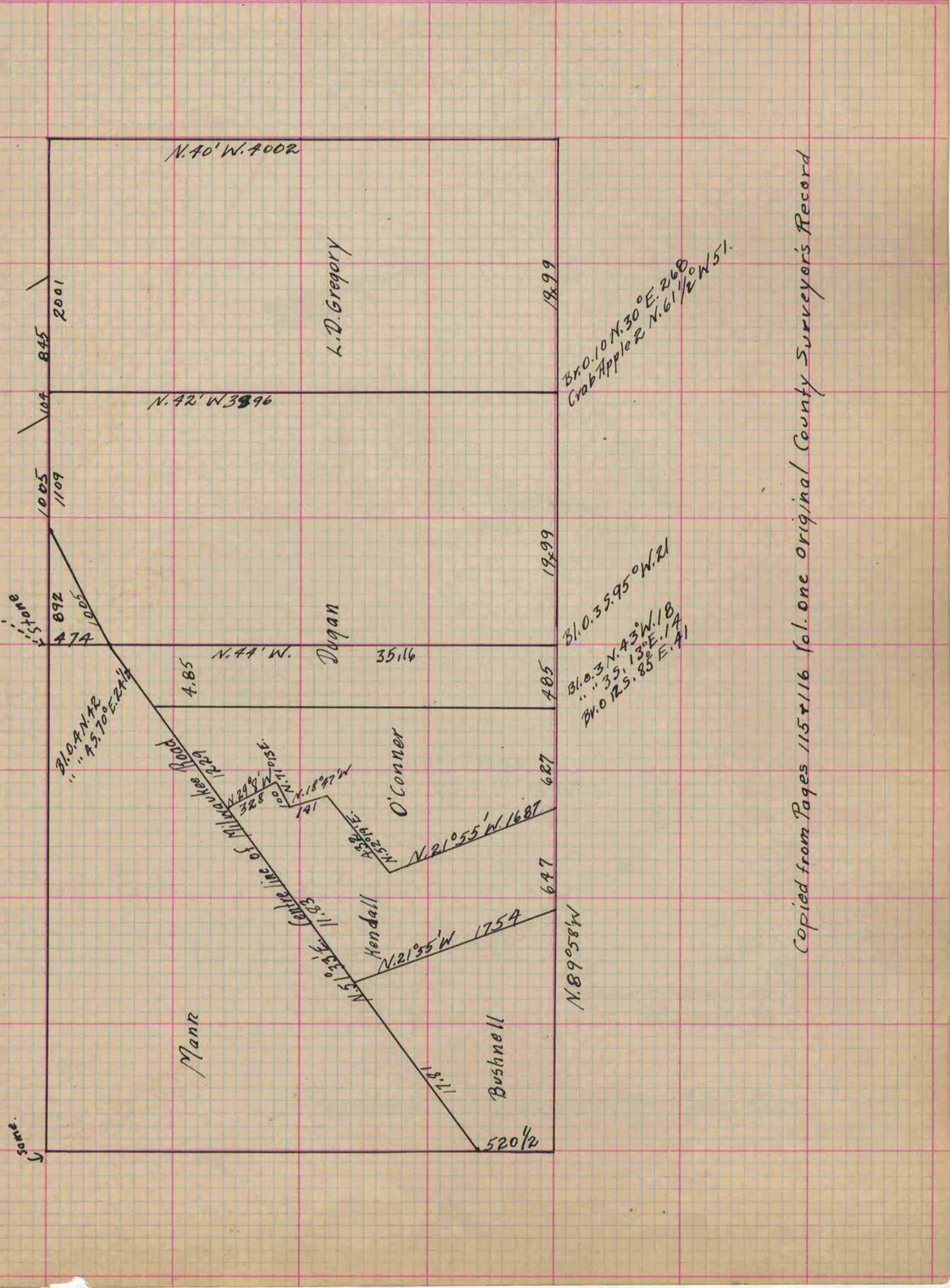
Of a Survey on Section 30 T 1 R 13 E. of the 4 P. M. in Turtle Township  
Rock County, Wisconsin, made June the 10th 1859

I hereby certify that the following is a correct record of said survey as made by me.

COUNTY BUILDING  
IN CITY OF BELOIT

(Signed) E.F. Hobart  
RHB

Deputy County Surveyor.



Copied from Pages 115 & 116 Vol. one original County Surveyor's Record