

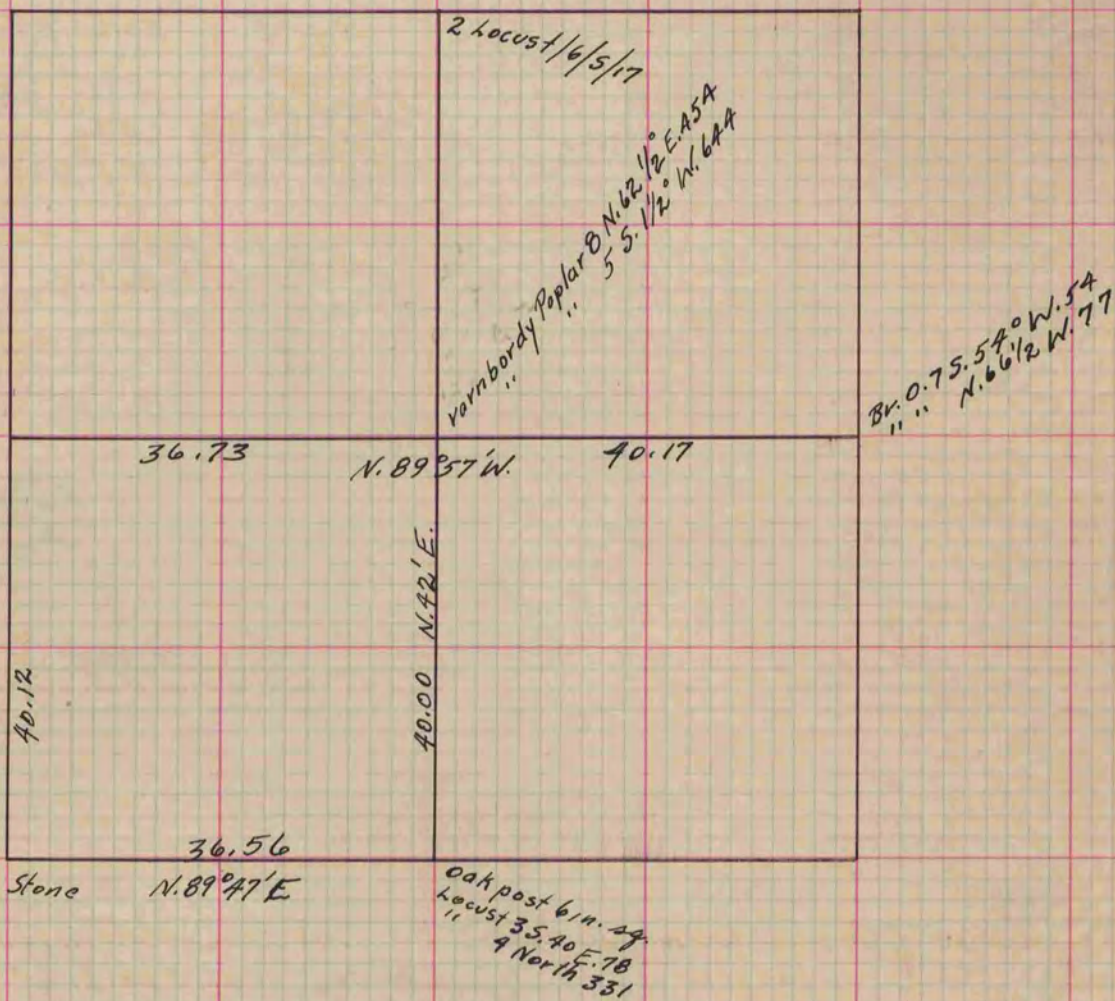
PLAT AND RECORD

Of a Survey on Section 19 T 1 R 13 E. of the 4 P. M. in Turtle Township
Rock County, Wisconsin, made May the 31st 1859

I hereby certify that the following is a correct record of said survey as made by me.

COUNTY BUILDING
IN CITY OF BELOIT

(Signed) E. F. Hobart
County Surveyor.



Courses according to the true Meridian
Var. 5° 30'

Measurements in links.

Notes of bearing trees established at the time of the Survey
are given on the Plat.

Copied from Page 114 Vol. 1 Original County Surveyors Record.