

PLAT AND RECORD

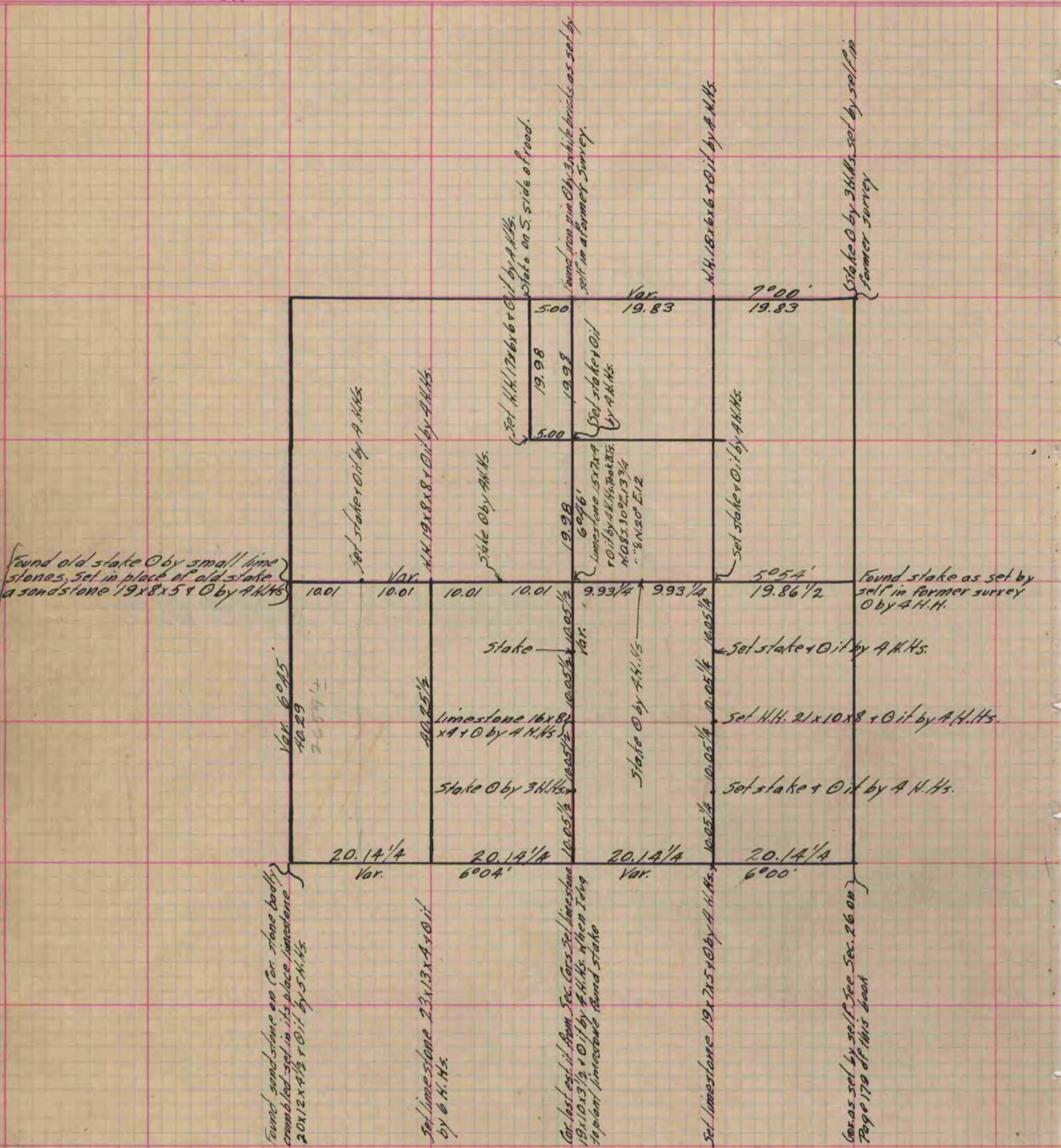
Of a Survey on Section 27 T 3 R 12 E. of the 4 P. M. in Janesville Township

Rock County, Wisconsin, made May the 10, 11 & 12 1877

I hereby certify that the following is a correct record of said survey as made by me.

COUNTY BUILDING
IN CITY OF БЕЛОIT

(Signed) Edward Roger
R.R.B. County Surveyor.



Copied From P. 180 Vol. 2 Original County Surveyor's Record.