

PLAT AND RECORD

Of a Survey on Sections 3 + 10 T 4 R 11 E. of the 4 P. M. in Porter Township

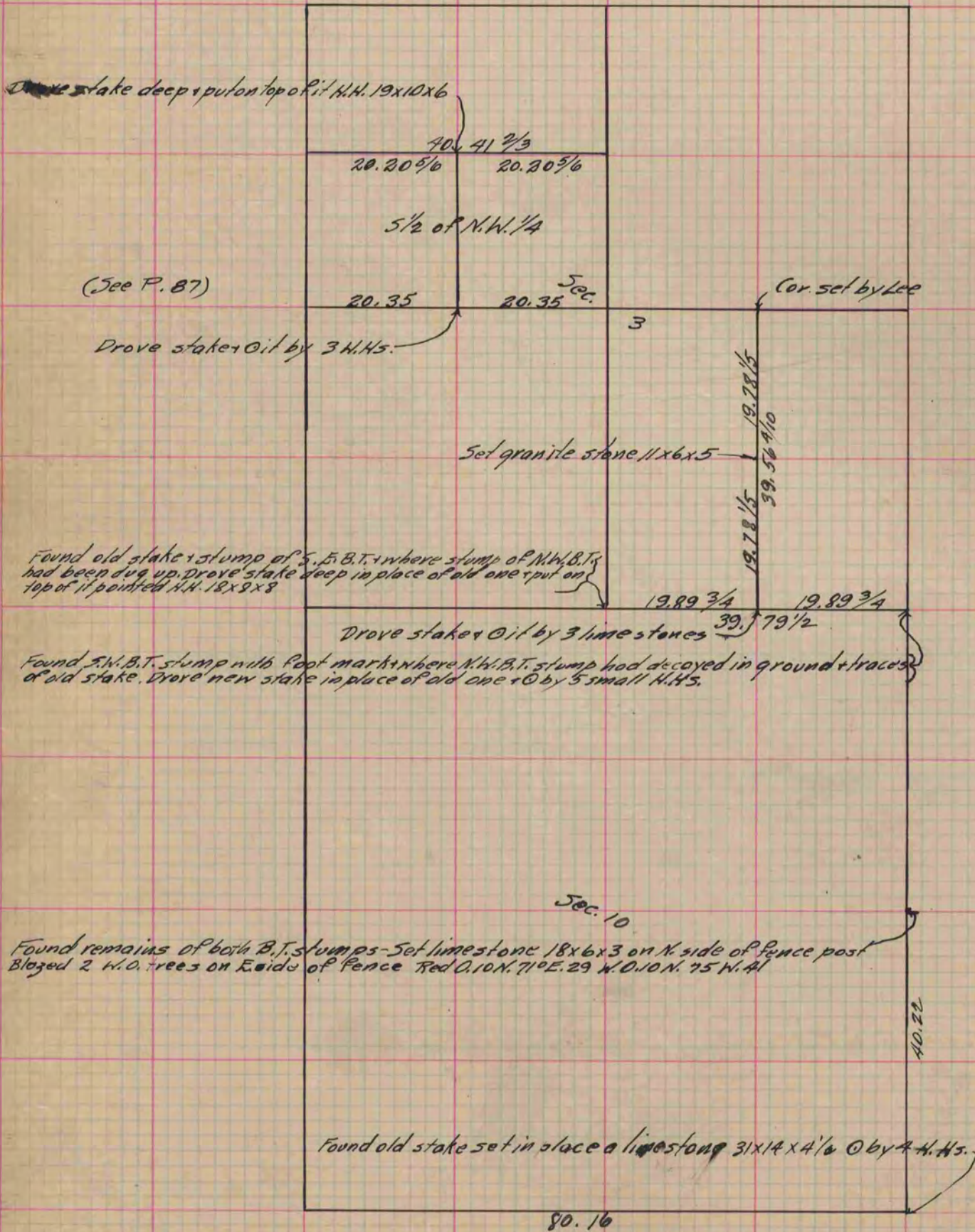
Rock County, Wisconsin, made June the 11 + 12 1885

I hereby certify that the following is a correct record of said survey as made by me.

COUNTY BUILDING
IN CITY OF BELOIT

(Signed) Edward Ruger
RNR

County Surveyor.



Copied from P. 244 Vol. 2 County Surveyors Record