

PLAT AND RECORD

277

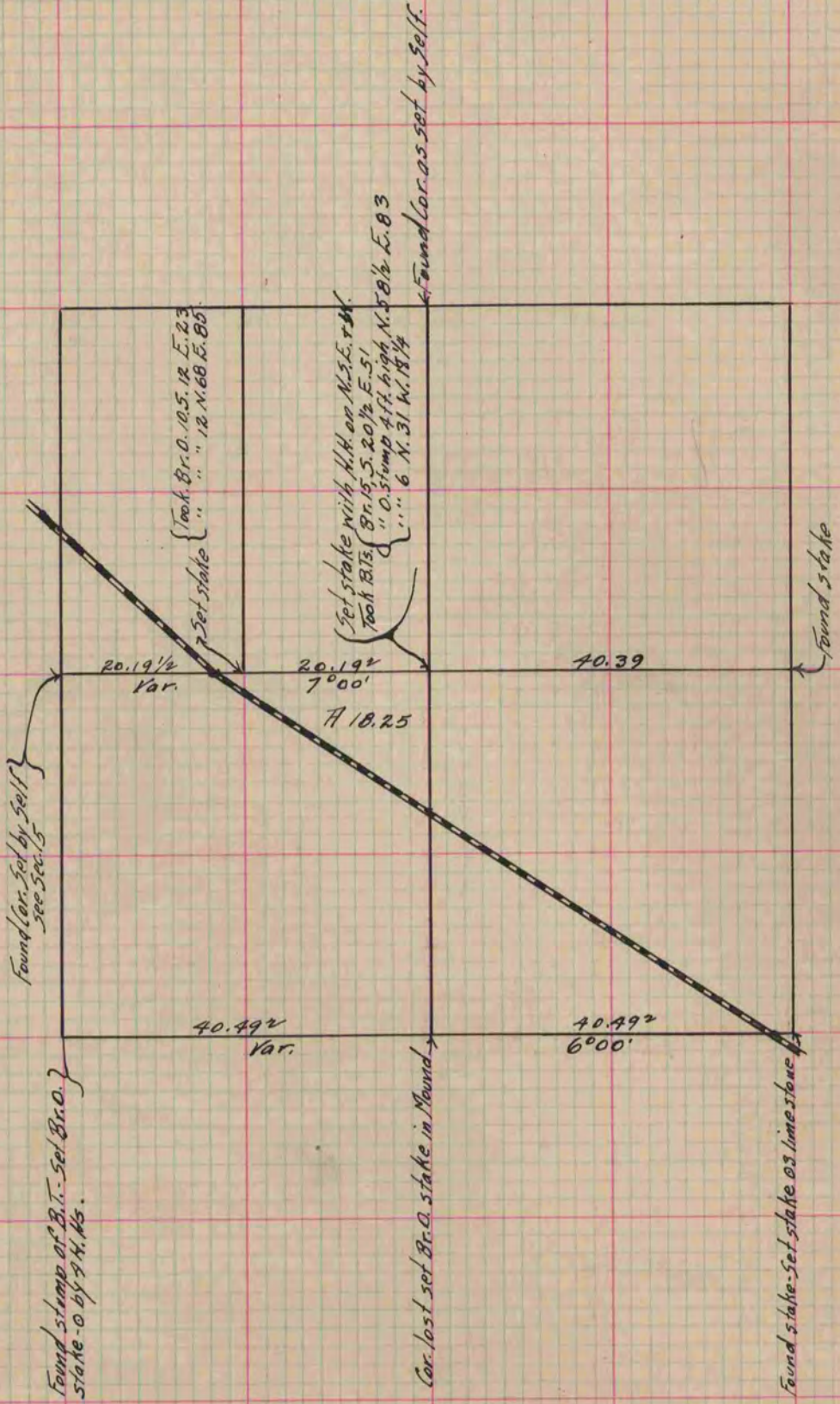
Of a Survey on Section 4 T 2 R 11 E. of the 4 P. M. in Plymouth Township
Rock County, Wisconsin, made December the 27 1966

I hereby certify that the following is a correct record of said survey as made by me.

COUNTY BUILDING
IN CITY OF BELOIT

(Signed) S. D. Locke.
S.D.L.

County Surveyor.



Copied from Page 242 Vol. 1. Original County Surveyor's Record