

PLAT AND RECORD

177

COUNTY BUILDING
IN CITY OF BELOIT

Of a Survey on Section 24 T 3 R 12 E. of the 4 P. M. in Janesville

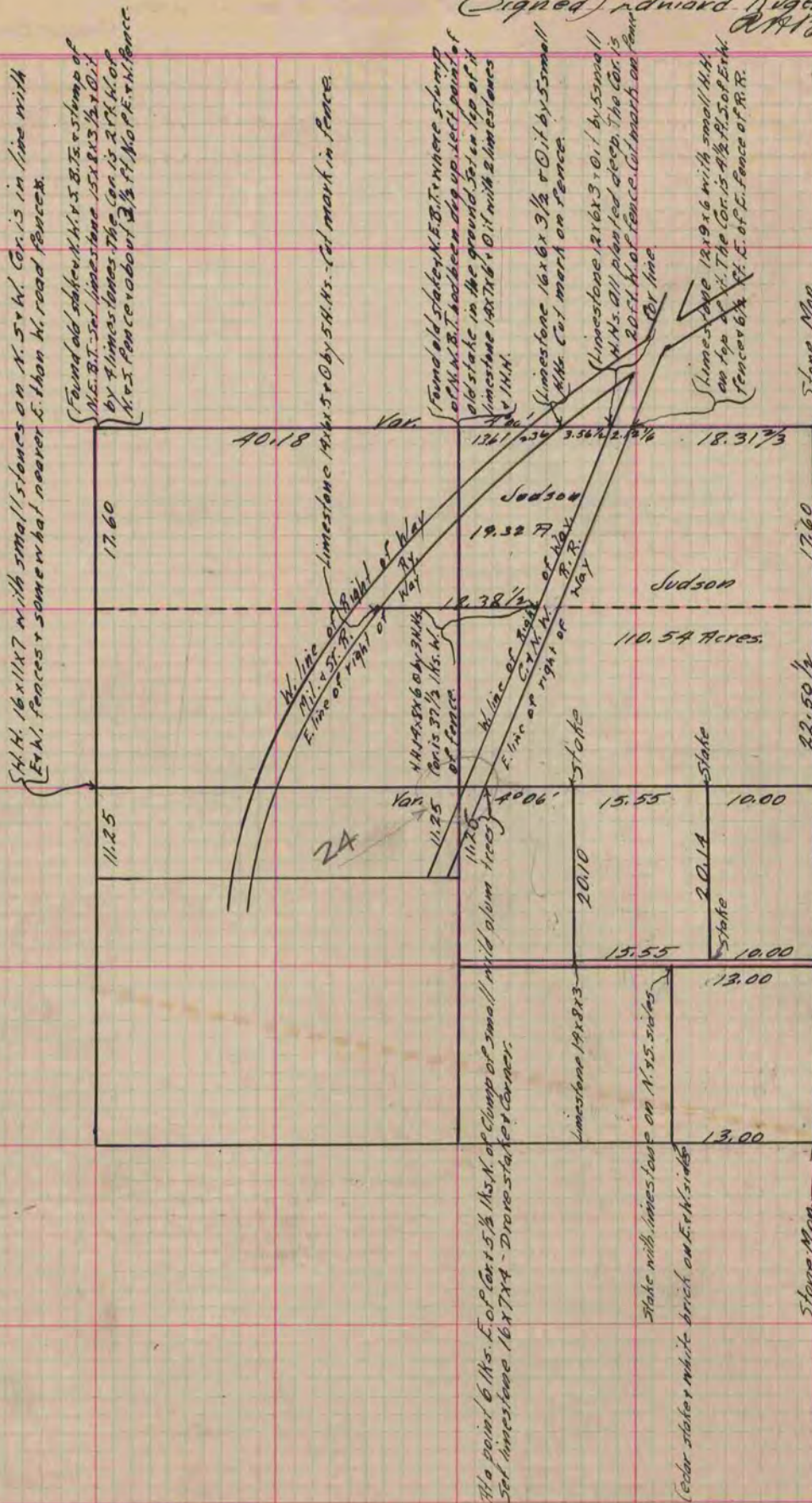
Township

Rock County, Wisconsin, made November 25 & 27 1874
July 21 - 1877

I hereby certify that the following is a correct record of said survey as made by me.

(Signed) Edward Riger

County Surveyor.



The right of way on Ct. N. W. Ry. is 80 ft. on N. & 50 ft. on E. of Centerline. In establishing boundary lines of R-O-W. The distance from the S. 1/4 Cor. of Sec. 24 Janesville to the surface of the water E. side of Rock River is 38.7 chs. Showing an encroachment of 29 chs. in side of the meander line at that point. The Meander post on the N. line of Sec. 24 Janesville is on the edge of Bluff. Found limestone of Cor. set by Self. Also found both B.T. stumps. Distance from Sec. Cor. to Meander Cor. 1.60 chs.

(Signed) E. Riger

Co. Surveyor

Copied from P. 133 Vol 2 Original County Surveyor's Record.