

PLAT AND RECORD

Of a Survey on Section 23 T 4 R 13 E. of the 4 P. M. in Milton Township

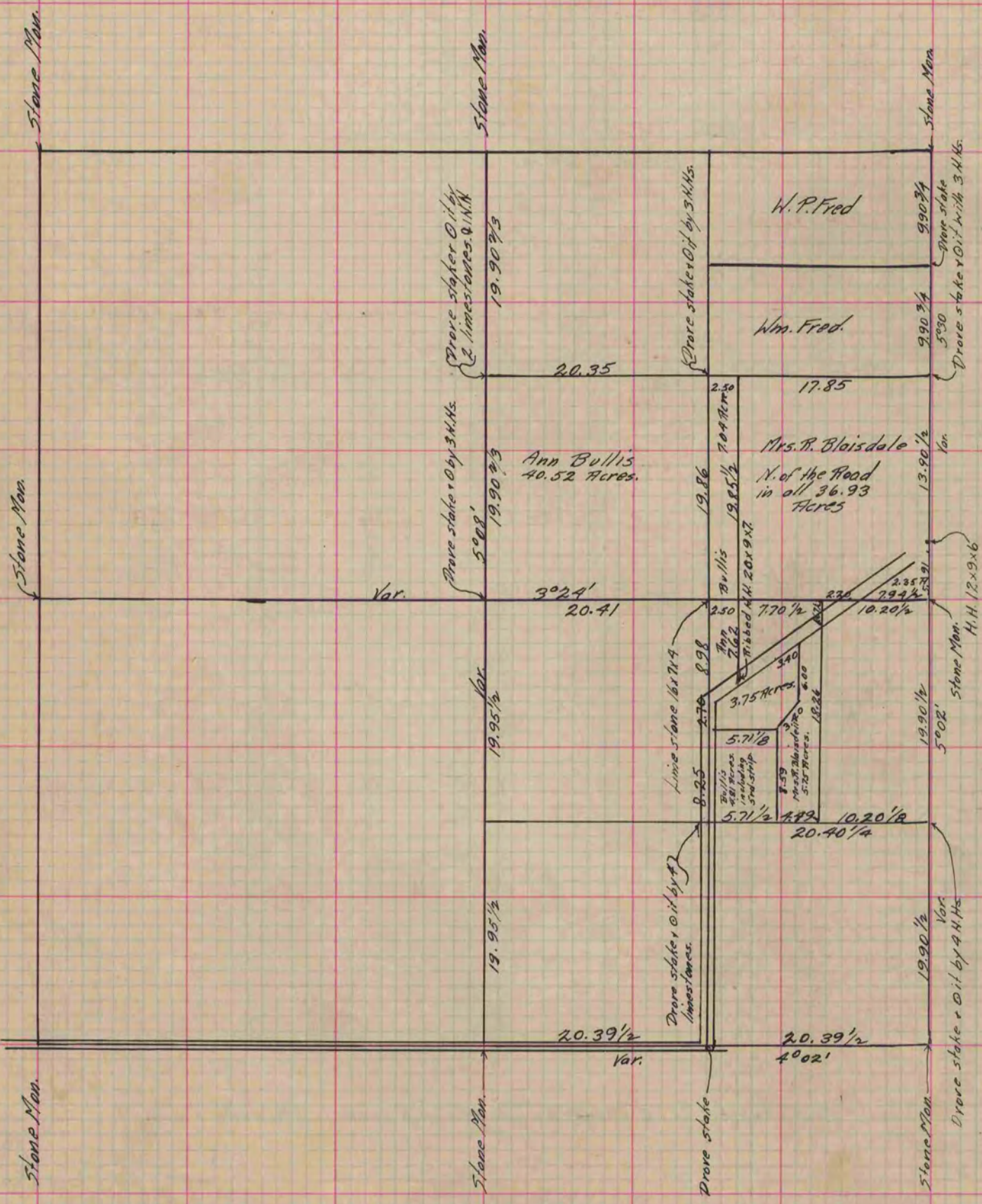
Rock County, Wisconsin, made August the 4, 5 + 6 1874

I hereby certify that the following is a correct record of said survey as made by me.

COUNTY BUILDING
IN CITY OF BELOIT

(Signed) Edward Roger
R. H. B.

County Surveyor.



Copied from P. 122 Vol. 2 Original County Surveyor's Record.