

# PLAT AND RECORD

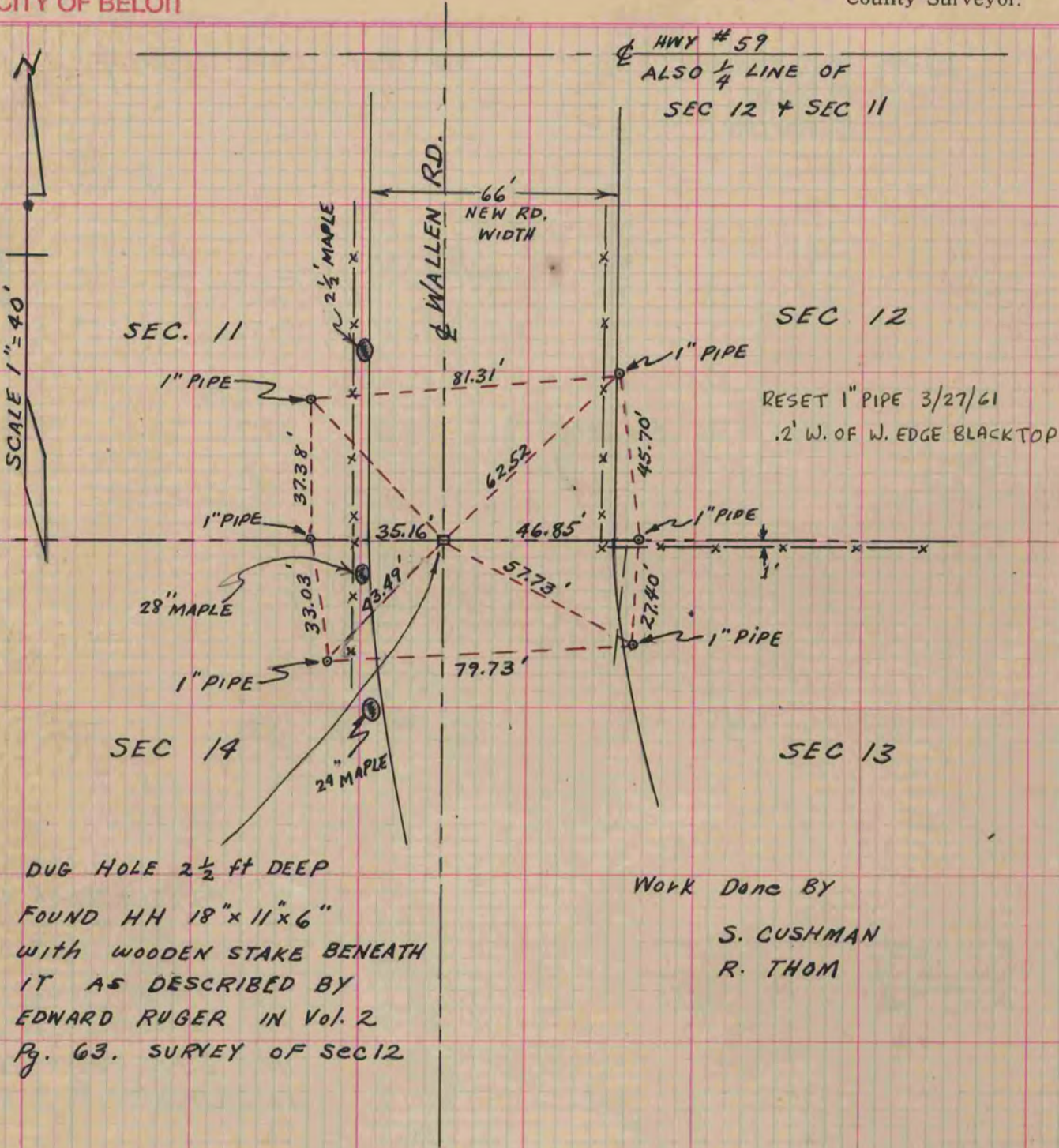
Of a Survey on Section 11, 12 T 4N R 11 E. of the 4 P. M. in Porter Township  
Rock County, Wisconsin, made 13<sup>th</sup> / 14<sup>th</sup> September the 16<sup>th</sup> 1958

I hereby certify that the following is a correct record of said survey as made by me.

COUNTY BUILDING  
IN CITY OF БЕЛОIT

County Surveyor.

SCALE 1" = 40'



Work Done By  
S. CUSHMAN  
R. THOM