

PLAT AND RECORD

Of a Survey on Section 16 T 2 R 12 E. of the 4 P. M. in Rock Township

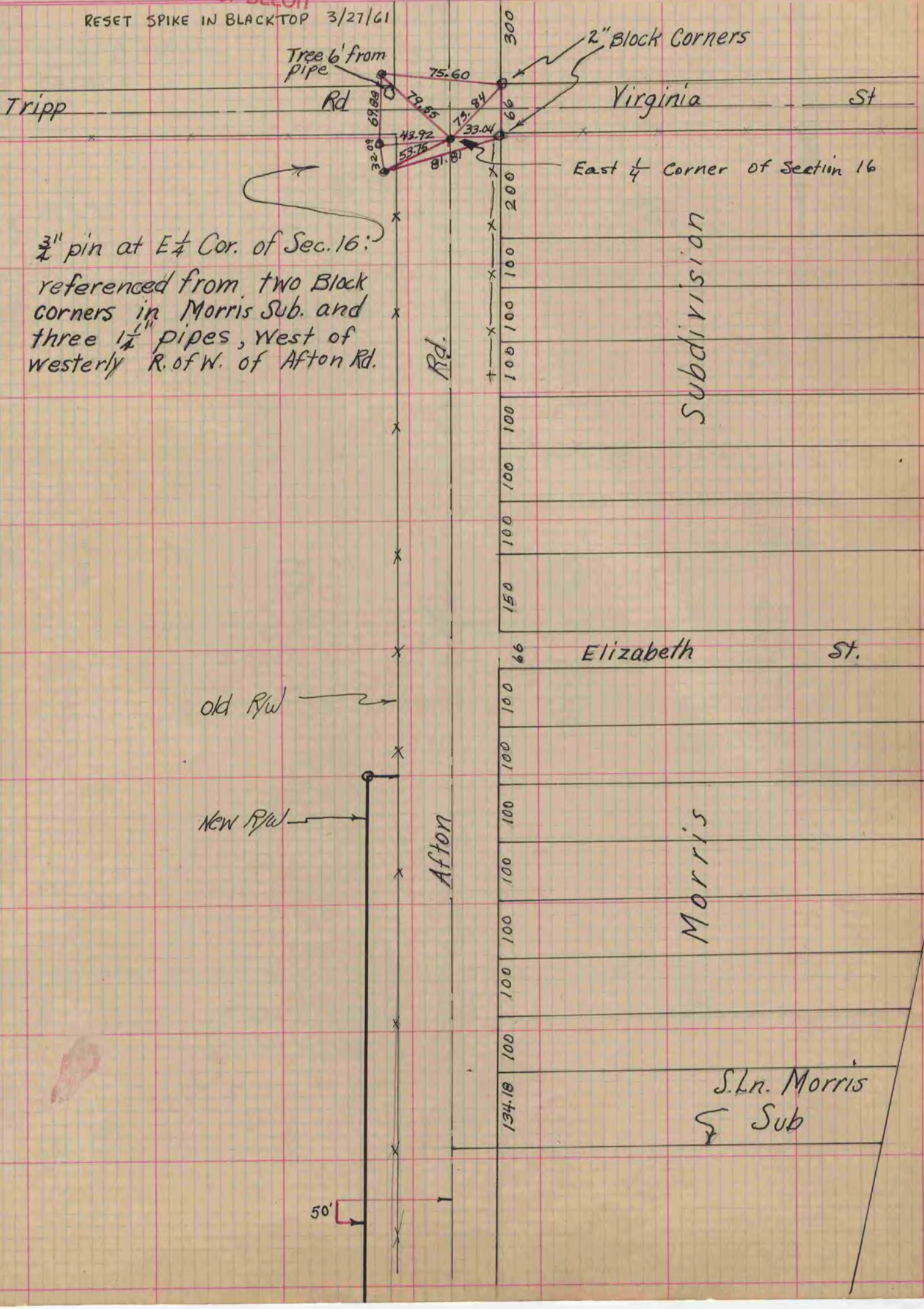
Rock County, Wisconsin, made July the 17 1958

I hereby certify that the following is a correct record of said survey as made by me.

COUNTY BUILDING
IN CITY OF BELOIT

County Surveyor.

RESET SPIKE IN BLACKTOP 3/27/61



3/4" pin at E 1/4 Cor. of Sec. 16:
referenced from two Black
corners in Morris Sub. and
three 1 1/4" pipes, West of
westerly R. of W. of Afton Rd.

old R/W

New R/W

Afton Rd.

Elizabeth St.

Virginia St

East 1/4 Corner of Section 16

Subdivision

Morris

S.L.N. Morris
Sub

50'