

# PLAT AND RECORD

Of a Survey on Section 20 T 4 R 13 E. of the 4 P. M. in Milton Township

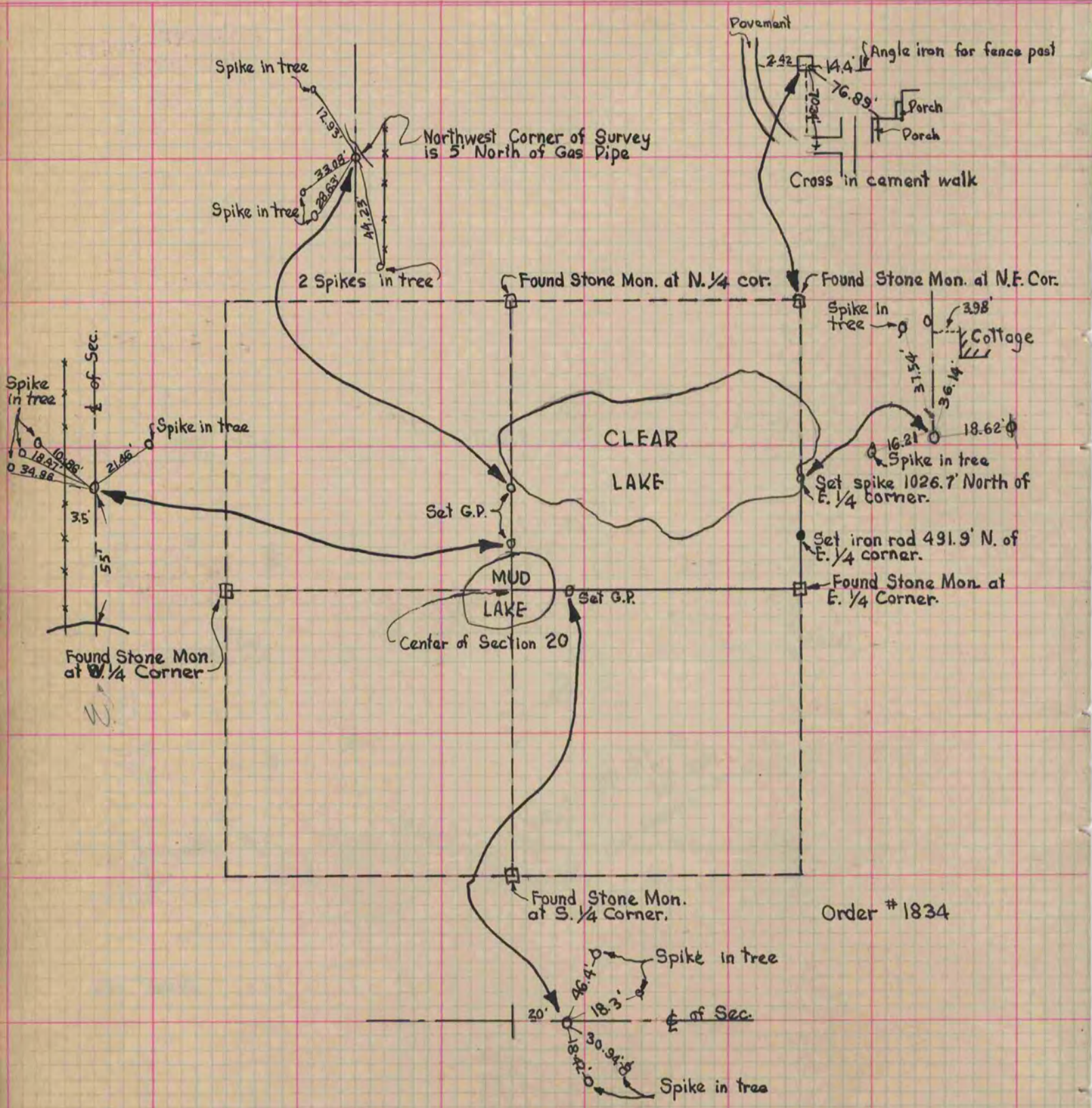
Rock County, Wisconsin, made December the 26-31 1930

I hereby certify that the following is a correct record of said survey as made by me.

COUNTY BUILDING  
IN CITY OF БЕЛОIT

R H B.

County Surveyor.



Order # 1834