

PLAT AND RECORD

Of a Survey on Section 27 T 2 R 12 E. of the 4 P. M. in Rock Township

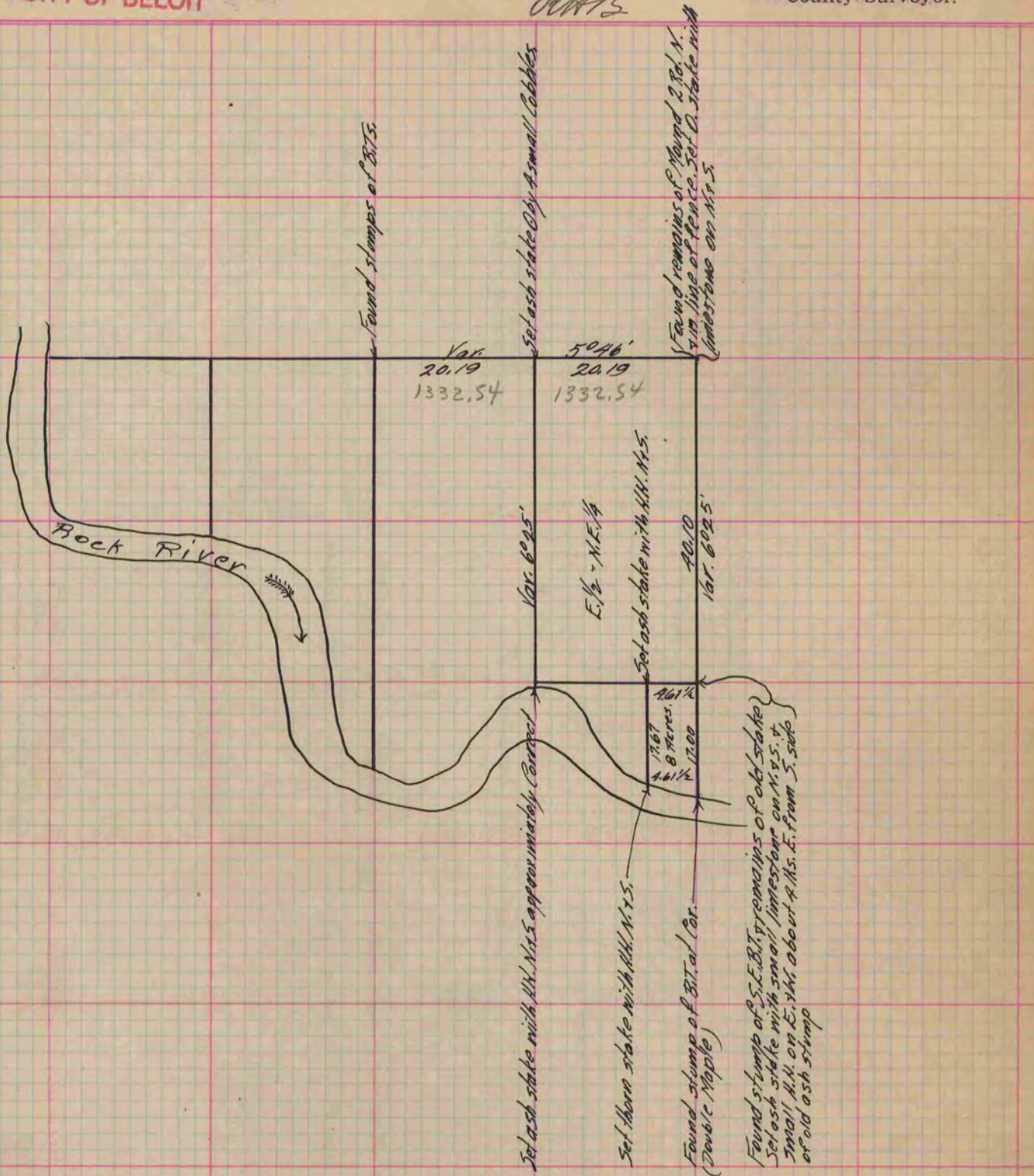
Rock County, Wisconsin, made March the 9th 1869

I hereby certify that the following is a correct record of said survey as made by me.

COUNTY BUILDING
IN CITY OF BELOIT

(Signed) R. K. Lee.
RML

County Surveyor.



Copied from Upper 1/2 of P. 276 Yall County Surveyor's Record.