

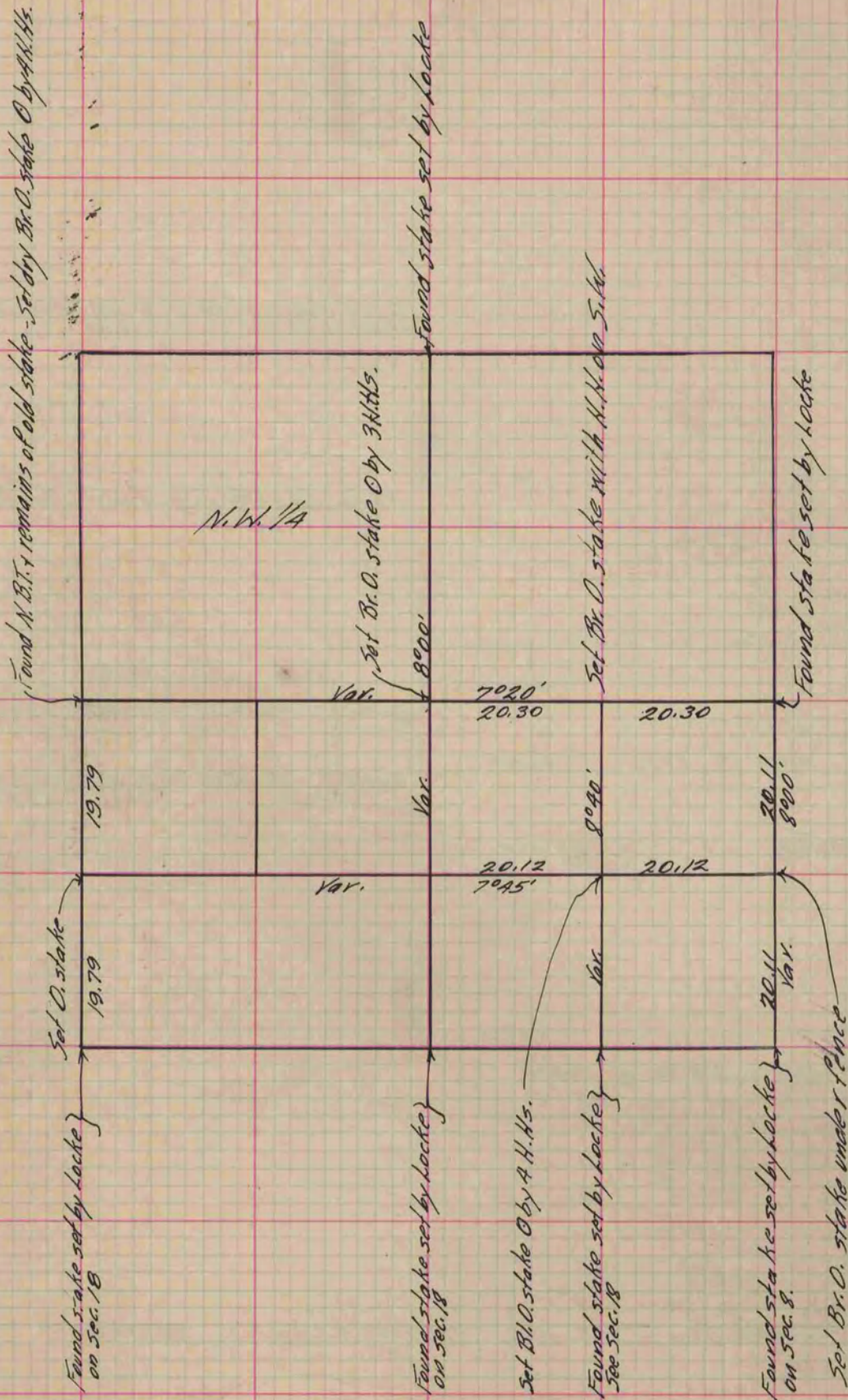
PLAT AND RECORD

Of a Survey on Section 7 T 2 R 10 E. of the 4 P. M. in Spring Valley Township
Rock County, Wisconsin, made November the 20th & 21st 1868

I hereby certify that the following is a correct record of said survey as made by me.

COUNTY BUILDING
IN CITY OF БЕЛОИТ

(Signed) R. L. Lee
R. L. Lee Dep. County Surveyor.



Copied from P. 275 Vol. 1 County Surveyor's Record.